

## Certification Body:



ABN: 81 663 250 815  
JAS-ANZ Accreditation  
No. Z4450210AK  
PO Box 273,  
Palmwoods Qld 4555  
Australia  
P: +61 7 5445 2199  
[www.cmicert.com.au](http://www.cmicert.com.au)  
[office@cmicert.com.au](mailto:office@cmicert.com.au)

## Certificate Holder:



James Hardie Australia  
Pty Ltd  
ABN: 12 084 635 558  
10 Colquhoun St,  
Rosehill NSW 2142  
Australia  
P: 13 11 03  
[www.jameshardie.com.au](http://www.jameshardie.com.au)

Certificate number: CM40389 Rev1

## THIS IS TO CERTIFY THAT

## Hardie™ Smart ZeroLot™ Wall System

### Type and/or use of product:

For use as an external wall in Class 1 and Class 10a with a timber frame that has either dual or single zero lot boundaries.

### Description of product:

The Hardie™ Smart ZeroLot™ Wall System is comprised of single 90mm timber framed walls, insulated with 60mm Hardie™ Fire insulation to external lining side of the frames within the stud bays. Walls are lined with Hardie™ ZeroLot™ panels to the external face & Hardie™ internal lining or standard plasterboard to the internal face. Refer A3.

## COMPLIES WITH THE FOLLOWING BCA PROVISIONS AND STATE OR TERRITORY VARIATION(S)

## BCA 2022

	Volume One
Performance Requirement(s):	Not Applicable
Deemed-to-Satisfy Provision(s):	Not Applicable

	Volume Two
	Not Applicable
H1D7(4)(b)	Roof and wall cladding – Sheet wall cladding
H2D6(4)	Damp and weatherproofing – Wall cladding
H3D2(d)	Non-combustible building elements – Fibre-reinforced cement sheeting – Panel Only
H3D3	Fire separation of external walls – Subject to Limitation and Condition No. 3
H7D4	Construction in bushfire prone areas – BAL-FZ Subject to Limitation and Condition No. 4
H7D4 (NSW, QLD & SA)	

State or territory variation(s): Not Applicable

## SUBJECT TO THE FOLLOWING LIMITATIONS AND CONDITIONS AND THE PRODUCT TECHNICAL DATA IN APPENDIX A AND EVALUATION STATEMENTS IN APPENDIX B

### Limitations and conditions:

- Hardie™ Smart Zerolot™ Wall System must only to be installed in accordance with the [Design Guide – Hardie™ Smart ZeroLot™ Wall System Class 1 & 10a Timber Framed Buildings January 2025](#).
- Compliance with H2D6(4) is satisfied for wall cladding that complies with H1D7(4) where Part 7.5.4 of the ABCB Housing Provisions requires fibre-cement sheet wall cladding to comply with AS/NZS 2908.2 and be fixed in accordance with Table 7.5.4a.

### Building classification/s:

Class 1 and 10a

  
Richard Donarski – CMI

  
Don Grehan – Unrestricted Building Certifier

Date of issue: 30/01/2025

Date of expiry: 01/12/2026



# Certificate of Conformity

3. Compliance with H3D3 is limited to the Hardie™ Smart Zerolot™ Wall System that achieved the FRL outlined in A3. Any deviation from the tested specimen does not form part of this certificate of conformity.
4. Compliance with H7D4 is limited to the Hardie™ Smart Zerolot™ Wall System outlined in A3. The wall systems can be located within 10m of the classified vegetation as set by AS 3959:2018 in BAL-FZ. It is the responsibility of the Building Designer to ensure compliance with BAL – FZ of other building elements are achieved in accordance with AS 3959-2018.
5. In all installations the minimum clearance between the underside of panel and the adjoining ground surface level below must comply with the specifications in Part 7.5.7 of the ABCB Housing Provisions.
6. No assessment has been undertaken on the product for Part F8 of Vol 1 or Part 10.8 of the ABCB Housing Provisions for Condensation management. A pliable building membrane complying with AS/NZS 4200.1:2017 must be installed in accordance with AS/NZS 4200.2:2017 to separate the wall cladding panels from any water sensitive materials.
7. The structural support members are designed and engineered separately as per project requirements by building designers and engineers. Stud spacing & fixings must be in accordance with Tables 7.5.3a and 7.5.4a of the ABCB Housing Provisions 2022.
8. The timber framing must be in accordance with AS 1684 as applicable.
9. Fire rating requirements of the subfloor, when required by the BCA, must be assessed by the authority having jurisdiction.
10. The footing and slab system is to comply with AS 2870:2011 or AS 3600:2018, as applicable.
11. The use of the certified product/system is subject to these Limitations and Conditions and must be read in conjunction with the Scope of Certification below.

**Scope of certification:** The CodeMark Scheme is a building product certification scheme. The rules of the Scheme are available at the ABCB website [www.abcb.gov.au](http://www.abcb.gov.au). This Certificate of Conformity is to confirm that the relevant requirements of the Building Code of Australia (BCA) as claimed against have been met. The responsibility for the product performance and its fitness for the intended use remain with the Certificate Holder. The certification is not transferrable to a manufacturer not listed on Appendix A of this certificate.

Only criteria as identified within this Certificate of Conformity can be used for CodeMark certification claims. Where other claims are made in a client's Installation Manual, Website or other documents that are outside the criteria on this Certificate of Conformity, such criteria cannot be used or claimed to meet the requirements of this CodeMark certification.

The NCC defines a Performance Solution as one that complies with the Performance Requirements by means other than a Deemed-to-Satisfy Solution. A Building Solution that relies on a CodeMark Certificate of Conformity that certifies a product against the Performance Requirements cannot be considered as Deemed-to-Satisfy Solution.

This Certificate of Conformity may only relate to a part of a Performance Solution. In these circumstances other evidence of suitability is needed to demonstrate that the relevant Performance Requirements have been met. The relevant provisions of the Governing Requirements in Part A of the NCC will also need to be satisfied.

This Certificate of Conformity is issued based on the evidence of compliance as detailed herein. Any deviation from the specifications contained in this Certificate of Conformity is outside of this document's scope and the installation of the certified product will not be covered by this Certificate of Conformity.

**Disclaimer:** The Scheme Owner, Scheme Administrator and Scheme Accreditation Body do not make any representations, warranties or guarantees, and accept no legal liability whatsoever arising from or connected to, the accuracy, reliability, currency or completeness of any material contained within this certificate; and the Scheme Owner, Scheme Administrator and Scheme Accreditation Body disclaim to the extent permitted by law, all liability (including negligence) for claims of losses, expenses, damages and costs arising as a result of the use of the product(s) referred to in this certificate.

When using the CodeMark logo in relation to or on the product/system, the Certificate Holder makes a declaration of compliance with the Scope of Certification and confirms that the product is identical to the product certified herein. In issuing this Certificate of Conformity, CMI Certification Pty Ltd (CMI) has relied on the experience and expertise of external bodies (laboratories and technical experts).

Nothing in this document should be construed as a warranty or guarantee by CMI, and the only applicable warranties will be those provided by the Certificate Holder.

## APPENDIX A – PRODUCT TECHNICAL DATA

### A1 Type and intended use of product

The Hardie™ Smart ZeroLot™ Wall System is intended for use as an external wall in Class 1 and Class 10a timber framed buildings with dual or single zero lot boundaries. The system is designed for use in timber framed buildings with a fire resistance level (FRL) requirement of 60/60/60 or less (from external side), and also suitable for use where a BAL-FZ is required.

### A2 Description of product

The Hardie™ Smart ZeroLot™ Wall System is comprised of single 90mm timber framed walls, insulated with 60mm Hardie™ Fire insulation to external lining side of the frames within the stud bays. Walls are lined with Hardie™ ZeroLot™ panels to the external face & Hardie™ internal lining or standard plasterboard to the internal face.

#### Hardie™ Smart ZeroLot™ Wall System Components:

External Cladding	Product Code	Length (mm)	Width (mm)	Thick (mm)	Mass (kg)
Hardie™ Zerolot™ Panel	404880	3000	1200	8.5	12

Weather Barrier	Product Code	Length (m)	Width (mm)	Coverage (mm²)	Mass (kg)
Hardie™ Wrap Weather Barrier	305664	30	2750	38	9

Mineral wool insulation	Product Code	Length (m)	Width (mm)	Thick (mm)	Coverage (mm²)
60mm Hardie™ Fire Insulation	305903	1160	560	60	5.1
	305902	1160	420	60	3.8
	305909	1320	420	60	4.3

Hardie™ Internal Lining	Length (m)	Width (mm)	Thick (mm)	Density (kg/m²)
Villaboard™ 6mm Lining	2400	900	6	8.3
	1800, 2400, 2700, 3000, 3600, 4200	1200	6	8.3
	2400, 3000, 3600, 4200	1350	6	8.3
Versilux™ Lining	1200	2700, 2400, 3000	9	12.4
	1200	2400, 3000, 3600	6	8.3
Hardie™ Groove Lining	1200	2700, 3000	7.5	10.44
Alternatively, 10mm standard plasterboard can be used in dry areas only as internal lining. The product must comply to the requirements of AS/NZS 2588 - Gypsum Plasterboard.				

Accessories	Product Code	Length (mm)
Hardie™ 9mm Aluminium Horizontal Step Flashing	305886	3600
Hardie™ Aluminium 9mm External Square Corner	306100	3000
Hardie™ 50mm Wide Foam Back Sealing Tape	304560	25,000

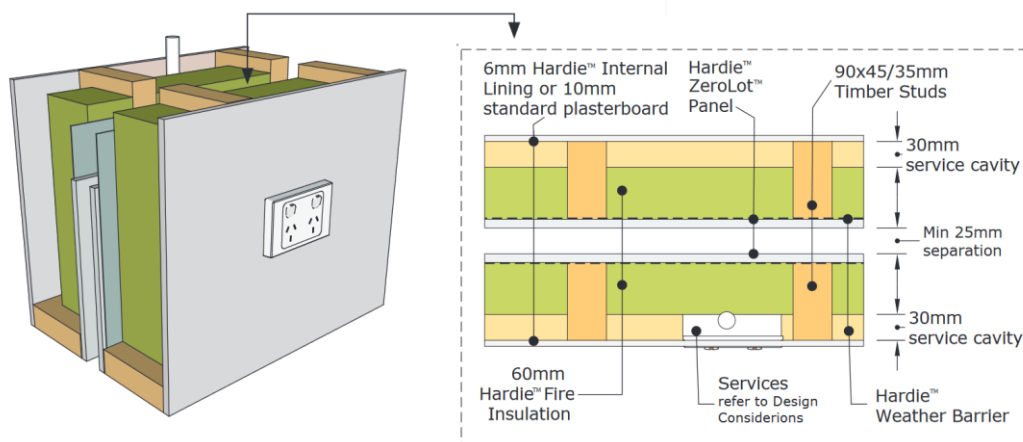
# Certificate of Conformity

## Other Components

Fasteners	Fibre Cement Nail for fixing Hardie™ ZeroLot™ Panel and Villaboard™ lining. 2.8 x 30mm min. Min. Class 3 corrosion resistant fibre cement nail. 2.5 x 50mm gun nails are also suitable.
Fire and Acoustic-Rated Sealant	Bostik FireBan One or an equivalent sealant it must be tested in accordance with AS 1530.4 and achieve a minimum 60 minute fire rating.

## A3 Product specification

<b>Material</b>	The basic composition is Portland cement, ground sand, cellulose fibre and water. James Hardie building products are manufactured to Australian/New Zealand Standard AS/NZS 2908.2:2000 'Cellulose-cement products-Flat sheet'. Hardie™ ZeroLot™ panels are classified Type A, Category 3 in accordance with AS/NZS 2908.2:2000.
<b>Damp and weatherproofing</b>	Compliance with H2D6(4) is satisfied for wall cladding that complies with H1D7(4) where Part 7.5.4 of the ABCB Housing provisions requires fibre-cement sheet wall cladding to comply with AS/NZS 2908.2 and be fixed in accordance with Table 7.5.4a.
<b>Non-combustible</b>	Hardie™ ZeroLot™ panel and Villaboard™ 6mm Lining are suitable where non-combustible materials are required in accordance with as it compliance with H3D2(1)(d) of the Building Code of Australia as fibre-reinforced cement sheeting that complies with AS/NZS 2908.2:2000. Non-combustible does not extend to include the joiners.
<b>Fire Resistance (FRLs)</b>	Assessment of the Hardie™ Smart ZeroLot™ Wall System has determined that the system achieves <b>FRLs of 60/60/60 and –/60/60</b> . Exposure from the boundary line in either direction (from the external cladding side) as shown in the figure below. Installation must be in accordance with the <a href="#">Design Guide – Hardie™ Smart ZeroLot™ Wall System Class 1 &amp; 10a Timber Framed Buildings January 2025</a> .



Source: CSIRO Report No. FCO-3222 Revision L dated 25/05/2021.

# Certificate of Conformity

## Bushfire

An assessment of the Hardie™ Smart Zerolot™ Wall System has been completed by Ignis Labs Pty Ltd. AS 3959:2018 allows external wall cladding for BAL FZ provided the system is non-combustible or complies with AS 1530.8.2:2007 or achieves an FRL of at least (30/30/30 from the outside and set back at least 10m between the building and the edge of the classified vegetation. It is concluded that the subject wall systems have the capacity to conform with AS 1530.8.2 and as such, the subject wall systems can be located within 10m of the classified vegetation as set by AS 3959:2018 in BAL-FZ.

*Source: Ignis Labs Pty Ltd Report No. IGNL-6249-16-01 I02R05 BBV3.0 JH Bushfire 05102023 dated 05/10/2023.*

## A4 Manufacturer and manufacturing plant(s)

Hardie™ Smart Zerolot™ Wall System is manufactured in Australia by James Hardie Australia Pty Ltd. Contact Certificate Holder for details.

## A5 Installation requirements

Hardie™ Smart Zerolot™ Wall System must only to be installed in accordance with the [Design Guide – Hardie™ Smart ZeroLot™ Wall System Class 1 & 10a Timber Framed Buildings January 2025](#).

## A6 Other relevant technical data

No other relevant technical data.

## APPENDIX B – EVALUATION STATEMENTS

### B1 Evaluation methods

1. Construction in bushfire prone areas Provisions A5G3(1)(e). A certificate or report from a professional engineer or other appropriately qualified person.
2. Fire Safety Provisions A5G3(1)(c)&(d). A current certificate issued by a certification body stating the properties fulfil specific requirements of the BCA and a report issued by an Accredited Testing Laboratory.
3. Structural Resistance Provisions A5G3(1)(c). A current certificate issued by a certification body stating the properties fulfil specific requirements of the BCA.
4. Weatherproofing Provisions A5G3(1)(c). A current certificate issued by a certification body stating the properties fulfil specific requirements of the BCA.

### B2 Reports

1. CSIRO; NATA Accreditation No. 165; Reference No. FCO-3222 Revision L; The fire resistance performance of various load-bearing timber framed walls lined with various James Hardie fibre cement products; Dated 25/05/2021. Report provides supporting evidence of FRLs in compliance with H3D3.
2. Ignis Labs Pty Ltd Report No. IGNL-6249-16-01 I02R05 BBV3.0 JH Bushfire 05102023; Bushfire Product Evaluation – External Cladding Systems; Dated 05/10/2023. Report confirms the BAL of the Hardie™ Smart Wall Systems that achieve an FRL 60/60/60 that complies with H7D4.
3. SAI Global; StandardsMark Licence Certificate No. SMK02107/1; Manufactured to the requirements of AS/NZS 2908.2:2000 – Cellulose-cement products – Flat sheet; Dated 05/06/2024. This certificate provides evidence in compliance with H1D7(4)(b), H2D6(4) & H3D2(d).
4. SAI Global; StandardsMark Licence Certificate No. SMK02107/2; Manufactured to the requirements of AS/NZS 2908.2:2000 – Cellulose-cement products – Flat sheet; Dated 05/06/2024. This certificate provides evidence in compliance with H1D7(4)(b), H2D6(4) & H3D2(d).

The Certificate Holder has chosen not to make the above evidence of compliance publicly available, due to the documents being considered commercial in confidence.