



Application Guide

Joints and Junctions

Hardie™ Architectural Collection

EXTERIORS

Australia June 2023

Make sure your information is up to date.

When specifying or installing Hardie™ products, ensure you have the current installation guide. If in doubt, or you need more information, visit www.jameshardie.com.au or Ask James Hardie™ on 13 11 03.



CONTENTS

INTRODUCTION	3
YOUR MODERN BUILD SOLUTION	4
PRODUCT SUITE	6
HOW TO USE THIS GUIDE	8
PANEL TO WEATHERBOARD	10
1 Direct to Frame	14
2 Direct to Frame (side by side)	15
3 Direct to Cavity	16
4 Direct to Cavity (side by side)	17
PANEL TO BOARD	18
1 Direct to Frame	22
2 Direct to Cavity	23
3 Direct to Cavity	24
4 Direct to Cavity	25
5 Direct to Frame	26
6 Direct to Frame	27
PANEL TO PANEL	28
1 Direct to Frame	32
2 Direct to Frame (side by side)	33
3 Direct to Cavity	34
4 Direct to Cavity (side by side)	35
WHERE TO NEXT?	37

Introduction

The Hardie™ Architectural Collection offers a modern, simple integrated solution of selected Hardie™ fibre cement products and Hardie™ accessories to deliver fresh looks with the trusted protection and lasting beauty of Hardie™ fibre cement technology.

This Application Guide gives Builders and Design professionals the confidence to bring cladding profiles from the Hardie™ Architectural Collection together at corners and junctions, with approved solutions that uphold the performance and design of the building. For directions on how to install each individual product, refer to the product Installation Guides in the [James Hardie Technical Library](#).

It's Possible™ to make modern like never before, from the ground up.

For information relating to the installation, accessories, tools and safe work practices of any Hardie™ product, refer to the current installation guide and all the relevant technical literature at www.jameshardie.com.au.

The specifier or other responsible party for the project must ensure the information and details in this guide are appropriate for the intended application. Specific design and detailing must be undertaken for areas which fall outside the scope of this documentation.

Make sure your information is up to date.

When specifying or installing Hardie™ products, ensure you have the current manual. Additional installation information, warranties and warnings are available at www.jameshardie.com.au or

Ask James Hardie on 13 11 03.

Your modern build solution

Hardie™ Brushed
Concrete Cladding and
Linea™ Weatherboard
Wickham, NSW



Hardie™ Architectural Collection is transforming the way Australia builds modern homes.

The Hardie™ Architectural Collection is designed to solve shortage of labour and materials, facilitate flexible design and result in a modern façade that homeowners want. Created to complement each other, each of the distinctive cladding textures and profiles in this collection can be teamed with any other for a cohesive, ground-up build.

Once you recognise the benefits of building a whole home with cladding, this guide will help you install and connect all cladding products with confidence, meeting warranty requirements and delivering the modern homes your clients seek.

**Axon™ Cladding and
Stria™ Cladding**
Suburb, TBC



**Stria™ Cladding and
Hardie™ Fine
Texture Cladding**
Kings Meadows, TAS



Design Versatility: A curated collection of cladding with distinctive textures and profiles that can be painted any colour and combined for personalised looks.

Reduced Complexity: Single Trade Installation – all Hardie™ Architectural Collection products can be installed by a carpenter and painted on the same day (once any additional sealants have cured).

Durability: Made from Hardie™ fibre cement, Hardie™ Architectural Collection products are durable, resistant to damage from moisture and termites, and deemed non-combustible.

Comprehensive support: A suite of resources gives builders, architects and designers the uncomplicated framework required to deliver full lightweight homes efficiently and confidently whilst meeting the requirements of the product warranty.

Product Su



The Hardie™ Architectural Collection features a range of distinctive new exterior cladding textures and profiles, including Hardie™ Brushed Concrete Cladding, Hardie™ Oblique Cladding and more. Created with complementarity in mind, each product takes design versatility to a new level.

Made from Hardie™ fibre cement, every product in the curated collection delivers trusted protection and long-lasting beauty.

ite



NEW Hardie™ Brushed Concrete Cladding

Fresh, flowing lines for a sophisticated tactile finish.



Hardie™ Fine Texture Cladding

Achieve a modern, minimalist aesthetic with a smooth, natural sand texture and a fine matte finish.



NEW Hardie™ Oblique™ Cladding

Square and angled edges evoke a bold, contemporary aesthetic.



Axon™ Cladding

Bring beauty, drama and fine detail to your walls with clean vertical lines.



Stria™ Cladding

Bold lines suit modern designs – add versatility with varying widths and orientations.



Linea™ Weatherboard

A deep-shadow weatherboard offers clean horizontal lines for contemporary looks.



Matrix™ Cladding

Bring a bold, industrial aesthetic with a panelised, geometric look.

How to use this guide



**Matrix™ Cladding
and Stria™
Cladding**
Williamstown, VIC

From product selection to installation, Hardie™ Architectural Collection is your uncomplicated, integrated cladding solution for modern builds. Follow our step-by-step approach for long-lasting modern homes your clients will love.

Step 1:

Explore popular modern looks and the cladding required to achieve them through our suite of inspirational tools:

- a. [Hardie™ Architectural Collection](#)
- b. [Instagram](#), [Facebook](#), [Pinterest](#) @jameshardieau
- c. [Hardie™ Home Guide](#)
- c. [Purposeful Modern Design](#)

Step 2:

Once you have selected your look and cladding, identify the appropriate cladding combination, based on the classification below. For example, a build with Hardie™ Brushed Concrete Cladding on the ground floor and Linea™ Weatherboard on the first floor would be a Panel to Weatherboard combination.

Step 3:

Turn to the appropriate section for detailed directions on installing multiple cladding products using Hardie™ accessories. Choose from:

- [Panel to Weatherboard](#) (Page 10)
- [Panel to Board](#) (Page 18)
- [Panel to Panel](#) (Page 28)



Panels

From embedded texture finishes to vertical joint detailing, these 1200mm-wide panels are quick to install and bring subtle textures or profiles to façades.



**NEW Hardie™
Brushed
Concrete Cladding**



**Hardie™ Fine
Texture Cladding**



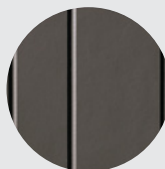
**Axon™
Cladding**

Boards

At 14mm thick and with varying widths, Hardie™ fibre cement boards are individually installed to create feature grooves. Orient vertically or horizontally and use Hardie™ accessories to combine with any panel cladding.



**Stria™
Cladding**



**NEW
Hardie™ Oblique™
Cladding**



**Matrix™
Cladding**

Weatherboard

Deep-shadow 16mm-thick weatherboards enable clean butt joins. Combine with panels across multiple levels of a home, or to highlight architectural features.



**Linea™
Weatherboard**

Panel to Weatherboard

The deep-shadow lines of Linea™ Weatherboard sing against the embedded texture or subtle lines of panel cladding, creating fresh modern looks, from Modern Coastal to Scandi Barn.



**Hardie™ Brushed
Concrete Cladding and
Linea™ Weatherboard**
Wickham, NSW



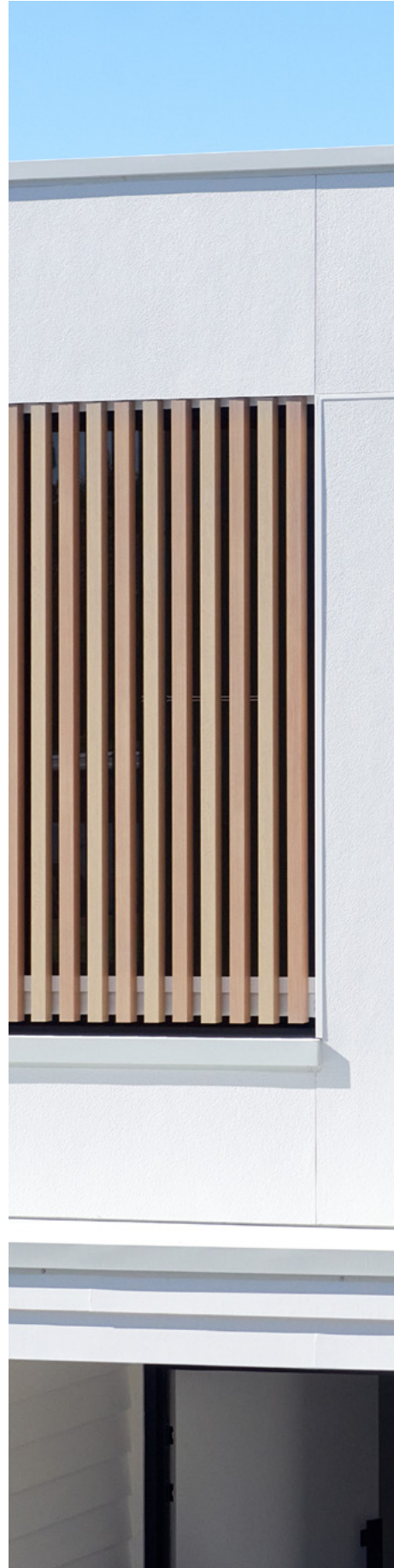


**Linea™ Weatherboard
and Axon™ Cladding**
Petersham, NSW



**Linea™ Weatherboard
and Axon™ Cladding**
Tarawa, QLD





**Linea™ Weatherboard
and Hardie™ Fine
Texture Cladding**
Miranda, NSW



Turn the page for comprehensive guidance on direct to frame or direct to cavity installation, using Hardie™ accessories.

1 Direct to Frame

PANEL

WEATHERBOARD

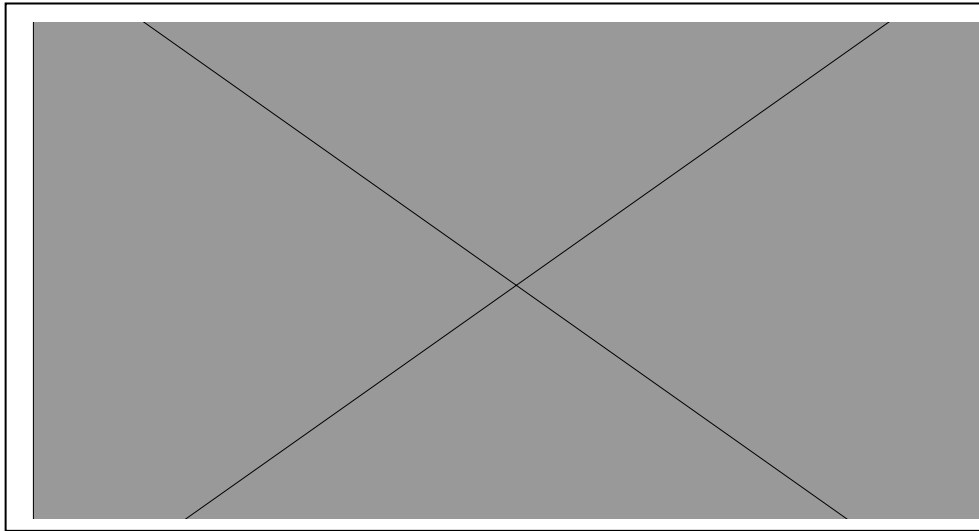


FIGURE 1 UPPER TO LOWER

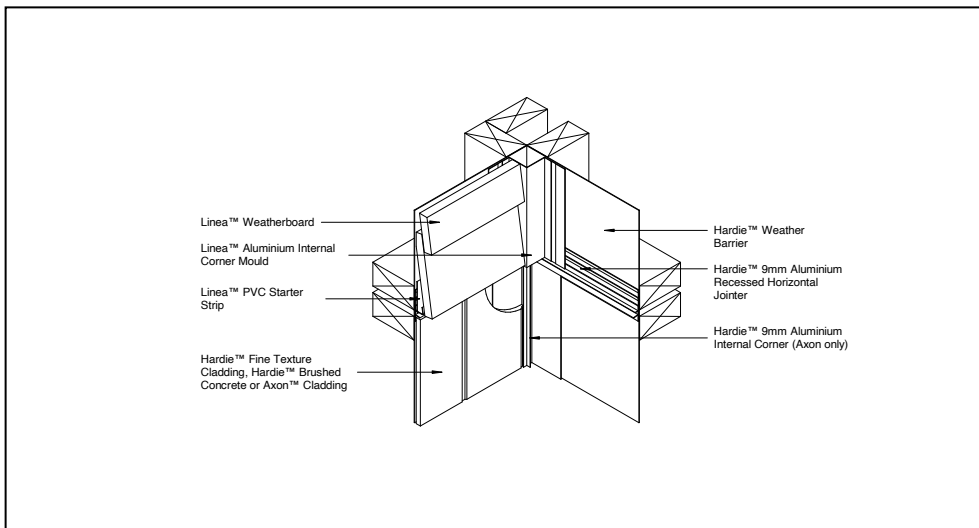


FIGURE 2 DOUBLE STOREY INTERNAL

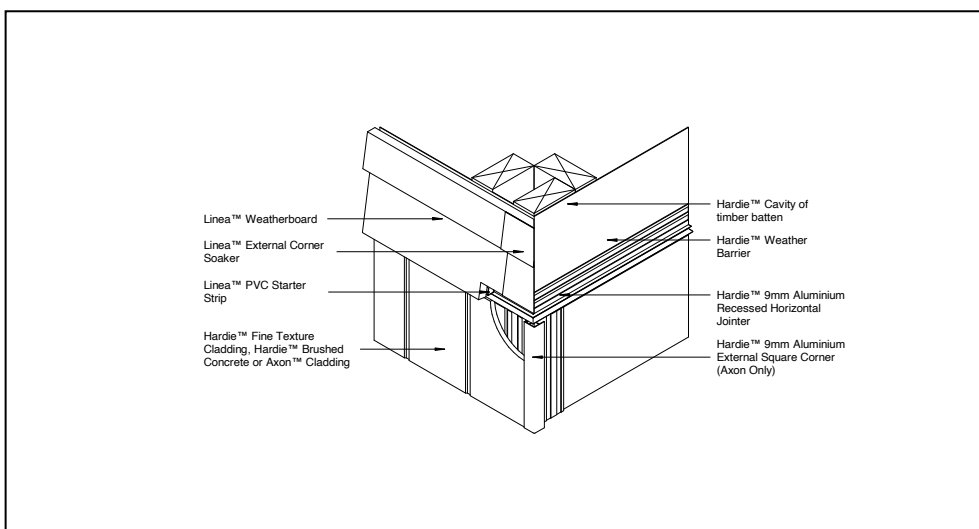


FIGURE 3 DOUBLE STOREY EXTERNAL



2 Direct to Frame (side by side)

PANEL

WEATHERBOARD

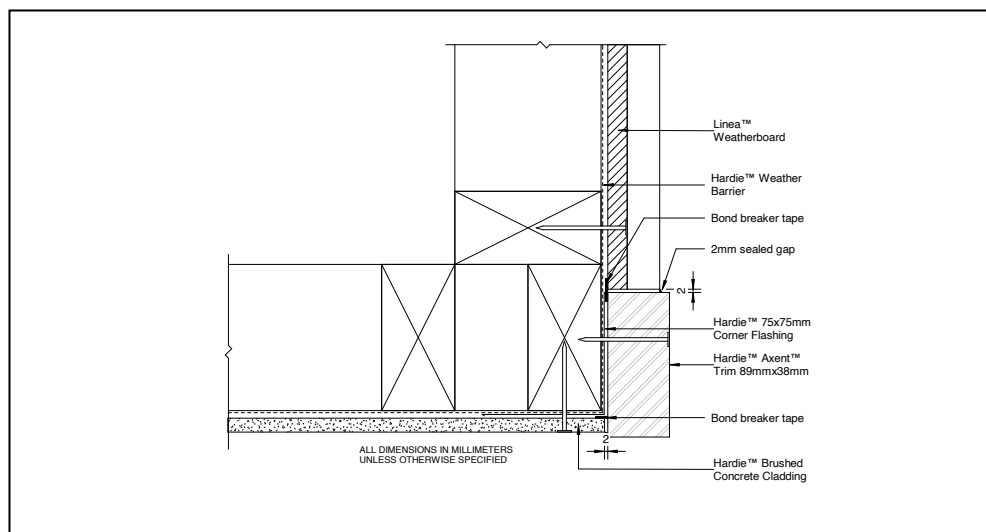


FIGURE 4 SINGLE STOREY EXTERNAL CNR

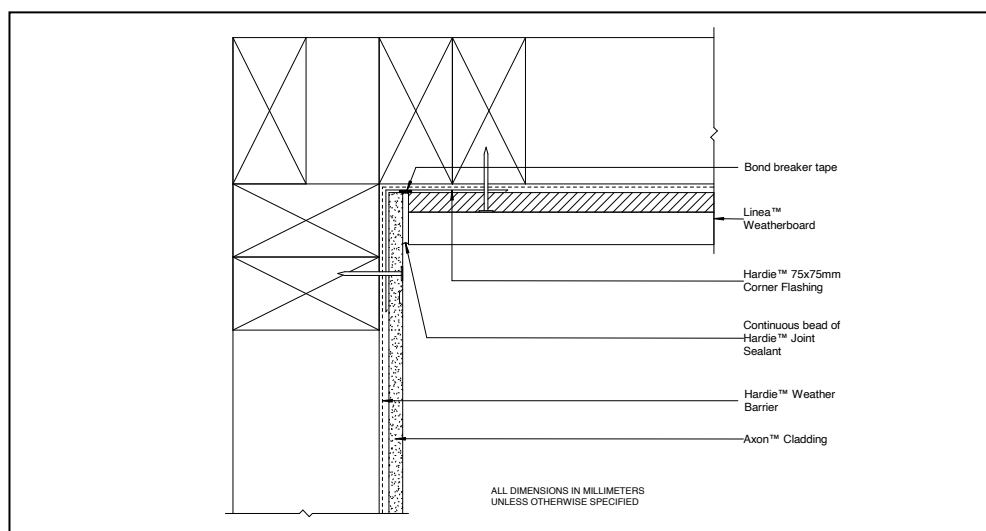


FIGURE 5 SINGLE STOREY INTERNAL CNR

3 Direct to Cavity

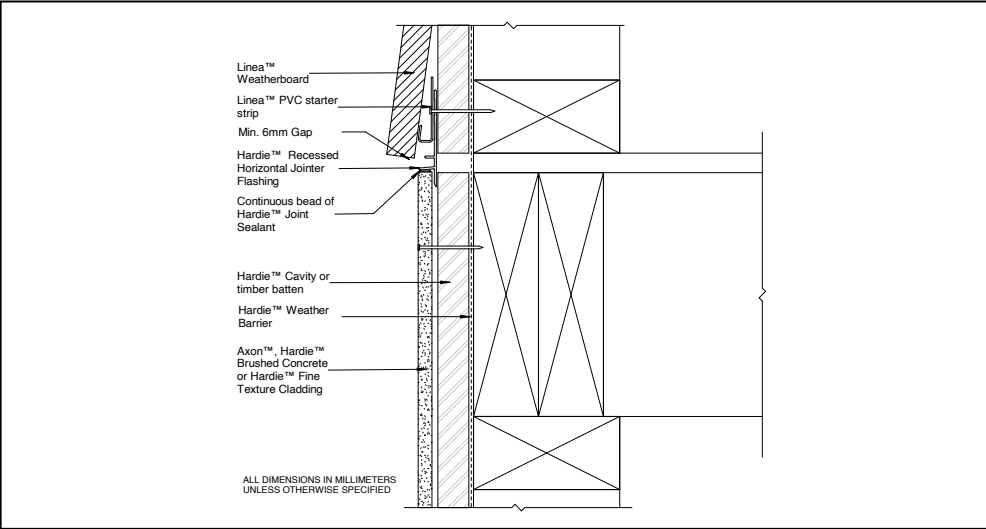
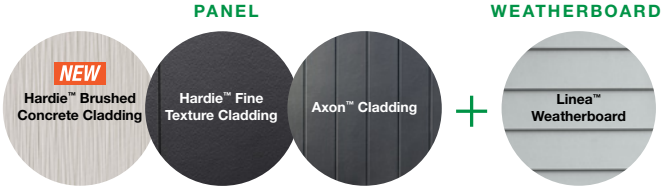


FIGURE 6 UPPER TO LOWER

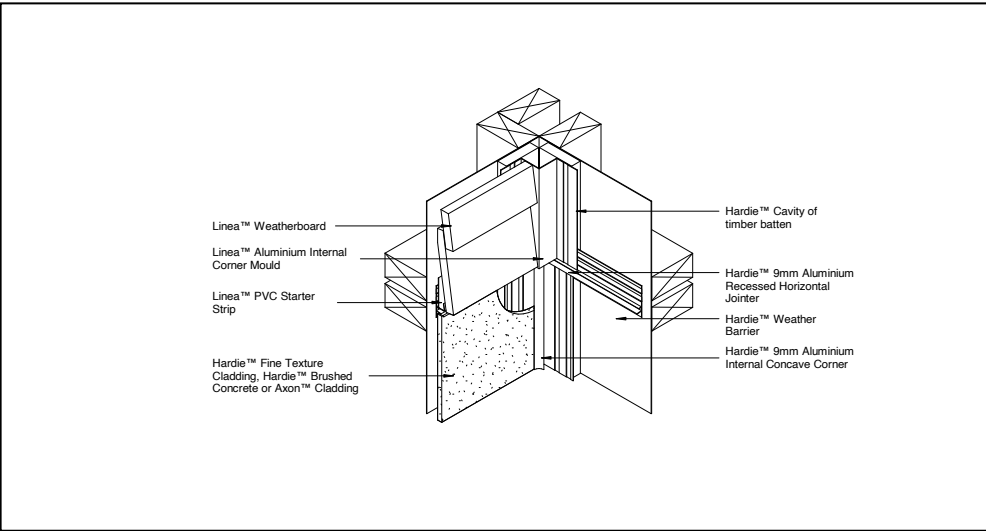


FIGURE 7 DOUBLE STOREY INTERNAL

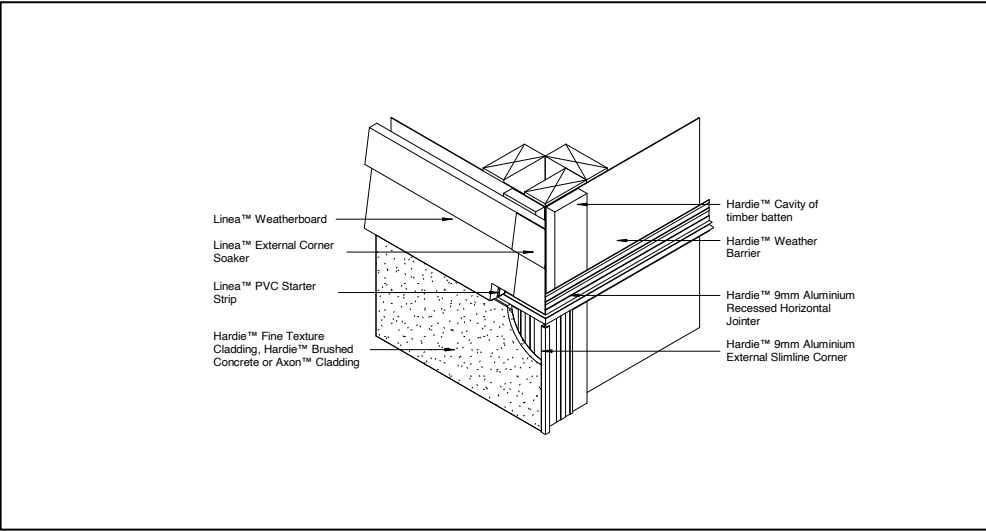


FIGURE 8 DOUBLE STOREY EXTERNAL

4 Direct to Cavity (side by side)

PANEL

WEATHERBOARD

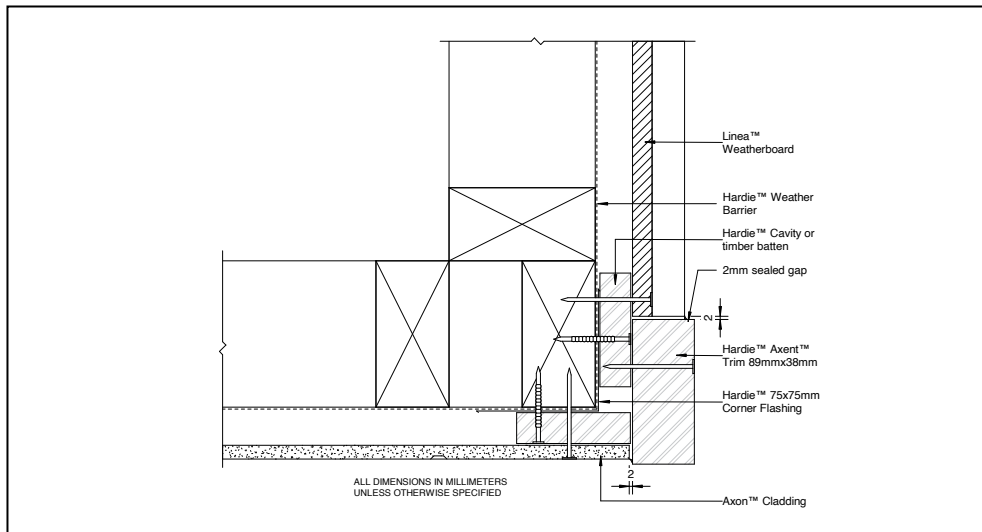


FIGURE 9 SINGLE STOREY EXTERNAL CNR

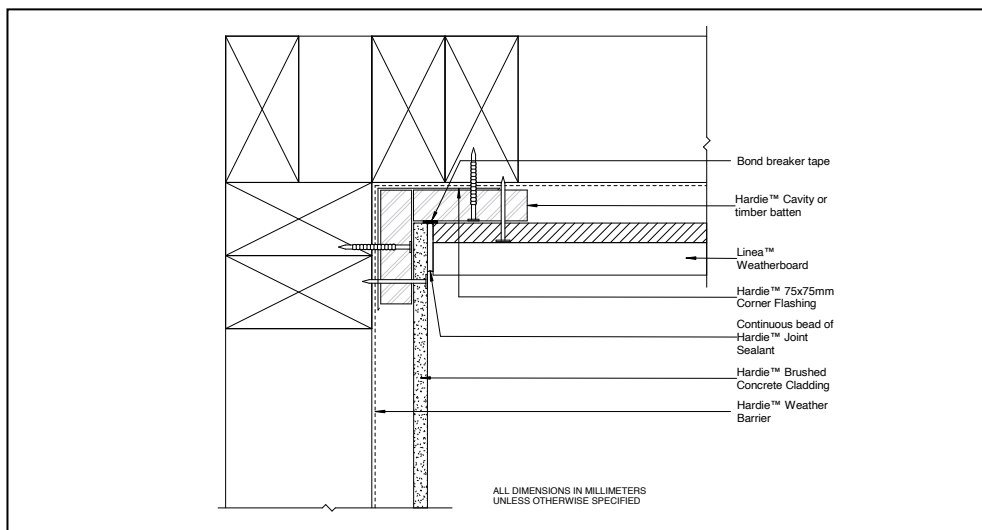


FIGURE 10 SINGLE STOREY INTERNAL CNR



**Stria™ Cladding
and Hardie™ Fine
Texture Cladding**
Kings Meadows, TAS

Panel to Board

Dial up the contemporary look of horizontal and vertical lines, using panels to create a subtle backdrop.



The perfect cladding combination for contemporary looks – think Box Modern or Mid-Century Modern.

Axon™ Cladding and Stria™ Cladding
Suburb, TBC



Axon™ Cladding and Stria™ Cladding
Gerringong, NSW



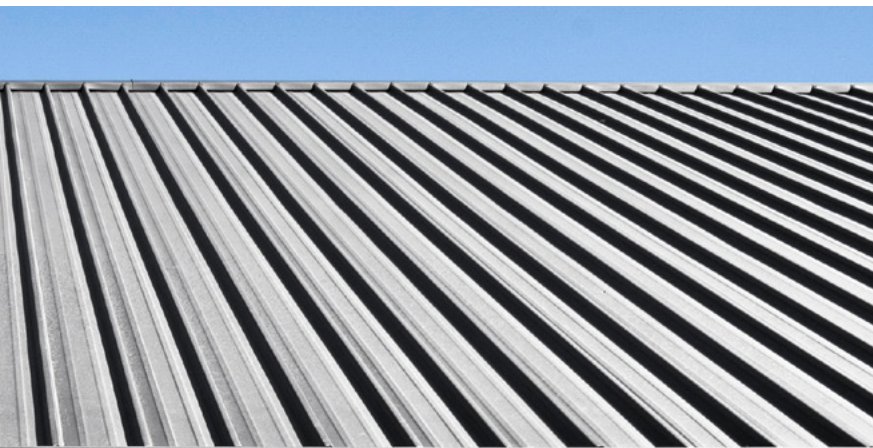
PANEL



BOARD







Turn the page for comprehensive guidance on direct to frame or direct to cavity installation, using Hardie™ accessories.



Axon™ Cladding and Hardie™ Fine Texture Cladding
Wodonga, VIC

1 Direct to Frame

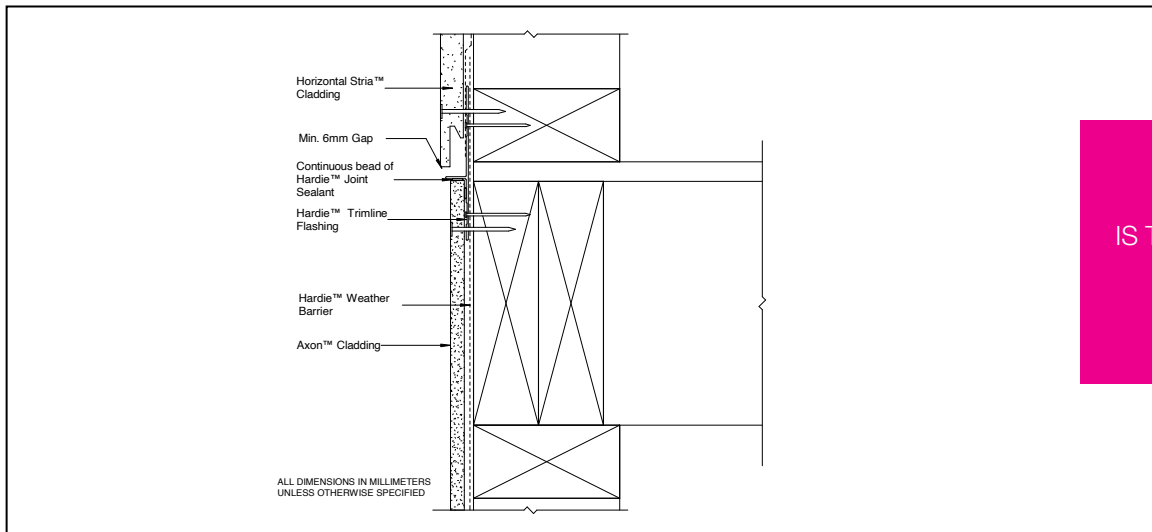
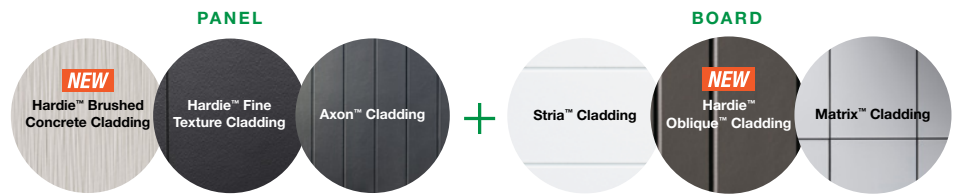


FIGURE 11 UPPER TO LOWER

IS THERE A RENDER FOR THIS?

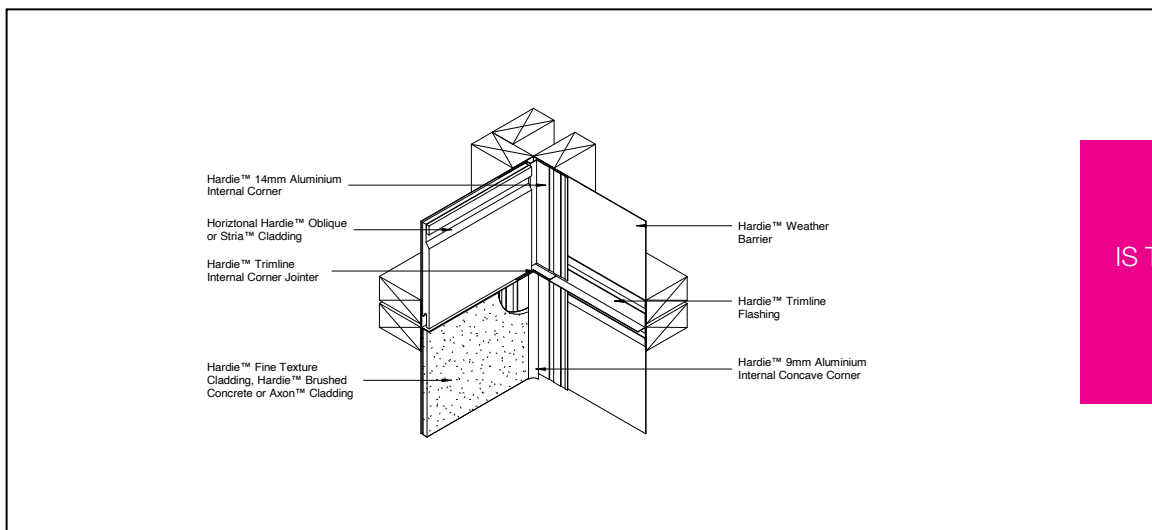


FIGURE 12 DOUBLE STOREY INTERNAL

IS THERE A RENDER FOR THIS?

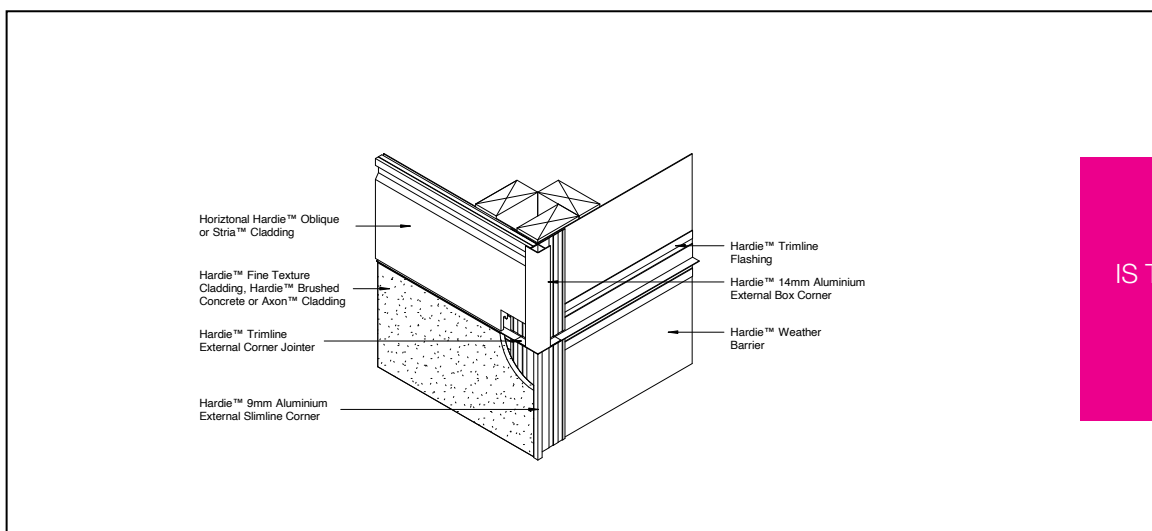


FIGURE 13 DOUBLE STOREY EXTERNAL

IS THERE A RENDER FOR THIS?

2 Direct to Cavity

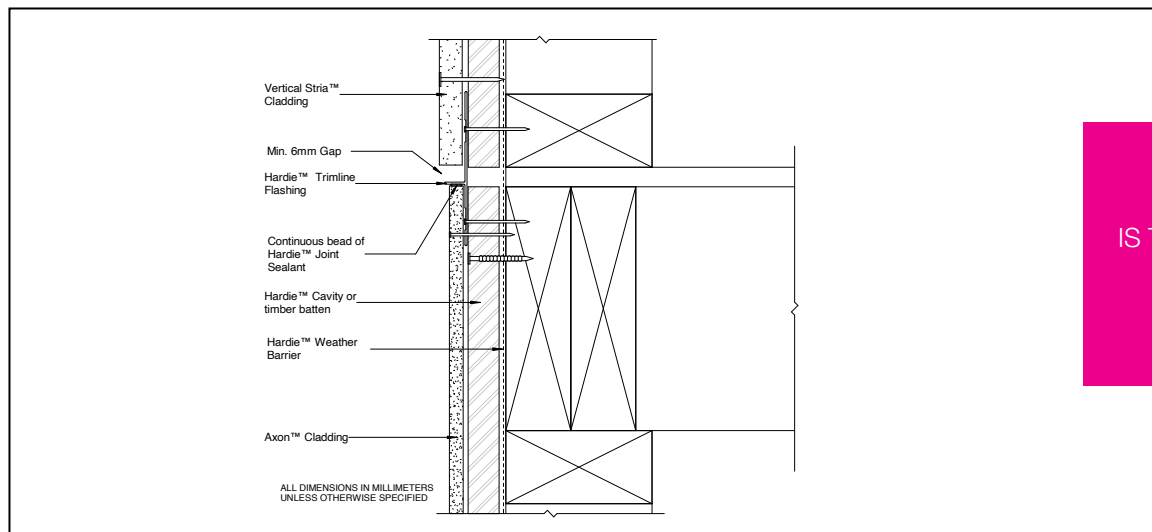
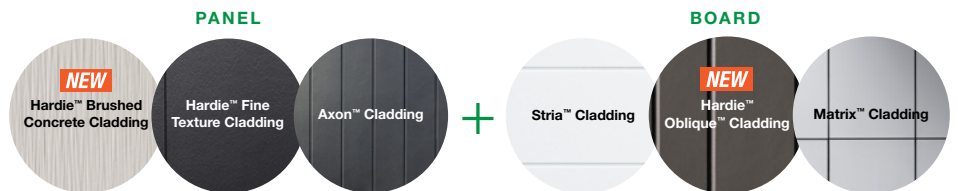


FIGURE 14 UPPER TO LOWER

IS THERE A RENDER FOR THIS?

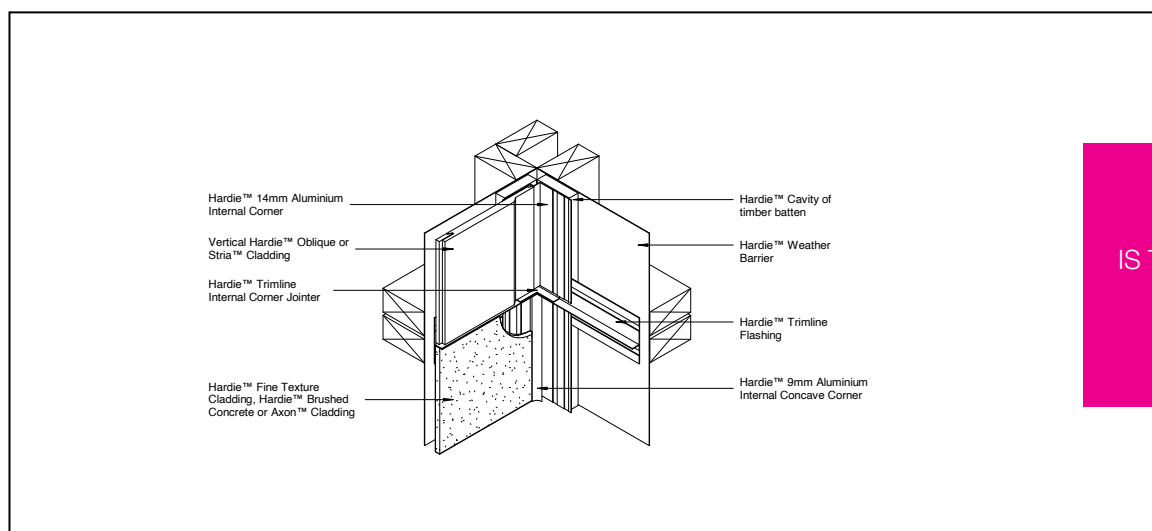


FIGURE 15 DOUBLE STOREY INTERNAL

IS THERE A RENDER FOR THIS?

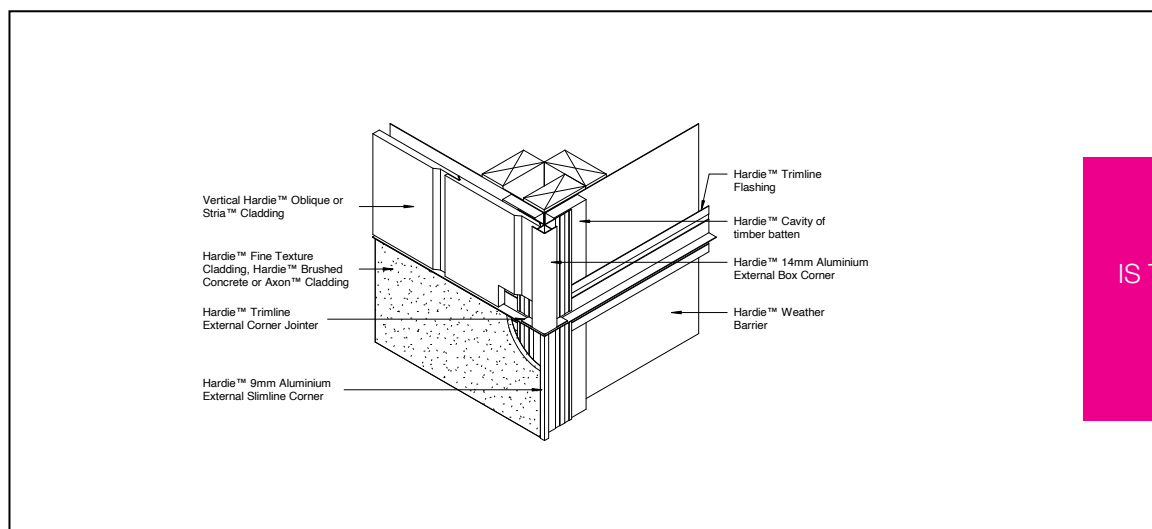


FIGURE 16 DOUBLE STOREY EXTERNAL

IS THERE A RENDER FOR THIS?

3 Direct to Cavity

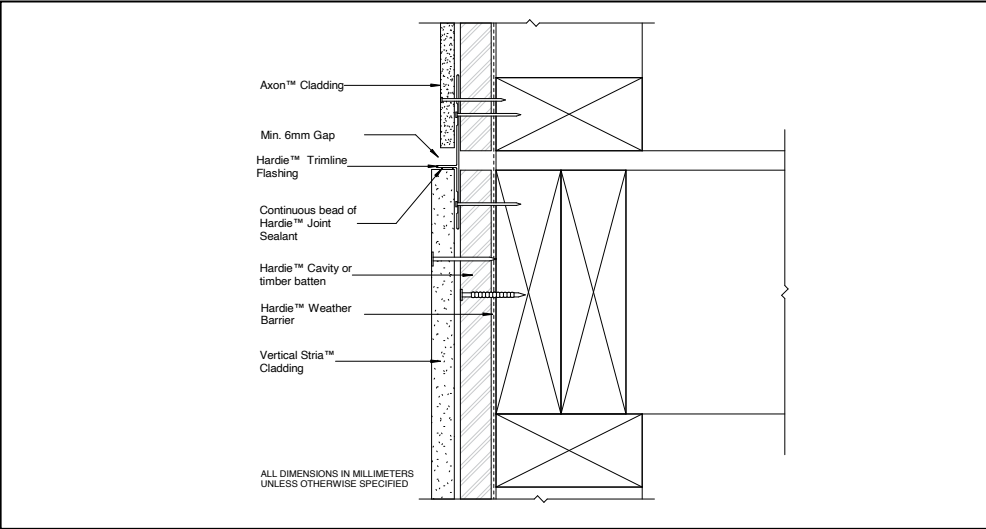


FIGURE 17 UPPER TO LOWER

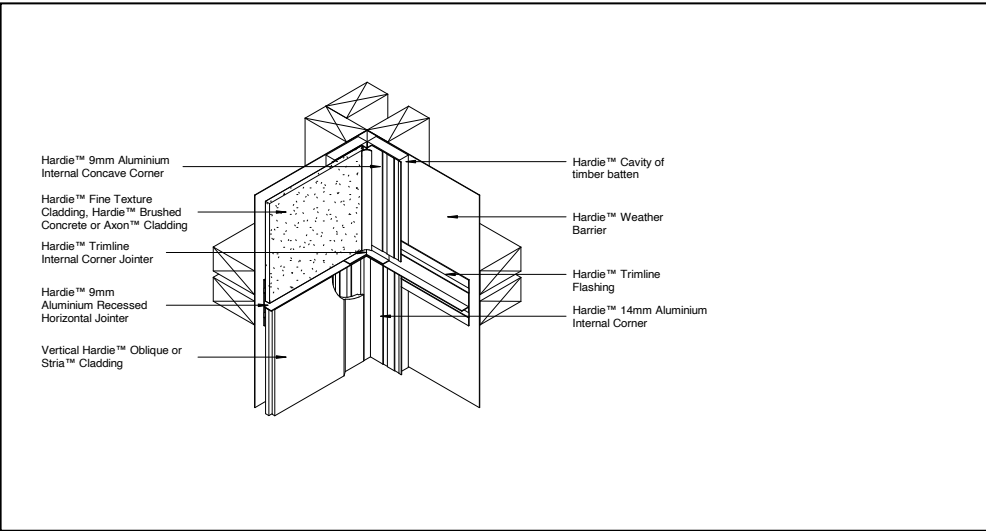


FIGURE 18 DOUBLE STOREY INTERNAL

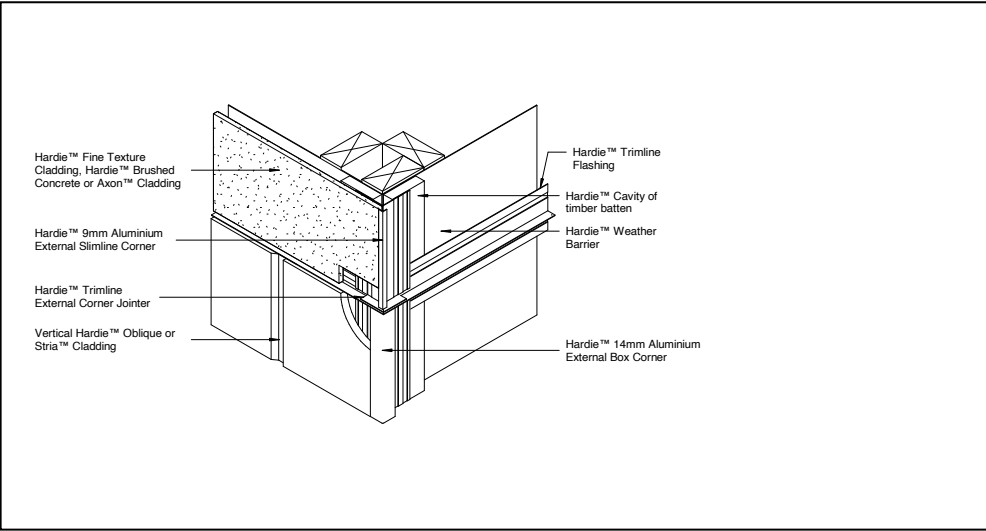


FIGURE 19 DOUBLE STOREY EXTERNAL

4 Direct to Cavity

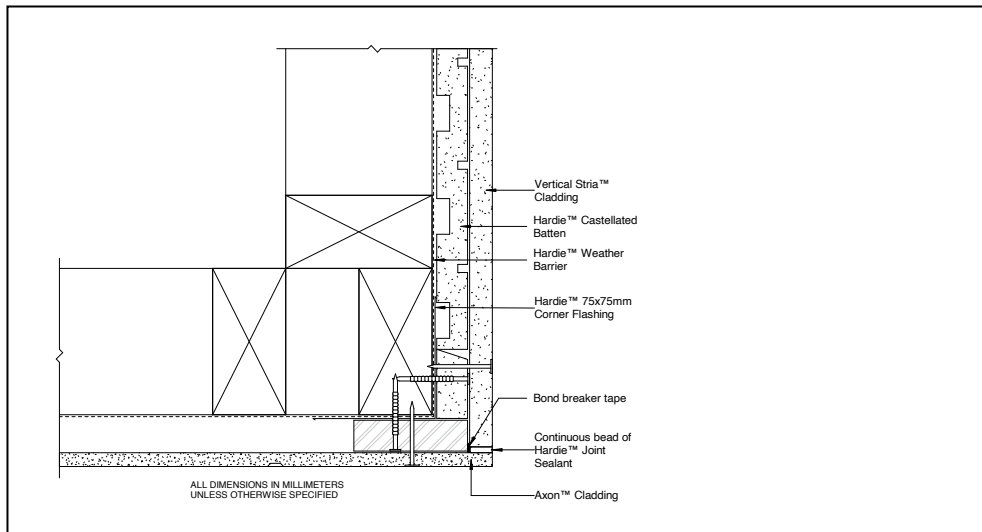


FIGURE 20 SINGLE STOREY EXTERNAL CNR

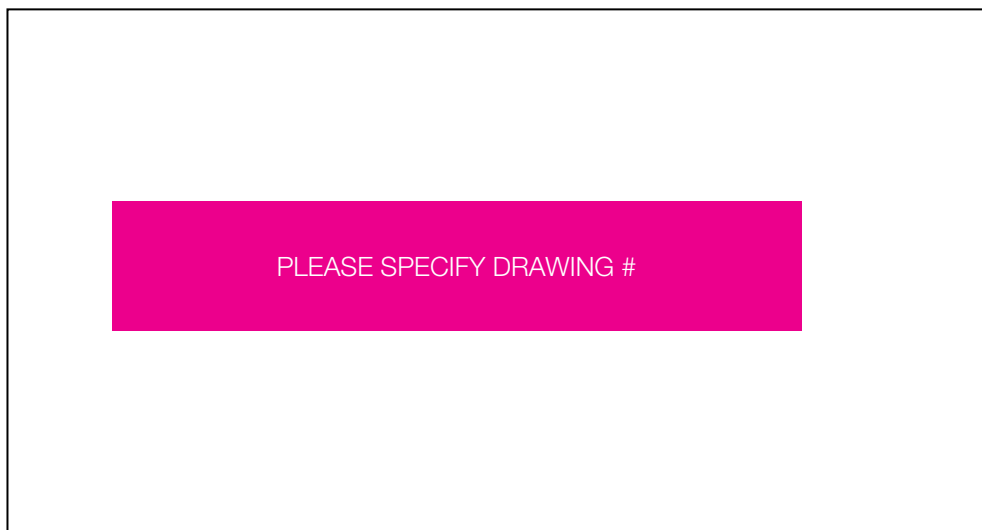


FIGURE 21 SINGLE STOREY INTERNAL CNR

5 Direct to Frame

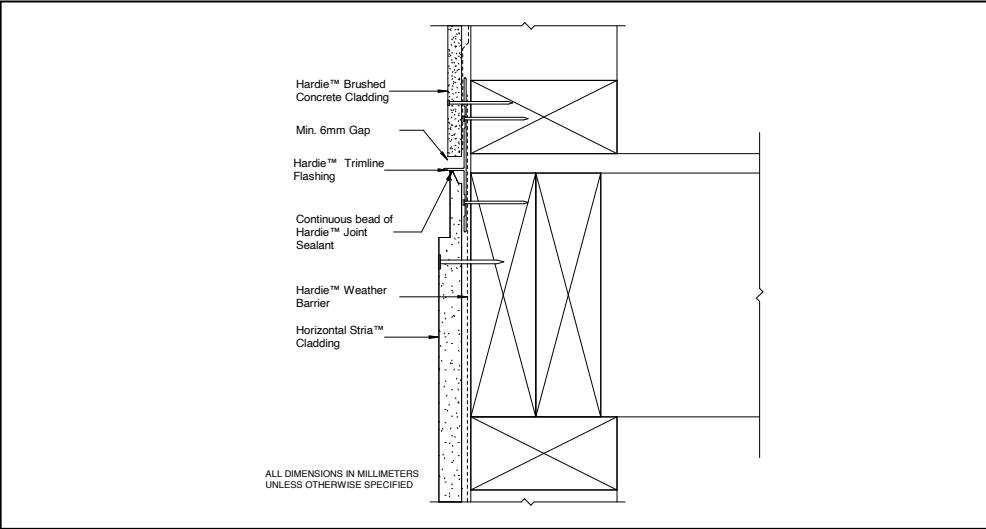


FIGURE 22 UPPER TO LOWER

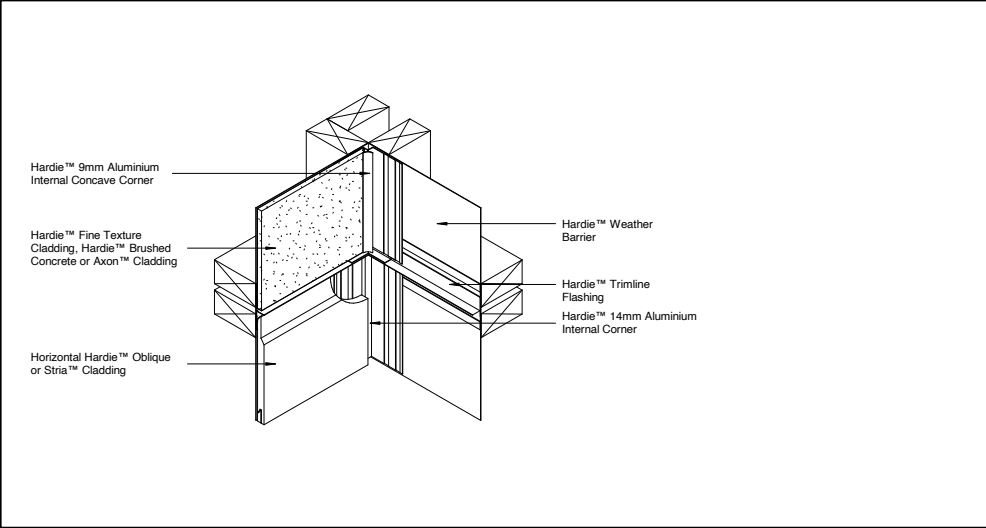


FIGURE 23 DOUBLE STOREY INTERNAL

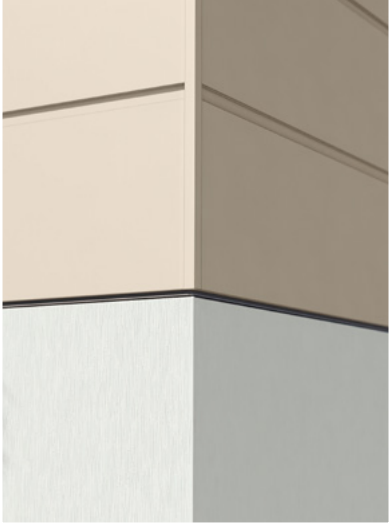
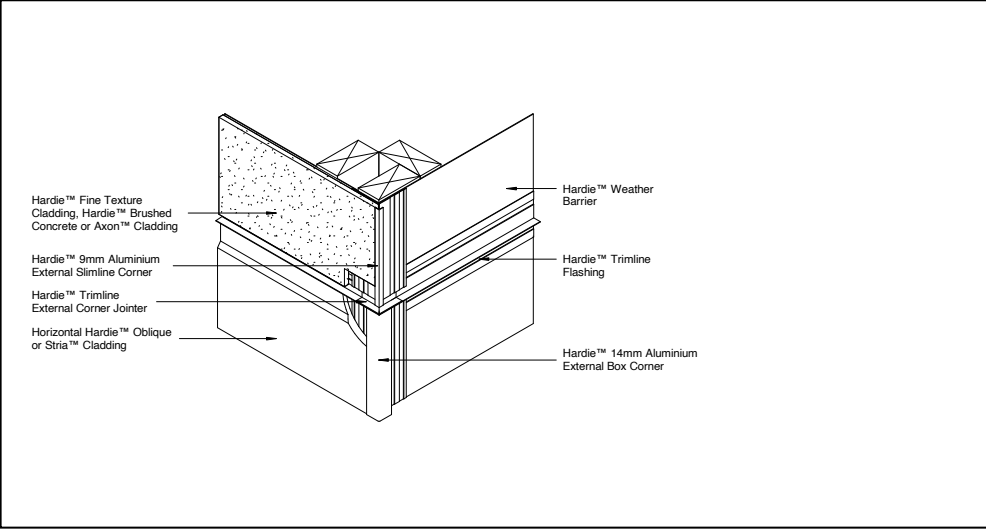


FIGURE 24 DOUBLE STOREY EXTERNAL

6 Direct to Frame

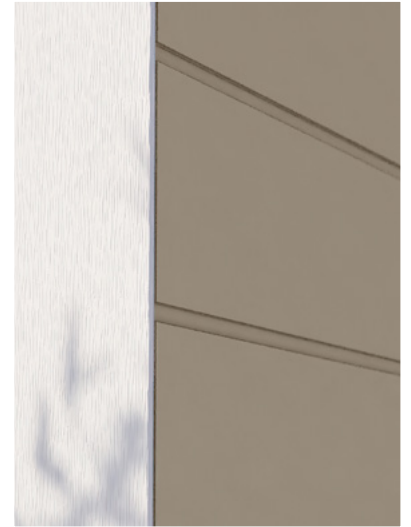
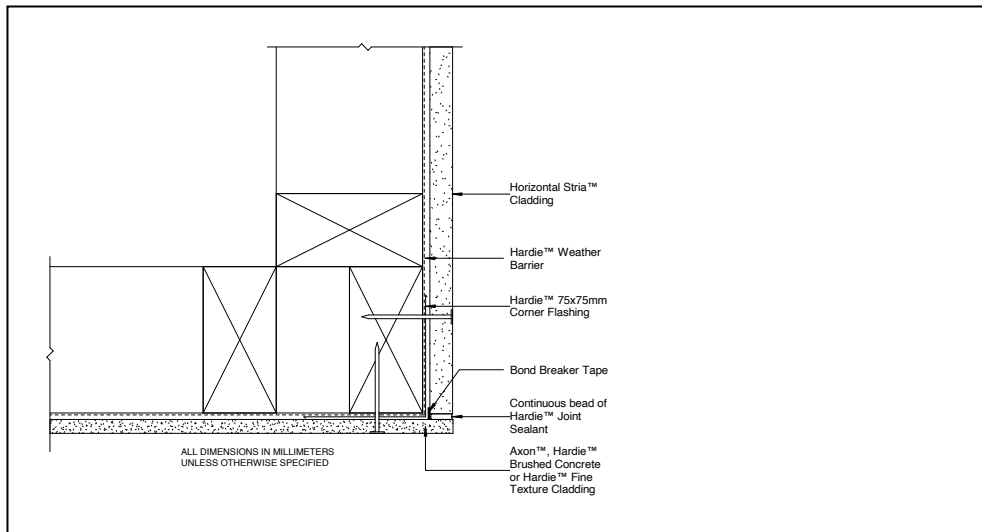
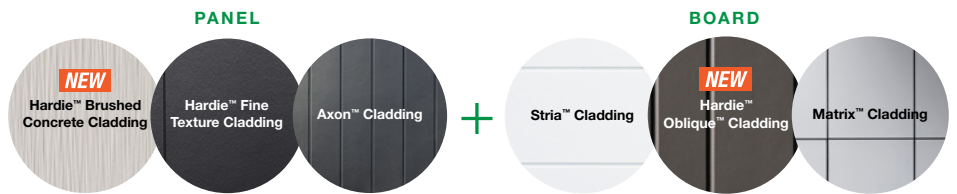


FIGURE 25 SINGLE STOREY EXTERNAL CNR

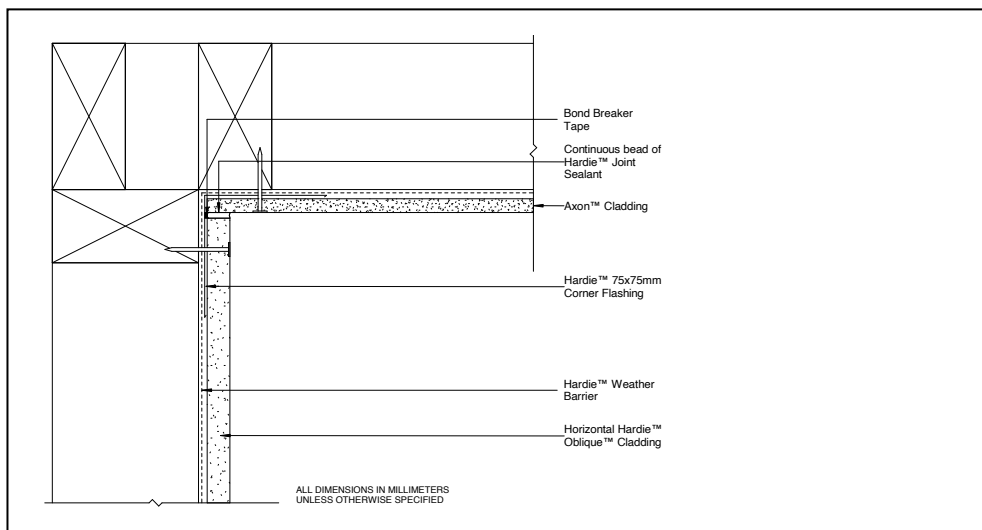


FIGURE 26 SINGLE STOREY INTERNAL CNR



Panel to Panel

Mix and match panels for an effortlessly modern look. The clean vertical lines of Axon™ Cladding shine against the sand texture of Hardie™ Fine Texture Cladding or the artisan cement look of Hardie™ Brushed Concrete Cladding.





**Hardie™ Fine Texture
Cladding and
Axon™ Cladding**
TBA



**Hardie™ Fine Texture Cladding
and Axon™ Cladding**
Bundeena, NSW



**Hardie™ Fine
Texture Cladding
and Axon™ Cladding**
Prahran, VIC



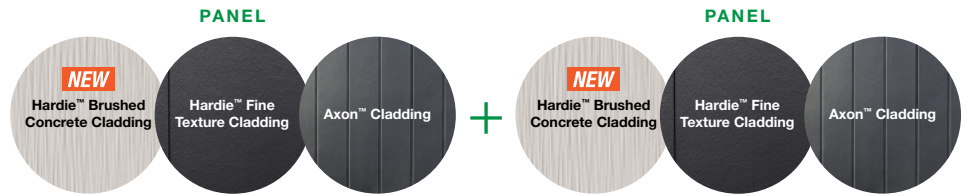
**Hardie™ Brushed
Concrete Cladding
and Axon™ Cladding**
Strathfield, NSW



**Hardie™ Fine Texture Cladding
and Axon™ Cladding**
Wodonga, VIC

Turn the page for comprehensive guidance
on direct to frame or direct to cavity
installation, using Hardie™ accessories.

1 Direct to Frame



PLEASE SPECIFY DRAWING #



FIGURE 27 UPPER TO LOWER

PLEASE SPECIFY DRAWING #



FIGURE 28 DOUBLE STOREY INTERNAL

PLEASE SPECIFY DRAWING #



FIGURE 29 DOUBLE STOREY EXTERNAL

2 Direct to Frame (side by side)

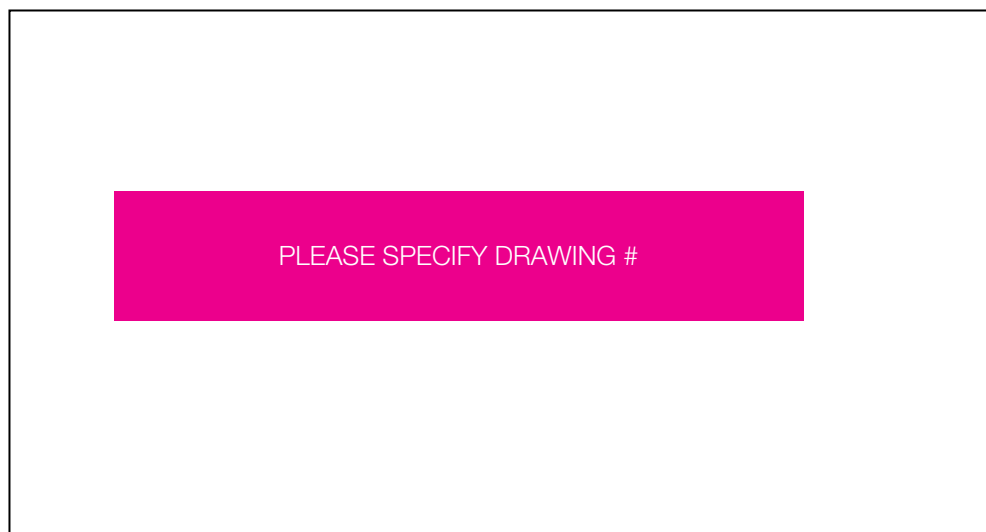


FIGURE 30 SINGLE STOREY EXTERNAL CNR

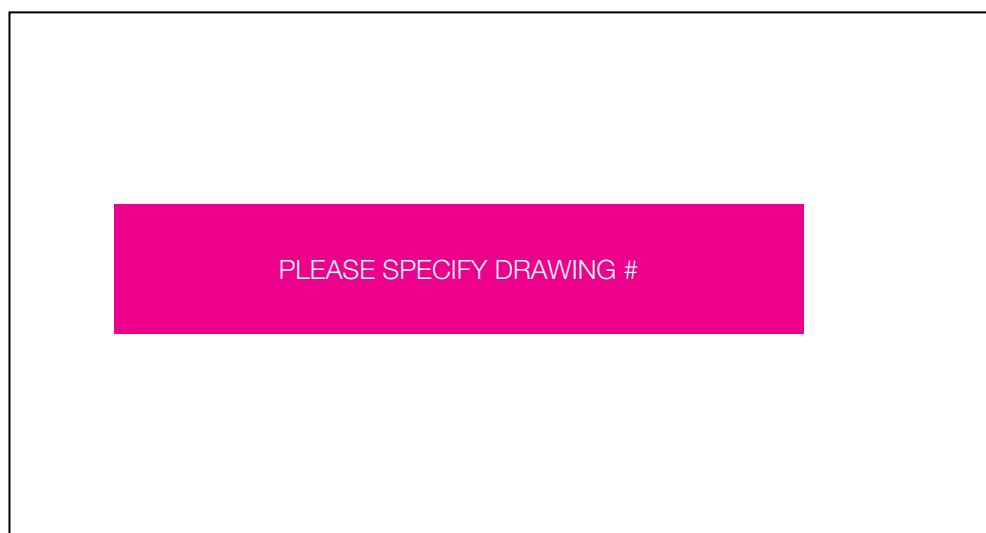
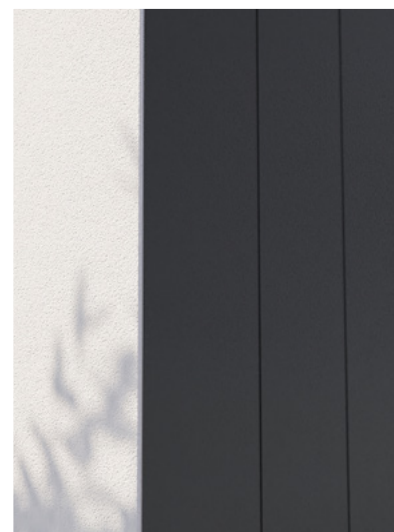


FIGURE 31 SINGLE STOREY INTERNAL CNR



3 Direct to Cavity

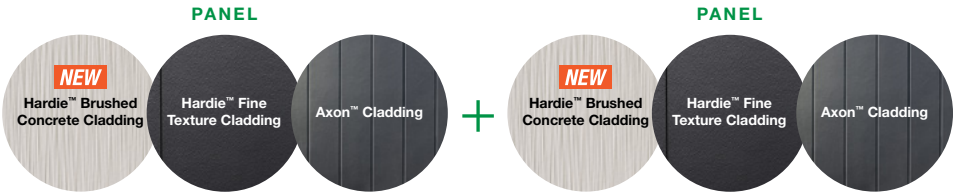


FIGURE 32 UPPER TO LOWER

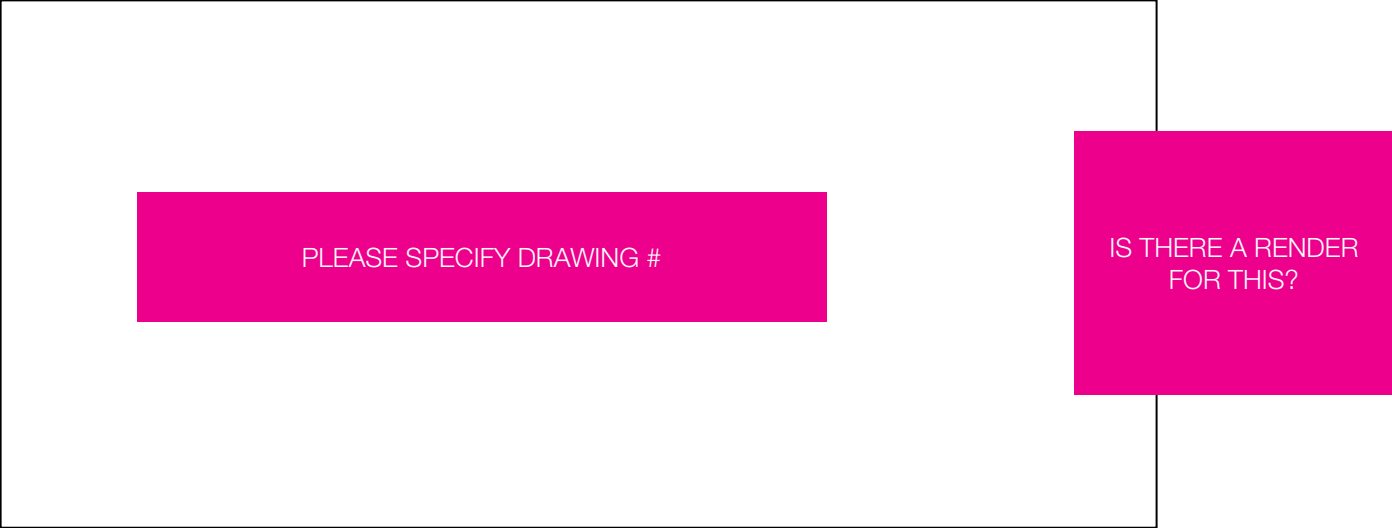


FIGURE 33 DOUBLE STOREY INTERNAL



FIGURE 34 DOUBLE STOREY EXTERNAL

4 Direct to Cavity (side by side)

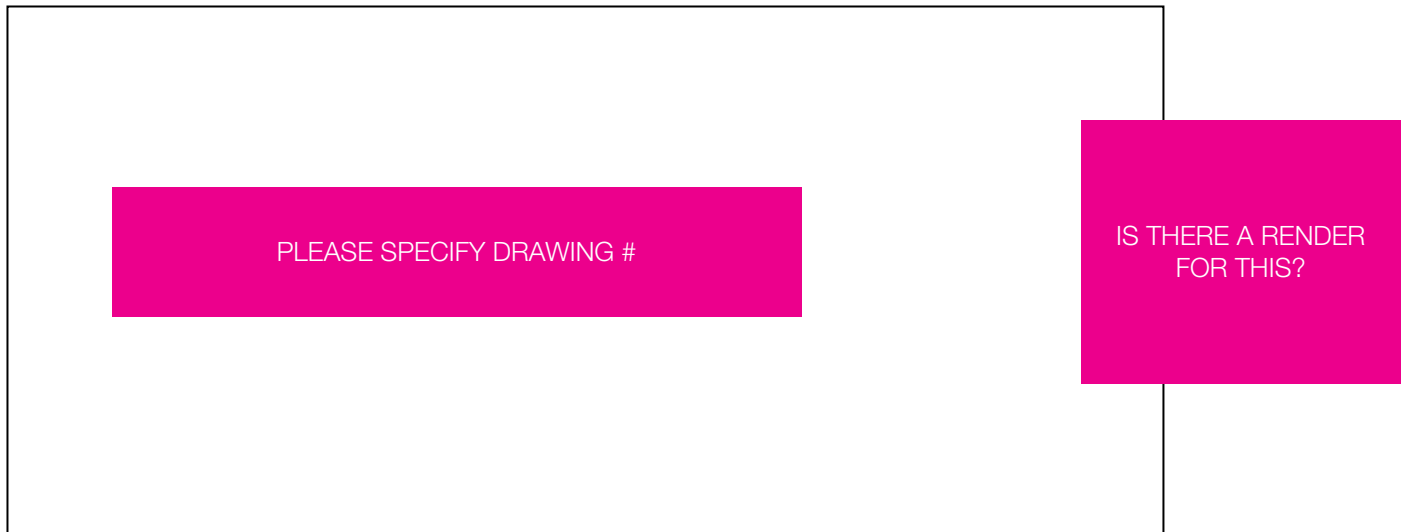
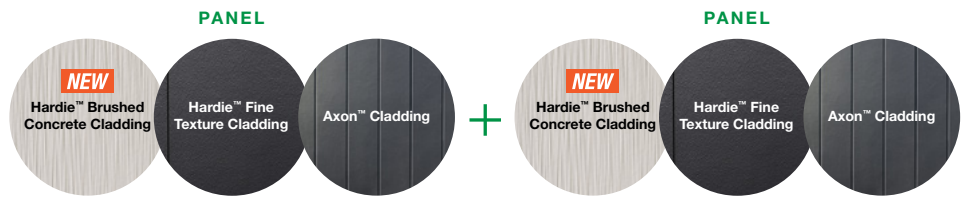


FIGURE 35 SINGLE STOREY EXTERNAL CNR

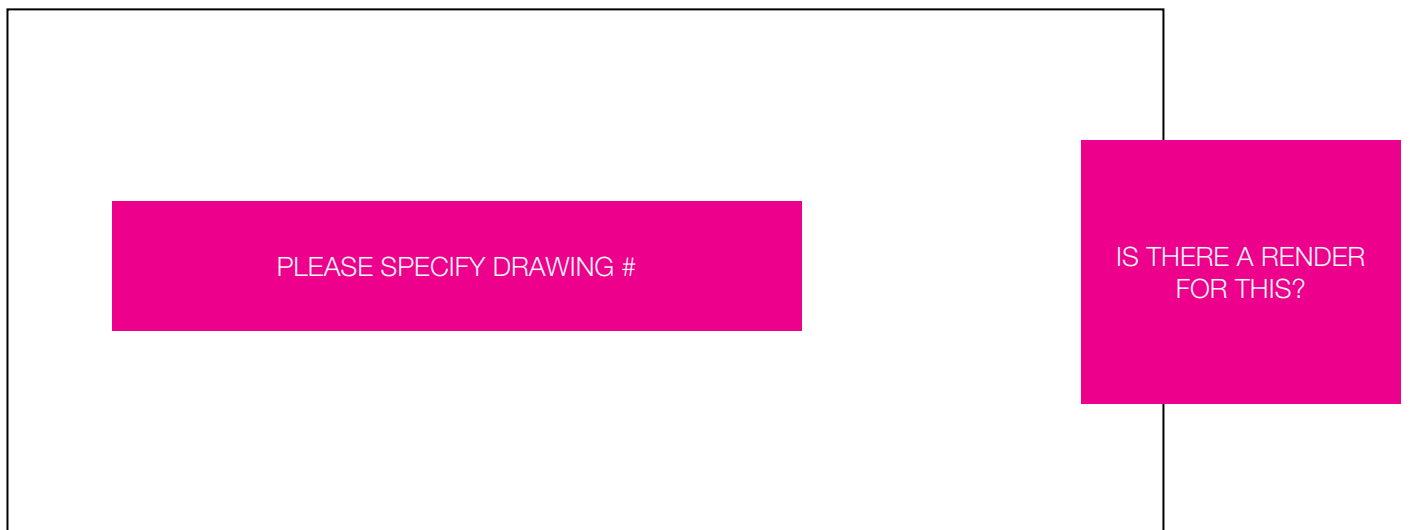


FIGURE 36 SINGLE STOREY INTERNAL CNR



Where to next?



BIM Downloads

Design and specify Hardie™ Exterior Cladding Solutions with ease using our Revit, Archicad and CAD libraries.

[The Revit library](#) has been created to a best practices standard to ensure ease of use, documentation output, quality visualisation, and performance in a project environment.

For Archicad users, a corresponding library of parametric, intuitive Archicad content developed 100% natively in GDL is available, as is a library of Drafting View CAD blocks for AutoCAD users. Construction Detail Sheets for the range can be downloaded in Revit, PDF, DWG and Image formats.

Product Catalogue

Our [Hardie™ Product Catalogue](#) is the trade professional's go-to guide for all products and accessories, including recommended best usage for building and construction.

Visit our [Specification Tools](#) for the safety data, specifications, technical supplements and application guides you need when designing homes that exceed your clients' expectations.

Discover all the inspiration and advice you need to make your home dreams a reality at [Hardie™ Home Guide](#). Our experts and visionary partners are there to help. To see our cladding range, visit our [Find a Display tool](#).

Order a Sample

Experience our curated collection with a free sample. Trial your colour options by painting your sample with a low-sheen exterior paint, then see how all of your selections work together to ensure a cohesive palette. Our samples are cut to approximately 20cm x 20cm.





**For information and advice
call 13 11 03 | jameshardie.com.au**

Australia June 2023



©2023 James Hardie Australia Pty Ltd ABN 12 084 635 558.
™ and ® denote a trademark or registered trademark owned by James Hardie Technology Ltd.