



Helix Panel 50/75mm AAC Intertenancy & Party Wall Systems

Design & Installation Guide



HELIX



Version 2, September 2025



CONTENTS

1	HELIX INTERTENANCY & PARTY WALL SYSTEMS	5
1.1	System Description	5
2	HELIX AAC PANELS	13
3	NATIONAL CONSTRUCTION CODE (NCC) 2022	14
3.1	Structural Performance, B1D4(b)(ii) & H1D7(4)(a)	14
3.2	Fire Safety Performance, C2D2(2) & 9.3.1(1)(a)(i)	14
3.3	Non Combustible, C2D10	15
3.4	Fire Hazard Properties, C2D11	15
3.5	Acoustic Performance, F7P2, F7P4, H4P6(2) & 10.7.1	15
3.6	Thermal Performance, J4D6, H6D2(1) & 13.2.5	17
4	SYSTEM COMPONENTS	18
4.1	Helix Panel, common to all systems	18
4.1.1	50mm AAC Panel	18
4.1.2	75mm AAC Panel	18
4.2	Helix 50/75mm Party Wall Systems (Variants 1, 2, 3 & 4) Components	19
4.2.1	Aluminium Wall Brackets	19
4.2.2	Damp Proof Course	19
4.2.3	Flashings	19
4.2.4	Panel Screws	19
4.2.5	Bracket Screws	19
4.2.6	Thin Bed Adhesive Mortar	19
4.2.7	Mineral Wool – Horizontal Joints	19
4.2.8	Steel & Plasterboard – Horizontal Joints	19
4.2.9	Wall Framing, Plasterboard, Insulation and Fire & Acoustic Rated Sealant	20
4.3	Helix 75mm Intertenancy Wall Systems (Variants 5, 6 & 7), Components	20
4.4	Helix Corridor Wall Systems (Variants 8 & 9), Components	20
4.5	Helix Shaft Wall Systems (WET Variants 10, 11, 12 & 13), Components	20
4.6	Helix Shaft Wall Systems (DRY Variant 14), Components	20
4.7	Helix Services Wall System (Variant 15), Components	21
5	SPECIFICATIONS	22
5.1	Storage and Handling	22
6	INSTALLATION	23
6.1	General	23
6.2	Control Joints and Articulation Joints	23
6.3	Installation Steps	24
6.3.1	Accessories Installation:	24
6.3.2	Panel Installation:	24

CONTENTS

7	CONSTRUCTION DETAILS	25
7.1	Typical Details – Helix 50/75mm Party Wall System (Variants 1, 2, 3 & 4)	25
7.1.1	CROSS SECTION OF VERTICALLY ALIGNED REINFORCED AAC INTERTENANCY DISCONTINUOUS WALL SYSTEM	26
7.1.2	BASE CONNECTION FOR VERTICALLY ALIGNED REINFORCED AAC INTERTENANCY DISCONTINUOUS WALL SYSTEM – OPTION 1	27
7.1.3	BASE CONNECTION FOR VERTICALLY ALIGNED REINFORCED AAC INTERTENANCY DISCONTINUOUS WALL SYSTEM – OPTION 2	28
7.1.4	BASE CONNECTION FOR VERTICALLY ALIGNED REINFORCED AAC INTERTENANCY DISCONTINUOUS WALL SYSTEM – OPTION 3	29
7.1.5	HORIZONTAL JOINT FIXING FOR VERTICALLY ALIGNED REINFORCED AAC INTERTENANCY DISCONTINUOUS WALL SYSTEM – OPTION 1	30
7.1.6	HORIZONTAL JOINT FIXING FOR VERTICALLY ALIGNED REINFORCED AAC INTERTENANCY DISCONTINUOUS WALL SYSTEM – OPTION 2	31
7.1.7	BRACKET FIXING FOR VERTICALLY ALIGNED REINFORCED AAC INTERTENANCY DISCONTINUOUS WALL SYSTEM	32
7.1.8	ROOF VALLEY FOR VERTICALLY ALIGNED REINFORCED AAC INTERTENANCY DISCONTINUOUS WALL SYSTEM	33
7.1.9	ROOF PARAPET FOR VERTICALLY ALIGNED REINFORCED AAC INTERTENANCY DISCONTINUOUS WALL SYSTEM	33
7.1.10	EXTERNAL WALL JUNCTION FOR VERTICALLY ALIGNED REINFORCED AAC INTERTENANCY DISCONTINUOUS WALL SYSTEM	34
7.1.11	EXTERNAL WALL CORNER FOR VERTICALLY ALIGNED REINFORCED AAC INTERTENANCY DISCONTINUOUS WALL SYSTEM	34
7.1.12	BLADE WALL JUNCTION FOR VERTICALLY ALIGNED REINFORCED AAC INTERTENANCY DISCONTINUOUS WALL SYSTEM	35
7.1.13	STEP IN ROOF FOR VERTICALLY ALIGNED REINFORCED AAC INTERTENANCY DISCONTINUOUS WALL SYSTEM	36
7.2	Helix 75mm Intertenancy Wall large concealed water services both sides (Variants 5, 6 & 7)	37
7.3	Helix 75mm Corridor Wall concealed water services one side (Variants 8 & 9)	37
7.4	Helix 75mm Shaft Wall adjacent to wet or common areas (Variants 10, 11, 12 & 13)	38
7.5	Helix 75mm Shaft Wall adjacent to dry habitable rooms (Variant 14)	38
7.6	Helix 75mm Services Wall for walls up 3.3 metres high (Variant 15)	39
8	WARRANTY COVERAGE	40

1 HELIX INTERTENANCY & PARTY WALL SYSTEMS

This guide describes the performance, installation, and typical detailing requirements for Helix 50/75mm AAC Intertenancy & Party Wall Systems for use by designers and builders in load-bearing and no-loadbearing wall applications.

1.1 System Description

At the 'core' of the Helix 50/75mm AAC Intertenancy and Party Wall Systems you will find Helix 50mm or 75mm thickness AAC panels securely mechanically fixed, sealed and supported by structural building elements, typically a concrete slab or non-combustible steel, or timber wall framing.

Helix Intertenancy and Party Wall Systems, provide NCC 2022 compliant Autoclaved Aerated Concrete (AAC) panel Deemed-to-Satisfy acoustic, fire, and thermally rated solutions for internal walls, common walls and separation walls in residential and commercial buildings. Load-bearing party wall applications are typically limited to a maximum height of 12m.

Helix Intertenancy and Party Wall Systems have been tested, appraised and certified to the applicable DTS requirements of the NCC 2022 (Amdt.1), Volumes One, Two & Housing Provisions for:

Structure: B1D4(b)(ii) Determination of structural resistance of materials and forms of construction in accordance with AS 5146.1 and AS 5146.3; and H1D7(4)(a) when designed and constructed in accordance with AS 5146.1.

Fire Safety: C2D2(2) and 9.3.1(1)(a)(i) for Fire Resistance Level tested and assessed to AS 1530.4 for FRL 120/120/120, (note AS 5146.3 Cl.2.6.2 provisions are for non-load bearing walls only).

Non-Combustible: C2D10(5)(e), Autoclaved aerated concrete, including mortar are non-combustible and may be used wherever a non-combustible material is required.

Fire Hazard Properties: C2D11(3) do not apply to Autoclaved aerated concrete. Internal wall linings, materials and assemblies to comply with C2D11(1)(b) (S7C4 & S7C7).

Sound Insulation: F7P2, F7P4, and H4P6 & 10.7.1(1)

Helix 50/75mm Party Wall Systems (*Variants 1, 2, 3 & 4*) and Helix 75mm Intertenancy Wall (*Variants 5, 6 & 7*) achieve $R_w + C_w$ not less than 50 and are discontinuous construction.

Helix 75mm Corridor Wall (*Variants 8 & 9*) achieve R_w not less than 50,

Helix 75mm Shaft Wall (*Variants 10, 11, 12 & 13*), Helix 75mm Shaft Wall (*Variant 14*) and Helix 75mm Services Wall (*Variant 15*) achieve R_w not less than 25.

Energy Efficiency: J4D6, and H6D2(1), 13.2.5. Systems achieve high Total R-values which may be used to satisfy J4D6 and H6D2(1) external wall insulation requirements, or as input to house energy rating software to achieve an energy rating.



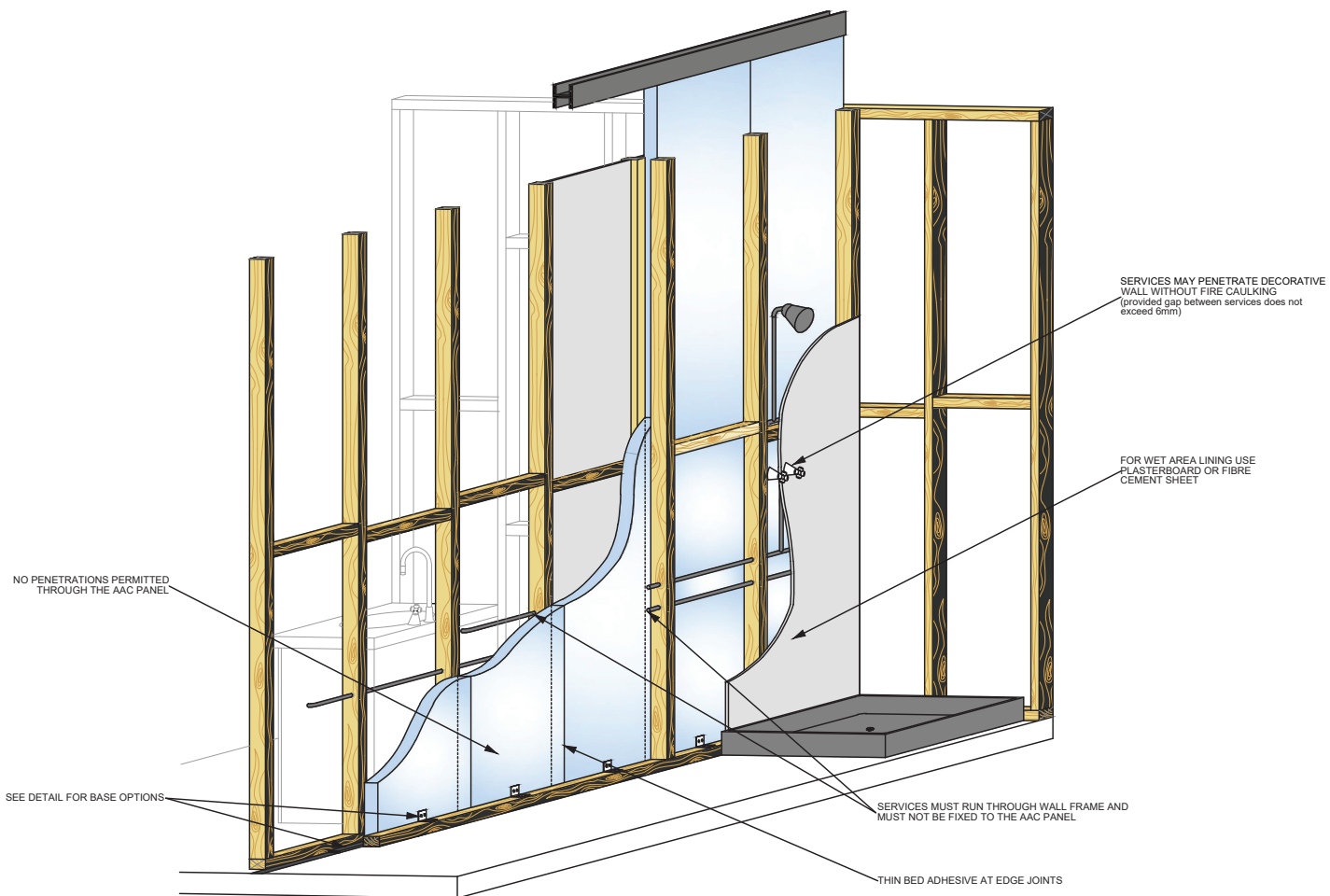


Figure 1: Helix 50/75mm Party Wall Systems (Variants 1, 2, 3 & 4)

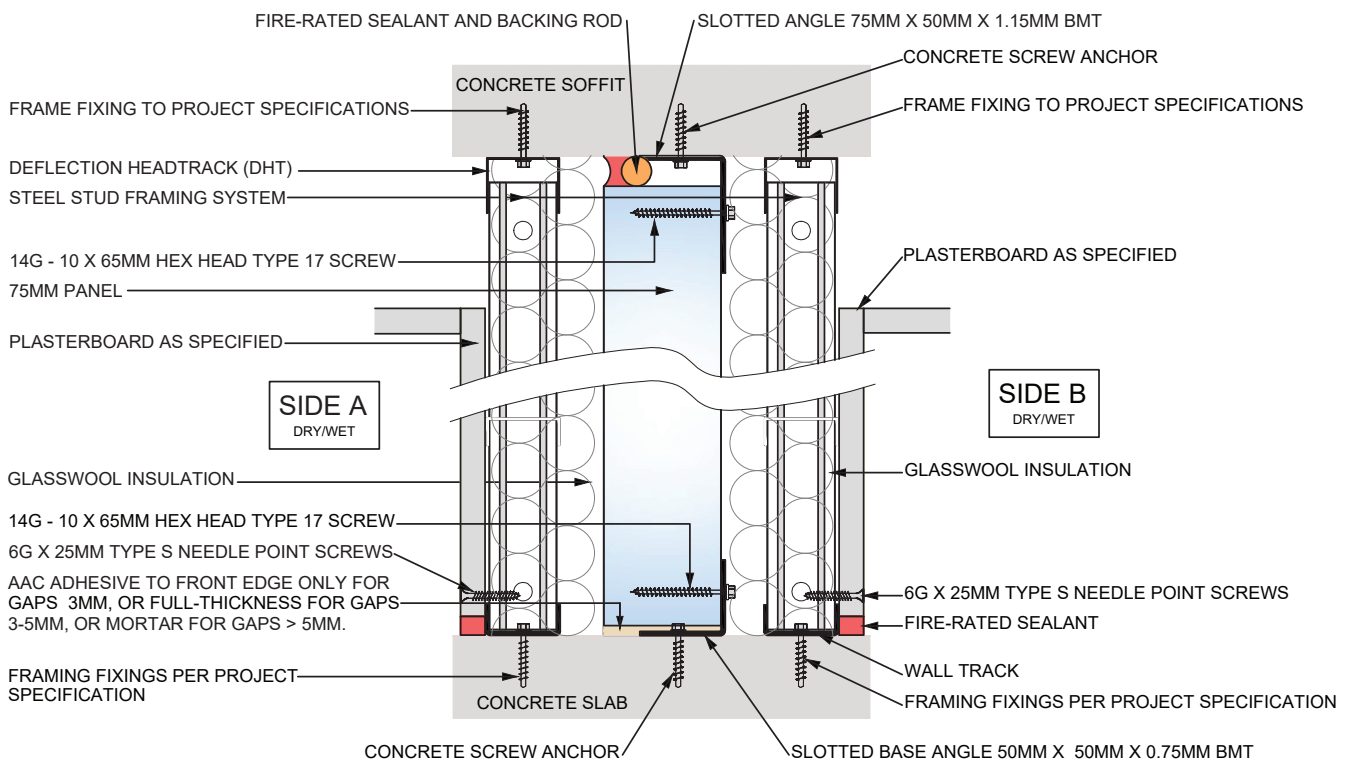


Figure 2: Helix 75mm Intertency Wall Systems – large concealed water services both sides (Variants 5, 6 & 7)

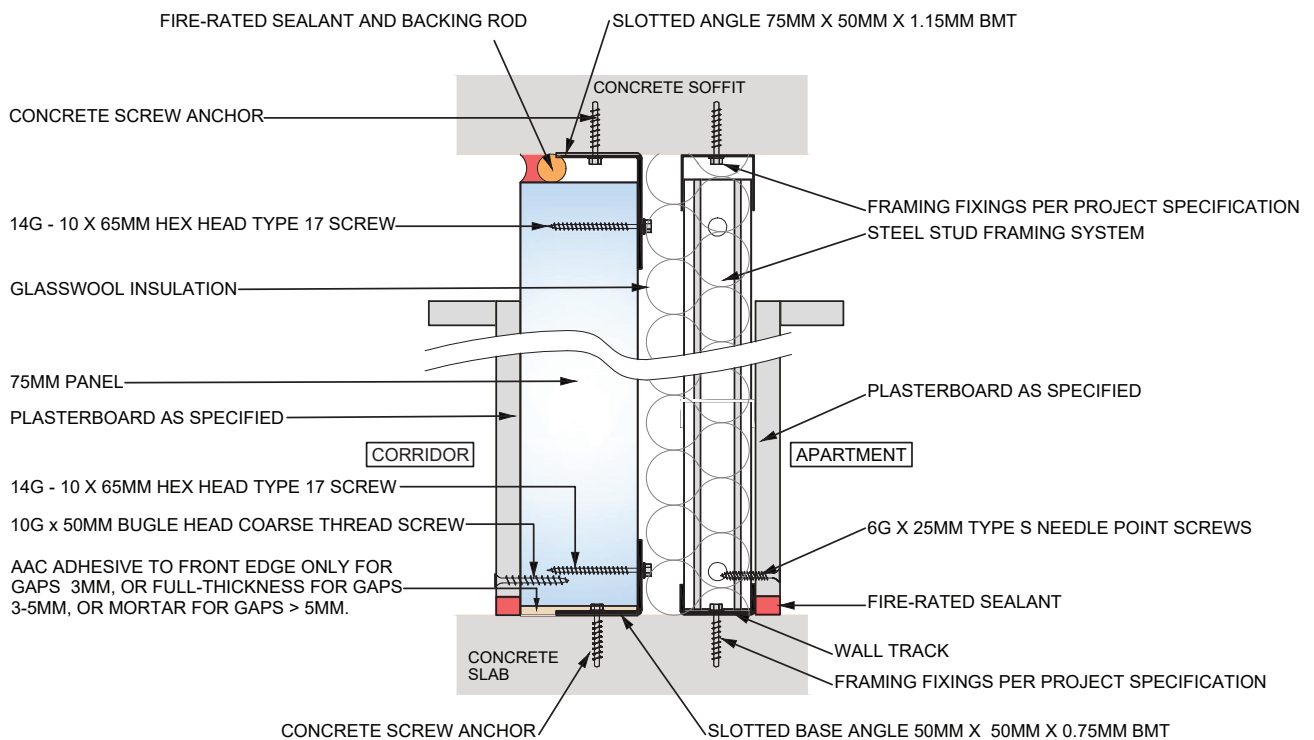


Figure 3: Helix 75mm Corridor Wall Systems – concealed water services one side (Variants 8 & 9)

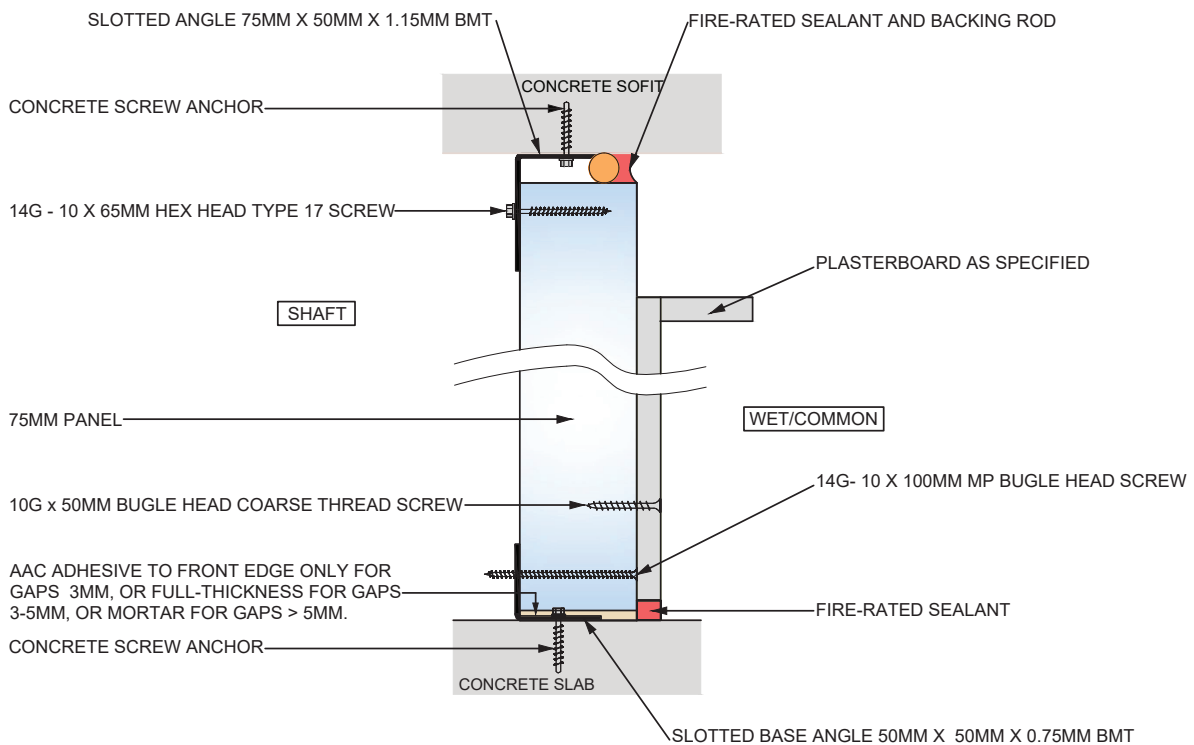


Figure 4 (a) Shaft Wall adjacent to wet or common areas (Variants 10, 11, 12 & 13),

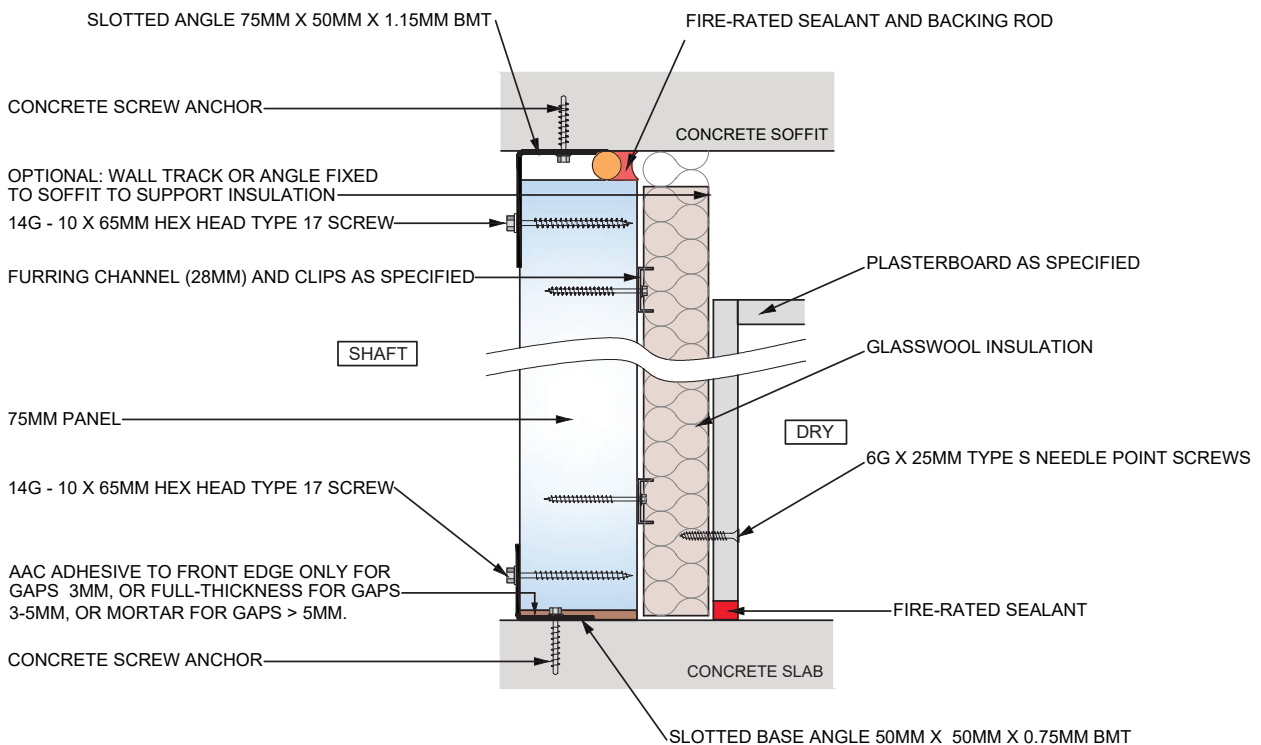


Figure 4 (b) Shaft Wall adjacent to dry habitable rooms (Variant 14)

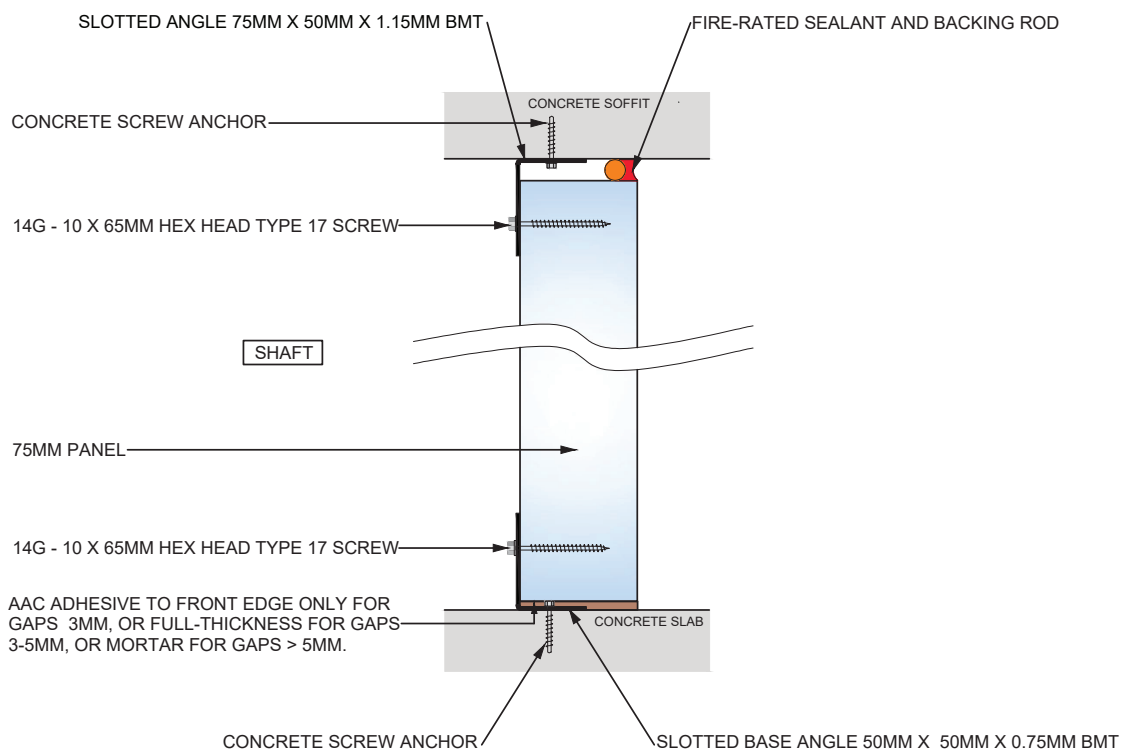


Figure 5: Helix 75mm Services Wall System - up to 3.3m height (Variant 15)

Helix 50/75mm AAC Intertenancy and Party Wall Systems are lightweight and easy to install.

They provide a high performing wall solutions for most buildings requiring fire, acoustic & thermally rated walls.

They are versatile and provide design freedom able to be installed on all types of elements such as concrete slab-on ground or timber or steel wall framing.

Helix 50/75mm AAC Intertenancy and Party Wall Systems provide the necessary FRL, and airborne & impact sound insulation required by NCC 2022 for walls separating dwellings, without the limitations of high mass construction.

Helix panel 50/75mm AAC benefits include:

- Adaptability to a wide-range of architectural designs,
- Lightweight for quick handling & construction,
- Durable to the elements & impact, and
- Detailed to proven Australian Standards for specifiers, builders and installers.

Helix 50/75mm AAC Intertenancy and Party Wall Systems are designed in Australia and are fully compliant to Australian requirements. It represents a proven high-performing construction system used successfully in Australia & Europe for many years. Lightweight and easy to install, it provides an easy to install solution that can be specified with confidence.

Product selection, and incorporation into the building design, must be made by a person who is conversant with the application and technical aspects of the product, and has ready access to the relevant technical information related to the product use.

Product installation must be carried out by a competent tradesperson under the direction of a Builder, both of whom are familiar with the method of installation and have access to all relevant technical information.

Helix 50/75mm AAC Intertenancy and Party Wall Systems

SYSTEM	Variant	Plasterboard	Stud Framing 450mm (up to 600mm c/c)	Insulation Glasswool	Gap (up to 80mm)	Panel	Gap (up to 80mm)	Insulation Glasswool	Stud Framing	Plasterboard
PARTY WALL 50/75mm, timber or steel frames	1	1x13mm, 10.5kg/m ² (impact resistant, fire-rated, acoustic plasterboard)	Timber 70x45, or Steel 70x35x0.55min.	min. R2.0, 70mm, 10kg/m ³	20	50	20	min. R2.0, 70mm, 10kg/m ³	Timber 70x45, or Steel 70x35x0.55min.	1x13mm, 10.5kg/m ² (impact resistant, fire-rated, acoustic plasterboard)
	2	1x13mm, 8.4kg/m ² standard plasterboard	Timber 70x45, or Steel 70x35x0.55min.	min. R2.0, 70mm, 10kg/m ³	40	50	40	min. R2.0, 70mm, 10kg/m ³	Timber 70x45, or Steel 70x35x0.55min.	1x13mm, 8.4kg/m ² standard plasterboard
	3	1x13mm, 8.4kg/m ² standard plasterboard	Timber 90x45, or Steel 90x35x0.55min.	min. R2.0, 70mm, 10kg/m ³	20	50	20	min. R2.0, 70mm, 10kg/m ³	Timber 90x45, or Steel 90x35x0.55min.	1x13mm, 8.4kg/m ² standard plasterboard
	4	1x13mm, 8.4kg/m ² standard plasterboard	Timber 70x45, or Steel 70x35x0.55min.	min. R2.0, 70mm, 10kg/m ³	20	75	20	min. R2.0, 70mm, 10kg/m ³	Timber 70x45, orSteel 70x35x0.55min.	1x13mm, 8.4kg/m ² standard plasterboard

SYSTEM	Variant	Plasterboard	Stud Framing 450mm (up to 600mm c/c)	Insulation Glasswool	Gap (up to 80mm)	Panel	Gap (up to 80mm)	Insulation Glasswool	Stud Framing	Plasterboard
INTERTENANCY WALL large concealed water services both sides	5	1x13mm, 8.4kg/m ² standard plasterboard	Steel 64x35x0.55min. @450mm c/c	min. 75mm, 11kg/m ³ or 50mm, 14kg/m ³	20	75	20	min. 75mm, 11kg/m ³ or 50mm, 14kg/m ³	Steel 64x35x0.55min. @450mm c/c	1x13mm, 8.4kg/m ² standard plasterboard
	6	1x13mm, 8.4kg/m ² standard plasterboard	Steel 64x35x0.55min. @450mm c/c	min. 75mm, 11kg/m ³ or 50mm, 14kg/m ³	20	75	20	min. 75mm, 11kg/m ³ or 50mm, 14kg/m ³	Steel 64x35x0.55min. @450mm c/c	1x13mm, 9.8kg/m ² water-resistant plasterboard
	7	1x13mm, 9.8kg/m ² water-resistant plasterboard	Steel 64x35x0.55min. @450mm c/c	min. 75mm, 11kg/m ³ or 50mm, 14kg/m ³	20	75	20	min. 75mm, 11kg/m ³ or 50mm, 14kg/m ³	Steel 64x35x0.55min. @450mm c/c	1x13mm, 9.8kg/m ² water-resistant plasterboard
CORRIDOR WALL concealed water services one side	8	1x13mm, 8.4kg/m ² standard plasterboard	-	-	-	75	15	50mm, 14kg/m ³	Steel 64x35x0.55min. @450mm c/c	1x13mm, 8.4kg/m ² standard plasterboard
	9	1x13mm, 9.8kg/m ² water-resistant plasterboard	-	-	-	75	15	50mm, 14kg/m ³	Steel 64x35x0.55min. @450mm c/c	1x13mm, 9.8kg/m ² water-resistant plasterboard

SYSTEM	Variant	Plasterboard	Stud Framing 450mm (up to 600mm c/c)	Insulation Glasswool	Gap (up to 80mm)	Panel	Gap (up to 80mm)	Insulation Glasswool	Stud Framing	Plasterboard
SHAFT WALL adjacent to wet or common areas	10	-	-	-	-	75	-	-	-	1x13mm, 9.8kg/m ² water-resistant plasterboard
	11	-	-	-	-	75	-	-	-	1x13mm, 8.4kg/m ² standard plasterboard
	12	-	-	-	-	75	-	-	-	1x13mm, 11.1kg/m ² (moisture resistant, fire-rated plasterboard)
	13	-	-	-	-	75	-	-	-	1x13mm, 10.8kg/m ² (fire-rated plasterboard)
SHAFT WALL adjacent to dry habitable rooms	14	-	-	-	-	75	-	50mm, 14kg/m ³	28mm steel f/c direct fixed by clips	1x13mm, 9.8kg/m ² water-resistant plasterboard
SERVICES WALL (up to 3.3m height)	15	-	-	-	-	75	-	-	-	NO plasterboard

2 HELIX AAC PANELS

Helix panel material properties have been determined by testing and calculation in accordance with AS 5146 Parts 1 & 2 - Reinforced Autoclaved Aerated Concrete as:

Property		Property	
Panel Thickness	d (mm)	50	75
Panel Width	w (mm)	600	
Panel Length	L (mm)	2200, 2400, 2550, 2700, 2850, 3000	1800, 2200, 2400, 2550, 2700, 2850, 3000, 3300
Panel Edge Profile		Square	
Declared Density Class	Class	500	
Dry Density	ρ dry (kg/m ³)	450-500	
Ambient Density	ρ ambient (kg/m ³)	478-531	
Density for Transport (AS 5146.2, Cl.3.2.7):	ρ trans (kg/m ³)	670-740	
Panel Weight	m ambient (kg/m ²)	23.9-26.5	35.6-39.8
Declared Compressive Strength Class: AAC 2.5	Class	AAC 2.5	AAC 3
Characteristic AAC Compressive Strength	f_{ck} (MPa)	2.7	3.0
Reinforcement Tensile Yield Stress	f_{yk} (MPa)	724	
Reinforcement Characteristic Weld Strength	V_{uk} (kN)	3.91	
Ultimate Strength Bending Capacity	$\emptyset M_k$ (kNm/m)	0.226	0.893
Coefficient of Thermal Expansion	($\times 10^{-6}/^{\circ}\text{C}$)	8×10^{-6}	
Thermal Resistance	R_{50dry} (m ² K/W)	0.431	0.602
Longitudinal Steel Reinforcement	Number (mm)	5 x Ø4.5	5 x Ø4.5
Transverse Steel Reinforcement (depending on panel length)	Number (mm)	6-8 x Ø4.5	6-10 x Ø4.5

3 NATIONAL CONSTRUCTION CODE (NCC) 2022

The NCC is a performance-based code, providing minimum performance levels and prescriptive 'recipes' for certain materials and construction-types. Compliance via a prescriptive 'recipe' described in the deemed-to satisfy clauses is called a Deemed-to-Satisfy Solution, otherwise performance must be evaluated by testing and engineering as a Performance Solution.

Intertenancy Walls and Party Walls are typically required to meet minimum performance requirements for; structure; fire; acoustics; and energy efficiency. Details of compliance are outlined below.

3.1 Structural Performance, B1D4(b)(ii) & H1D7(4)(a)

Helix 50/75mm AAC Intertenancy and Party Wall System panels have been tested in accordance with AS 5146.1, load-bearing Party Walls have been designed in accordance with AS 5146.3.

As referenced in NCC 2022 Volume Two, H1D7(4)(a), performance requirement H1P1 is satisfied for autoclaved aerated concrete if it is designed and constructed in accordance with AS 5146.1.

As referenced in NCC 2022 Volume One, B1D4(b)(ii), structural resistance of materials and forms of construction for autoclaved aerated concrete must be determined in accordance with AS 5146.1 & AS 5146.3.

Helix 50/75mm AAC Intertenancy and Party Wall Systems are designed such that the panels are not intended to carry vertical loads other than their self-weight. Wind pressure actions perpendicular to the surface are resisted by panel strength and fixing requirements as detailed. The steel or timber framing must be designed independently, taking into account internal pressures, and control joints are required at regular intervals to allow for building movement.

Helix 75mm Intertenancy Wall Systems (Variants 5, 6 & 7), Corridor Wall Systems (Variants 8 & 9), Shaft Wall Systems (Wet or Common Variants 10, 11, 12, 13), Shaft Wall Systems (Dry Variant 14) and Services Wall System (Variant 15) are designed to resist Design Ultimate Limit State Wind Pressures up to 0.375kPa.

In all cases, Helix panels shall be temporarily braced to resist construction loads, including wind.

3.2 Fire Safety Performance, C2D2(2) & 9.3.1(1)(a)(i)

Helix 50/75mm Party Wall Systems (Variants 1, 2, 3 & 4) (see Figure 1) have been tested and assessed as having the capacity to maintain an FRL of 60/60/60, 90/90/90 or 120/120/120 as applicable, and meet non-combustible construction requirements in conjunction with steel framing and non-combustible insulation, where:

- Helix panel 50/75mm mechanically fixed to either steel or timber wall framing (by others) using aluminium wall brackets attached only to the top and bottom plates such that there is no continuous construction across the cavity
- The brackets must be angles not smaller than 76mm x 43mm x 50mm in size and fabricated from a minimum of 1.6mm thick Grade 5005 aluminium.
- Fixings (Nails & Screws).
 - To fix aluminium bracket to top and bottom plate:
 - For timber plates, 2/25 x 2.5mm galvanized nails or 2/12-11 x 35mm hex head type 17 screws (Class 3 or 4).
 - For steel plates, 2/10-16 x 16mm wafer head/hex head screws (Class 3 or 4).
 - To fix aluminium bracket to the Helix panel:
 - 2/14-10 Hex Head screws (Class 3 or 4). Screw length shall be 10mm shorter than the panel thickness.
- Wall framing either timber framing 70x45mm MGP10, or light-gauge steel framing (min. 0.55mm BMT) compliant with the relevant framing code.
- R2.0, 70mm, 10.3kg/m³ Glasswool Batt Insulation
- Min. 10mm thickness Standard Grade Plasterboard fixed with stud adhesive, paper tape 6g x 25mm bugle head needle point screws
- Horizontal joints shall be made with either;
 - Continuous steel channel, 76 x 32 x 0.75mm BMT or 76 x 50 x 0.70mm Deflection Track or J-Track, fixed back-to-back with 10-16 x 16mm wafer head screws at 600mm max. ctrs, with 16mm fire rated plasterboard fixed to panel with 10 x 50mm bugle head laminating screws at 400mm max. ctrs. on one side, or

- 100mm wide, 13mm thick, mineral fibre strips with a density of not less than 110kg/m³
- Maximum wall height of 12.0m

has been tested and assessed as having the capacity to maintain an FRL of 60/60/60, 90/90/90 or 120/120/120 as applicable, and meet noncombustible construction requirements in conjunction with steel framing and non-combustible insulation.

Helix 75mm Intertenancy Wall Systems (Variants 5, 6 & 7), Corridor Wall Systems (Variants 8 & 9), Shaft Wall Systems (Wet or Common Variants 10, 11, 12, 13), Shaft Wall Systems (Dry Variant 14) and Services Wall System (Variant 15)

(see Figures 2, 3, 4 & 5), have been tested and assessed as having the capacity to maintain an FRL up to -/90/90 as applicable, and meet non-combustible construction requirements in conjunction with steel framing, and non-combustible insulation, where:

- Helix panel 75mm,
- mechanically fixed to steel slotted angle brackets using 14-10 x 65mm hex head Type 17 screws, as detailed,
- sealed with AAC adhesive mortar, fire-rated sealant and backing rod, as detailed,

with

- Concrete slab above and below (as specified),
- Steel wall framing or steel battens (minimum 28mm thickness), as detailed
- Plasterboard wall and ceiling linings (minimum 13mm thickness, as detailed)
- Non-combustible glasswool insulation (minimum 75mm, 11kg/m³ or 50mm, 14kg/m³), as detailed have been tested and assessed as having the capacity to maintain an FRL up to -/90/90 as applicable, and meet non-combustible construction requirements in conjunction with steel framing, and non-combustible insulation.

3.3 Non Combustible, C2D10

Non-Combustible: C2D10(5)(e), Autoclaved aerated concrete, including mortar are non-combustible and may be used wherever a non-combustible material is required.

3.4 Fire Hazard Properties, C2D11

As a concrete product, C2D11(1) requirements for Group Number, SMOGRARC, ASEA, Spread-of-Flame and Smoke-Developed Indices, "...do not apply..." to Helix panel [per C2D11(3)].

3.5 Acoustic Performance, F7P2, F7P4, H4P6(2) & 10.7.1

Helix 50/75mm Party Wall Systems (1, 2, 3 & 4) & Intertenancy Wall Systems (5, 6 & 7) (see Figures 1 & 2) with:

- Timber or steel framing configurations achieve airborne sound insulation performance, calculated as weighted sound reduction indices with spectrum adaptation terms of:
- R_w (dB) from 64 to 65; and,
- R_w+C_{tr} (dB) from 50 to 51.

Helix 50/75mm Party Wall Systems achieves NCC Volume One, F7P2 & F7P4 for;

- R_w+C_{tr} (dB) not less than 50; and,
- discontinuous construction when constructed with a minimum 20mm cavity between leaves and there is no mechanical linkage between leaves except at the periphery, where;
- intermediate brackets are not required for walls up to 3m in height; and
- maximum intermediate bracket vertical spacings of 3m for walls up to 12m in height.

System	Helix Panel Thickness (mm)	Plasterboard	Min. Stud Depth (mm)	Frame-Panel Gap (mm)	R _w (dB)	R _w +C _{tr} (dB)
1. Party Wall	50	1 x 13mm fire-rated/ acoustic/impact-resistant 10.5kg/m ²	70	20	64	50
2. Party Wall	50	1 x 13mm standard, 8.4kg/m ²	70	40	64	50
3. Party Wall	50	1 x 13mm standard, 8.4kg/m ²	90	20	64	50
4. Party Wall	75	1 x 13mm standard, 8.4kg/m ²	70	20	64	50
5. Intertenancy Wall	75	1 x 13mm standard, 8.4kg/m ²	64	20	64	50
6. Intertenancy Wall	75	Side A: 1 x 13mm standard, 8.4kg/m ² , Side B: 1 x 13mm water-resistant, 9.8kg/m ²	64	20	64	50
7. Intertenancy Wall	75	1 x 13mm water-resistant, 9.8kg/m ²	64	20	65	51

Helix 50/75mm AAC Party Wall Systems (x4) & Intertenancy Wall Systems (x3) achieve NCC Volume Two, 10.7.1(1) requirement for;

- a separating wall to have an R_w+C_{tr} (airborne) not less than 50; and
- for discontinuous construction when constructed with a minimum 20mm cavity between leaves and there is no mechanical linkage between leaves except at the periphery, and
- for Party Wall Systems;
- intermediate brackets are not required for walls up to 3m in height; and
- maximum intermediate bracket vertical spacings of 3m for walls up to 12m in height.

Helix 75mm Corridor Wall Systems, Shaft Wall Systems and Services Wall Systems (see Figures 3, 4 and 5) with configurations as detailed, achieve NCC Volume One, F7P2 & F7P4 airborne sound insulation performance, calculated as weighted sound reduction indices of:

System	Helix Panel Thickness (mm)	Plasterboard	Min. Stud Depth (mm)	Frame-Panel Gap (mm)	R _w (dB)
8. Corridor Wall	75	1 x 13mm standard, 8.4kg/m ²	64	15	54
9. Corridor Wall	75	1 x 13mm water-resistant 9.8kg/m ²	64	15	55
10. Shaft Wall	75	1 x 13mm water-resistant, 9.8kg/m ²	–	–	31
11. Shaft Wall	75	1 x 13mm standard, 8.4kg/m ²	–	–	31
12. Shaft Wall	75	1 x 13mm, 11.1kg/m ² (moisture resistant, fire-rated)	–	–	32
13. Shaft Wall	75	1 x 13mm, 10.8kg/m ² (fire-rated plasterboard)	–	–	31
14. Shaft Wall	75	1 x 13mm, 9.8kg/m ² water-resistant	28mm f/c	–	32
15. Services Wall	75	–	–	–	30

3.6 Thermal Performance, J4D6, H6D2(1) & 13.2.5

Helix 50/75mm AAC Intertenancy and Party Wall Systems incorporating 50mm or 75mm thickness panel, aluminium wall brackets, R2.0m2K/W, and 10mm plasterboard lining achieves the following Total R-values in accordance with AS/NZS 4859.1:2018 which may be used to satisfy the minimum Total R-value requirements of NCC 2022, Volume One J4D6, Volume Two H6D2(1)(b)(i) & Housing Provisions 13.2.5 external wall insulation requirements, where these values are higher, or as input to house energy rating software to achieve an energy rating.

Variant	Stud Framing 450mm (up to 600mm c/c)	Insulation Glasswool	Gap (mm)	Panel	Gap (mm)	Insulation Glasswool	Stud Framing	TOTAL R-VALUE (m2K/W)	
								Winter (Heat flow outwards)	Summer (Heat flow inwards)
1, 2	Timber 70x45	R2.0, 70mm	20-40	50	20-40	R2.0, 70mm	Timber 70x45	4.6	4.4
1, 2	Steel 76x35x0.55	R2.0, 70mm	40	50	40	R2.0, 70mm	Steel 76x35x0.55	3.7	3.5
3	Timber 90x45	R2.0, 70mm	20	50	20	R2.0, 70mm	Timber 90x45,	4.8	4.5
3	Steel 92x35x0.55min.	R2.0, 70mm	20	50	20	R2.0, 70mm	Steel 92x35x0.55	3.7	3.6
4	Timber 70x45	R2.0, 70mm	20	75	20	R2.0, 70mm	Timber 70x45	4.8	4.6
4	Steel 76x35x0.55	R2.0, 70mm	20	75	20	R2.0, 70mm	Steel 76x35x0.55	4.0	3.8

4 SYSTEM COMPONENTS

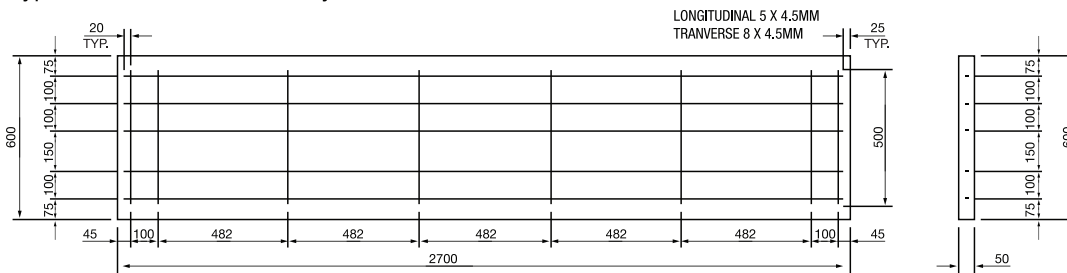
The performance of Helix 50/75mm AAC Intertency and Party Wall Systems rely on the use of the components as listed below. The use of other components will alter the performance of the system and is not approved by Helix.

4.1 Helix Panel, common to all systems

4.1.1 50mm AAC Panel

Product:	Autoclaved aerated concrete panels
Thickness:	50mm
Width:	600mm
Lengths:	2200, 2400, 2550, 2700, 2850, 3000mm
Reinforcement:	Single layer steel mesh, centrally located.
Steel bars:	5 x Ø 4.5mm longitudinal bars and 6-8 x Ø 4.5mm transverse bars depending on panel length.

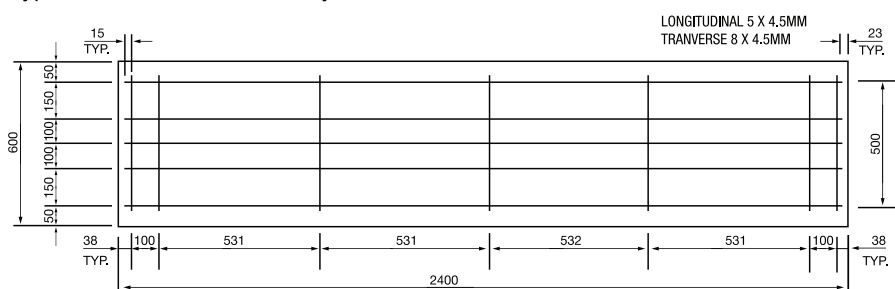
Typical steel reinforcement layout:



4.1.2 75mm AAC Panel

Product:	Autoclaved aerated concrete panels
Thickness:	75mm
Width:	600mm
Lengths:	1800, 2200, 2400, 2550, 2700, 2850, 3000, 3300mm
Reinforcement:	Single layer steel mesh, centrally located.
Steel bars:	5 x Ø 4.5mm longitudinal bars and 6-10 x Ø 4.5mm transverse bars depending on panel length.

Typical steel reinforcement layout:



4.2 Helix 50/75mm Party Wall Systems (Variants 1, 2, 3 & 4) Components

4.2.1 Aluminium Wall Brackets

Helix 50/75mm AAC Party Wall Systems are mechanically fixed to either steel or timber wall framing (by others) using horizontal aluminium wall brackets. The brackets must be angles not smaller than 76mm x 43mm x 50mm in size and fabricated from a minimum of 1.6mm thick Grade 5005 aluminium.

In all cases the supporting structure must be designed accordance to AS 1684 for timber or NASH; or AS/NZS 4600 for steel, with the steel having a minimum thickness of 0.55mm BMT; with recognition of the Helix 50/75mm AAC Party Wall Systems spanning and fixing requirements.

4.2.2 Damp Proof Course

Damp proof course (DPC) must conform with AS/NZS 2904 Section 6 and Table 2 performance criteria.

4.2.3 Flashings

Flashings supplied by others must be designed and installed in general accordance with SA HB 39:2015 – Installation Code for Metal Roofing and Wall Cladding.

4.2.4 Panel Screws

2-off 14–10 Bugle Head or Hex Head Type 17 screw (Class 3 or 4) shall be used to fix Helix panel to Aluminium Wall Brackets. Screw length shall be 10mm shorter than panel thickness.

Screws shall be:

- a) at least Class 3 for moderate and mild exposure environments;
- b) at least Class 4 for severe marine further than 100m from breaking surf, marine and industrial exposure environments; and
- c) Class 4 stainless steel for severe marine exposure environments within 100m of breaking surf.

4.2.5 Bracket Screws

For timber framing, 2-off 25 x 2.5mm galvanized nails or 2-off 12–11 x 35mm hex head type 17 screws (Class 3 or 4). For steel framing, 2-off 10–16 x 16mm wafer head/hex head screws (Class 3 or 4).

Screws shall be:

- a) at least Class 3 for moderate and mild exposure environments;
- b) at least Class 4 for severe marine further than 100m from breaking surf, marine and industrial exposure environments; and
- c) Class 4 stainless steel for severe marine exposure environments within 100m of breaking surf.

4.2.6 Thin Bed Adhesive Mortar

The thin-bed adhesive mortar shall have a characteristic tensile strength equal to or greater than the characteristic tensile strength of the AAC, and be C1E classification in accordance with AS ISO 13007.1.

4.2.7 Mineral Wool – Horizontal Joints

100mm wide, 13mm thick, mineral wool fibre strips with a density of not less than 110kg/m³.

4.2.8 Steel & Plasterboard – Horizontal Joints

Continuous steel channel, 76 x 32 x 0.75mm BMT, or 76 x 50 x 0.70mm Deflection Track or J-Track, fixed back to back with 10-16 x 16mm wafer head screws at 600mm max. c/c, with 16mm Fire rated plasterboard fixed to panel with 10 x 50mm bugle head laminating screw @ 400mm max. c/c on one side of the joint.

4.2.9 Wall Framing, Plasterboard, Insulation and Fire & Acoustic Rated Sealant

Steel framing, plasterboard, insulation and fire & acoustic rated sealant requirements for Helix Party Wall Systems (Variants 1, 2, 3 & 4) shall be designed by others subject to project specific parameters and to achieve project requirements for acoustic, fire and thermal performance, see above and typical details.

4.3 Helix 75mm Intertenancy Wall Systems (Variants 5, 6 & 7), Components

Slotted Angle (75mm x 50mm x 1.15mm BMT)

Slotted Base Angle (50mm x 50mm x 0.75mm BMT)

Steel stud framing system to project specifications (see minimum specification for required acoustic, fire and thermal performance)

Plasterboard as specified (see minimum specification for required acoustic, fire and thermal performance)

Thin Bed Adhesive Mortar

Glasswool Insulation (see minimum specification for required acoustic, fire and thermal performance)

Fasteners / fixings as detailed in Section 7 at the middle of every slot

Concrete Screw Anchor, M8 Hilti HUS3-H or HUS4-H or Ramset AnkaScrew Xtrem, min. 55mm embedment depth, @ max. 600mm c/c & max. 150mm from each end.

Fire and acoustic rated sealant (rated to 90 mins)

Backing Rod open cell PU

4.4 Helix Corridor Wall Systems (Variants 8 & 9), Components

Slotted Angle (75mm x 50mm x 1.15mm BMT)

Slotted Base Angle (50mm x 50mm x 0.75mm BMT)

Steel stud framing system to project specifications (see minimum specification for required acoustic, fire and thermal performance)

Plasterboard as specified (see minimum specification for required acoustic, fire and thermal performance)

Thin Bed Adhesive Mortar

Glasswool Insulation (see minimum specification for required acoustic, fire and thermal performance)

Fasteners / fixings as detailed in Section 7 at the middle of every slot

Concrete Screw Anchor, M8 Hilti HUS3-H or HUS4-H or Ramset AnkaScrew Xtrem, min. 55mm embedment depth, @ max. 600mm c/c & max. 150mm from each end.

Fire and acoustic rated sealant (rated to 90 mins)

Backing Rod open cell PU

4.5 Helix Shaft Wall Systems (WET Variants 10, 11, 12 & 13), Components

Slotted Angle (75mm x 50mm x 1.15mm BMT)

Slotted Base Angle (50mm x 50mm x 0.75mm BMT)

Plasterboard as specified (see minimum specification for required acoustic, fire and thermal performance)

Thin Bed Adhesive Mortar

Fasteners / fixings as detailed in Section 7 at the middle of every slot

Concrete Screw Anchor, M8 Hilti HUS3-H or HUS4-H or Ramset AnkaScrew Xtrem, min. 55mm embedment depth, @ max. 600mm c/c & max. 150mm from each end.

Fire and acoustic rated sealant (rated to 90 mins)

4.6 Helix Shaft Wall Systems (DRY Variant 14), Components

Slotted Angle (75mm x 50mm x 1.15mm BMT)

Slotted Base Angle (50mm x 50mm x 0.75mm BMT)

Furring channel, 28x38x0.50mm BMT

Furring channel mounting clips

Plasterboard as specified (see minimum specification for required acoustic, fire and thermal performance)

Thin Bed Adhesive Mortar

Glasswool Insulation (see minimum specification for required acoustic, fire and thermal performance)

Fasteners / fixings as detailed in Section 7 at the middle of every slot

Concrete Screw Anchor, M8 Hilti HUS3-H or HUS4-H or Ramset AnkaScrew Xtrem, min. 55mm embedment depth, @ max. 600mm c/c & max. 150mm from each end.

Fire and acoustic rated sealant (rated to 90 mins)

Backing Rod open cell PU

4.7 Helix Services Wall System (Variant 15), Components

Slotted Angle (75mm x 50mm x 1.15mm BMT)

Slotted Base Angle (50mm x 50mm x 0.75mm BMT)

Thin Bed Adhesive Mortar

Fasteners / fixings as detailed in Section 7 at the middle of every slot

Concrete Screw Anchor, M8 Hilti HUS3-H or HUS4-H or Ramset AnkaScrew Xtrem, min. 55mm embedment depth, @ max. 600mm c/c & max. 150mm from each end.

Fire and acoustic rated sealant (rated to 90 mins)

Backing Rod open cell PU

5 SPECIFICATIONS

The following specification requirements are outside the scope of this guide:

- a) Building design.
- b) Site supervision and control.
- c) Quality assurance.
- d) Workplace health and safety.
- e) The construction of all other building elements.

The design of the timber or steel structural frame (including all bracing), concrete slabs and footings and other building components are excluded from the scope of the Helix 50/75mm AAC Intertency and Party Wall Systems.

The wall framing supporting AAC wall panels shall be in accordance with AS 1684 for timber; or, NASH or AS/NZS 4600 for steel, where the steel shall have a minimum thickness of 0.55mm BMT. Reinforced concrete slab-on-ground or reinforced concrete footings shall confirm to AS 2870 or AS 3600 requirements.

The Building Designer shall be responsible for the design and correct installation of control joints and articulation joints.

The design, supply and correct installation of doors and all other penetrations are outside the scope of Helix 50/75mm AAC Intertency and Party Wall Systems .

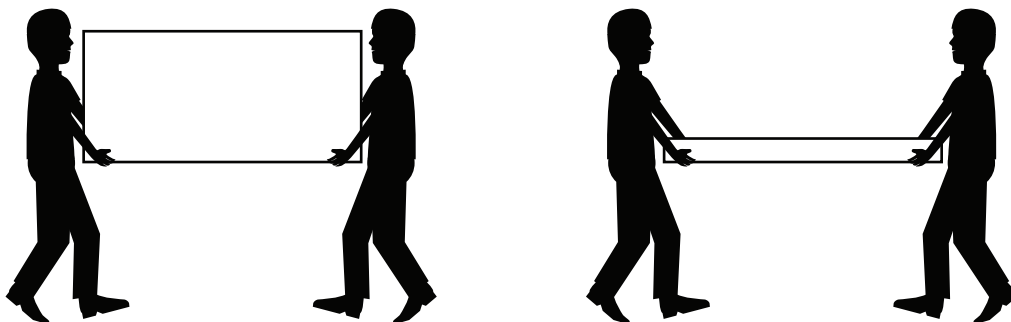
The designer and builder must ensure that the building including all drainage holes and integral flashings in all penetrations will prevent the ingress of rain water and will drain to the outside of the building.

5.1 Storage and Handling

Physical damage – Ensure Helix panel remains protected from damage and surface contamination prior to installation. Weather protection – Ensure the top surface of Helix panel is always covered to prevent the absorption of rainwater.

Do not stack packs of panels on top of each other. Packs must be properly supported on a level surface. Only place packs in areas that have been verified as being able to support their weight.

Manual handling of Helix panel should be kept to a minimum, ensure the panel is only handled “on-edge”.



Always carry Helix panel ‘on-edge’

Never carry Helix panel flat

Cutting of cement based products may cause dust, which contains respirable crystalline silica. When cutting AAC products, wear a P1 or P2 respirator and eye & ear protection, and use dust extraction equipment that complies with AS/NZS 60335.2.69 class M or H requirements. Wet cutting may be mandatory in certain States and/or Territories, confirm with local work safe authority on cutting requirement for AAC products. Always refer to the appropriate Safety Data Sheet for further information.

Steel panel reinforcement exposed during cutting must be re-coated with anti-corrosion protection paint.

6 INSTALLATION

6.1 General

Helix 50/75mm AAC Intertenancy and Party Wall Systems shall only be installed by qualified and experienced tradesmen under the direction of a builder who understand the installation techniques described in this guide, the Australian Standard AS 5146.3, and the NCC 2022(Amdt.1).

In accordance with AS 5146.3, Clause 3.1;

- the structural capacities of Helix 50/75mm AAC Intertenancy and Party Wall Systems as detailed, including fixings, are determined in accordance with AS 5146.1 and AS 5146.2, and the Standards referenced therein; and,
- Helix panels and their fixings are capable of supporting their own self-weight; and,
- Helix panels and their fixings shall be supported within buildings consisting of timber, steel or concrete structural supporting frames, slabs & footings, capable of resisting applicable horizontal and vertical loads.

In accordance with AS 5146.3, Clause 5.1;

- timber, steel or concrete structural supporting frames and slabs, including bracing capable of resisting applicable horizontal and vertical loads, conforming with AS 1684, AS/NZS 4600 or AS 3600 respectively; and,
- reinforced concrete slab-on-ground or reinforced concrete footings conforming with AS 2870 or AS 3600; and,
- the design of the timber or steel structural frame (including all bracing), concrete slabs and footings and other building components are excluded from the scope of Helix 50/75mm AAC Intertenancy and Party Wall Systems.

In accordance with AS 5146.3, Figure 5.4.1(B);

- maximum panel length is 3300mm; and,
- maximum vertical aluminium bracket spacing is 3000mm; and,
- maximum Helix Party Wall Systems height is 12000mm.

The aluminium wall brackets must be fixed to both-sides of Helix panels to the top and bottom plates. Aluminium wall brackets must be located within 50mm of the centreline of every panel. Each bracket must be fixed with 2 fixings into the Helix panel and 2 fixings into the frame. See Typical Details for additional information.

6.2 Control Joints and Articulation Joints

Specific requirements for Control joints and articulation joints will vary from building to building. It is the responsibility of the designer to ensure the Helix 50/75mm AAC Intertenancy and Party Wall Systems are suitable for any application. General guidance for control joints and articulation joints is provided in AS 5146.3 and as follows.

At minimum, vertical control joints or articulation joints shall be built into a wall at the following locations:

- a) Centres not exceeding 6.0m.
- b) For external and intertenancy walls of houses and low-rise multi-residential buildings, at centres not more than the values given in AS 5146.3 Table 2.9.1 for different site soil classes..
- c) At the position where a wall changes height by more than 20%.
- d) At a change in thickness of a wall.
- e) At control joints or construction joints in supporting concrete slabs.
- f) At the junctions of walls constructed of different materials.
- g) At corners, as measured from the inside edge, as follows:
 - i. At the corner of itself.
 - ii. At a maximum of 1.2m one side of a corner, or
 - iii. At a maximum of 2.4m on each side of a corner.

At minimum, horizontal control joints shall be built into a wall at the following locations:

- a) At the position where the Reinforced AAC members continue vertically past a suspended floor.
- b) At the position where the ends of two or more adjacent panels are aligned.

6.3 Installation Steps

6.3.1 Accessories Installation:

Damp-proof Course and Flashings – where required shall be installed in accordance with the Helix 50/75mm AAC Intertency and Party Wall Systems Typical Construction Details, NCC requirements (e.g. NCC 2022 Volume Two, 5.7.4), and as follows.

A surface upon which a sheet of damp-proof barrier or flashing is to be laid shall be as smooth as necessary to prevent puncturing and to prevent keying of supported Reinforced AAC members if they are required to be able to slip on the surface.

Where joints in damp-proof barriers or flashings cannot be avoided, the material shall be lapped or sealed against moisture penetration. The length of lapping shall be not less than 150mm.

Damp-proof barriers and flashings shall not be breached or punctured during construction. They may be pierced and sealed if steel starter bars are required to pass through.

Damp-proof barriers shall be built-in to project from both faces of the wall. On completion of the construction, the projections shall be either cut off flush with the external face of the finished wall or turned down.

Flashings, including over-flashings, shall be built-in with projections that are of a size and orientation to direct the moisture from the Reinforced AAC in the required manner and fixed to the wall frames at not less than 600mm spacing.

Over-flashings shall overlap under-flashings by at least 50mm.

6.3.2 Panel Installation:

1. Holes and chases shall not be made in Reinforced AAC.
2. Reinforced AAC members shall not be cut during construction, except at positions specified in the design documents.
3. Thin bed adhesive shall be applied to the entire edge surface of all joints between Reinforced AAC panels, other than control or articulation joints. The joint shall be 2–3mm wide.
4. Horizontal Joints - Provide horizontal joints at all locations as noted for the specific project. Horizontal control joints are made using either; Mineral Wool; or, Steel and Plasterboard as described in the Typical Details.
5. Vertical Joints – Provide vertical joints, at all locations as noted for the specific project. Vertical control joints are made using Mineral Wool as described in the Typical Details.
6. Helix panels shall be installed to achieve the requirements of Section 7 Construction Details.

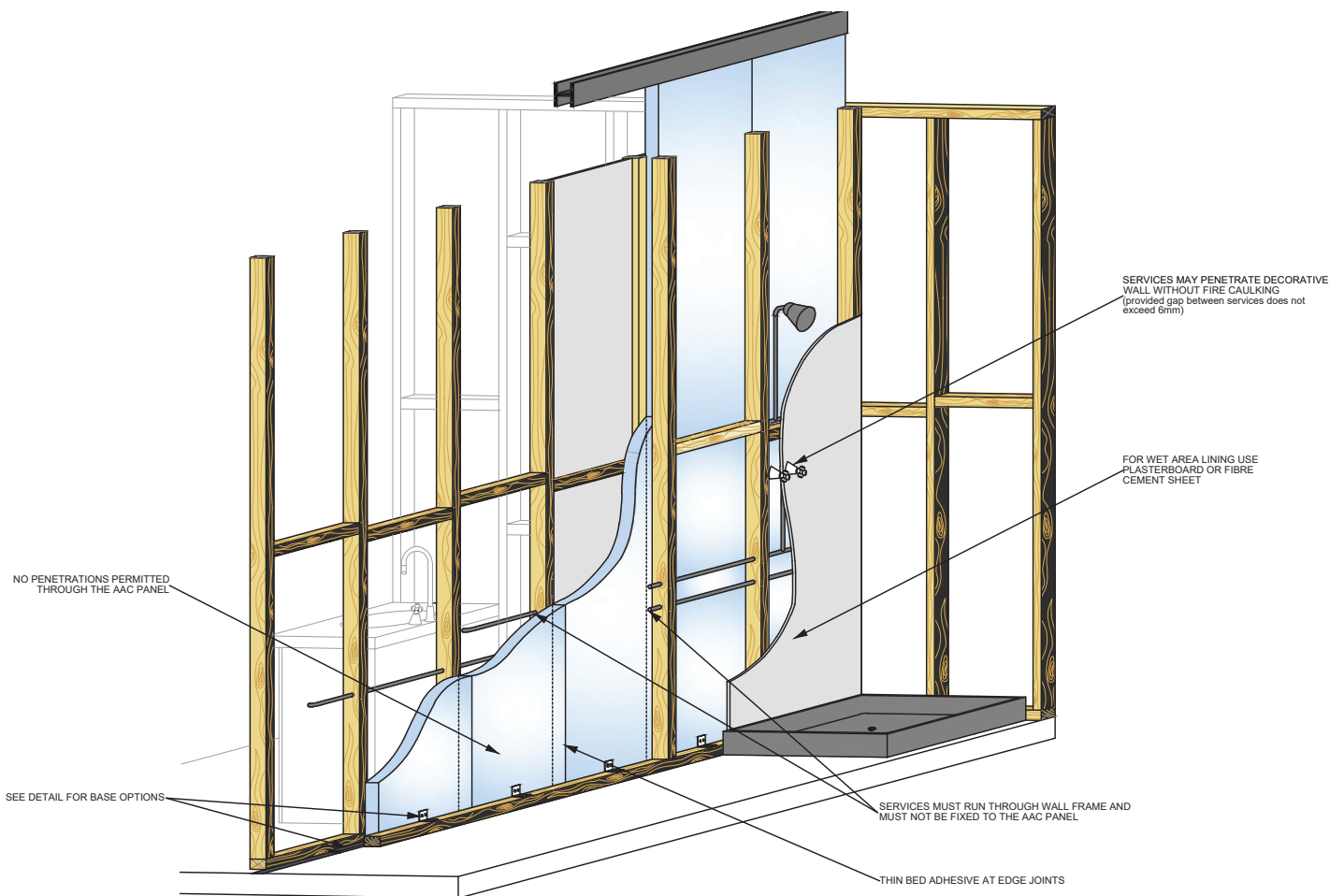
7 CONSTRUCTION DETAILS

Helix 50/75mm AAC Intertency and Party Wall Systems must be installed in strict accordance with this Technical and Installation Manual and comply with all relevant building codes and local government regulations.

These typical construction details are provided as a guide for construction industry professionals. These typical construction details do not constitute a project specific specification and should only be used within the context of project specifications.

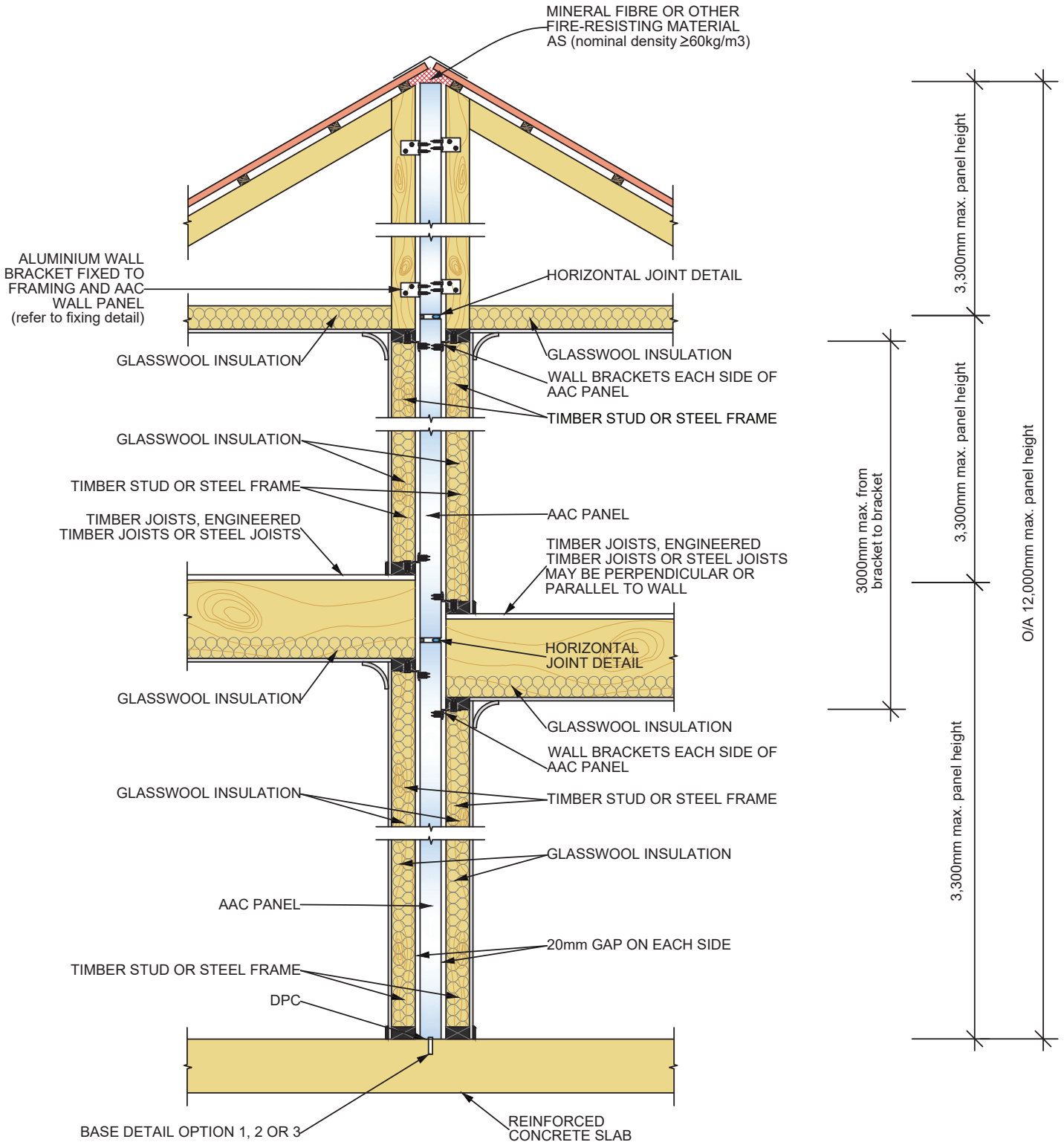
Modifications to these drawings shall not be made without the approval of Helix.

7.1 Typical Details – Helix 50/75mm Party Wall System (Variants 1, 2, 3 & 4)

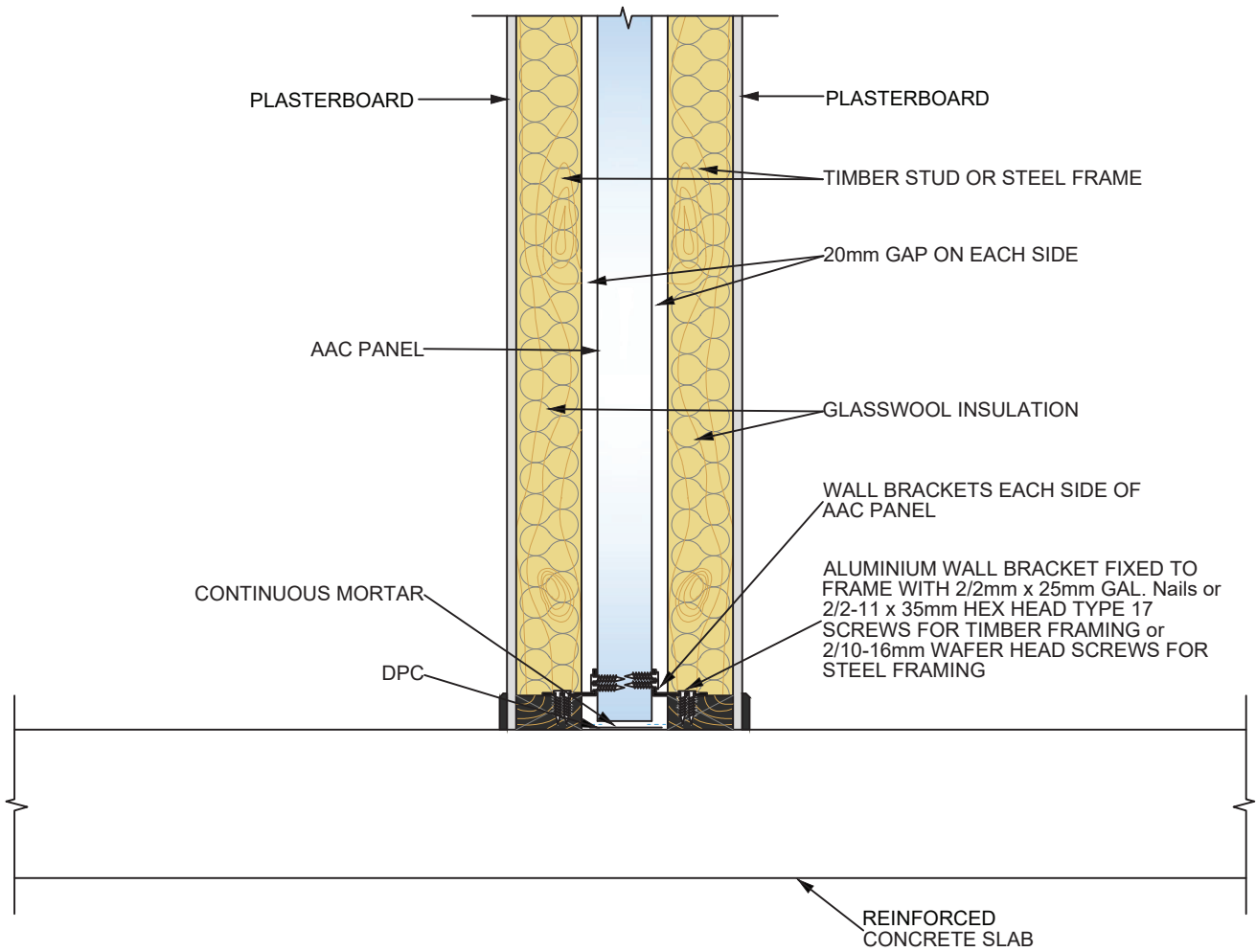


GENERAL LAYOUT FOR VERTICALLY ALIGNED INTERTENCY DISCONTINUOUS WALL SYSTEM

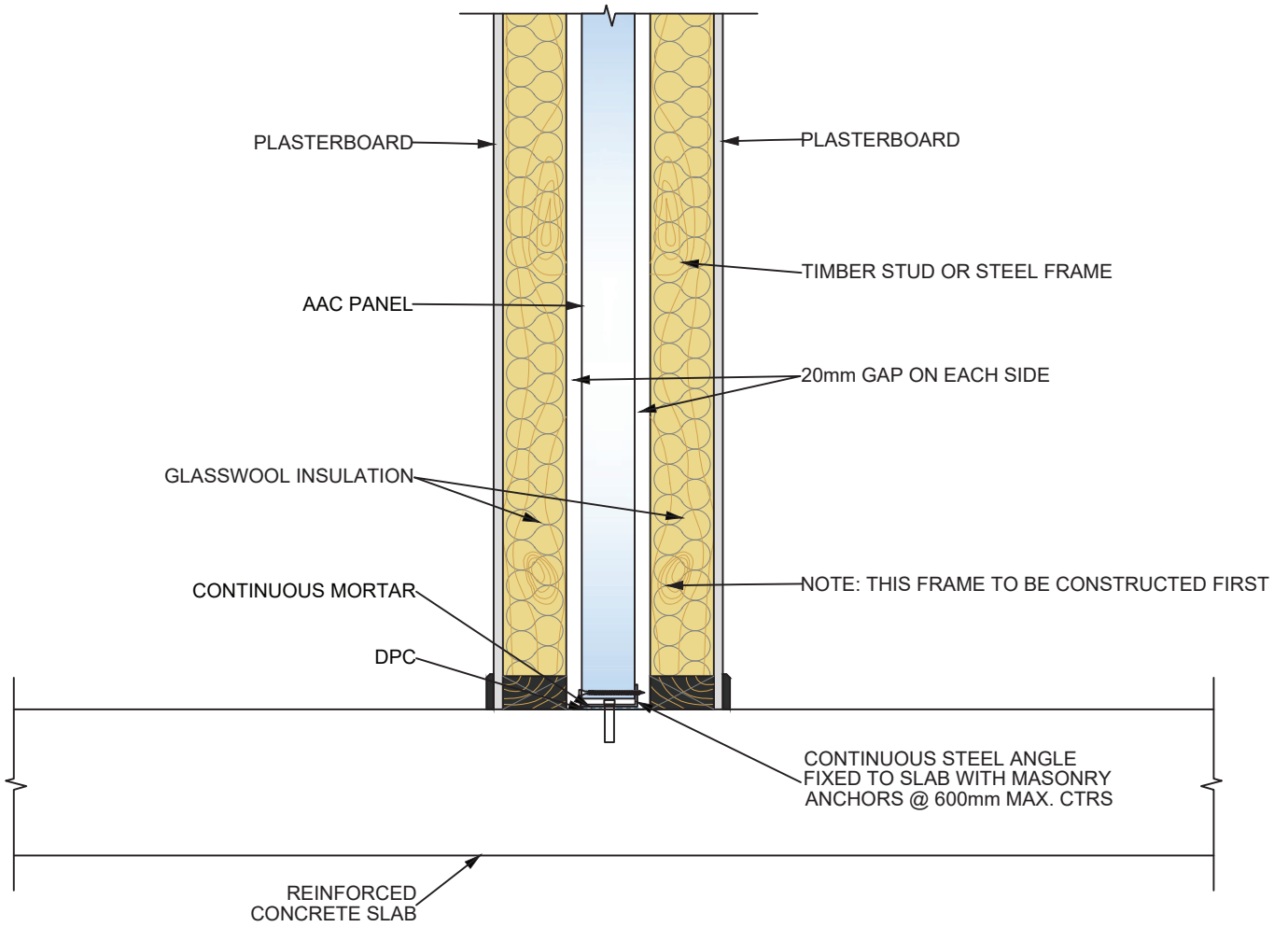
7.1.1 CROSS SECTION OF VERTICALLY ALIGNED REINFORCED AAC INTERTENANCY DISCONTINUOUS WALL SYSTEM



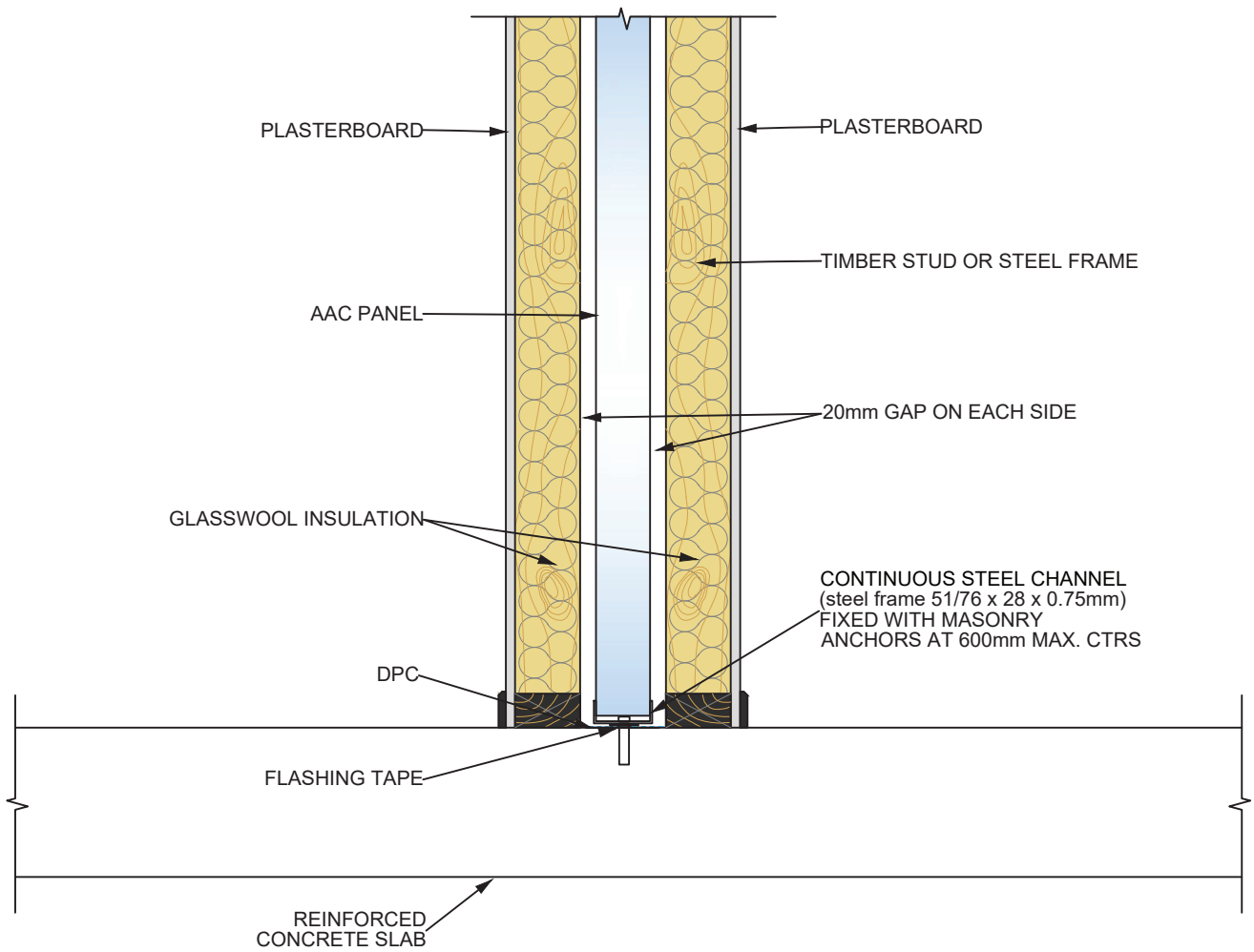
7.1.2 BASE CONNECTION FOR VERTICALLY ALIGNED REINFORCED AAC INTERTENANCY DISCONTINUOUS WALL SYSTEM – OPTION 1



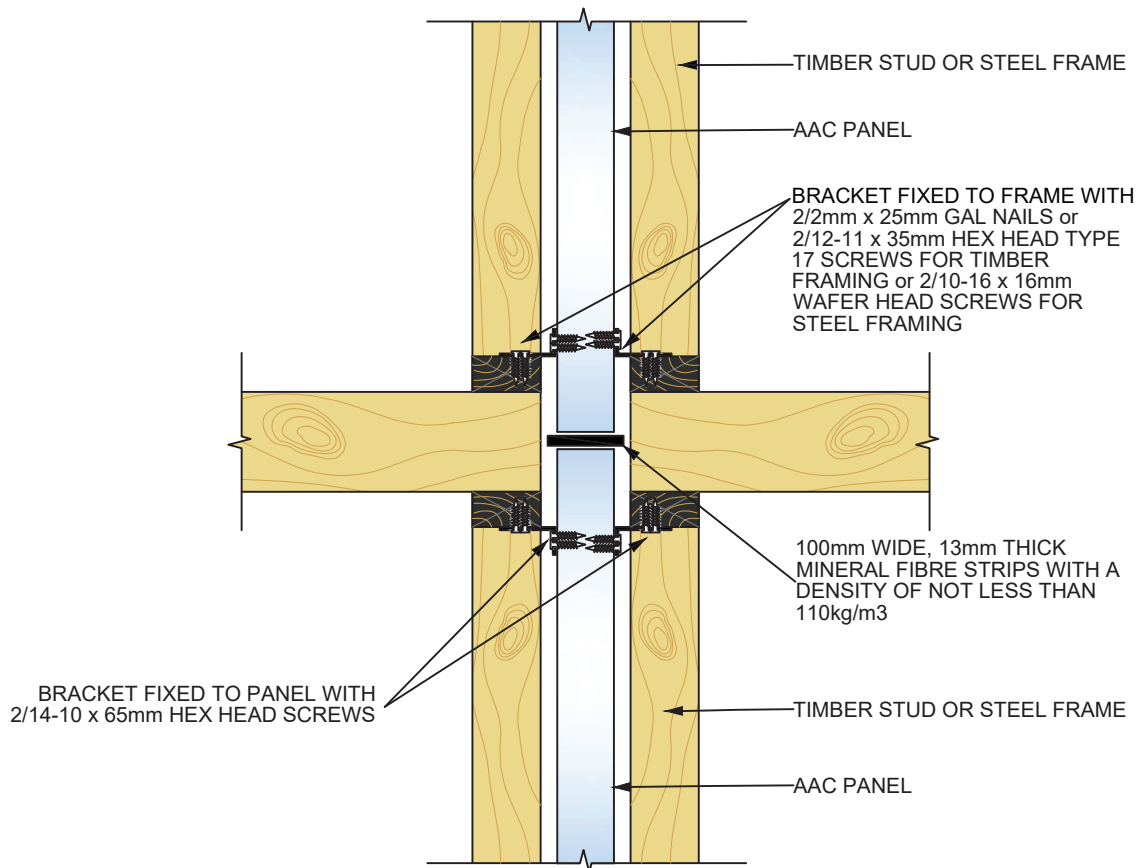
7.1.3 BASE CONNECTION FOR VERTICALLY ALIGNED REINFORCED AAC INTERTENANCY DISCONTINUOUS WALL SYSTEM - OPTION 2



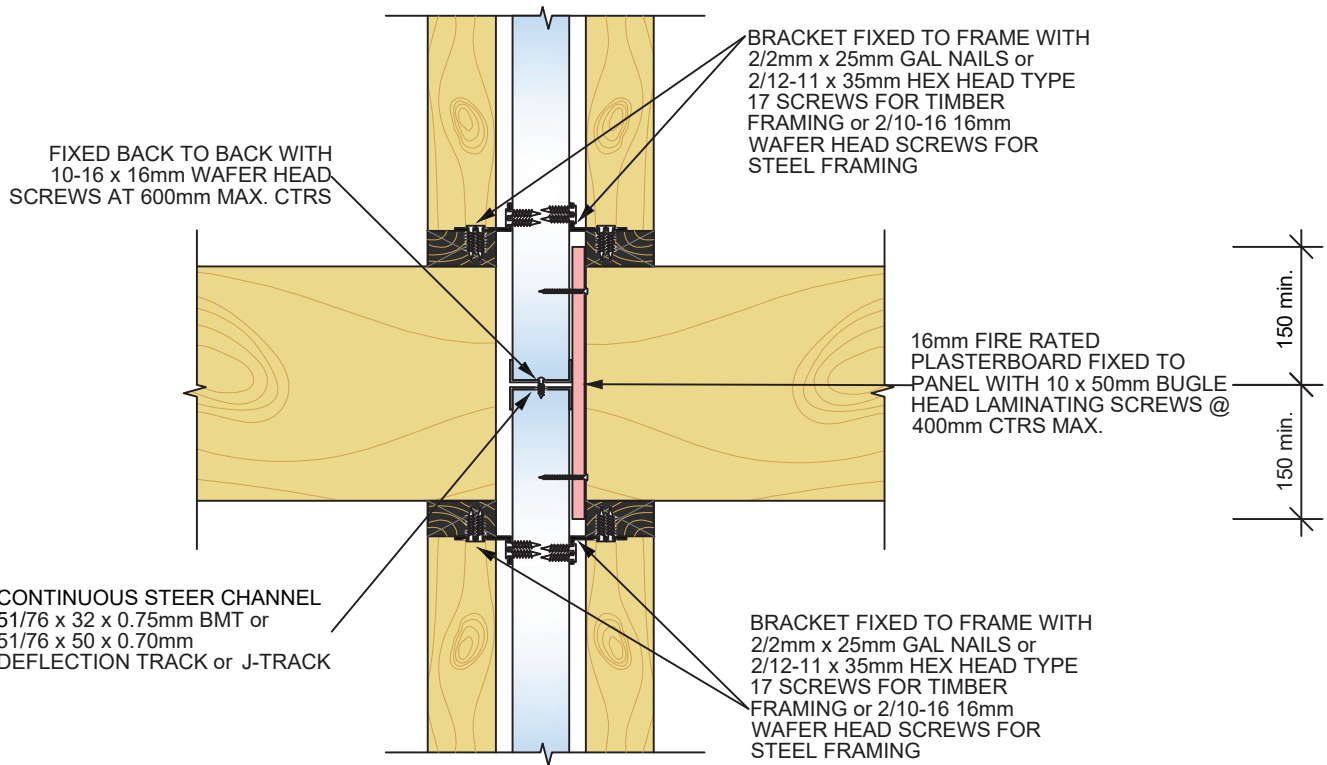
7.1.4 BASE CONNECTION FOR VERTICALLY ALIGNED REINFORCED AAC INTERTENANCY DISCONTINUOUS WALL SYSTEM – OPTION 3



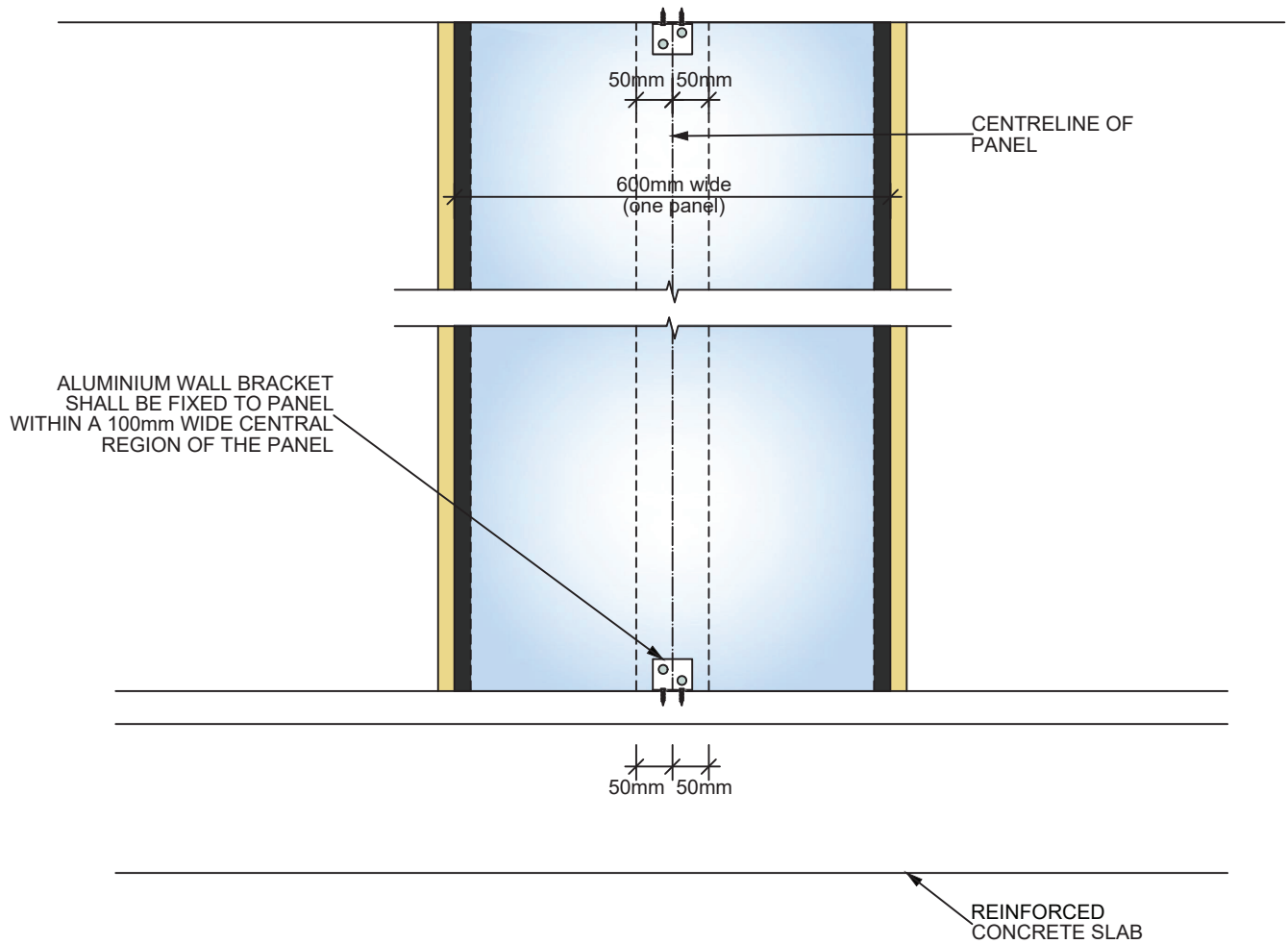
7.1.5 HORIZONTAL JOINT FIXING FOR VERTICALLY ALIGNED REINFORCED AAC INTERTENANCY DISCONTINUOUS WALL SYSTEM – OPTION 1



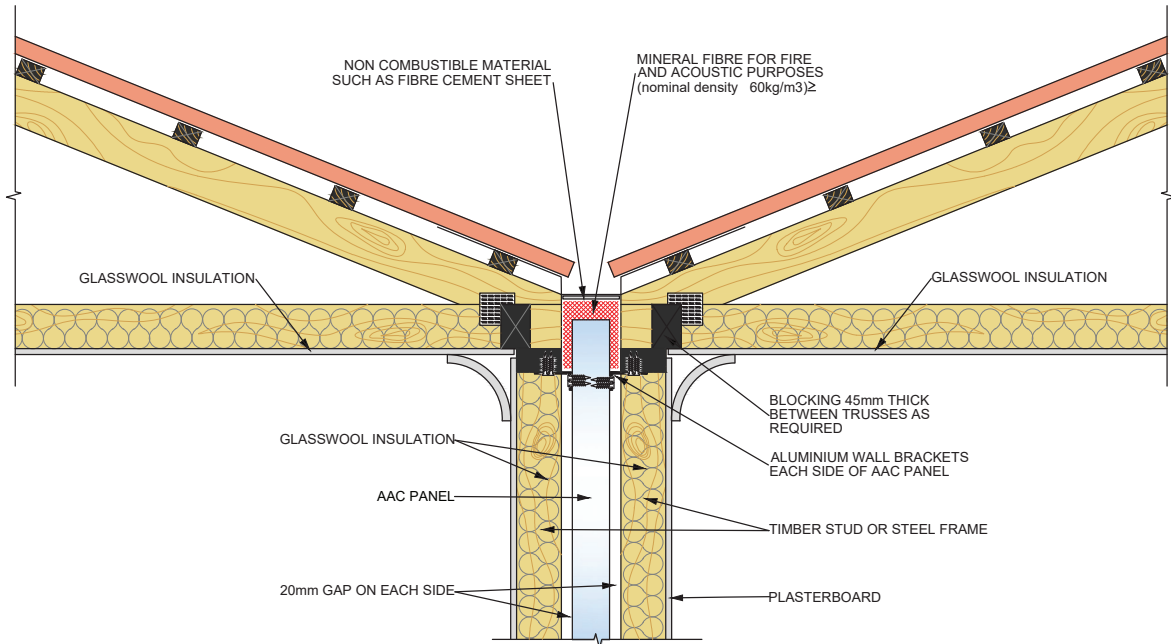
7.1.6 HORIZONTAL JOINT FIXING FOR VERTICALLY ALIGNED REINFORCED AAC INTERTENANCY DISCONTINUOUS WALL SYSTEM – OPTION 2



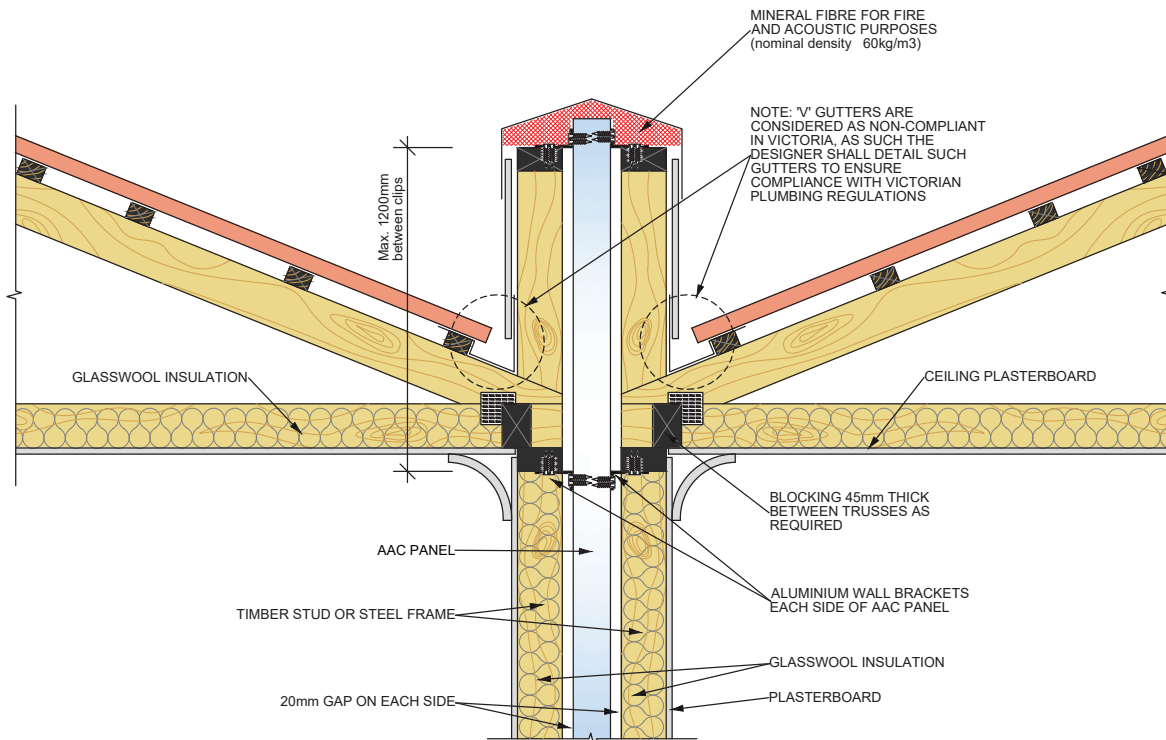
7.1.7 BRACKET FIXING FOR VERTICALLY ALIGNED REINFORCED AAC INTERTENANCY DISCONTINUOUS WALL SYSTEM



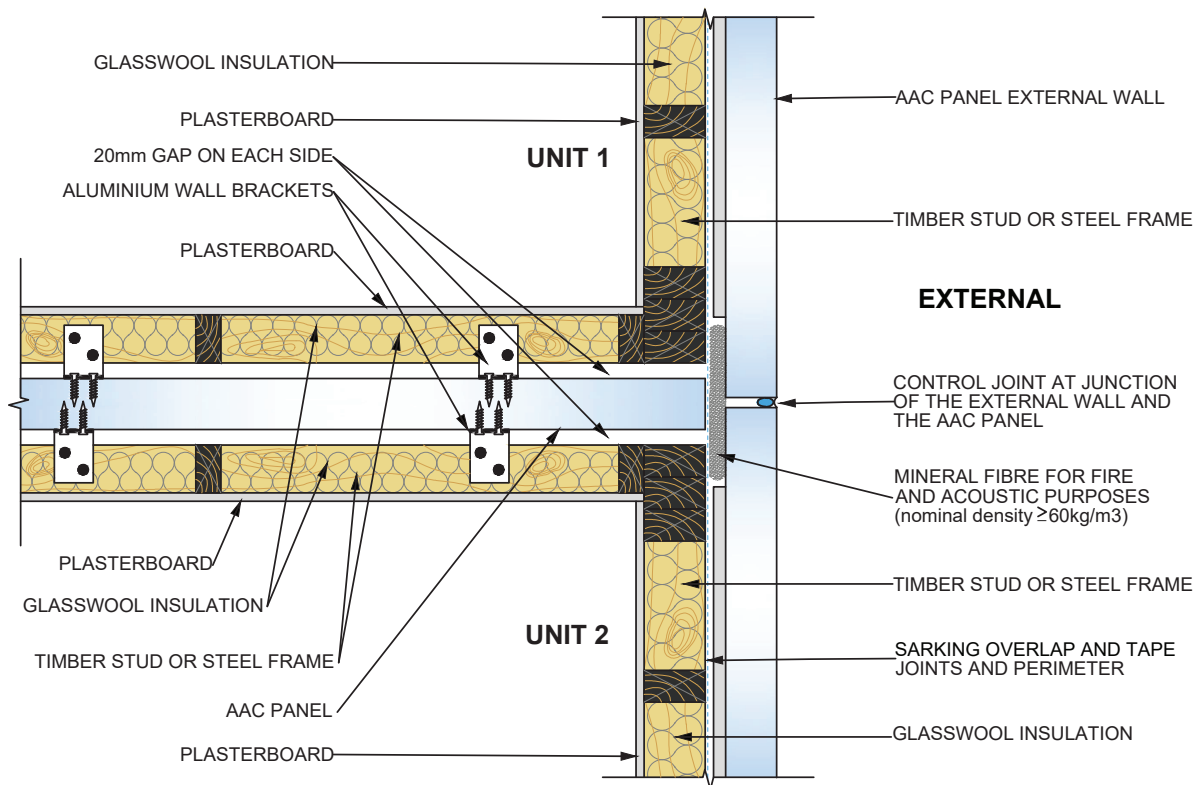
7.1.8 ROOF VALLEY FOR VERTICALLY ALIGNED REINFORCED AAC INTERTENANCY DISCONTINUOUS WALL SYSTEM



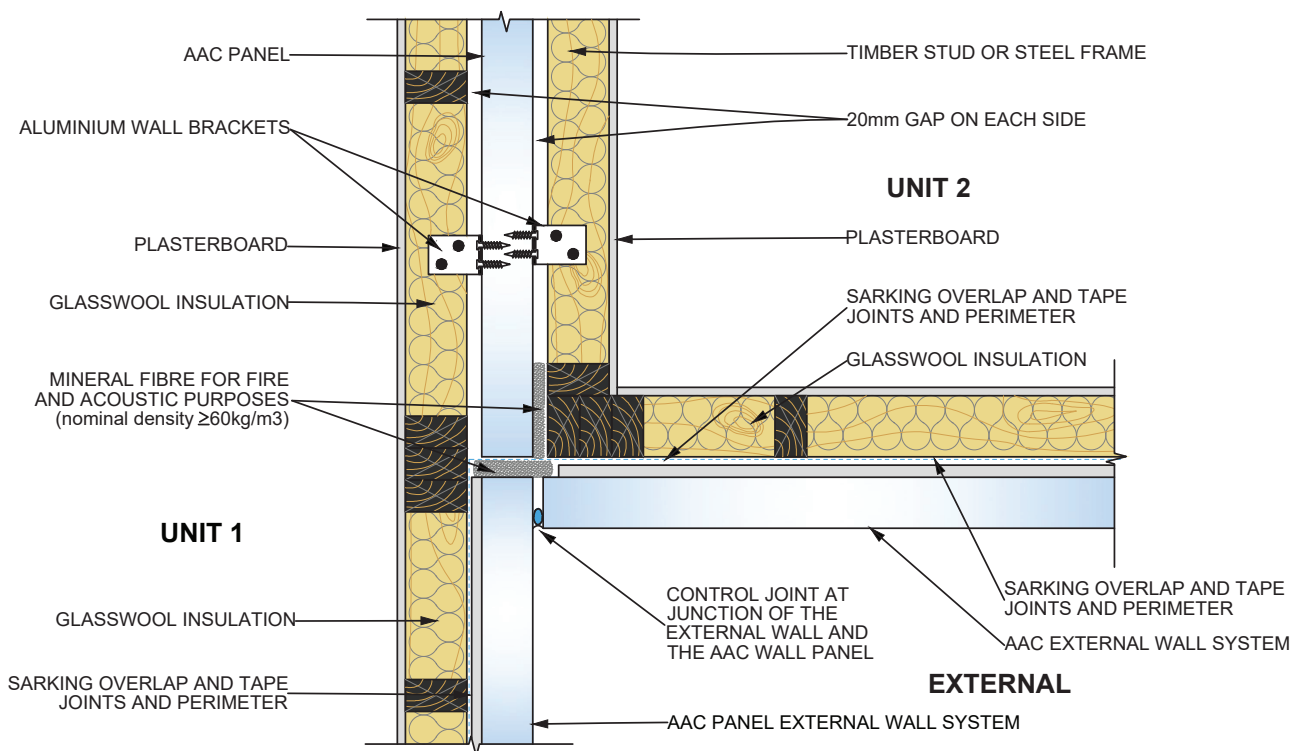
7.1.9 ROOF PARAPET FOR VERTICALLY ALIGNED REINFORCED AAC INTERTENANCY DISCONTINUOUS WALL SYSTEM



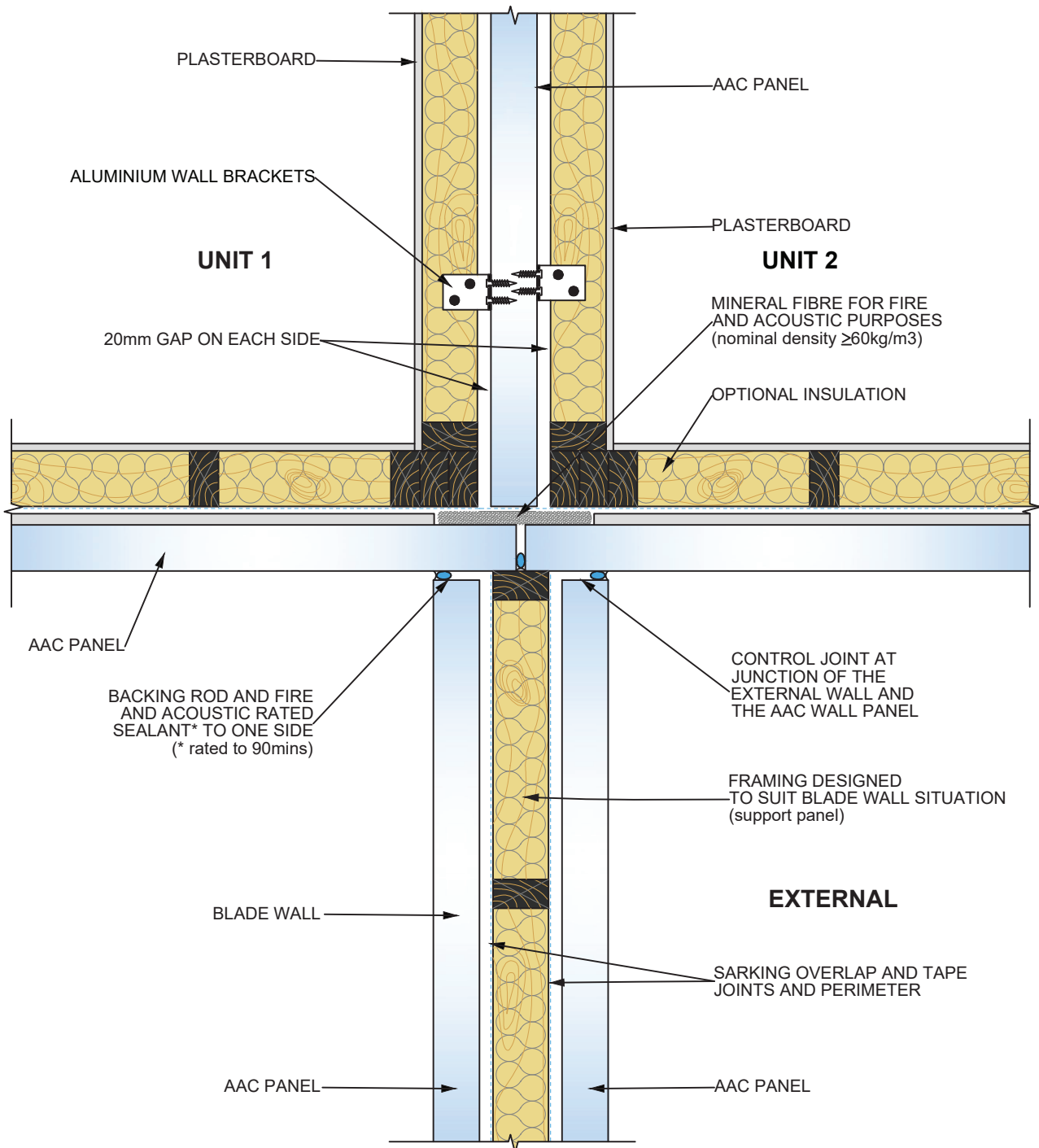
7.1.10 EXTERNAL WALL JUNCTION FOR VERTICALLY ALIGNED REINFORCED AAC INTERTENANCY DISCONTINUOUS WALL SYSTEM



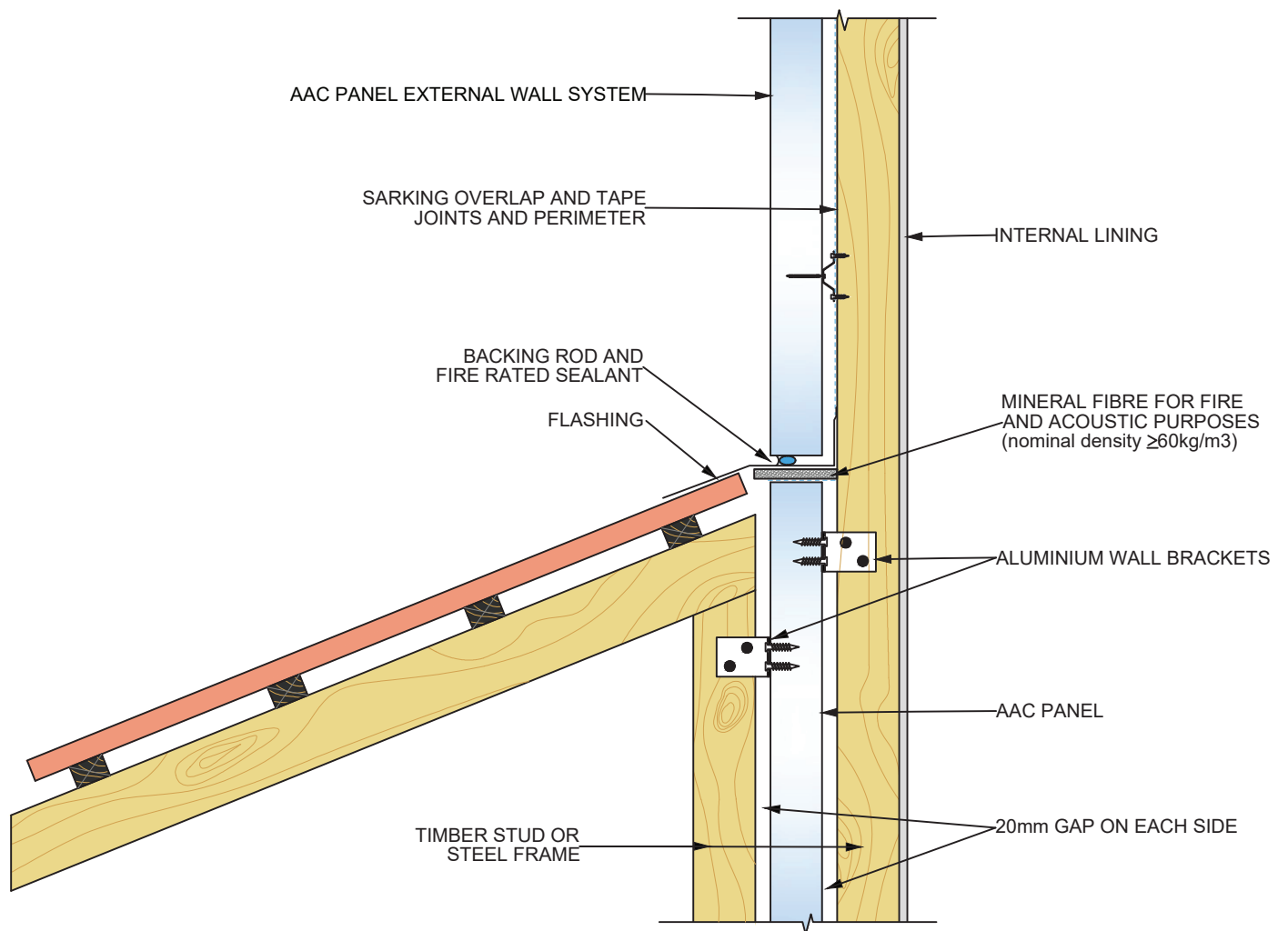
7.1.11 EXTERNAL WALL CORNER FOR VERTICALLY ALIGNED REINFORCED AAC INTERTENANCY DISCONTINUOUS WALL SYSTEM



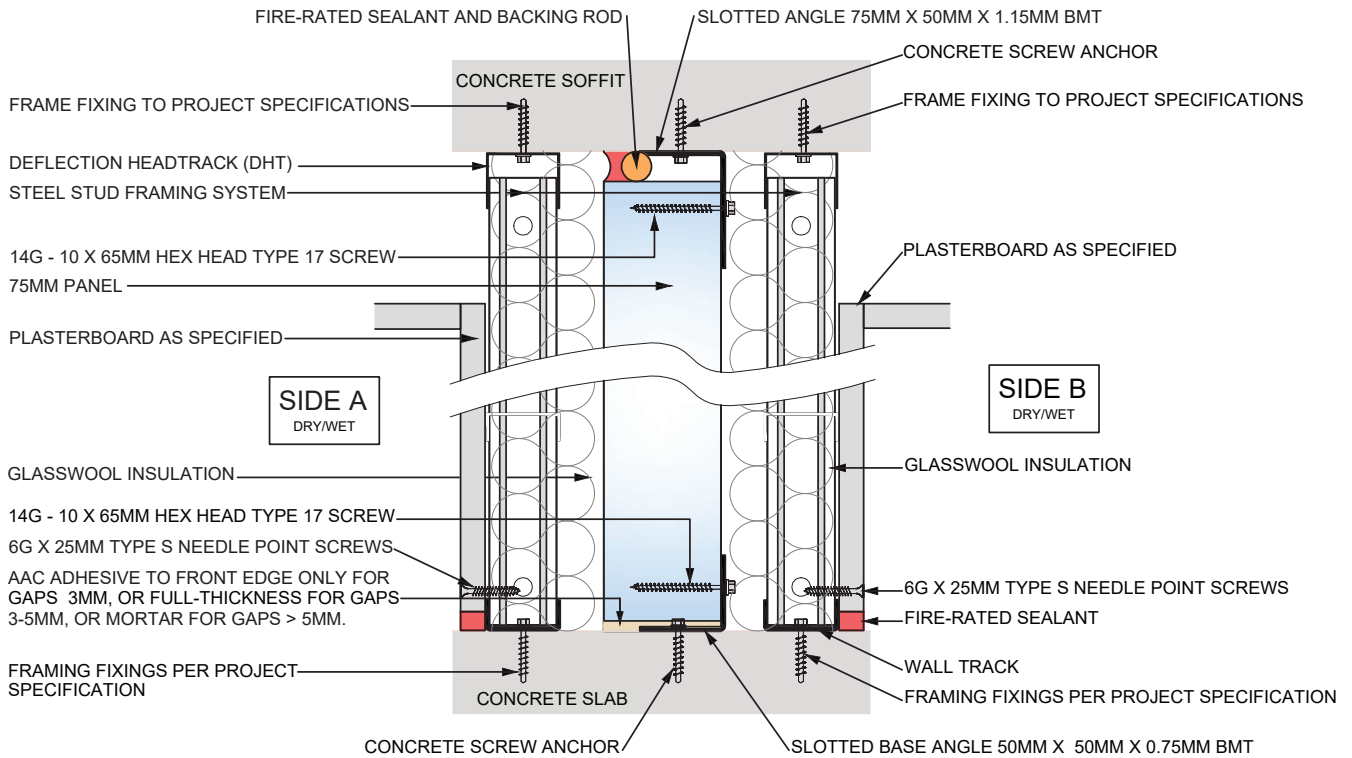
7.1.12 BLADE WALL JUNCTION FOR VERTICALLY ALIGNED REINFORCED AAC INTERTENANCY DISCONTINUOUS WALL SYSTEM



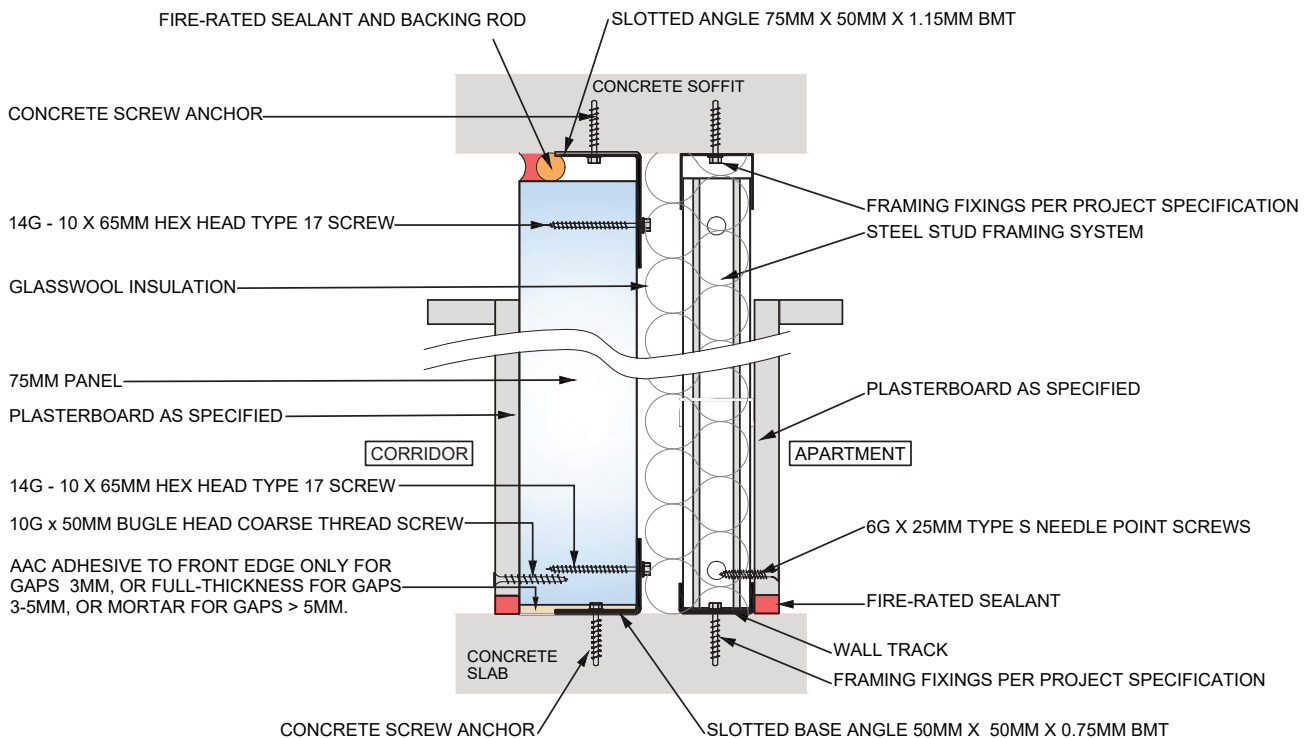
7.1.13 STEP IN ROOF FOR VERTICALLY ALIGNED REINFORCED AAC INTERTENANCY DISCONTINUOUS WALL SYSTEM



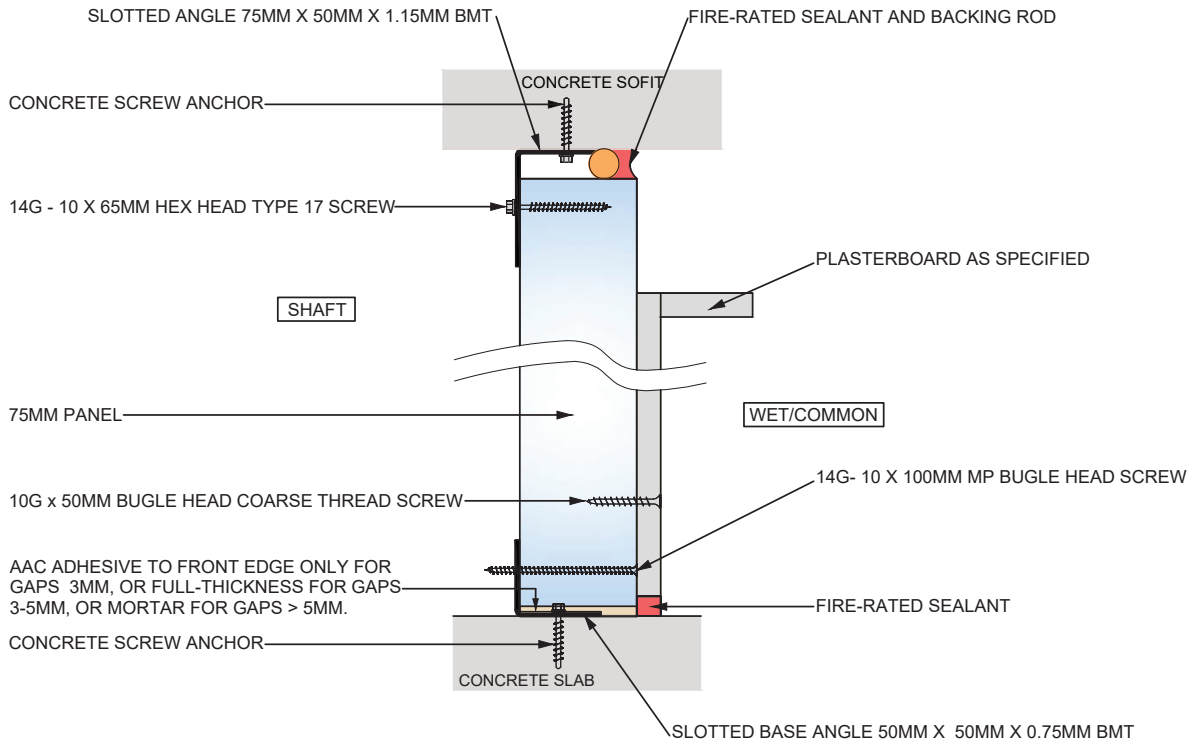
7.2 Helix 75mm Intertency Wall large concealed water services both sides (Variants 5, 6 & 7)



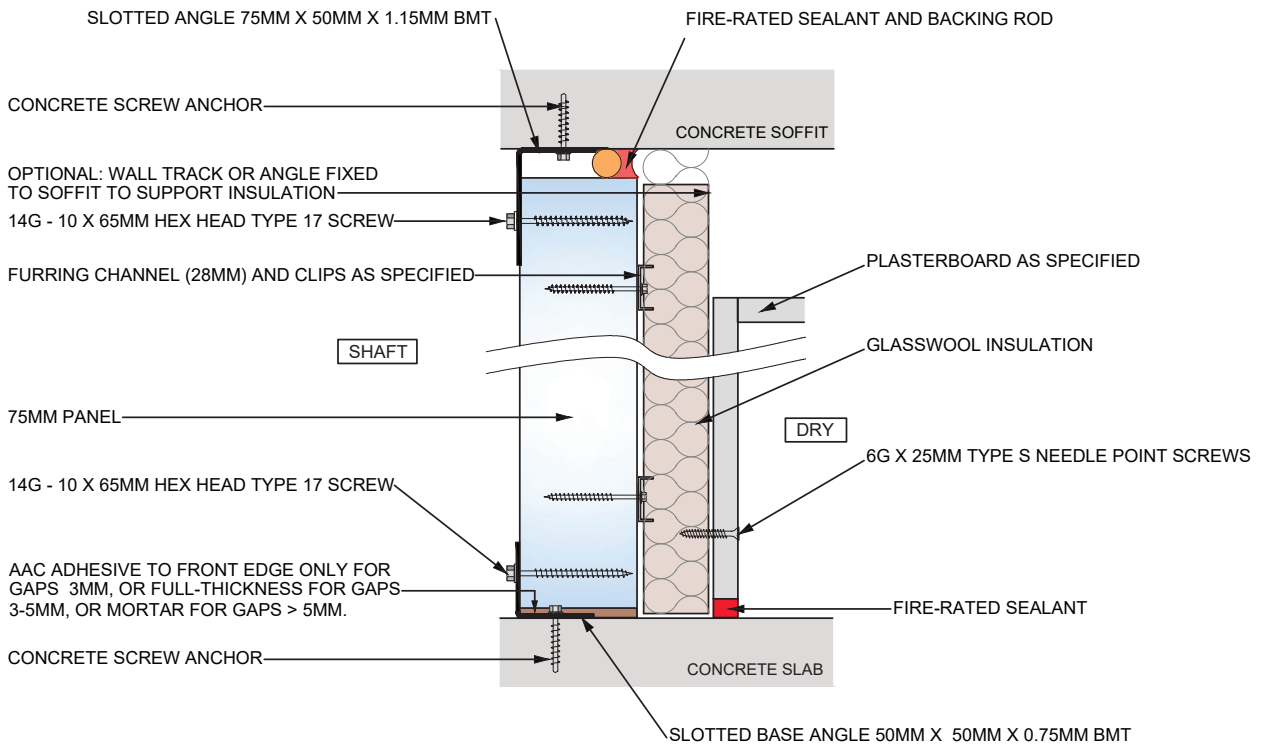
7.3 Helix 75mm Corridor Wall concealed water services one side (Variants 8 & 9)



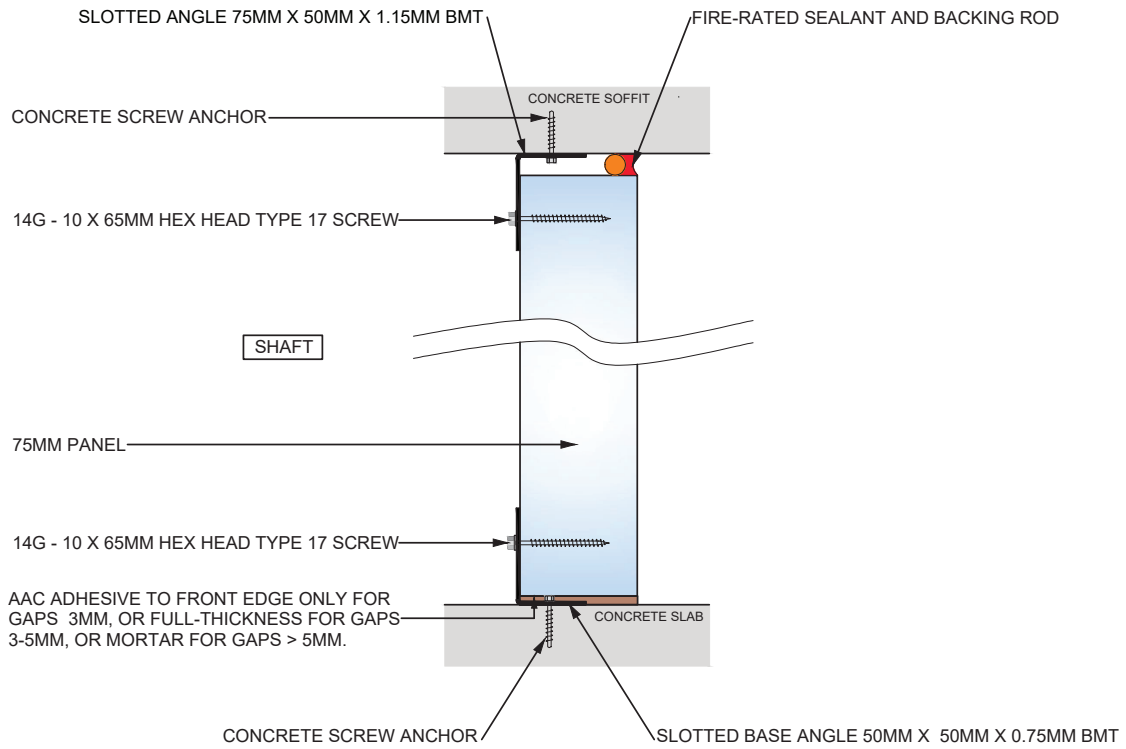
7.4 Helix 75mm Shaft Wall adjacent to wet or common areas (Variants 10, 11, 12 & 13)



7.5 Helix 75mm Shaft Wall adjacent to dry habitable rooms (Variant 14)



7.6 Helix 75mm Services Wall for walls up 3.3 metres high (Variant 15)



8 WARRANTY COVERAGE

Helix warrants that, for a period of twenty (20) years from the date of purchase, its 50mm and 75mm AAC panels will be free from defects caused by faulty manufacturing or materials. Under proper conditions and use, the product will be resistant to cracking, rotting, and termite damage, in accordance with the terms outlined below.

This warranty does not override any statutory rights the customer may have under the Australian Consumer Law or other applicable legislation.

Warranty Conditions

To claim this warranty, the following conditions must be met:

1. Proof of Purchase

The customer must provide reasonable supporting documents, including full payment proof.

2. Timely Notification

Helix must be notified within 12 weeks of the defect being discovered or when it ought to have been discovered, and no later than the expiry of the warranty period.

3. Inspection Opportunity

Helix must be given a reasonable opportunity to inspect the product on-site prior to removal, repair, or replacement. If testing or investigation is required, costs are to be initially borne by the claimant and will be reimbursed if the defect is found to be covered by this warranty.

4. Proper Handling and Installation

The product must be transported, installed, and maintained in accordance with Helix's official technical literature at the time of purchase.

5. Approved Components

All components used in the system must be specified and supplied by Helix.

6. Compliance with Construction Standards

The installation must comply with Helix's specifications, the National Construction Code (NCC), relevant Australian Standards, and applicable laws and regulations.

Exclusions from Warranty

This warranty does not apply to defects or damage resulting from:

1. External Factors: Including but not limited to building movement, corrosion, pollution, mechanical impact, hydrostatic pressure, fire, natural disasters, adverse weather conditions, vandalism, and other uncontrollable events.
2. Improper Construction Practices: Any work done before, during, or after installation that causes damage to the product or system.
3. Incorrect Handling: Damage from failure to follow handling instructions provided by Helix.
4. Third-Party Design Faults: Defects caused or contributed to by the design of the structure, foundations, or frames by third parties.
5. Non-Helix Materials: Any issues caused or contributed to by accessories or materials not supplied by Helix.
6. Coating or Sealant Failure: Cracks or deterioration in coatings or sealants applied over the panels.

Note: It is the purchaser's responsibility to consult with the coating/sealant manufacturer to ensure suitability for AAC substrates and confirm elasticity and waterproofing meet Helix's requirements.

Disclaimer


- This warranty only covers the product itself and does not include consequential or indirect losses.
- Helix does not verify whether its products are solely used in any specific project or whether the installation meets warranty conditions.
- Suitability of the product for a specific application is the responsibility of the purchaser.
- Site visits by Helix do not constitute inspections or installation approvals.

For warranty claims, please contact Helix's customer service team with proof of purchase, relevant photos, and installation documentation.

Information on Helix Panel 50/75mm AAC Intertenancy & Party Wall Systems can be found at: www.helix.net.au

Helix AAC Pty Ltd, 12 Tuscan Court, Thomastown, Vic. 3074



A photograph of a modern multi-story apartment building. The building features a mix of light-colored brickwork and white panels. It has several balconies with black metal railings. Some balconies have plants, and one has a person standing on it. The sky is clear and blue.

HELIX Intertenancy and Party Wall Systems
have been created with the most common
building practices in mind to allow the
greatest design flexibility for fire and
acoustic rated internal, common
and separating walls.

Information on Helix Panel 50/75mm AAC
Intertenancy & Party Wall Systems can be
found at:

www.helixsystems.com.au

Helix AAC Pty Ltd, Unit 58/7 Dalton Road,
Thomastown, VIC. 3074