



Ekodeck® Weatherboard Cladding System

Technical Guide



No oiling, staining
or sealing



Tested & built
to last longer



Up to 25-year
warranty

ekodeck.com.au

Ekodeck® Cladding / Weatherboard

TECHNICAL GUIDE

Contents

| | | |
|-----|--|----|
| 1 | Introduction | 3 |
| 2 | Compliance and National Construction Code (NCC) 2022 | 3 |
| 2.1 | Structural Performance, H1P1 & B1P1 | 4 |
| 2.2 | Weatherproofing Performance, H2P2 & F3P1 | 5 |
| 2.3 | Thermal Performance, (J4D6, H6D2(1)(b)(i), 13.2.5) | 6 |
| 3 | System Components | 6 |
| 4 | Materials | 7 |
| 5 | Installation | 7 |
| 5.1 | General Installation | 8 |
| 5.2 | Horizontal Installation | 8 |
| 5.3 | Vertical Installation | 9 |
| 6 | Typical Construction Details | 10 |
| 6.1 | Typical Construction Details - Horizontal (clip-fixed to stud) | 11 |
| 6.2 | Typical Construction Details - Vertical (clip-fixed to steel top-hat batten) | 34 |
| 7 | Manufacturers Warranty | 53 |

Ekodeck® Cladding / Weatherboard

TECHNICAL GUIDE

1 Introduction

Ekodeck Weatherboard Cladding System, developed by Ekologix, is suitable for use on external walls of buildings to satisfy weatherproofing, wind strength and thermal performance requirements.

Ekodeck Weatherboard Cladding System may be installed either horizontally, (clip-fixed to studs) or vertically (clip-fixed to top-hat battens).

This manual is provided for use by designers and builders. It describes system performance, installation and typical construction detailing requirements for use of the Ekodeck Cladding System.

Product selection, and incorporation into the building design, must be made by a person who is conversant with the application and technical aspects of the product, and has ready access to the relevant technical information related to the product use.

Product installation must be carried out by a competent carpenter or other tradesman under the direction of a Builder, both of whom are conversant with the method of product installation and have access to all relevant technical information on product installation.

2 Compliance and National Construction Code (NCC) 2022

Ekodeck Weatherboard Cladding System has been tested, appraised, and certified to the following performance requirements and deemed-to-satisfy provisions of NCC 2022, Volumes One & Two, Building Code of Australia, for Building Classes 1 to 10.

- Structure: (H1P1, B1P1 Structural stability and resistance to actions) Tested and appraised for serviceability and strength under wind actions up to and including AS 4055 Wind Class N4.
- Weatherproofing: (H2P2, F3P1 Weatherproofing) Tested and appraised for resistance to the penetration of water.
- Energy Efficiency: (Vol. One J4D6, Vol. Two H6D2(1)(b)(i), Housing Provisions 13.2.5 External Walls). Ekodeck Weatherboard Cladding System achieves high Total R-values which may be used to satisfy J4D6 & H6D2(1)(b)(i) external wall insulation requirements, or as input to house energy rating software to achieve an energy rating.

Project designers should also consider factors such as:

- Identify relevant performance requirements and project specific needs
- Wind design actions and local wind pressures
- Expansion joint locations; and
- Other NCC, local & state government requirements.

The performance-based National Construction Code (NCC) provides different compliance pathways to enable building construction to achieve required performance levels. NCC Compliance may be demonstrated as either a Deemed-to-Satisfy Solution, or as a Performance Solution.

Few external wall cladding systems are listed as a Deemed-to-Satisfy solution.

(E.g. For weatherproofing performance, systems are limited to those referenced in ABCB Housing Provisions Part 7.5 (as referenced by NCC 2022 Volume Two, Section H2D6(4) & H1D7(4)(b)), and NCC 2022 Volume One Section F3D5.) External wall cladding systems not explicitly described as part of these deemed-to satisfy provisions can only demonstrate compliance as a Performance Solution.

Depending on project specific requirements, external walls of buildings may be required to comply with performance requirements for structure, fire, weatherproofing, dampness, bushfire, condensation and energy efficiency.

Details of compliance of the Ekodeck Cladding System for structure (wind strength), weatherproofing and energy efficiency are outlined below.

Ekodeck® Cladding / Weatherboard

TECHNICAL GUIDE

2.1 Structural Performance, H1P1 & B1P1

Ekodeck Cladding System has been designed and tested for use in AS 4055 Wind Classifications N1 to N4 (excluding AS 4055 Wind Classifications N5, N6, C1, C2, C3 and C4). This includes AS/NZS 1170.2 Design Ultimate Limit State Wind Pressures between $\pm 3.83\text{kPa}$ and Serviceability Limit State Wind Pressures between $+0.82$ to -1.23kPa .

| Ekodeck Weatherboard Support Spacing (mm) | AS 4055 Wind Classification | AS/NZS 1170.2 Max. Design Wind Pressure (kPa) | |
|---|--------------------------------|--|-------------------|
| | | Serviceability (SLS) | Strength (ULS) |
| 450 | N1, N2, N3 & N4 | $+0.82 / -1.23$ | 3.83 |
| 600 | N1, N2 & N3 | | 2.87 |

The design wind loads for any particular building are site specific and must be determined by the design professional responsible for the project.

General requirements / limitations include recognition that Ekodeck Weatherboard Cladding System:

- is not intended to act as wall bracing. Resistance to the design racking loads must be accommodated by other means prior to installation of the wall wrap.
- is not load-bearing and control joints are required at regular intervals to allow for building movement.
- shall be fixed to framing at a maximum 600mm spacing.

Note: To achieve Wind Classification in accordance with AS 4055, Wind Loads for Housing, a house shall;

- have a maximum distance of 6.0m from ground level to the underside of eaves; and,
- have a maximum distance from ground level to the highest point of the roof (not including chimneys) of 8.5m; and,
- have a maximum width (including roofed verandas, but excluding eaves) of 16.0m, and the maximum length shall not exceed five times the width; and,
- not have a roof pitch greater than 35 degrees.

Houses that do not meet these requirements shall be designed to resist wind pressures determined in accordance with AS/NZS 1170.2.

Ekodeck® Cladding / Weatherboard

TECHNICAL GUIDE

2.2 Weatherproofing Performance, H2P2 & F3P1

Ekodeck Cladding System complies with the NCC performance requirements for weatherproofing confirmed based on testing in accordance with the NCC weatherproofing verification methods H2V1 & F3V1.

Weatherproofing performance has been verified for external walls with;

- Serviceability Limit State (SLS) design wind pressures up to AS 4055, Wind Classification N4 (equivalent to AS/NZS 1170.2 design SLS pressures of +0.82 kPa to -1.23 kPa); and
- Windows that comply with AS 2047-Windows and external glazed doors in buildings; and
- Has a Risk Score of 20 or less determined in accordance with NCC 2022, Volume Two, Table H2V1a & Volume One Table F3V1a-Risk factors and scores, as follows:

| Risk Factor | Category | Risk severity | Score |
|------------------------------|--|---------------|-------|
| Wind region | Region A0-5 (AS/NZS 1170.2) | Low to medium | 0 |
| | Region B1-2 (AS/NZS 1170.2) | | |
| | Region C (AS/NZS 1170.2) | High | 1 |
| | Region D (AS/NZS 1170.2) | Very high | 2 |
| Number of storeys | One storey | Low | 0 |
| | Two storeys in part | Medium | 1 |
| | Two storey | High | 2 |
| | More than two storeys | Very high | 4 |
| Roof/wall junctions | Roof-to-wall junctions fully protected | Low | 0 |
| | Roof-to-wall junctions partially exposed | Medium | 1 |
| | Roof-to-wall junctions fully exposed | High | 3 |
| | Roof elements finishing within the boundaries formed by the external walls | Very high | 5 |
| Eaves width | Greater than 600mm for single storey | Low | 0 |
| | 451-600mm for single storey; or | Medium | 1 |
| | Greater than 600mm for two storey | | |
| | 101-450mm for single storey; or | High | 2 |
| | 451-600mm for two storey; or | | |
| | Greater than 600mm for above two storey | Very high | 5 |
| | 0-100mm for single storey; or | | |
| | 0-450mm for two storey; or | | |
| Envelope complexity | Less than 600mm for above two storey | | |
| | Simple shape with single cladding type | Low | 0 |
| | Complex shape with no more than two cladding types | Medium | 1 |
| | Complex shape with more than two cladding types | High | 3 |
| Decks, porches and balconies | As for high risk but with fully exposed roof-to-wall junctions | Very high | 6 |
| | None | Low | 0 |
| | Timber slat deck or porch at ground level | | |
| | Fully covered in plan view by roof | Medium | 2 |
| | Timber slat deck attached at first or second floor level | | |
| | Balcony exposed in plan view at first floor level | High | 4 |
| | Balcony cantilevered at first floor level | | |
| | Balcony exposed in plan view at second floor level or above | Very high | 6 |
| | Balcony cantilevered at second floor level or above | | |

(Credit: The National Construction Code Series 2022© as released by the Australian Building Board on behalf of the Commonwealth of Australia. <http://creativecommons.org/licenses/by-nc-nd/4.0/legal-code>)

Ekodeck® Cladding / Weatherboard

TECHNICAL GUIDE

2.3 Thermal Performance, (J4D6, H6D2(1)(b)(i), 13.2.5)

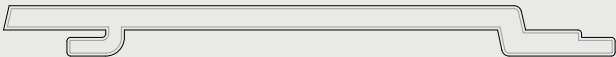
Ekodeck Cladding Systems incorporating vertical or horizontal panels, breathable wall wrap and 10mm plasterboard lining achieve the following Total R-values in accordance with AS/NZS 4859.1:2018.

These Total R-values may either; satisfy the minimum requirements of NCC 2022, Volume One J4D6, Volume Two H6D2(1)(b)(i) & Housing Provisions 13.2.5 external wall insulation requirements; or, may be used as inputs to house energy rating software to achieve an energy rating.

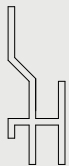
| Ekodeck Cladding System (with 90mm R2.5 batts) | | Total R-value (m².K/W) | |
|---|--|--------------------------------|-------------------------------|
| | | Winter (Heat flow outwards) | Summer (Heat flow inwards) |
| Horizontal (clip-fixed to stud) | Timber Frame | 2.45 | 2.32 |
| | Steel Frame (with R0.2 thermal break) | 1.97 | 1.89 |
| Vertical (clip-fixed to top-hat batten) | Timber Frame | 2.65 | 2.49 |
| | Steel Frame | 2.00 | 1.88 |

3 System Components

Ekodeck Weatherboard Cladding



Ekodeck Weatherboard Cladding Clip



Ekodeck Weatherboard Cladding - to - Cladding Clip Assembly



Ekodeck Weatherboard Cladding J-Section



Ekodeck® Cladding / Weatherboard

TECHNICAL GUIDE

4 Materials

The following table present the materials tested and approved for use.

| Description of material | Details of specific material used |
|---|--|
| Wall wrap type | Light Wall Duty, Class 4 VCM (e.g. Bradford Enviroseal ProctorWrap RW)* |
| Wall wrap/flashing tape | Wall wrap compatible tape (e.g. Bradford Enviroseal HighTack Adhesive Tape 60mm or Optiseal OD739 Wrap Sealing Tape 60mm)* |
| Type of adhesive/sealant | Sikaflex - 111 with Sika 206 G+P Primer |
| Steel top-hat batten (vertical system only) | G550, 25mm x 0.55BMT Top Hat Batten* |
| Screw to fasten cladding clip to timber stud | 7g x 35mm exterior use* |
| Screw to fasten cladding clip to steel stud/top-hat | Buildex 10-16 Smooth Top Teks* |

*or approved equivalent

No component substitutions permitted on any design unless approved equivalent. Installation of any non-standard or non-approved Ekodeck Weatherboard Cladding System components will void any product warranty or claims in relation to product performance.

5 Installation

In all cases the Ekodeck Weatherboard Cladding System should only be installed in accordance with this manual. The design, specification, supply and construction of steel or timber wall framing does not form part of the Ekodeck Cladding System.

Ekodeck Cladding System must be installed only by qualified and experienced carpenters or other tradesmen, who are conversant with the installation techniques set out in this Ekodeck Cladding System Technical Manual.

Framing should be constructed in accordance with the relevant requirements of:

- AS 1684.2 Residential Timber Framed Construction - Non-cyclonic areas, or
- NASH Standard Residential and low-rise steel framing, or
- another appropriate standard.

Ekodeck® Cladding / Weatherboard

TECHNICAL GUIDE

5.1 General Installation

- All external surfaces of the frame shall be plumb and parallel.
- Breathable Wall Wrap - Fix over the studs, and cut around penetrations and openings (e.g. doors, windows) in accordance with AS 4200.2:2017.
- Install Flashing Tape to seal the breathable wall wrap at all joins, openings and around the perimeter of the wall frame. Flashing Tape must always be applied in accordance with the manufacturers' instructions including:
 - surfaces are clean and dry
 - pressure is applied to the tape so the adhesive is firm contact with the substrate.
- Flashing Tape is not a mechanical joining device, ensure that the materials being are joined mechanically secured.
- Additional framing shall be provided as required at joins and penetrations.
- All windows, doors, service penetrations & attachments must be fitted before commencing installation. All aspects of the design, supply and correct installation of penetrations, e.g. windows, doors, are outside the scope of the Ekodeck Weatherboard Cladding System.
- The placement of expansion joints is the responsibility of the designer to ensure they are sufficient to accommodate any project specific movement. Good building practice typically requires expansion joints at each floor level and at all joints between different building construction materials. Don't board over horizontal control joints for the structure.
- The designer and builder must ensure that the building including all drainage paths and flashings will prevent the ingress of rain water behind the panels and will drain to the outside of the building.
- All General Construction and flashing practices undertaken after installation of the Ekodeck Weatherboard Cladding System must maintain water tightness.
- Ensure to pre-drill whenever fastening through the Ekodeck Weatherboard or the J-Trim.

5.2 Horizontal Installation

- Maximum centre-to-centre spacing between studs is 600 mm.
- When using J-Trim horizontally at the base 10mm holes are required to be drilled into J Trim every 450mm plus the LHS and RHS corners to provide adequate drainage.
- When making a vertical join, ensure the both Ekologix J-Sections are fixed directly to a stud.
- When working around windows, doors or fixtures, ensure Ekologix J-Sections are installed around the perimeter of the opening/penetration/service.
- Allow a gap between Ekologix J-sections and the perimeter of any opening for the application of sealant.
- Screw fix all Ekologix Clips to the studs. Screws must penetrate minimum 25mm into timber framing, or minimum 3-full-threads into steel framing.
- Horizontal Control Joints - Provide horizontal control joints at all locations as noted for the specific project.
- Ekodeck Weatherboards will expand and contract in their length. Vertical Control Joints, where the end of a board is inserted into a J-Trim, must have 5mm clearance at each end.

Ekodeck® Cladding / Weatherboard

TECHNICAL GUIDE

5.3 Vertical Installation

- Horizontal steel top-hat battens must be fixed at maximum 500mm centre-to-centre spacing, shall be fixed with two screws at each stud.
- When using J-Trim horizontally at the base 10mm holes are required to be drilled into J Trim every 450mm plus the LHS and RHS corners to provide adequate drainage.
- At least every second batten should take the weight of the board. Fasten clip to batten as usual. Predrill the board through the secondary hole in the clip, then secure 30x2.8mm clout through the secondary hole in the clip through the board and through the batten.
- When working around windows, doors or fixtures, ensure Ekologix J-Sections are installed around the perimeter of the opening/penetration/service.
- Allow a gap between Ekologix Panels and the perimeter of any openings for application of sealant.
- Screw fix all Ekologix Clips to the steel top-hat batten. Screws must penetrate minimum 3-full-threads into steel framing.
- When making a horizontal or vertical join, ensure the both J-Sections are fixed directly to a batten.
- Ekodeck Weatherboards will expand and contract in their length. Horizontal Control Joints, where the end of a board is inserted into a J-Trim, must have 5mm clearance at each end.
- Note that as a minimum, horizontal control joints typically correspond to the storey height. In all cases horizontal control joints must be made at all construction joints and at the junctions of dissimilar substrates where the potential for differential movement exists.

Ekodeck® Cladding / Weatherboard

TECHNICAL GUIDE

6 Typical Construction Details

Ekodeck Cladding System must be installed in strict accordance with this Technical Manual and comply with all relevant building code, standards, and local government regulations.

These typical construction details are provided as a guide for construction industry professionals. These typical construction details do not constitute a project specific specification and should only be used within the context of project specifications.

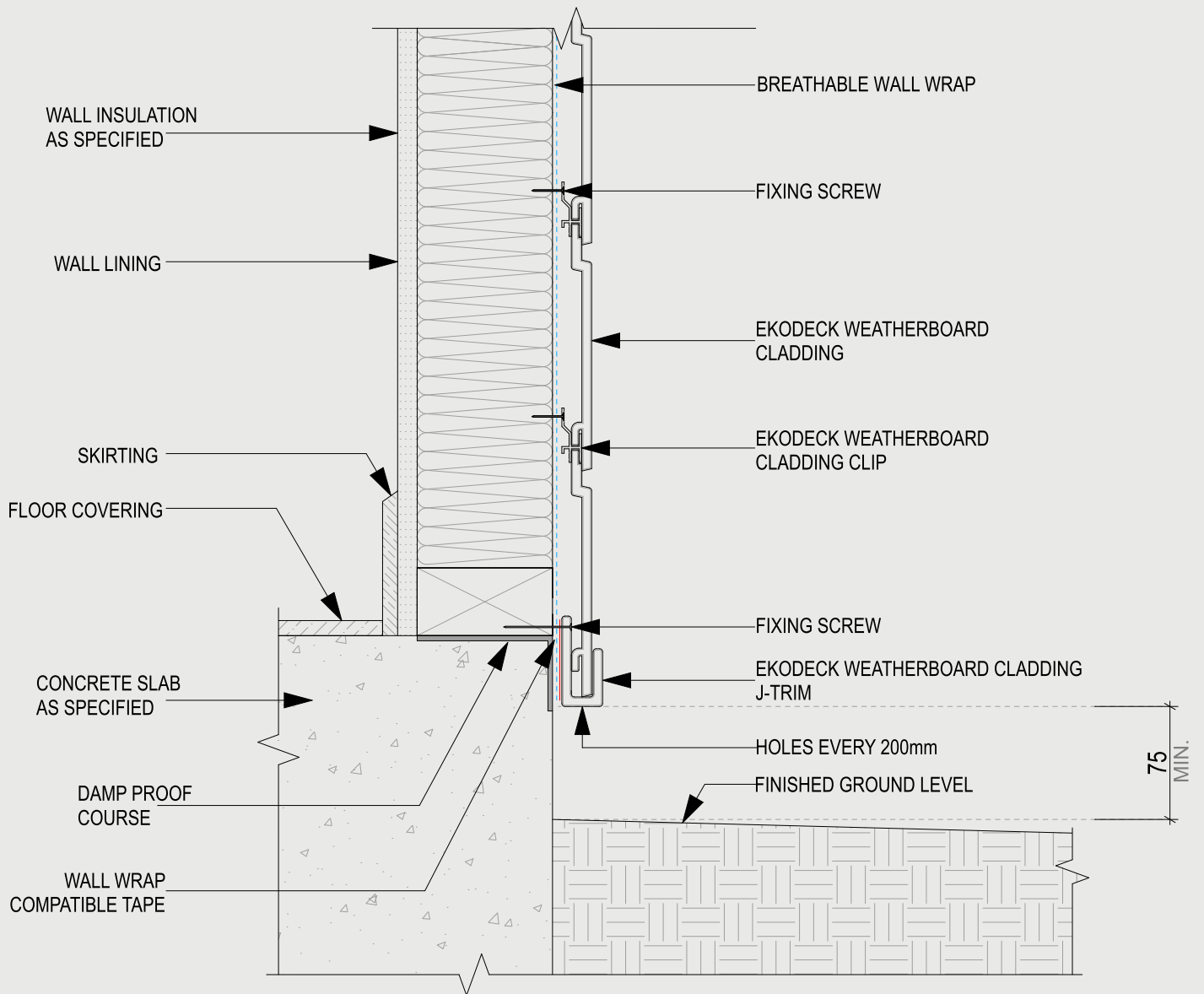
Modifications to these drawings shall not be made without the approval of Ekologix.

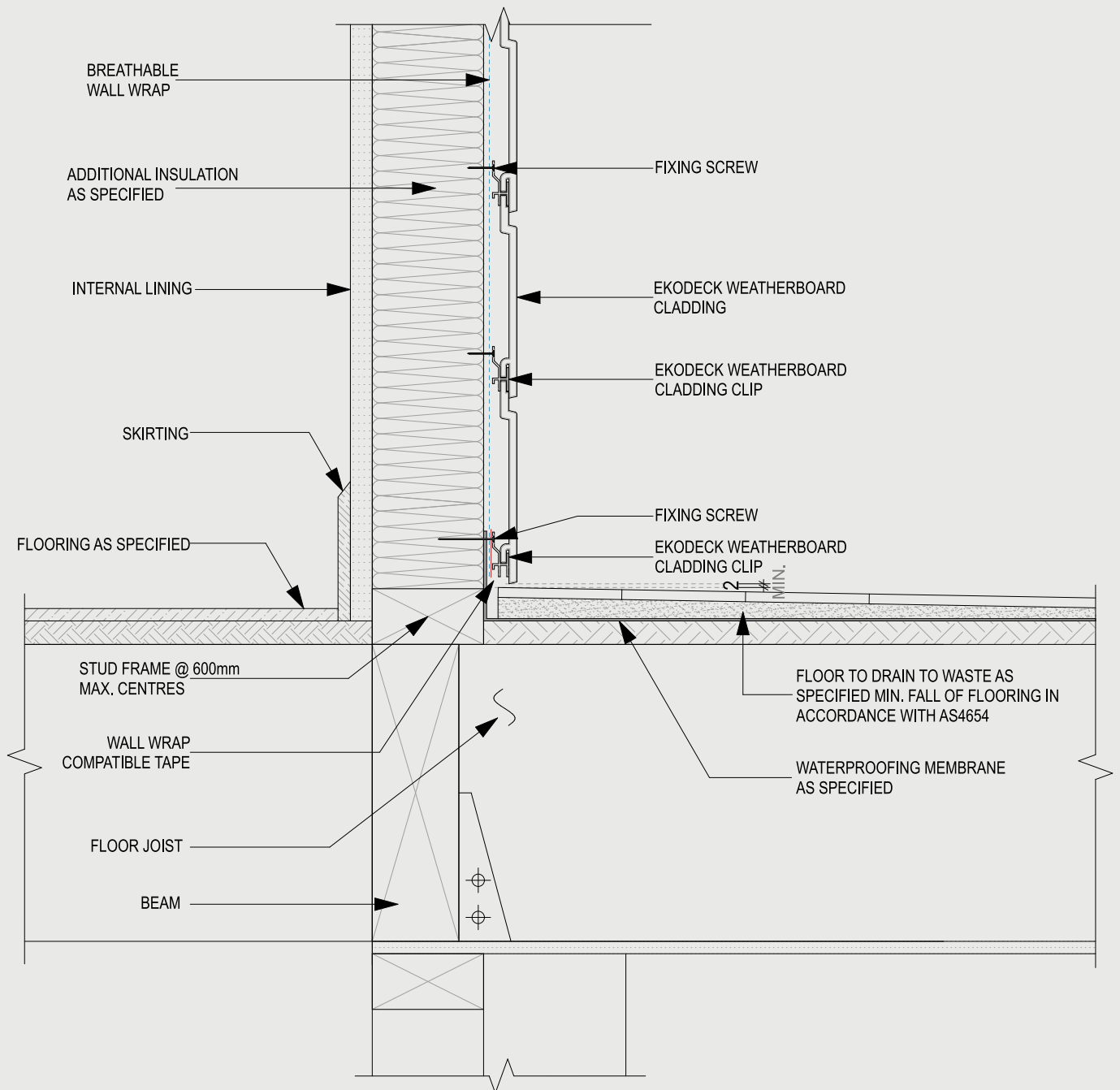
Ekodeck® Cladding / Weatherboard

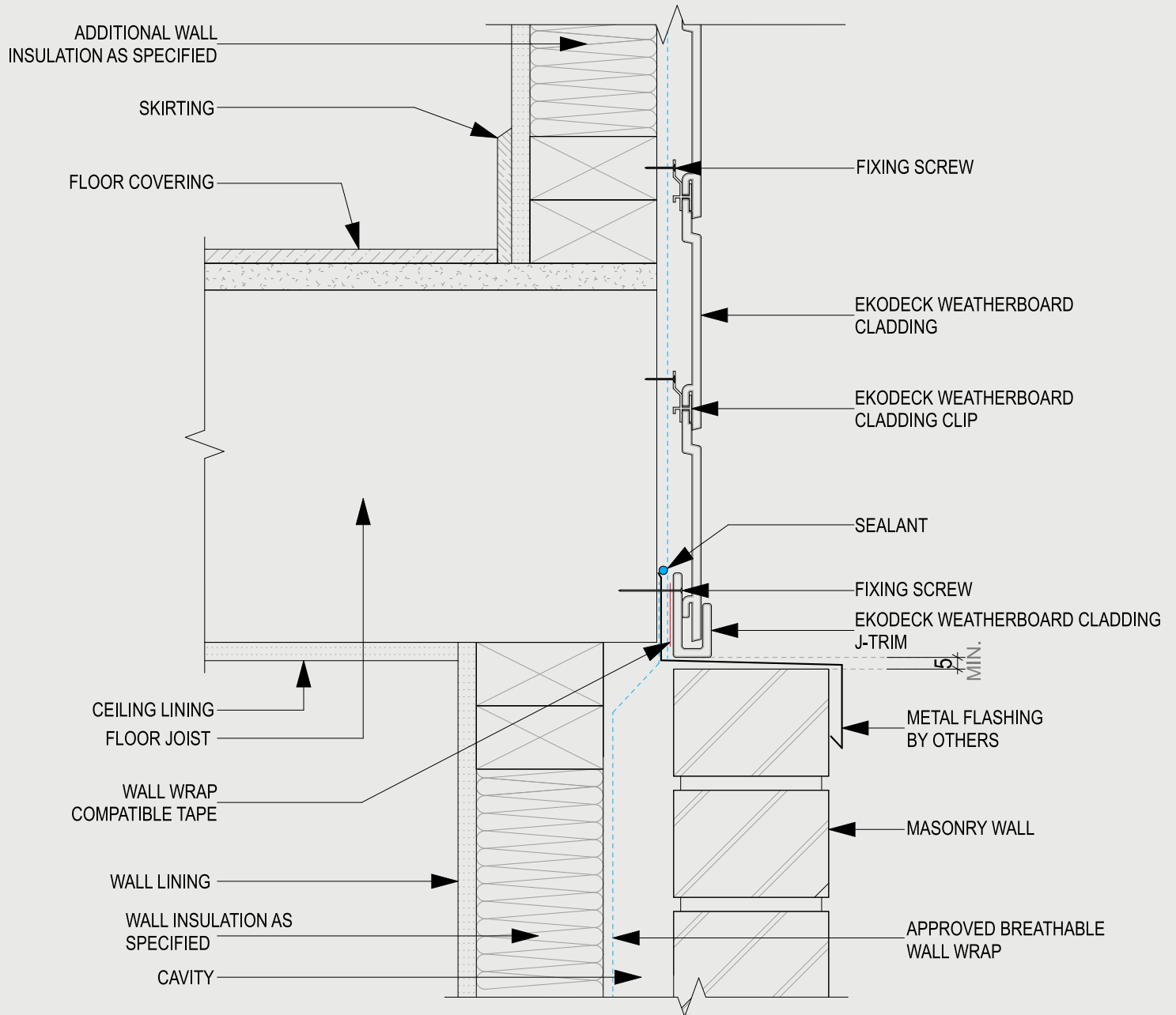
TECHNICAL GUIDE

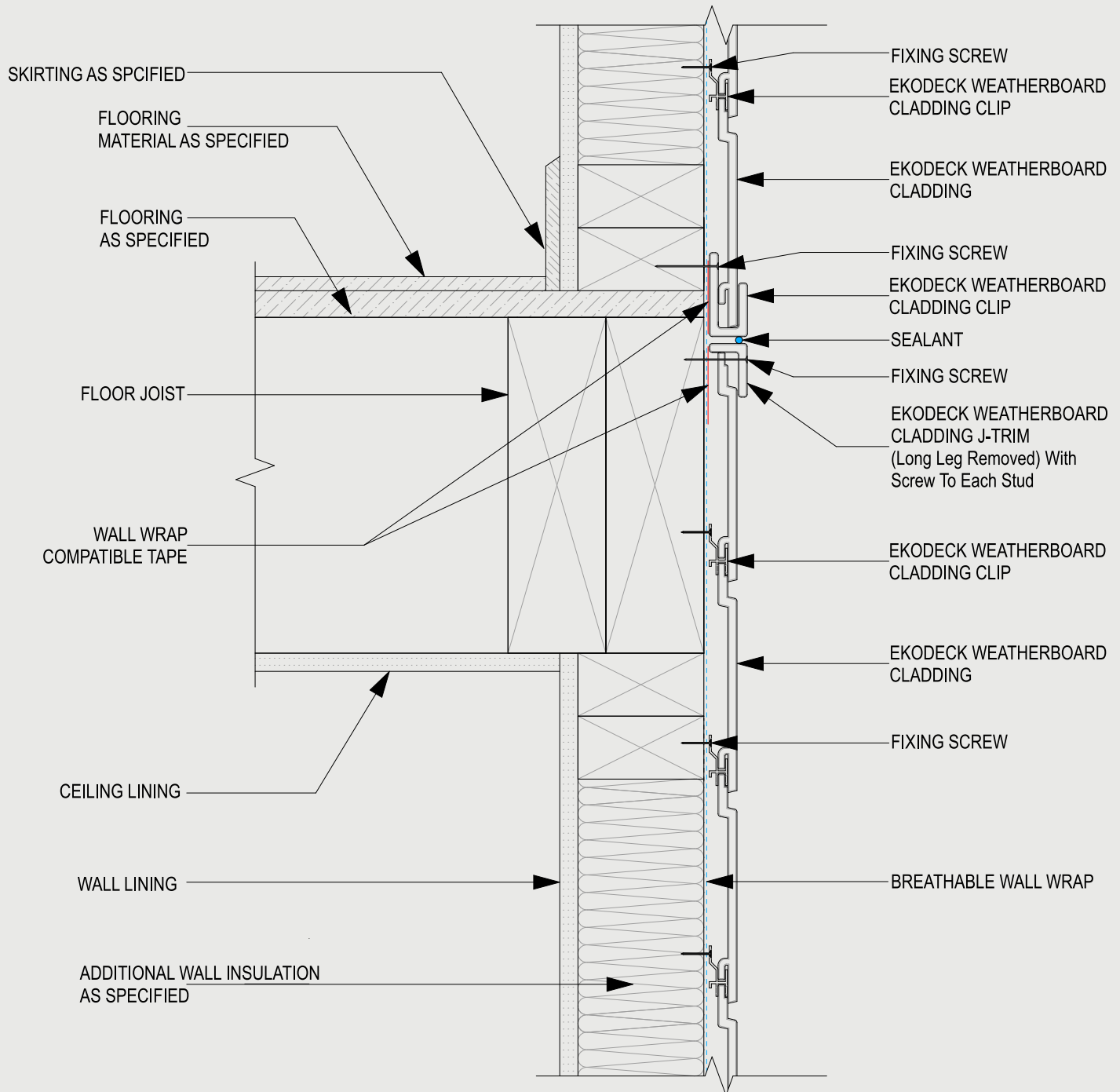
6.1 Typical Construction Details - Horizontal (clip-fixed to stud)

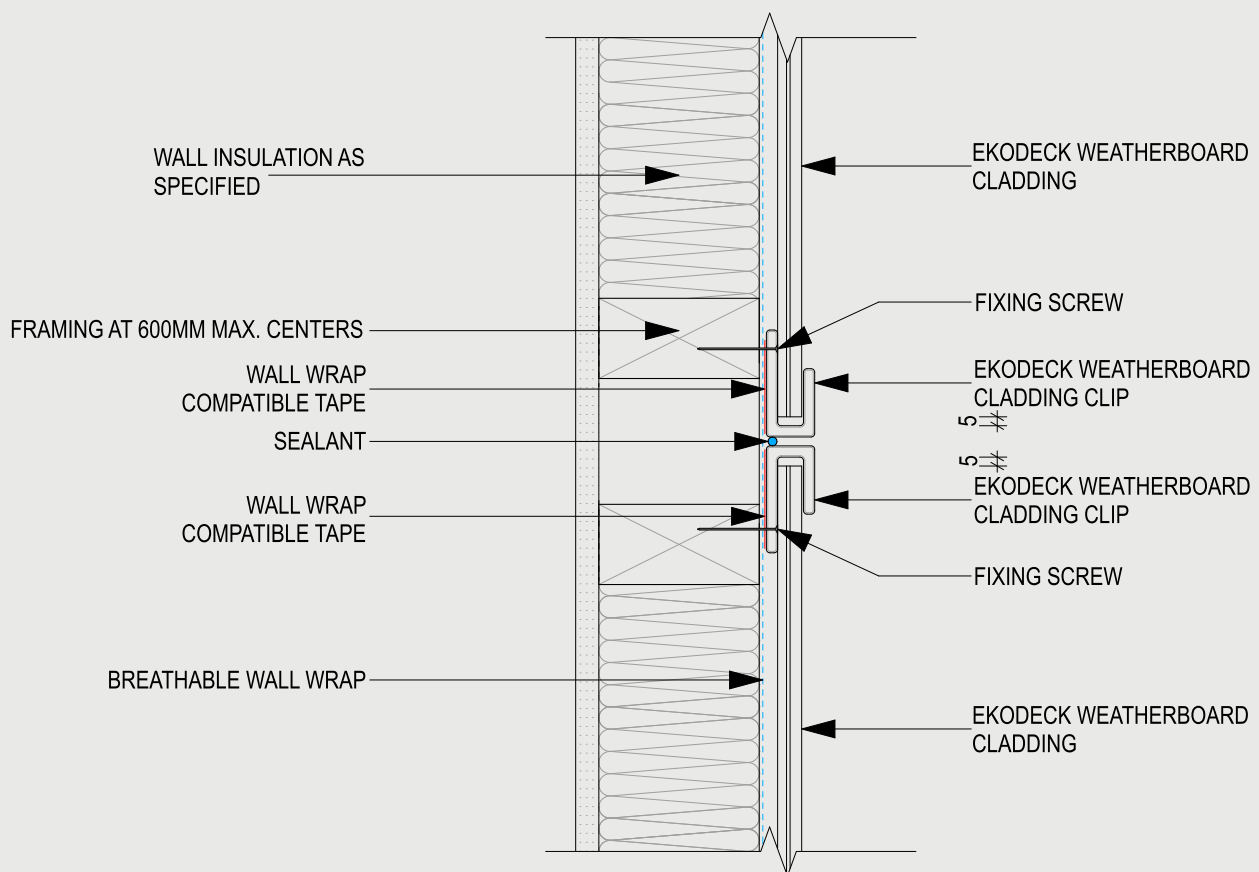
THIS PAGE IS BLANK



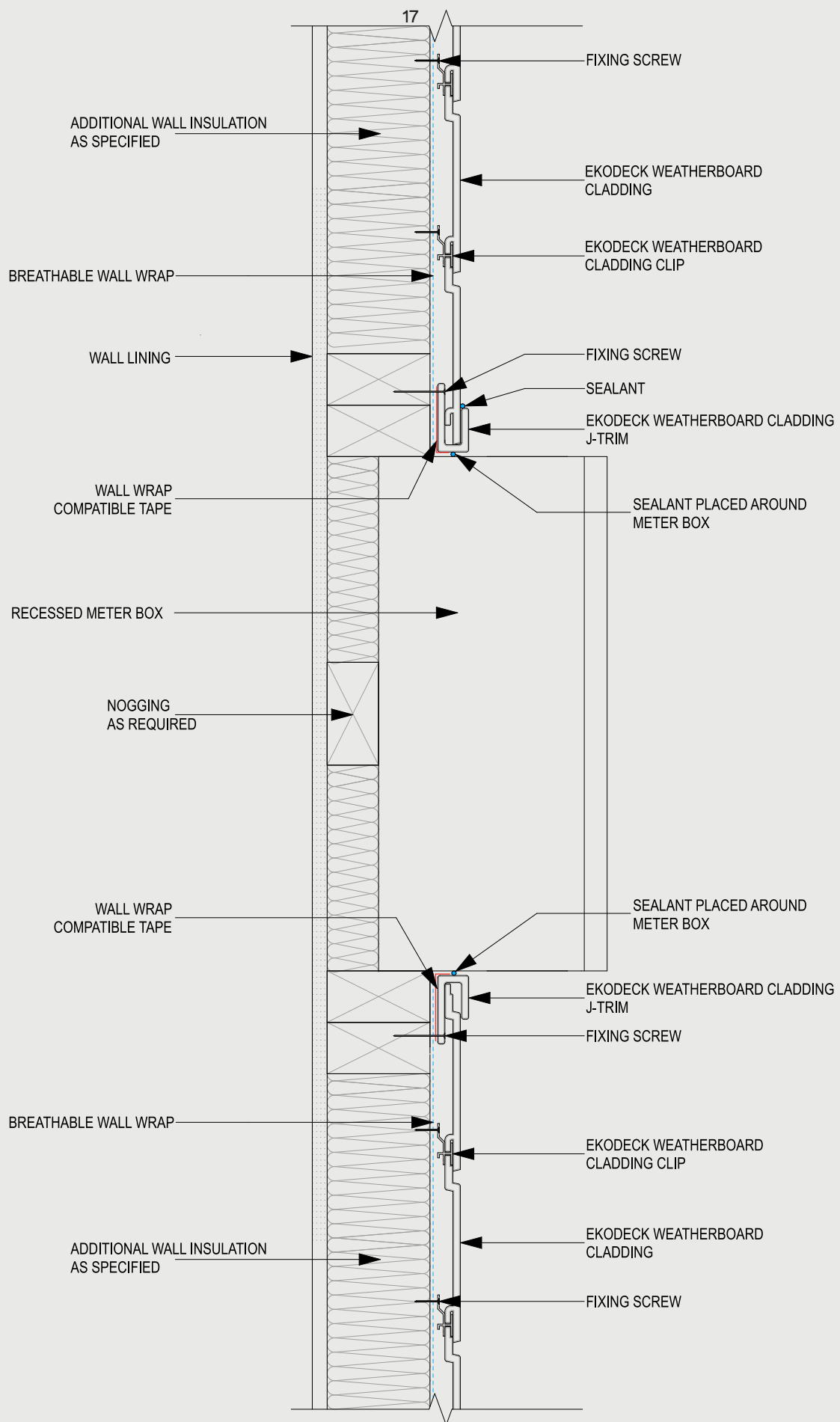


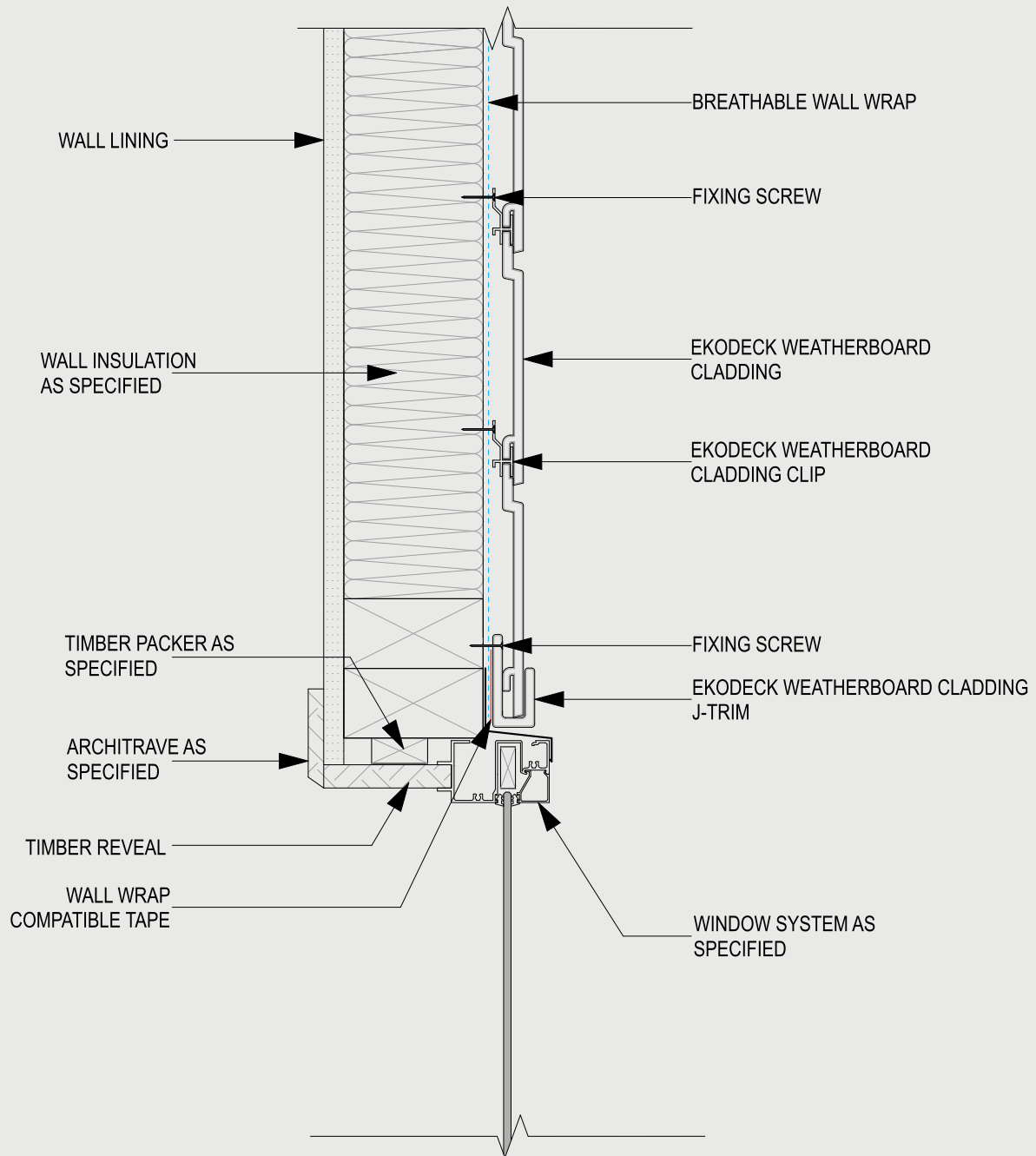


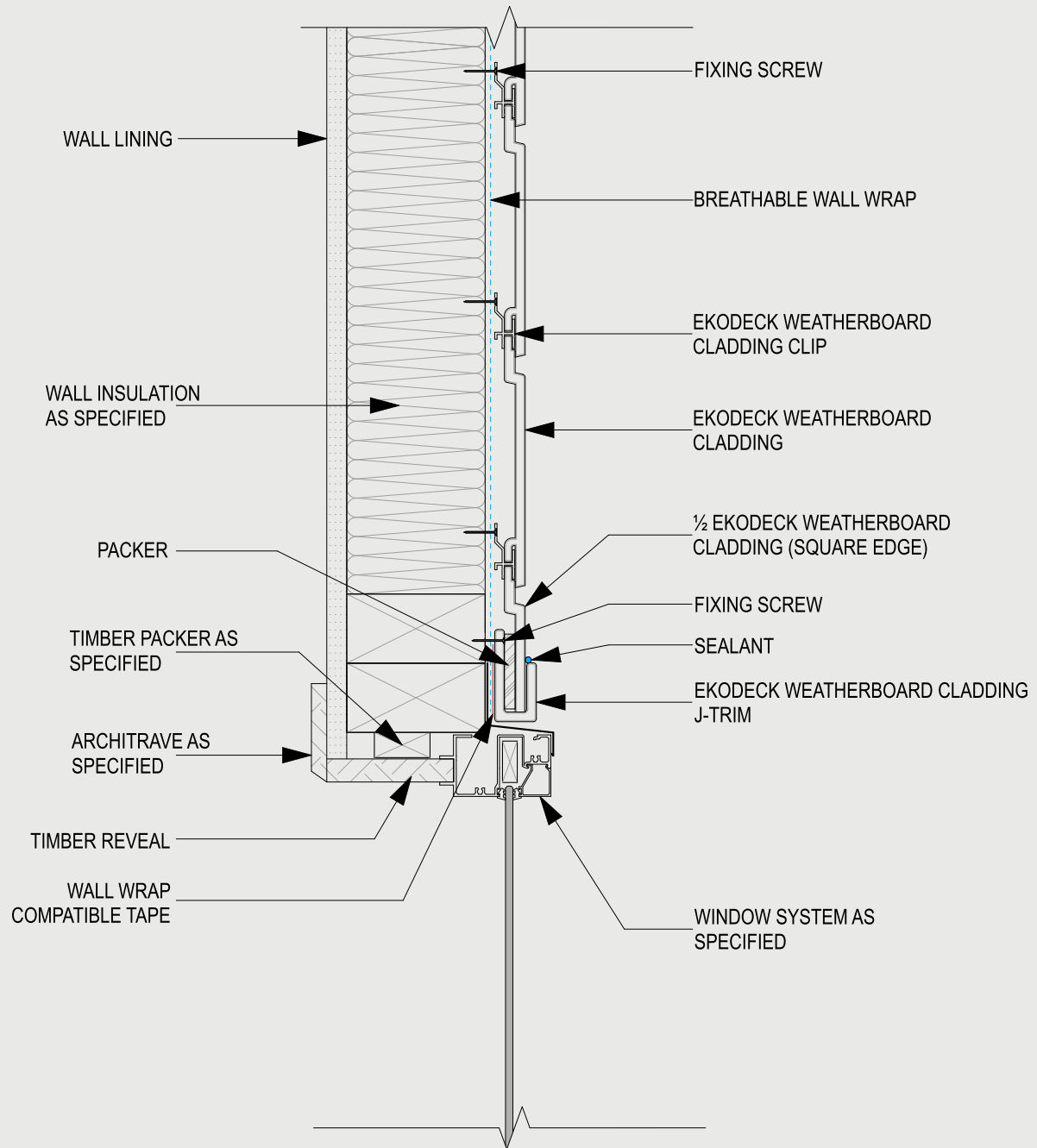


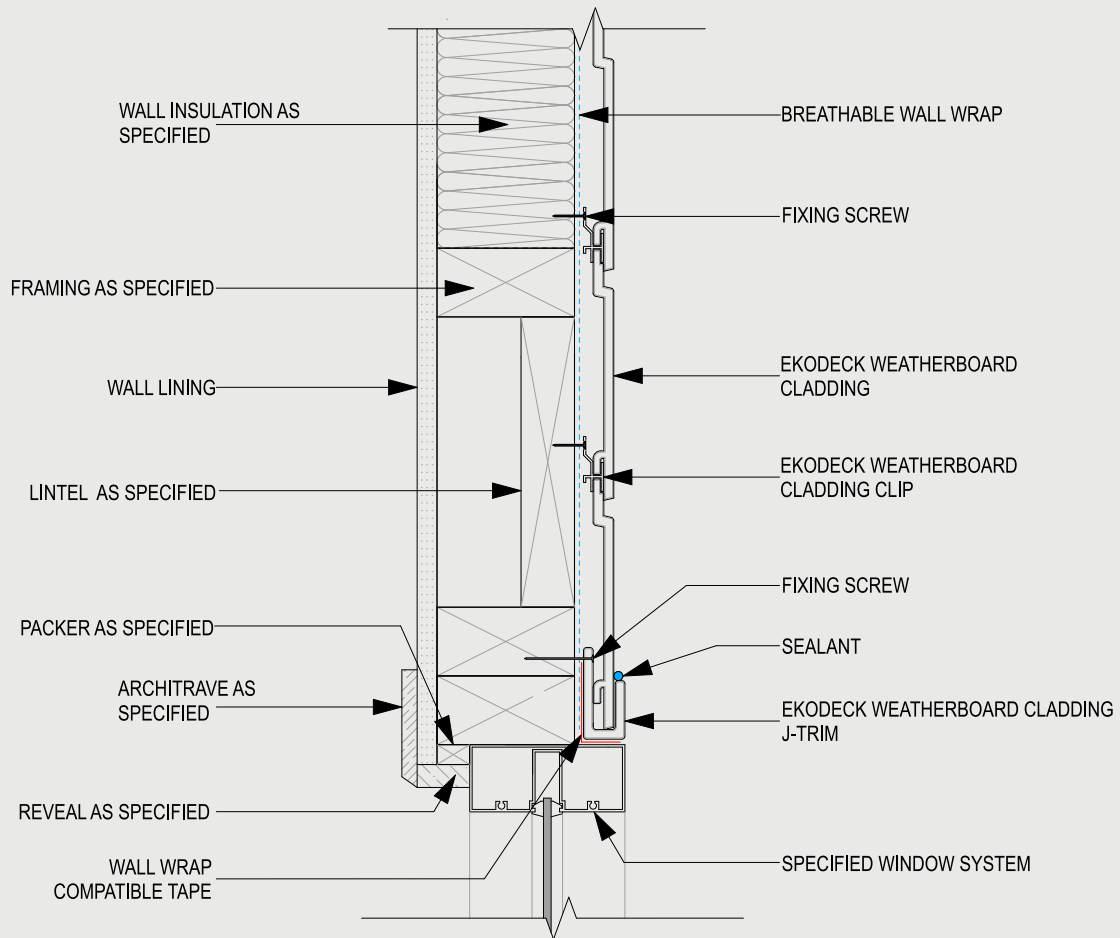
**NOTE:**

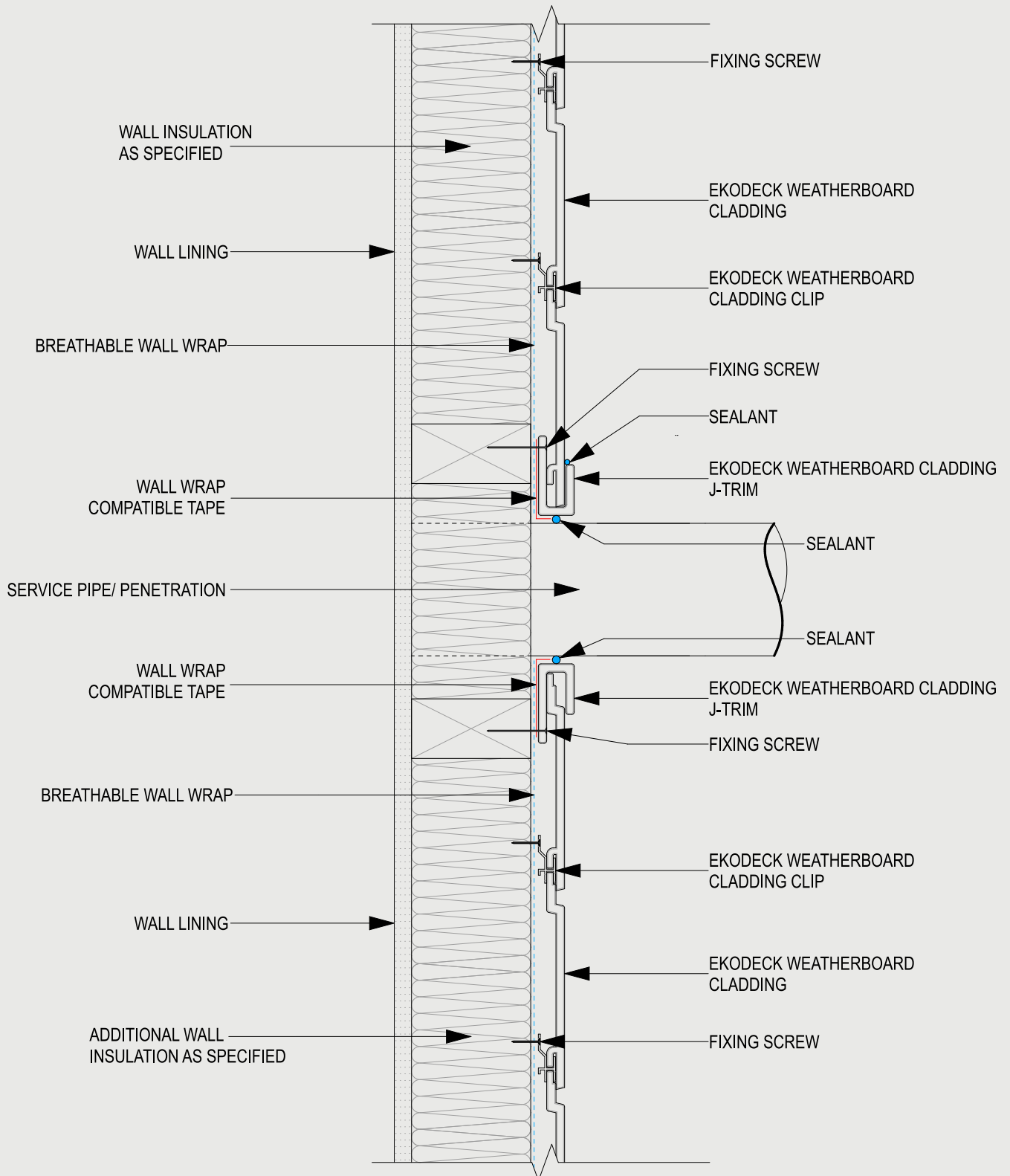
LEAVE 5mm GAP BETWEEN EKODECK WEATHERBOARD AND J-SECTION

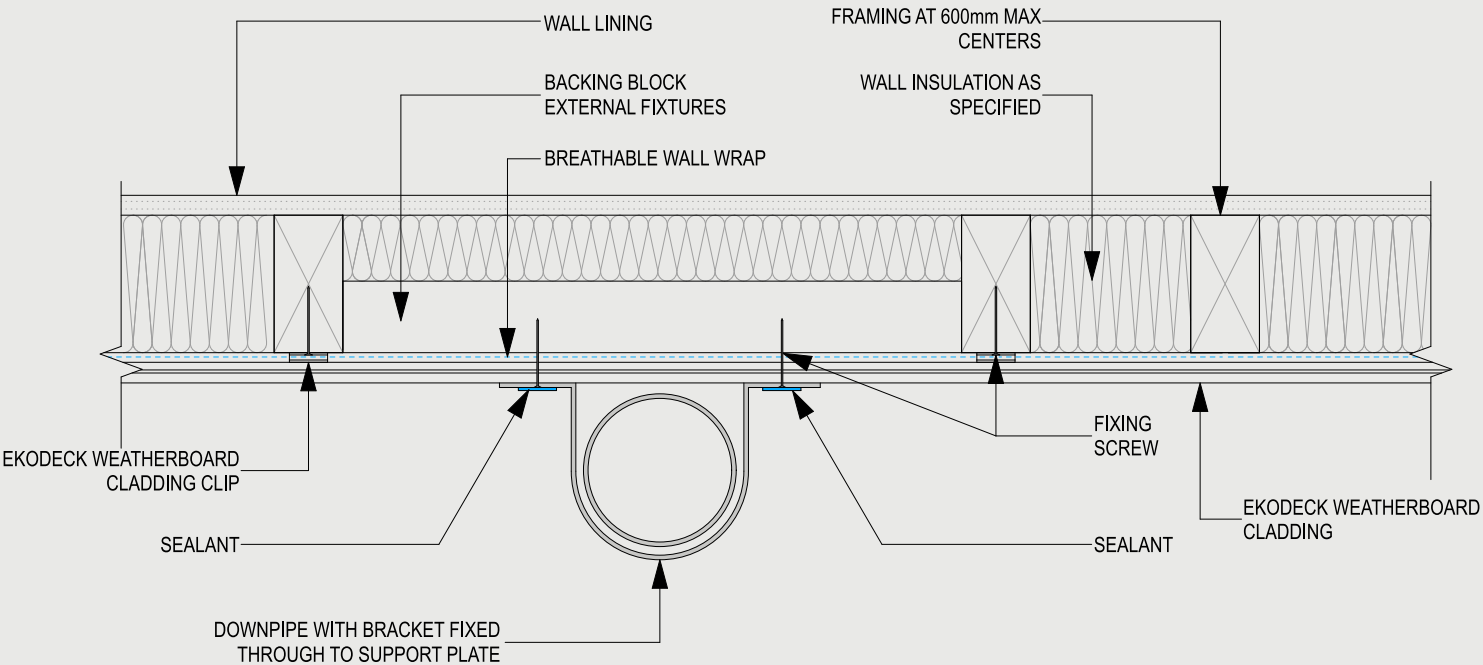


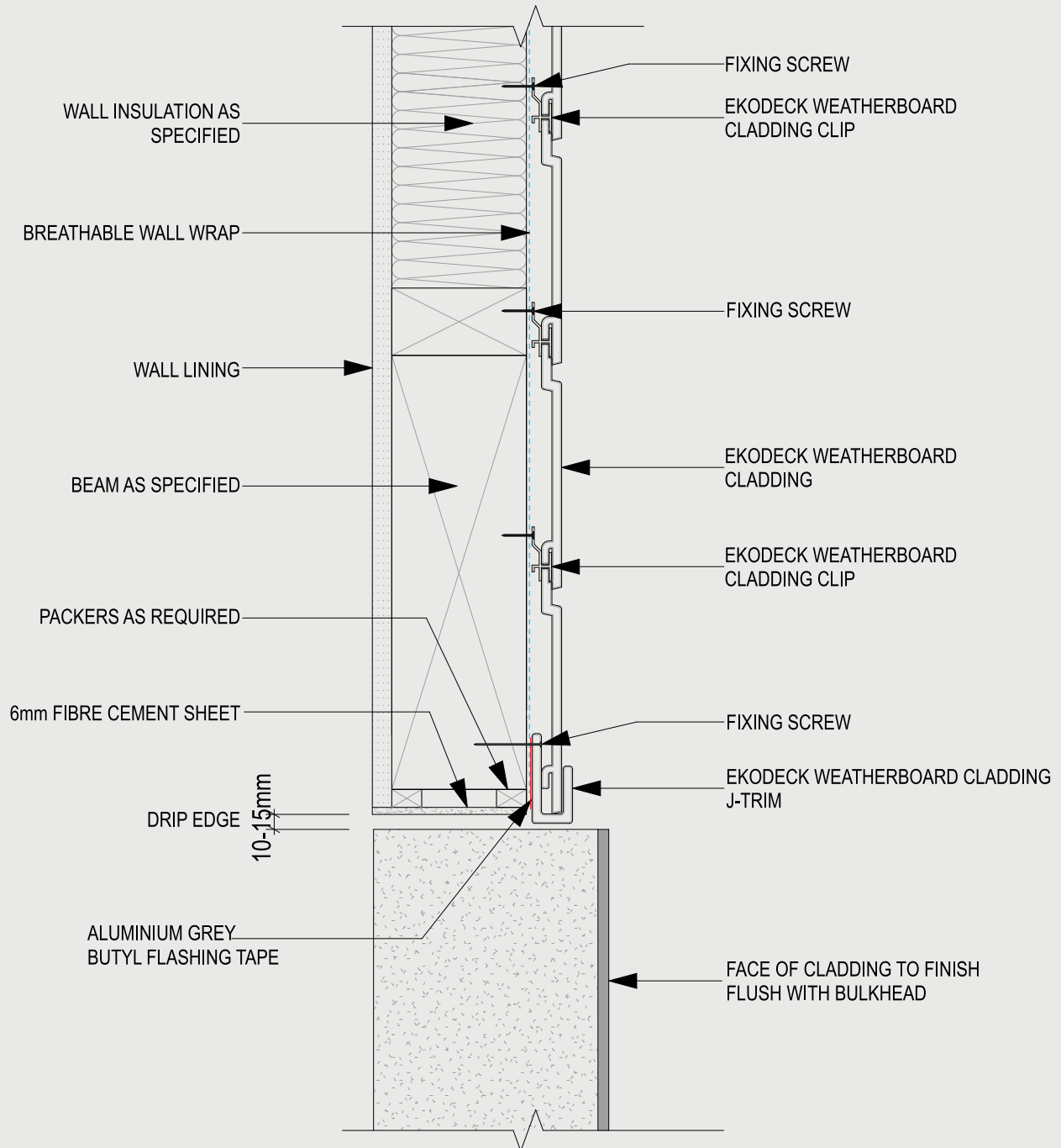


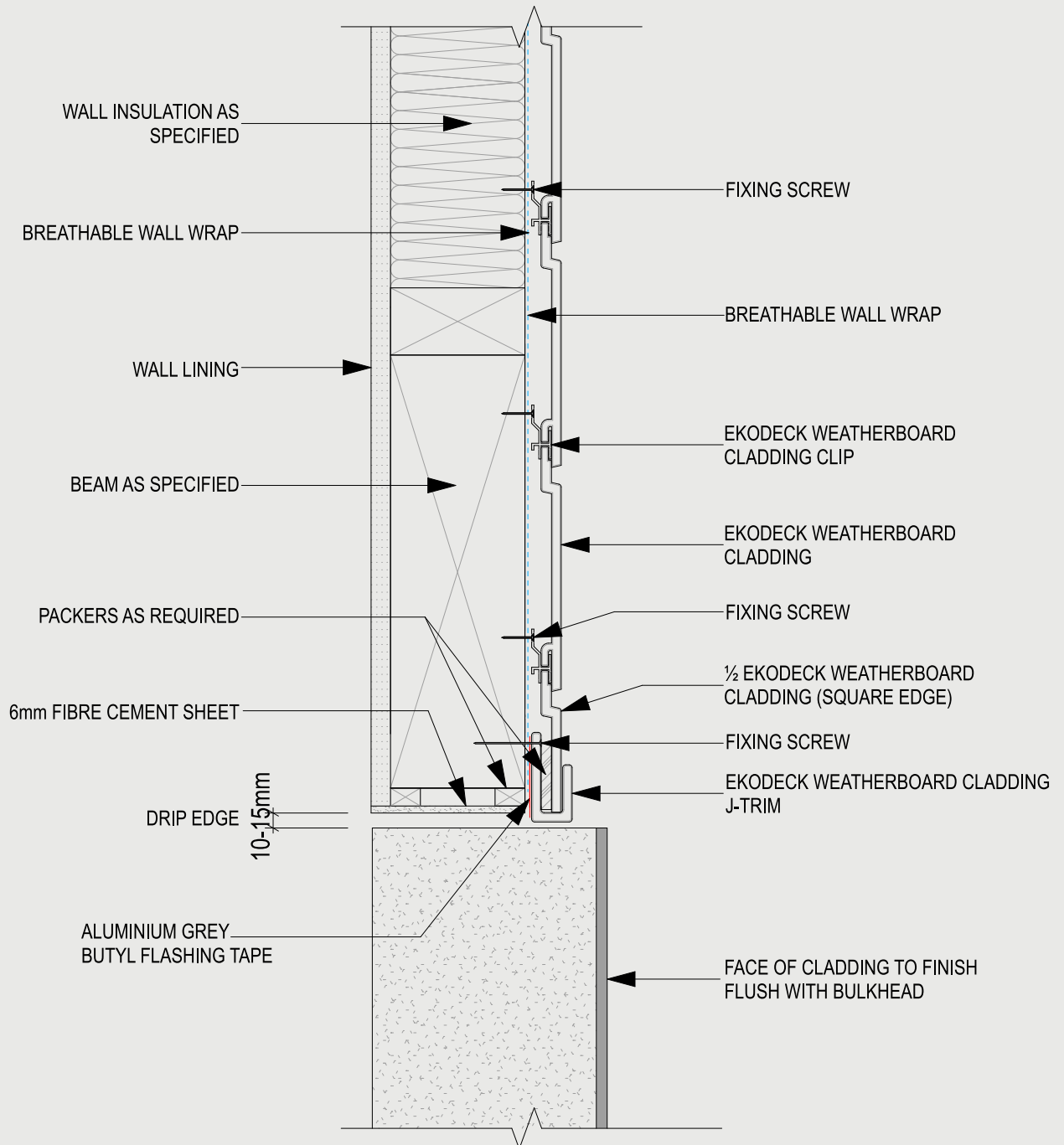


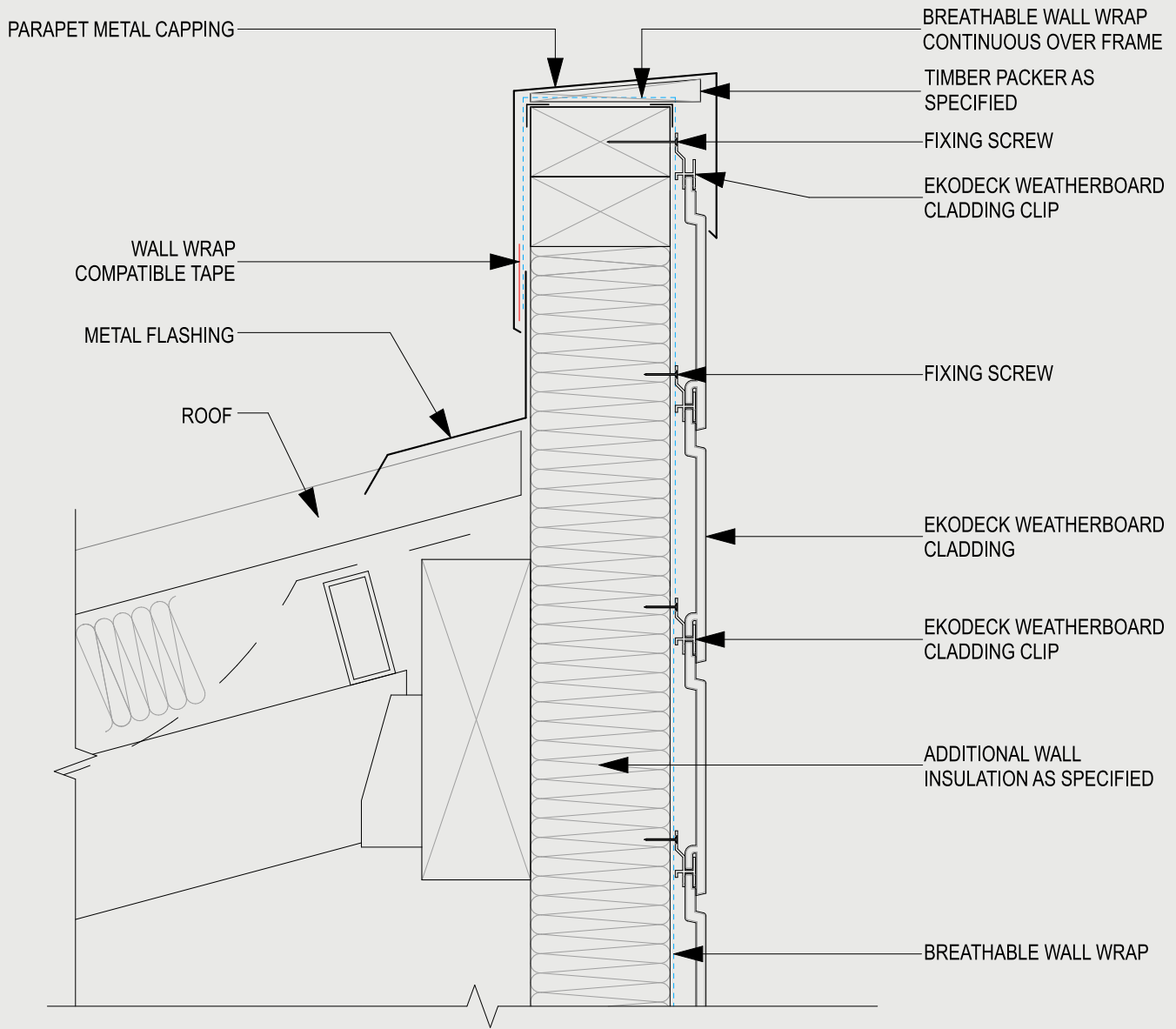


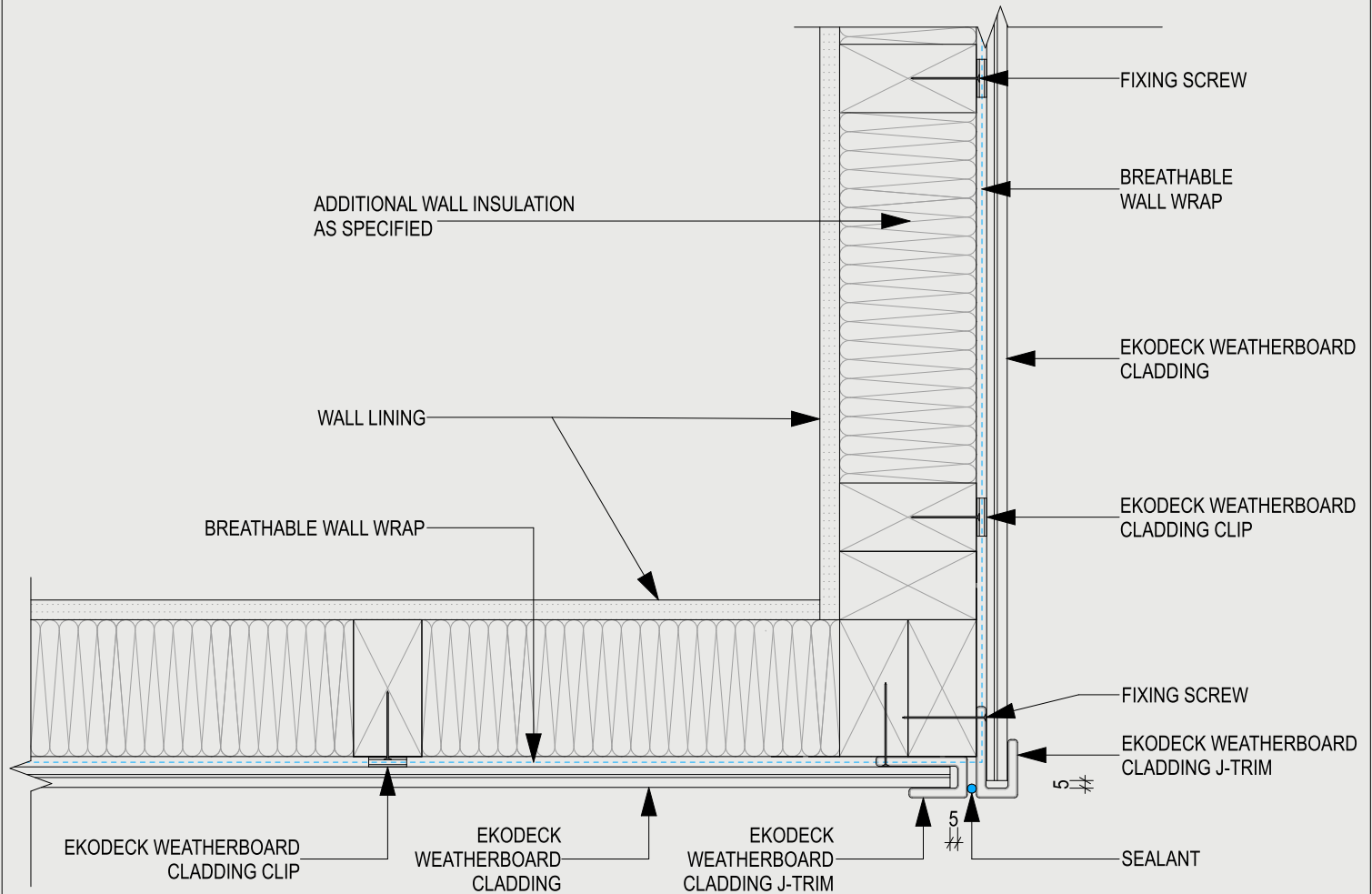




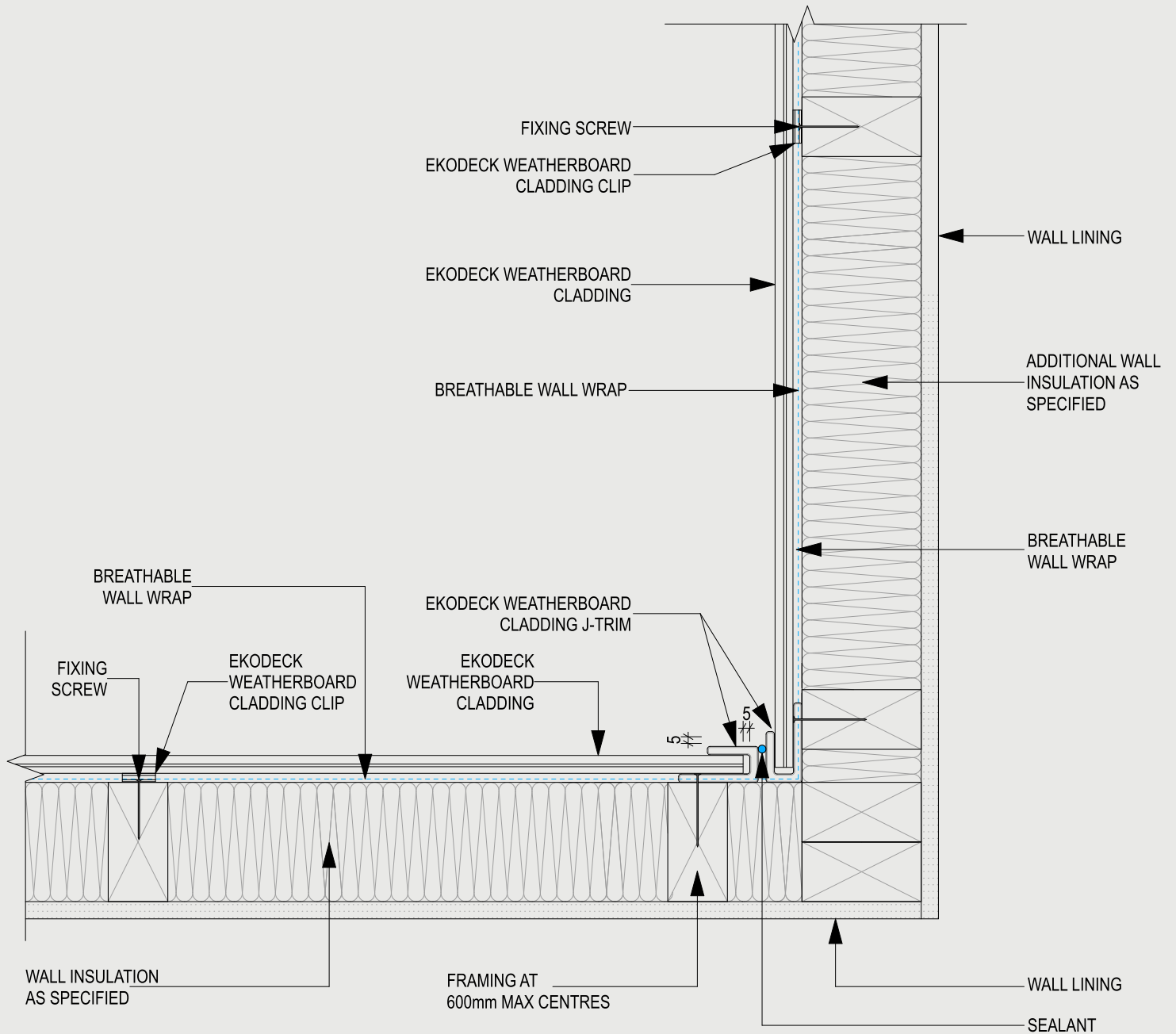




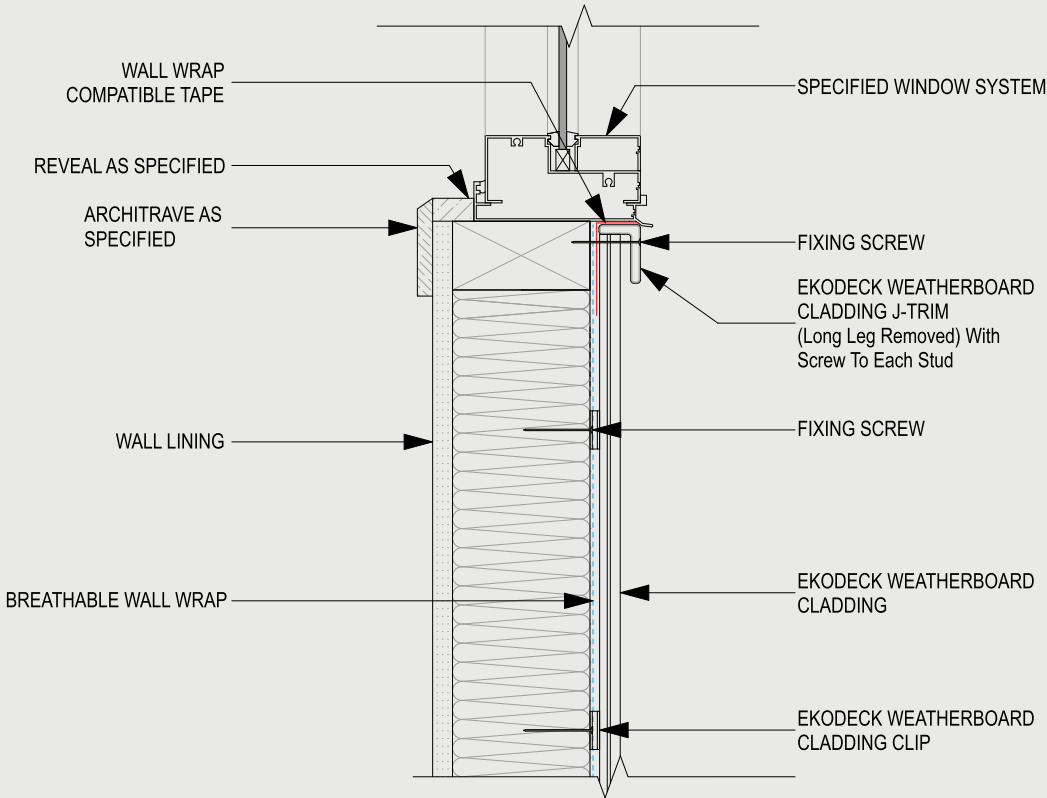


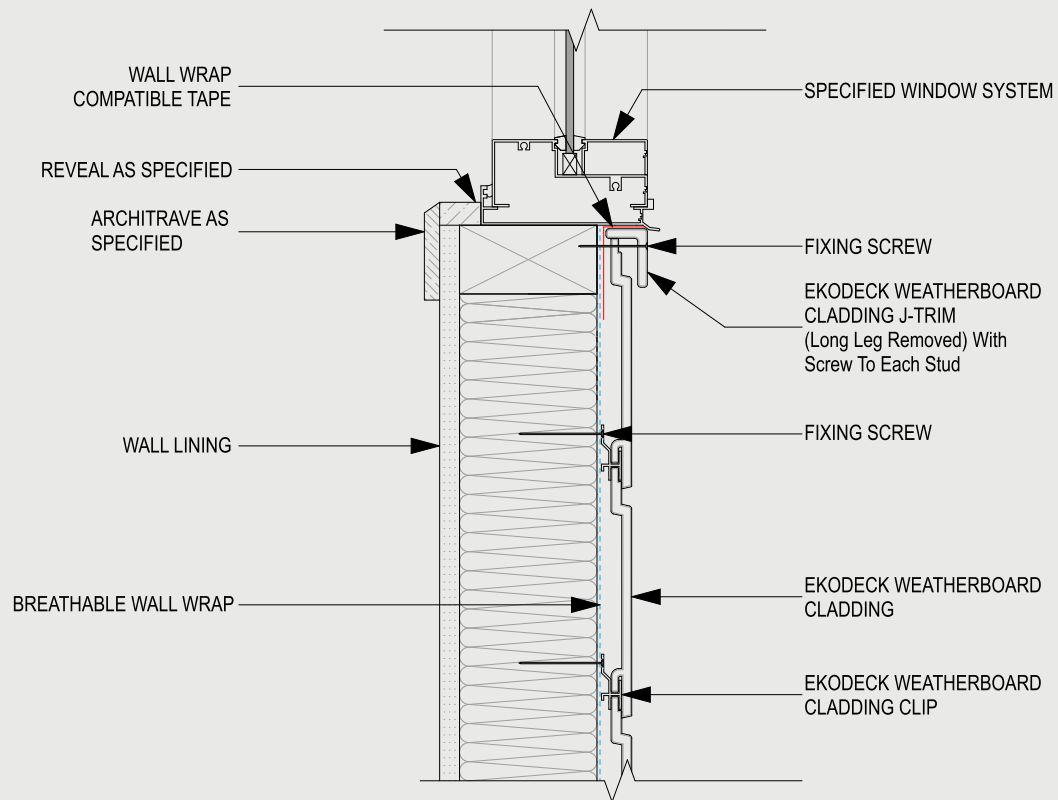


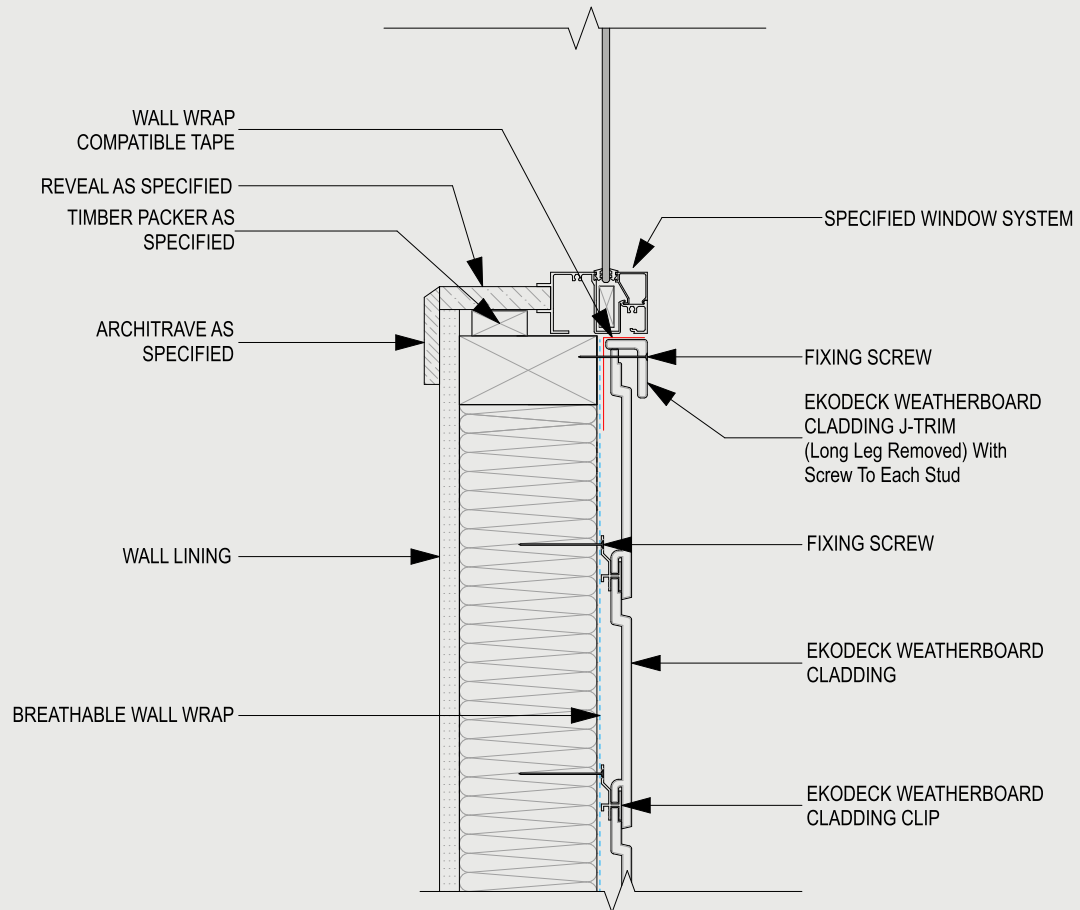
NOTE:
LEAVE 5mm GAP BETWEEN ECODECK WEATHERBOARD AND J-SECTION

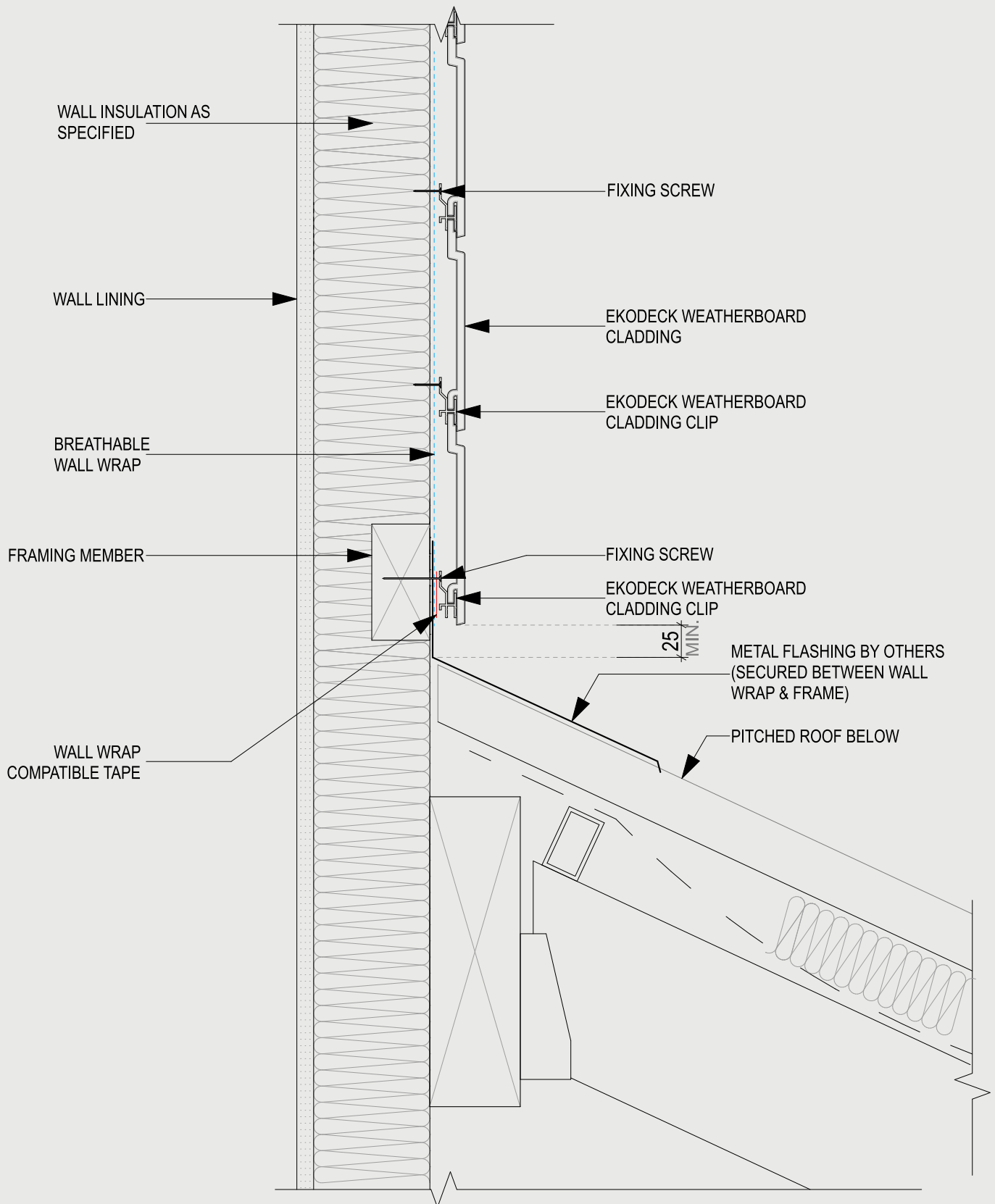


NOTE:
LEAVE 5mm GAP BETWEEN EKODECK WEATHERBOARD AND J-SECTION

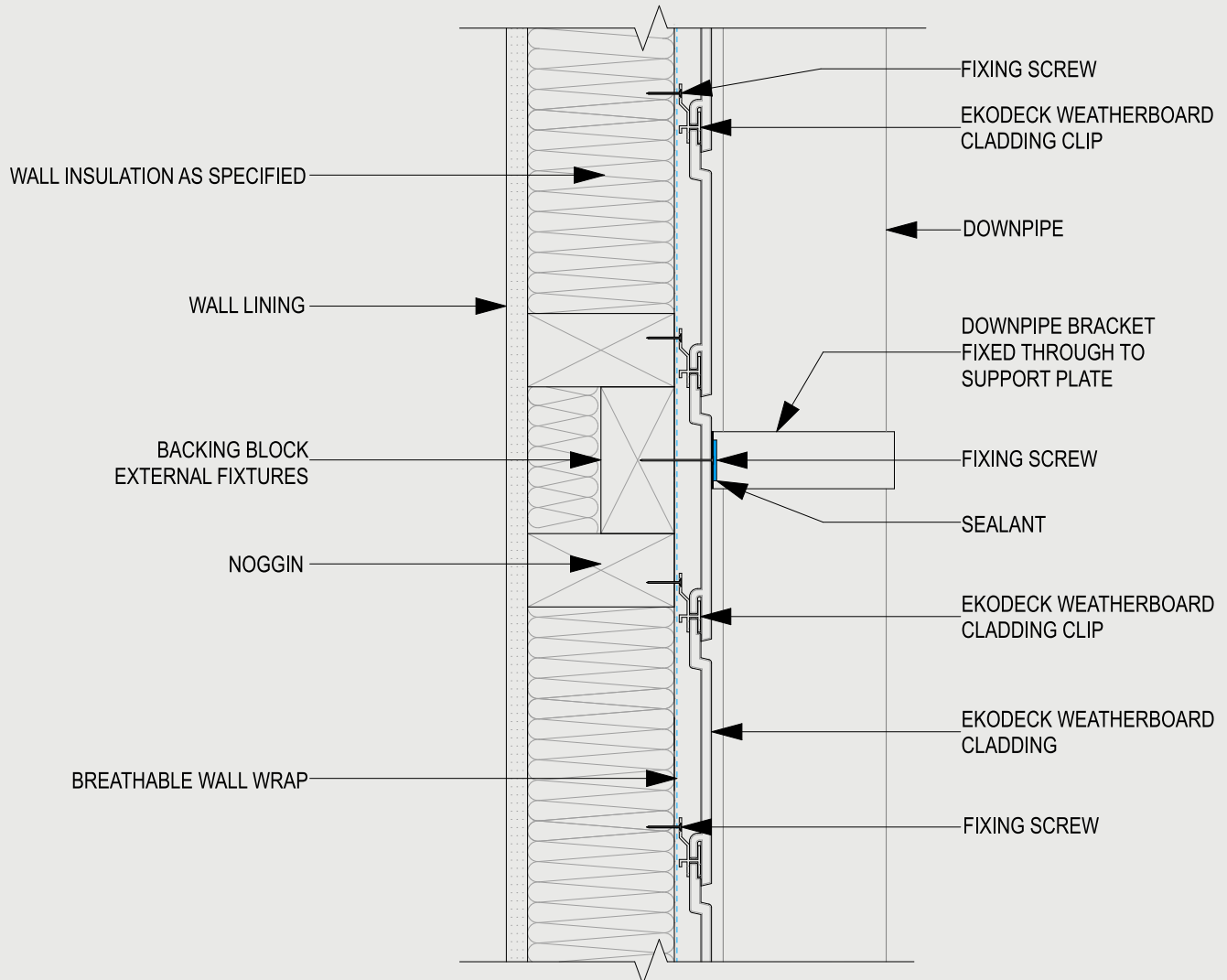








NOTE:
ALTERNATIVELY SEE "EK-001"

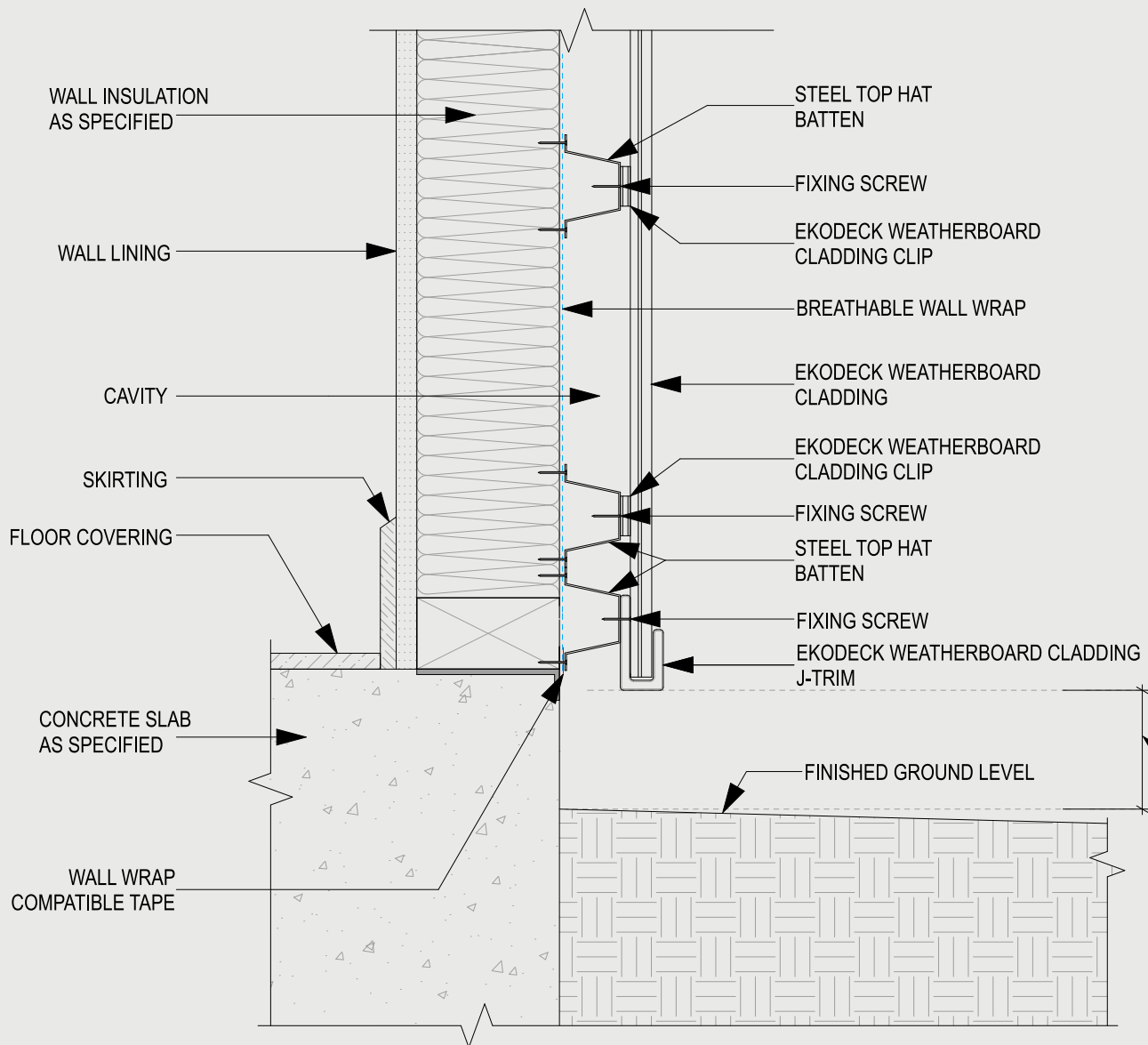


Ekodeck® Cladding / Weatherboard

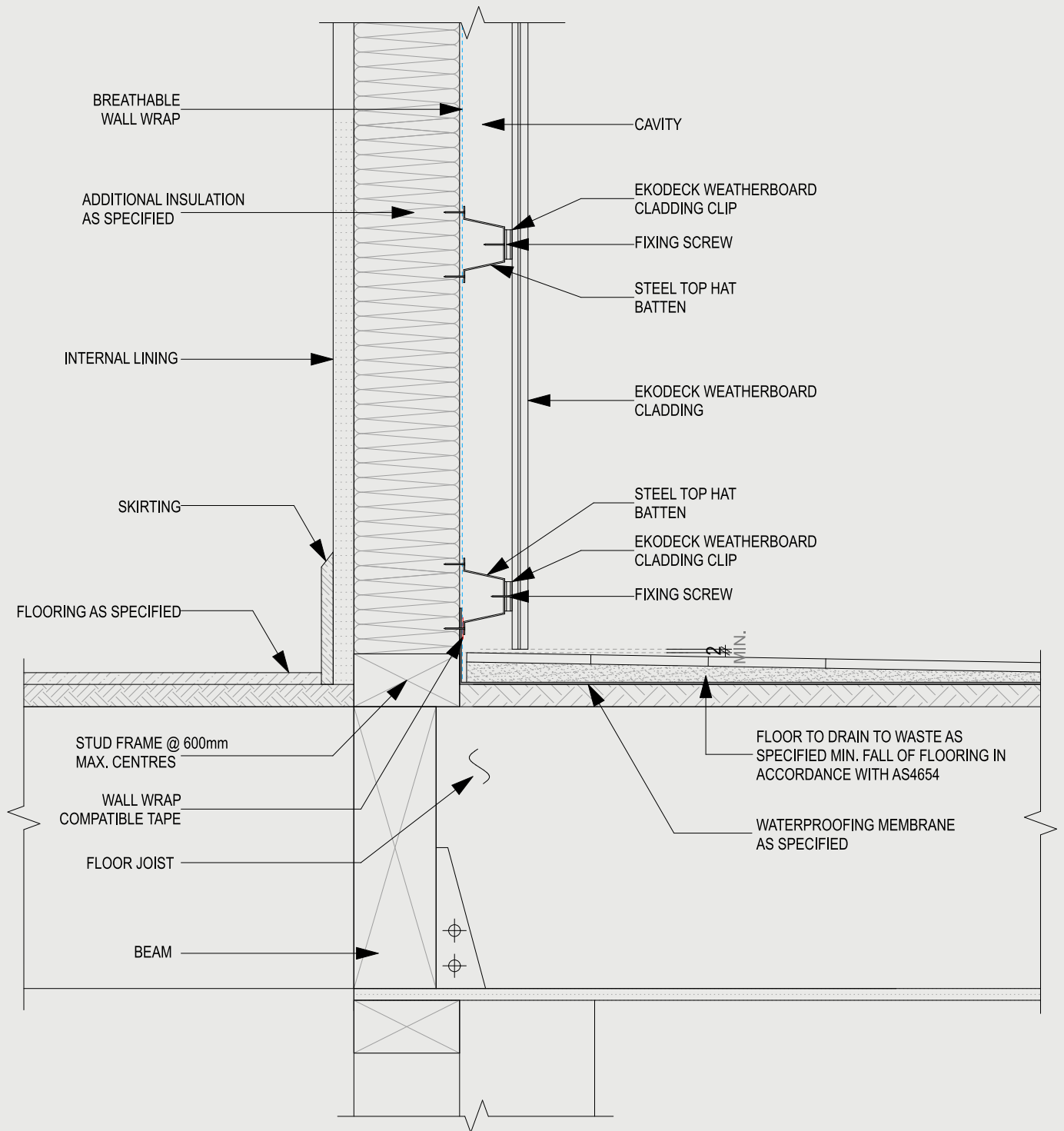
TECHNICAL GUIDE

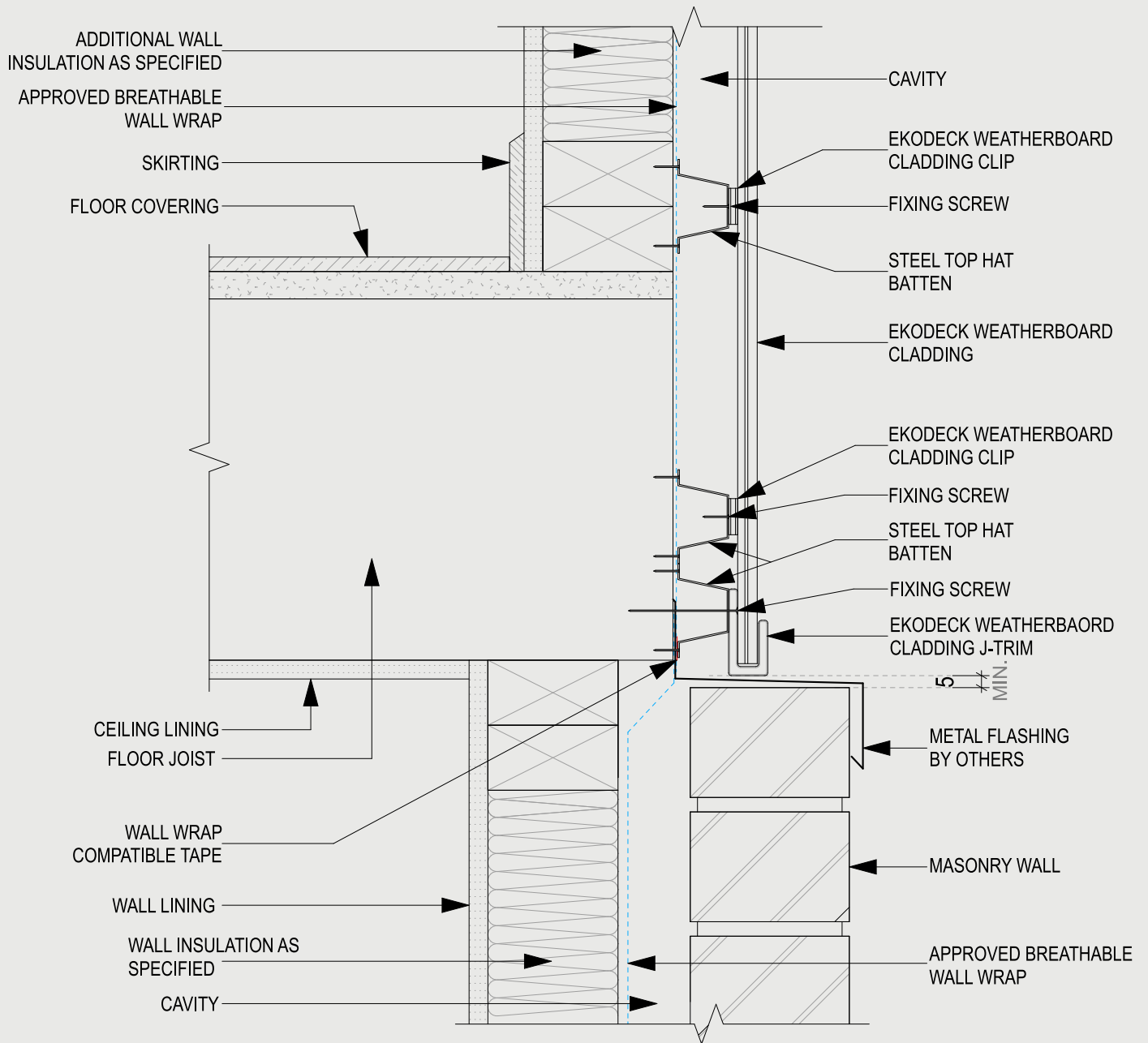
6.2 Typical Construction Details - Vertical (clip-fixed to steel top-hat batten)

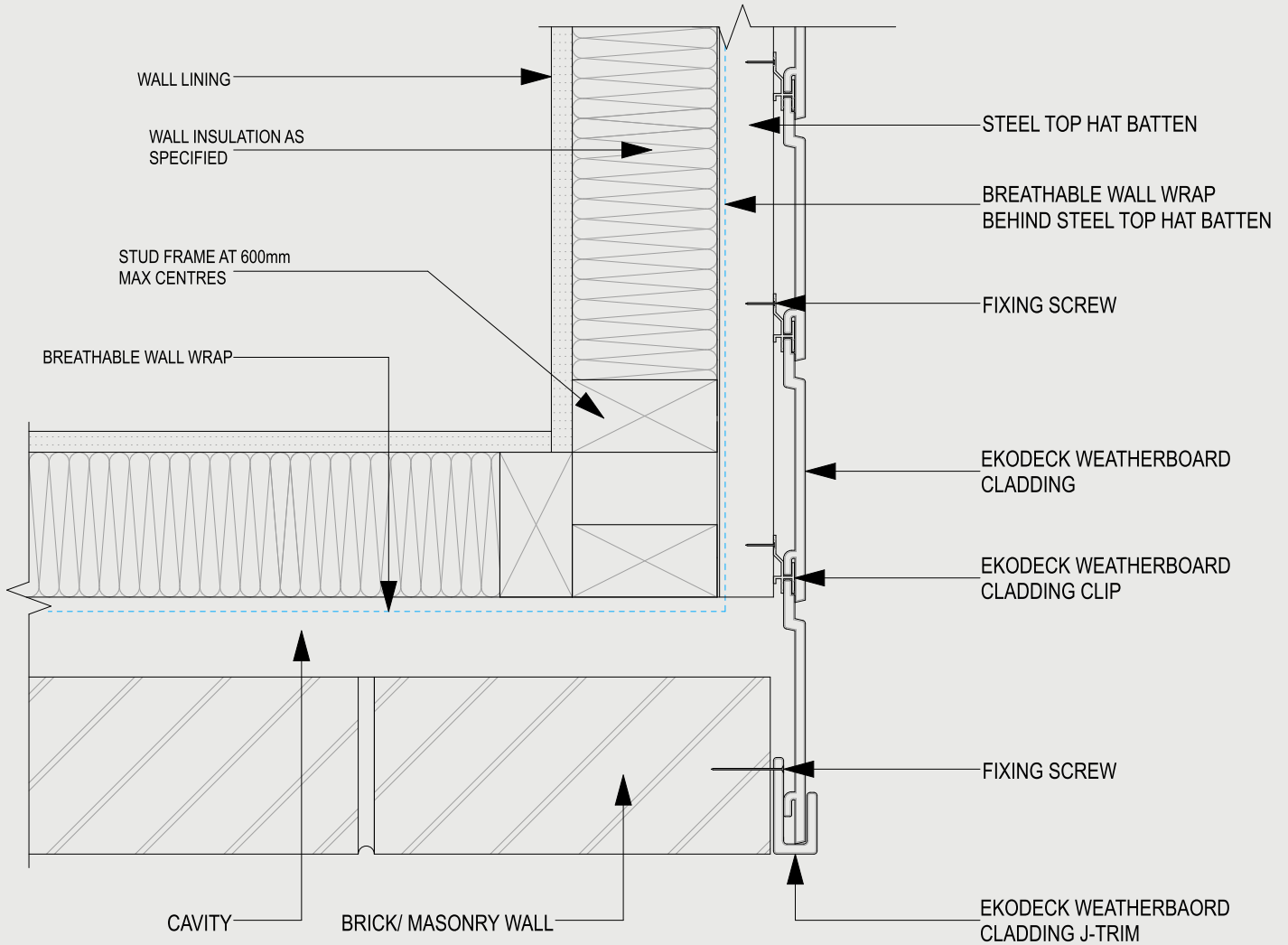
THIS PAGE IS BLANK

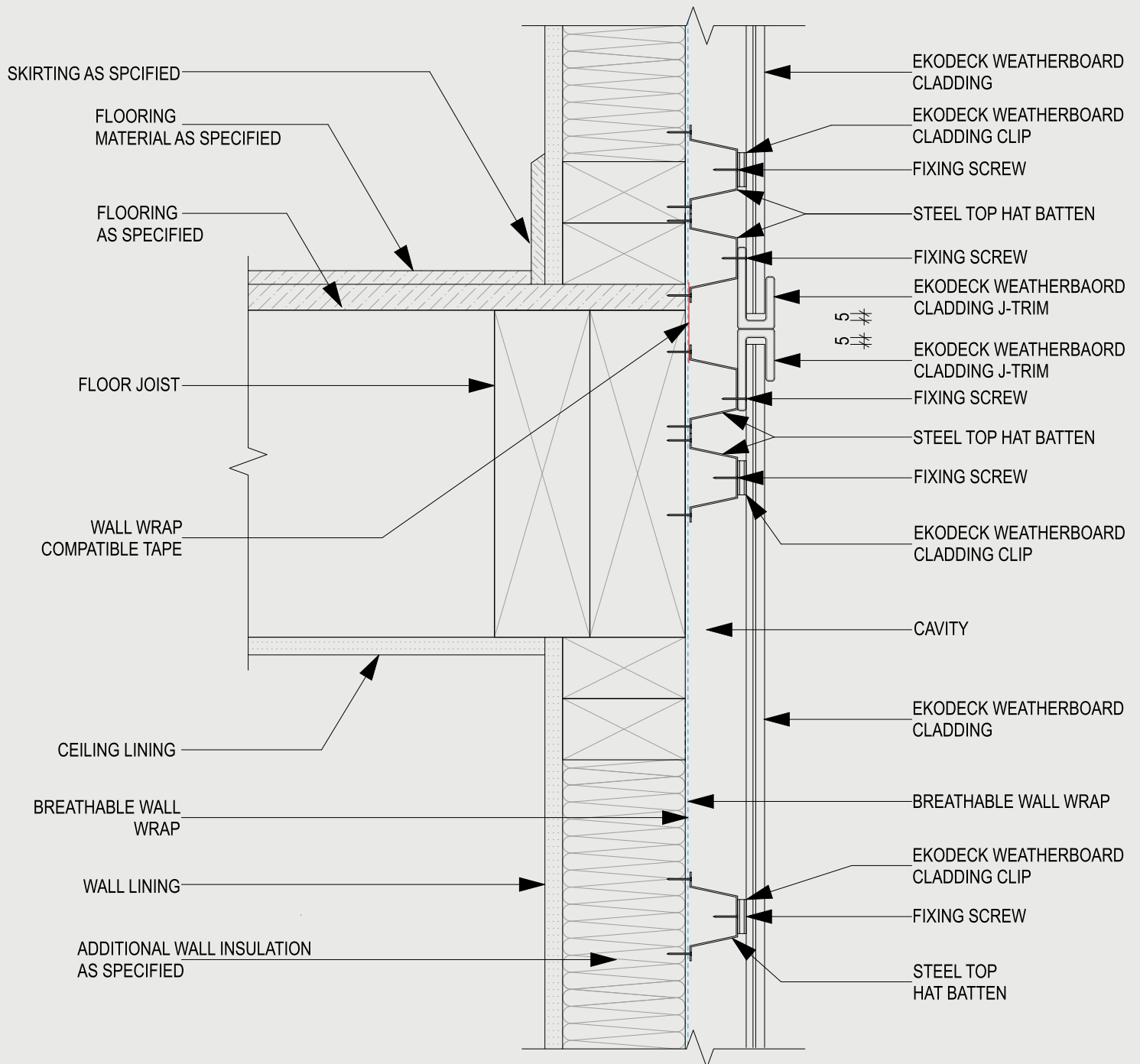


CLEARANCE AS PER THE BCA REQUIREMENTS FOR THE INTENDED APPLICATION
e.g. as per the specifications in Part 7.5.7 of the ABCB Housing Provisions

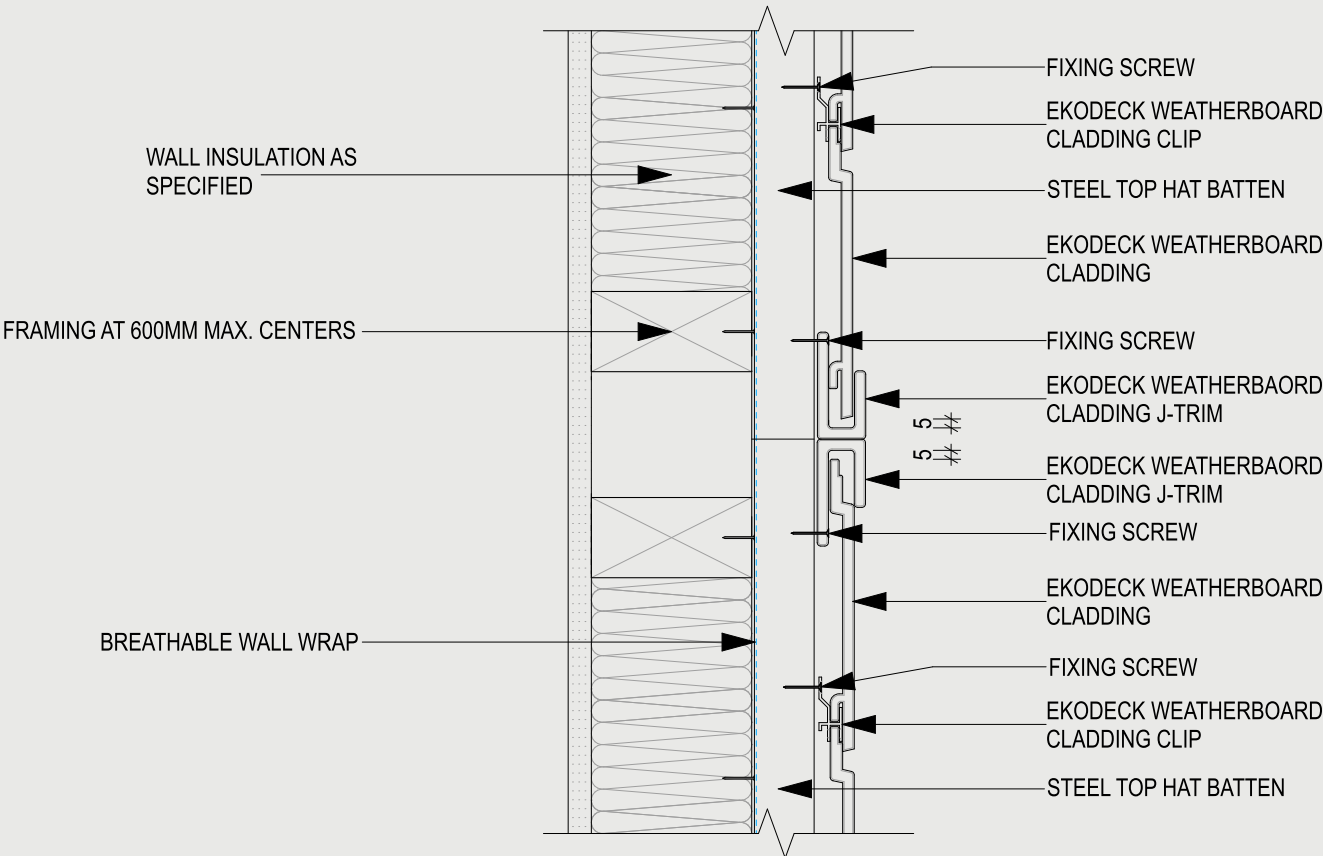




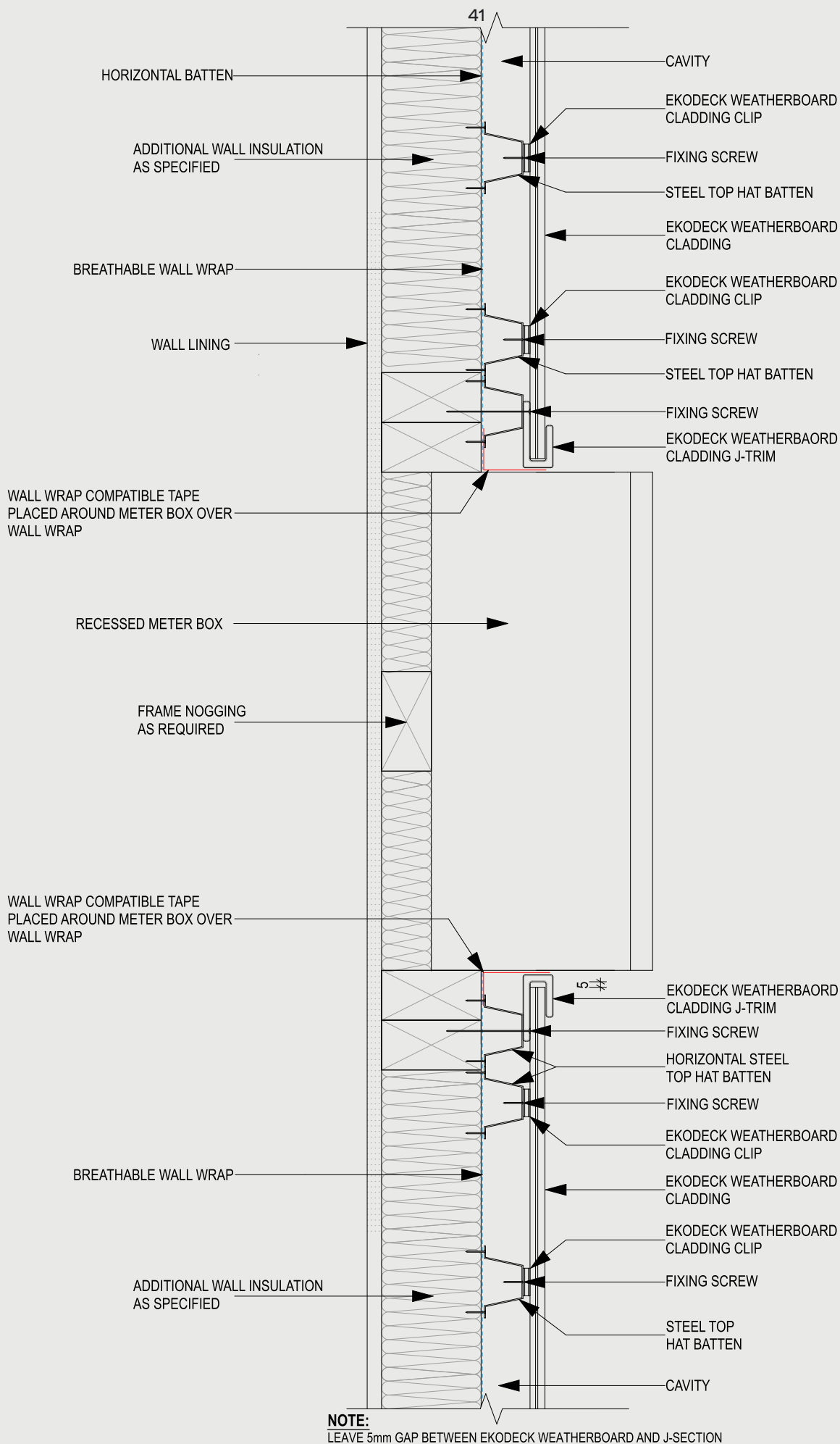


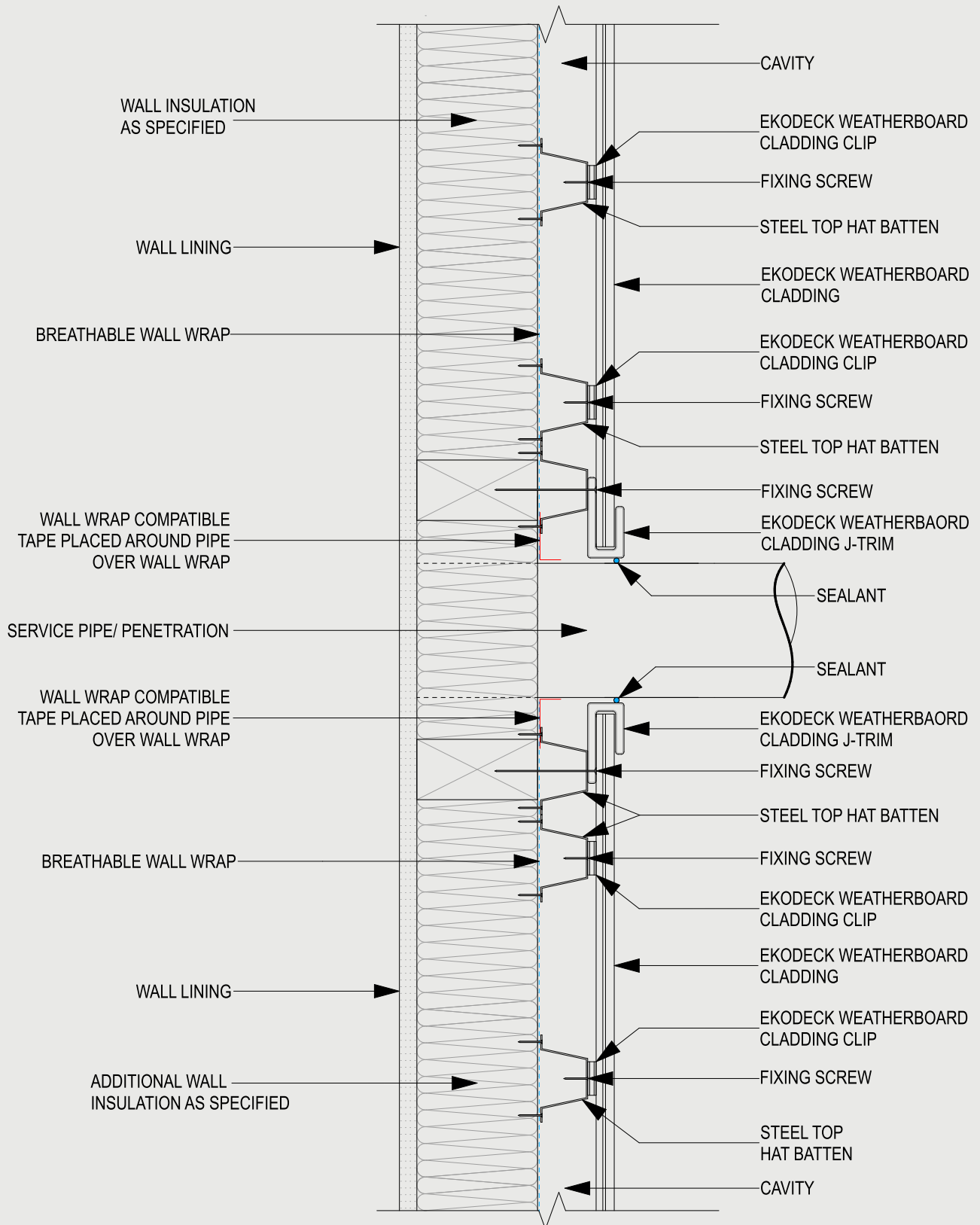
**NOTE:**

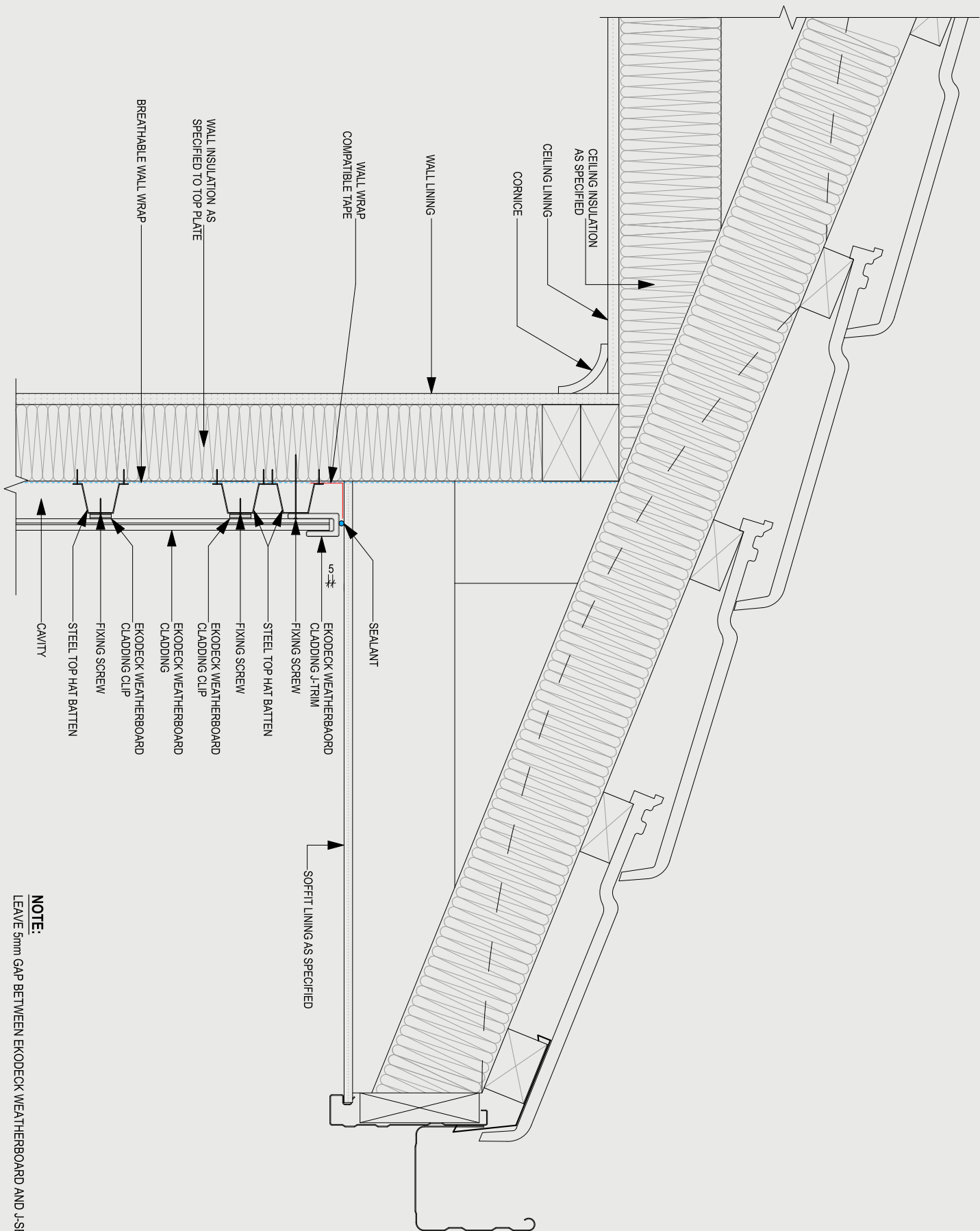
LEAVE 5mm GAP BETWEEN EKODECK WEATHERBOARD AND J-SECTION



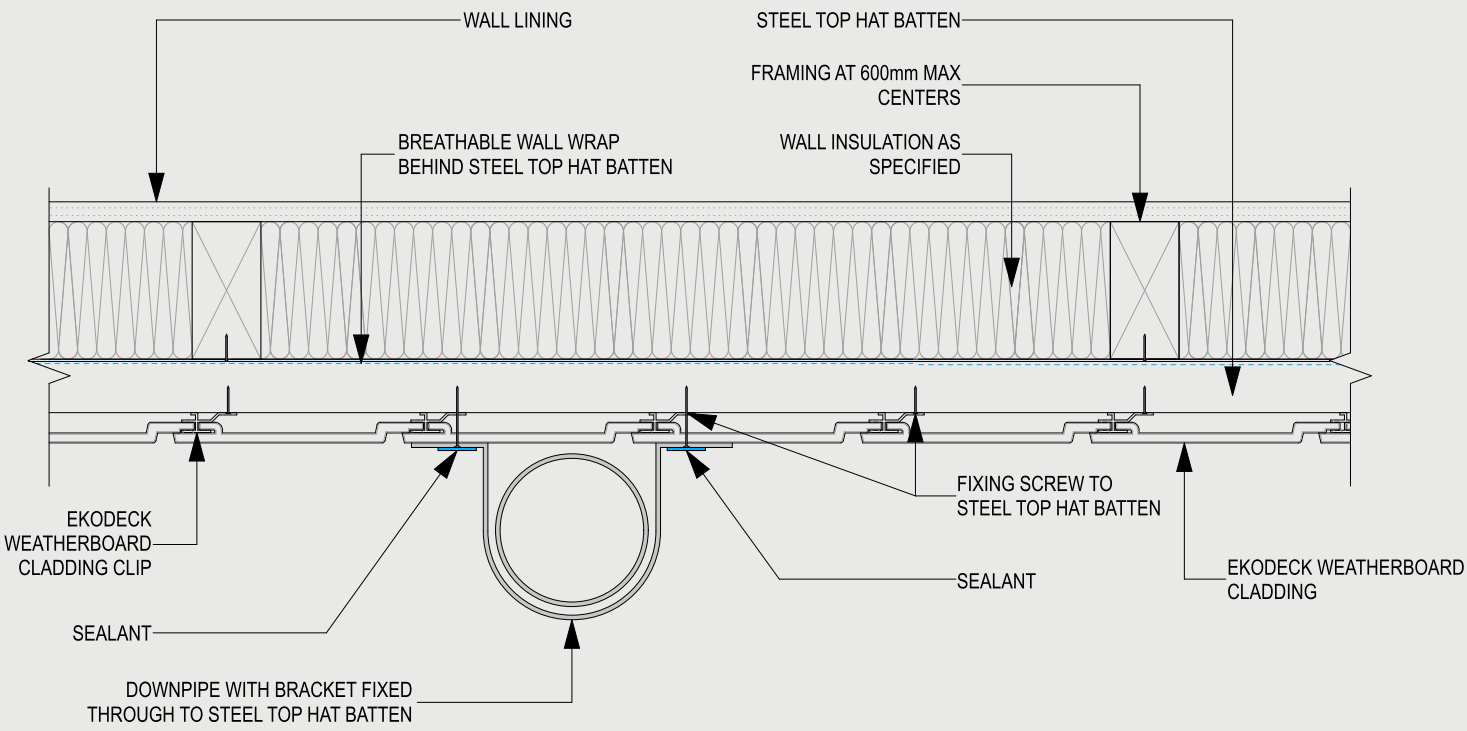
NOTE:
LEAVE 5mm GAP BETWEEN EKODECK WEATHERBOARD AND J-SECTION

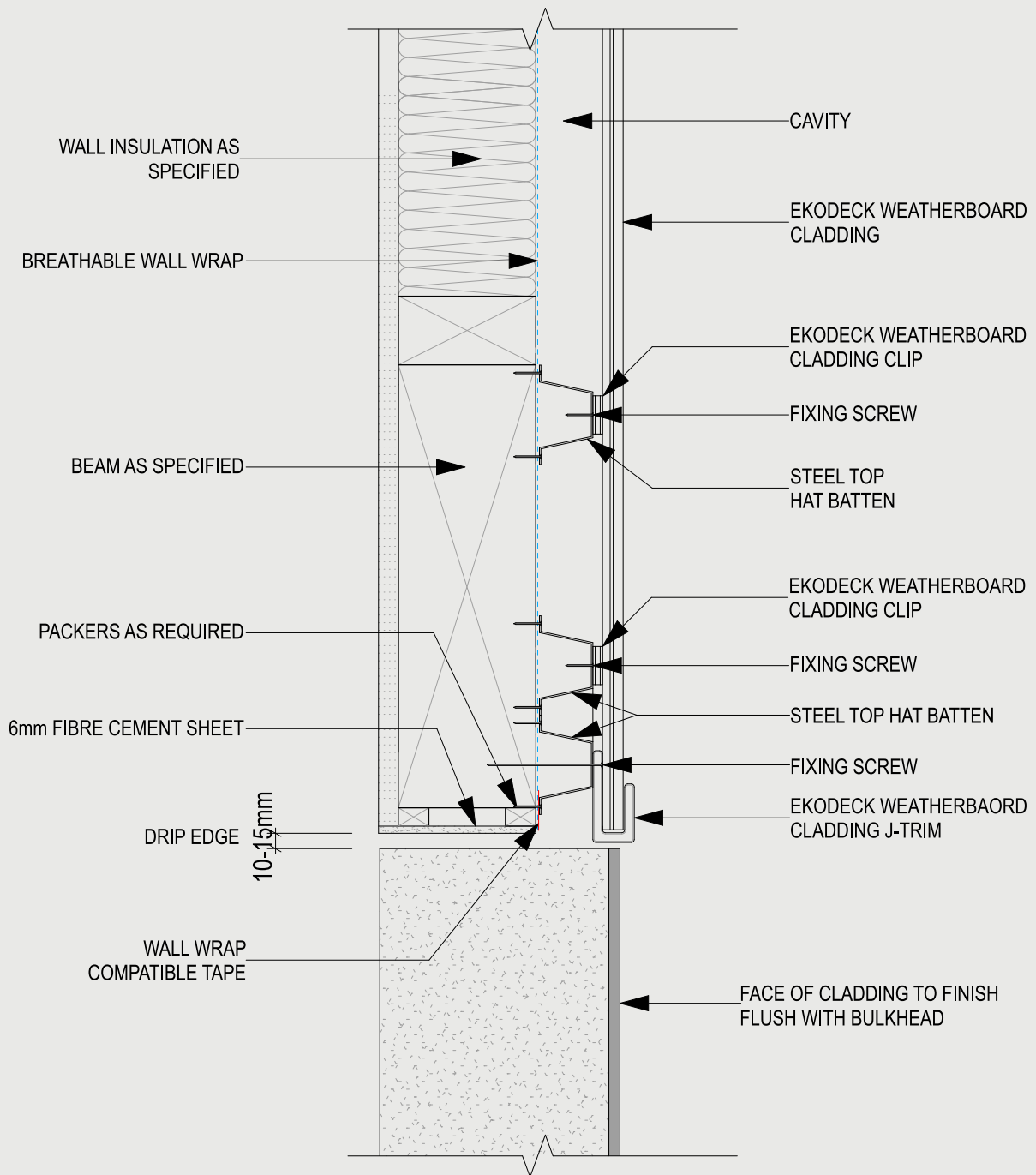


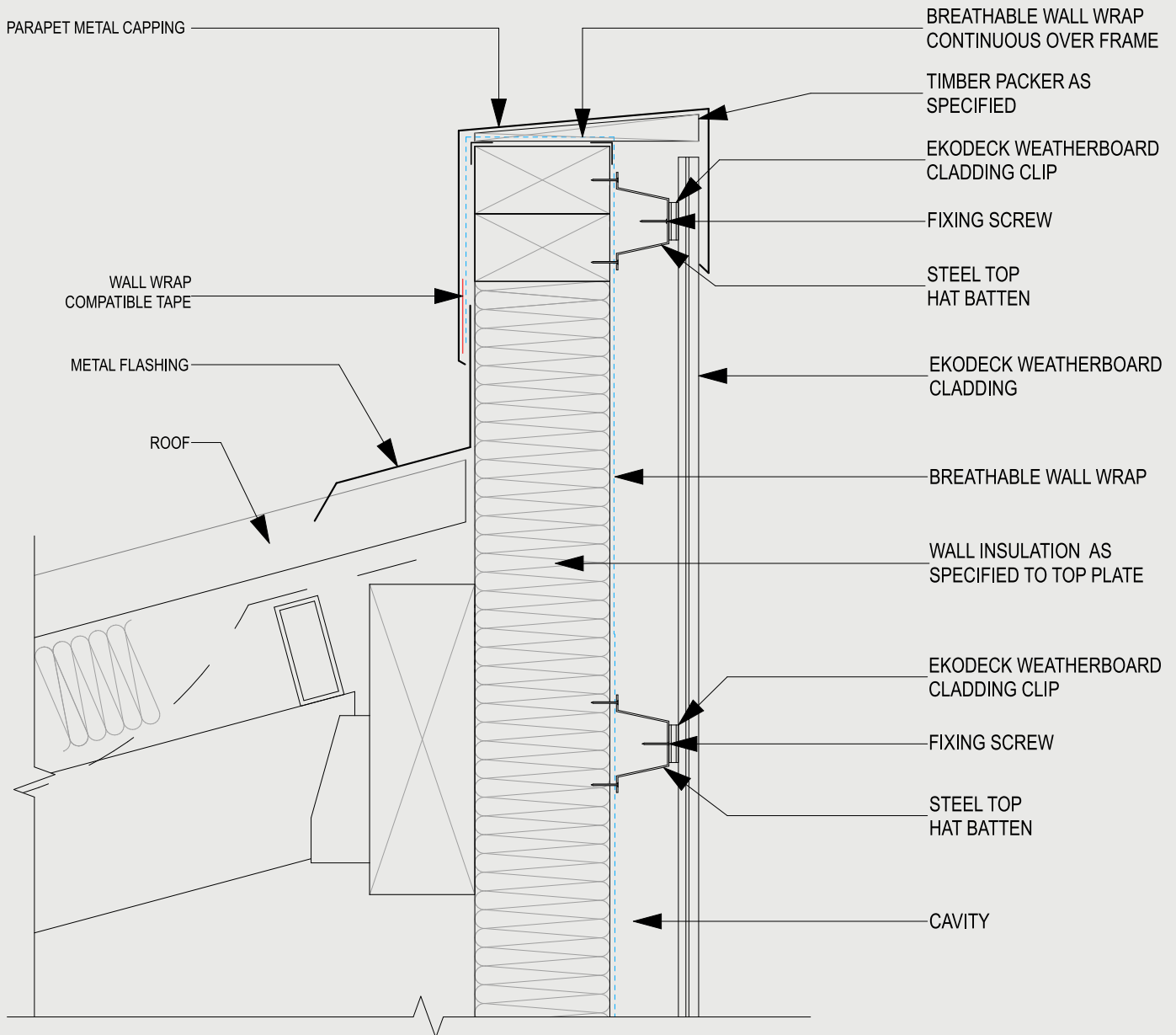


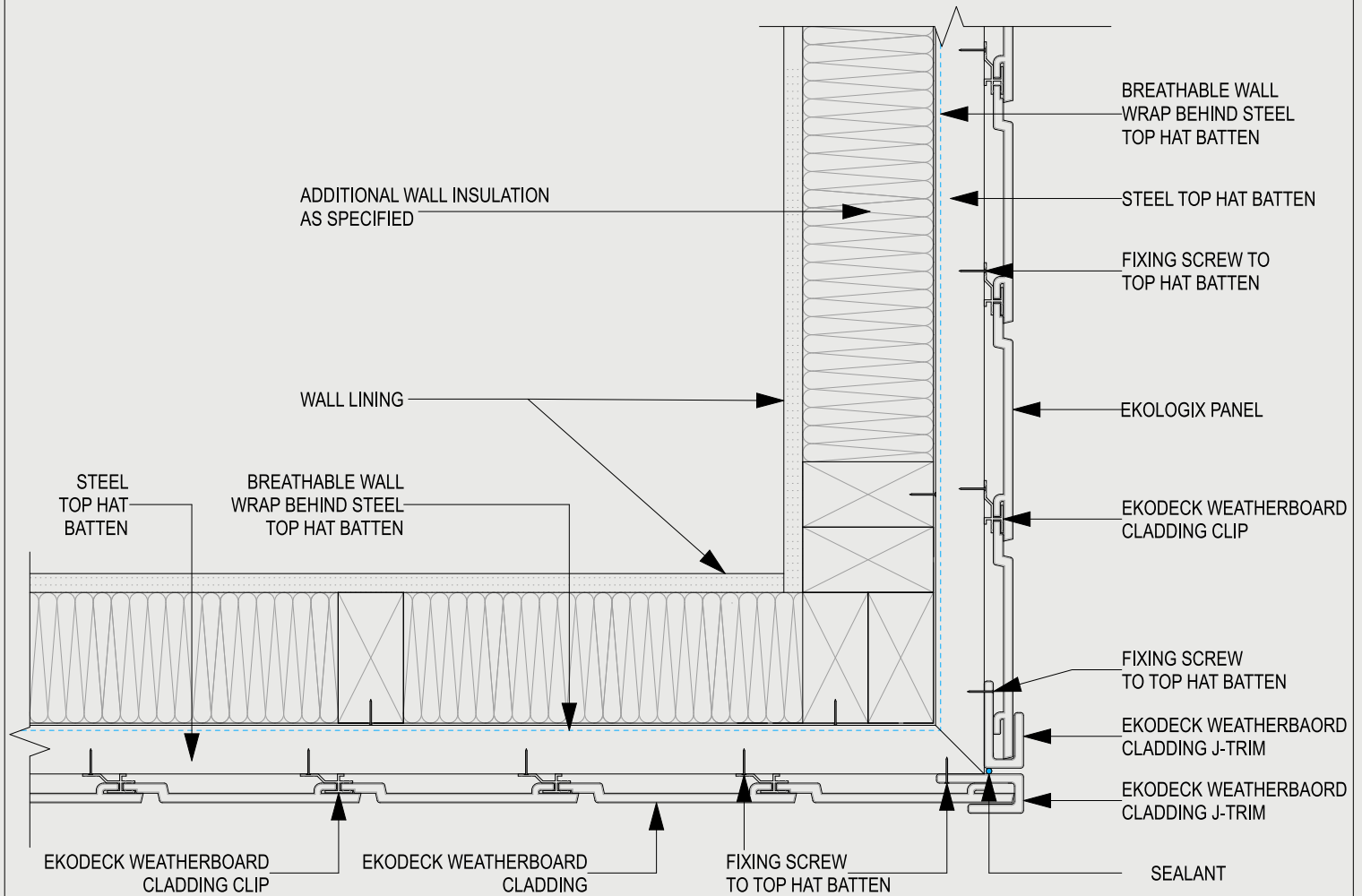


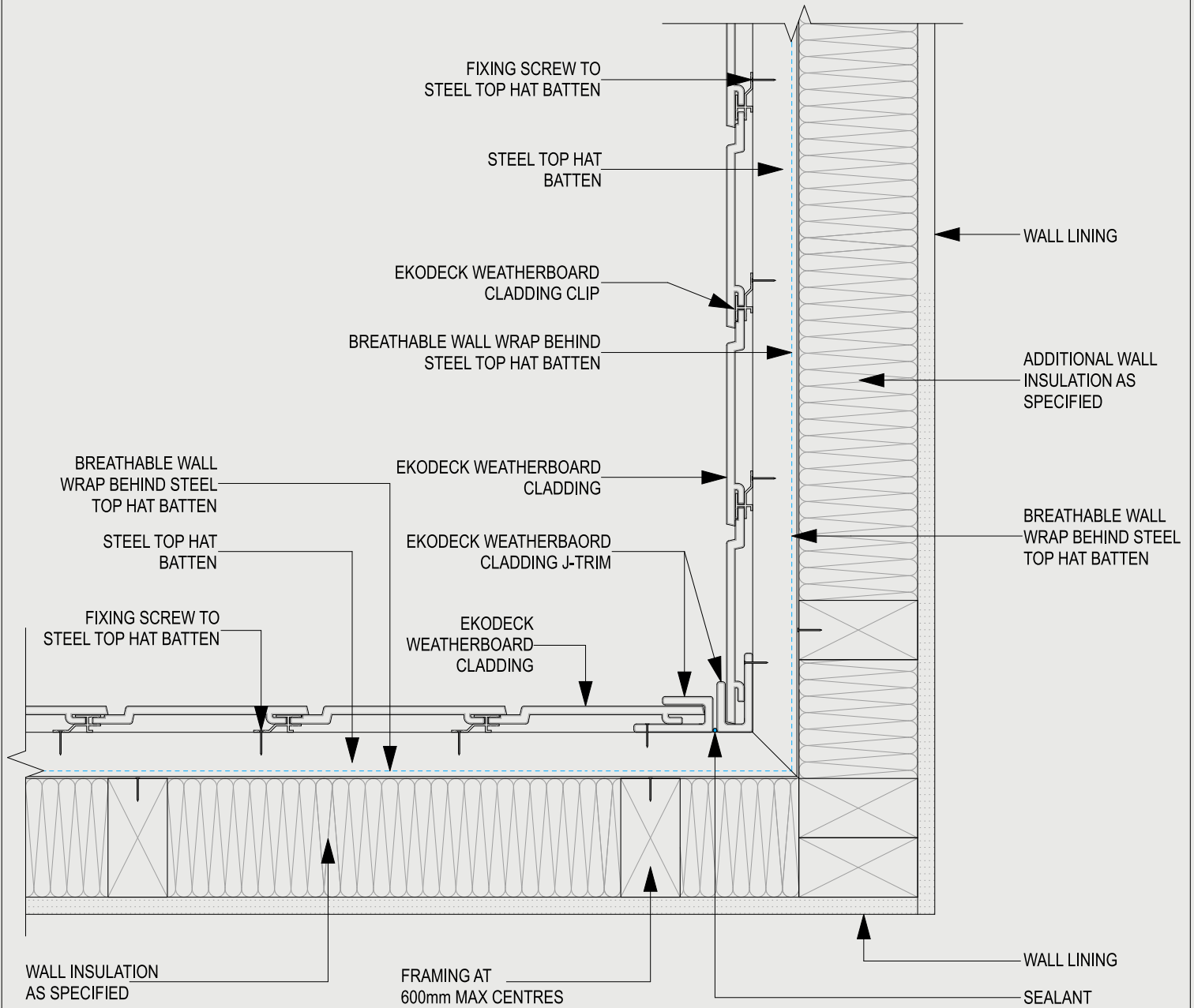
NOTE:
LEAVE 5mm GAP BETWEEN EKODECK WEATHERBOARD AND J-SECTION

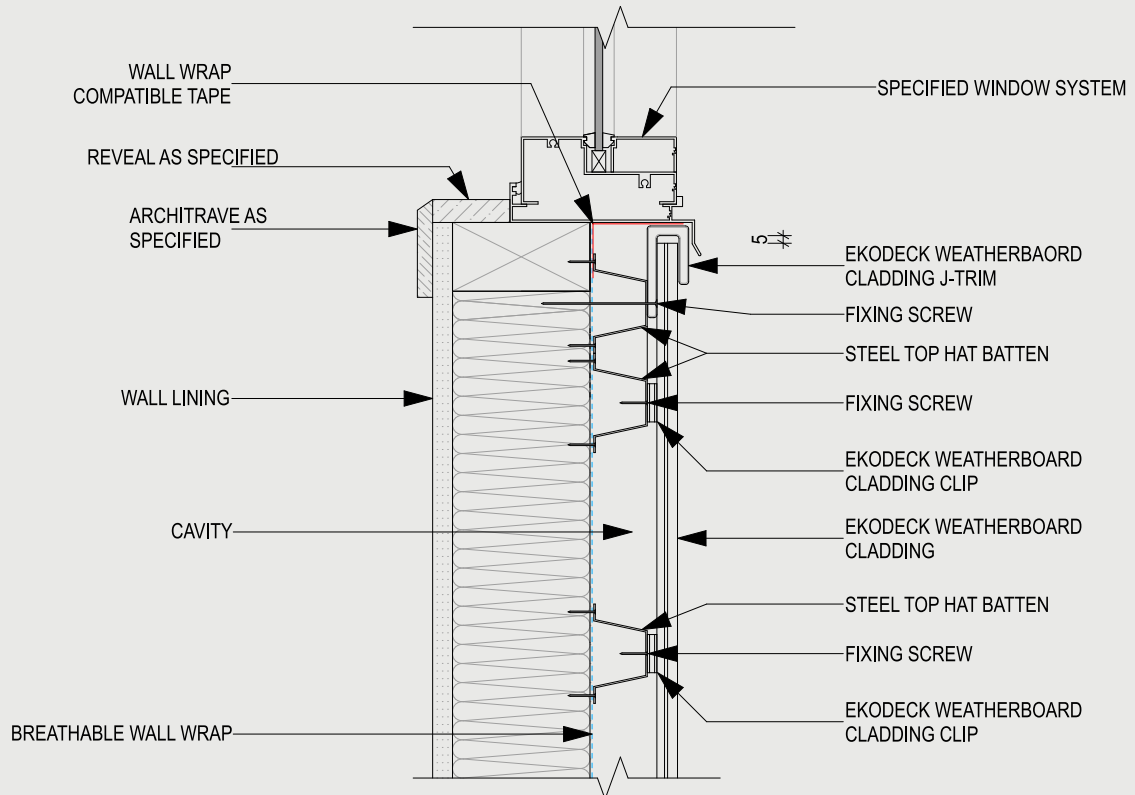
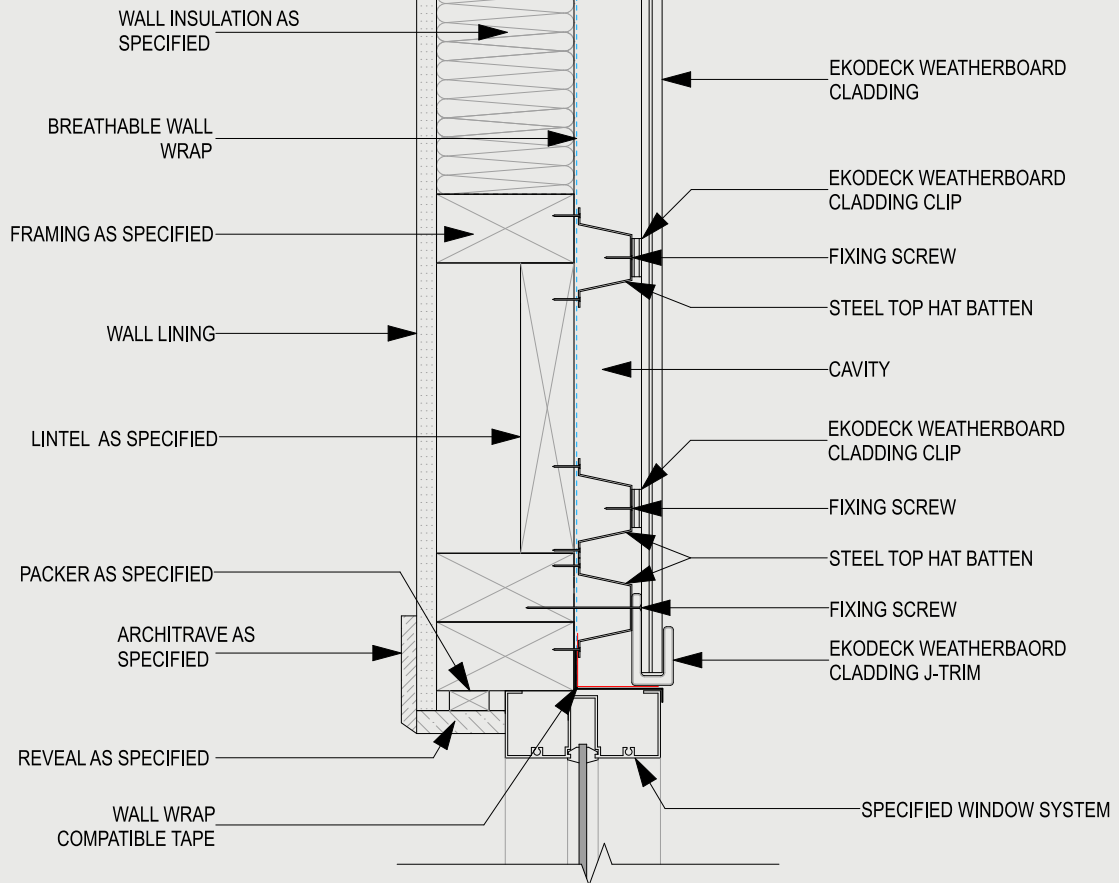




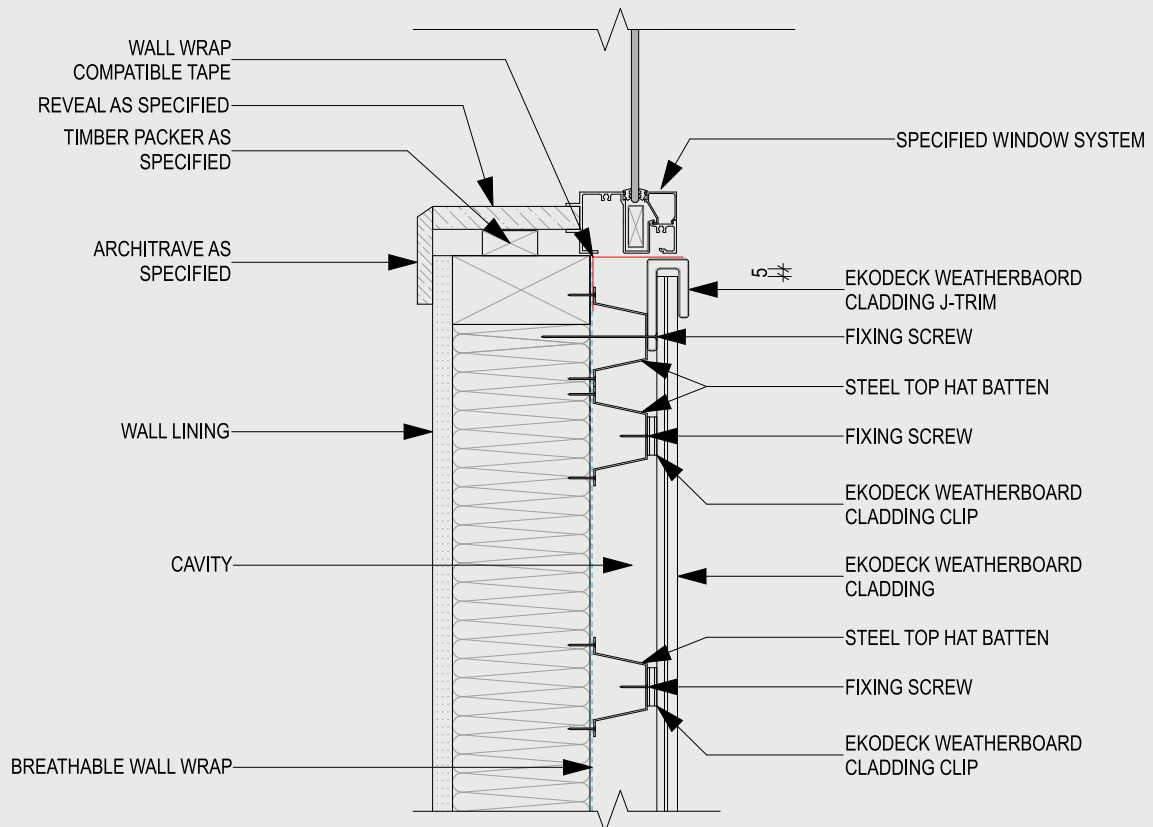
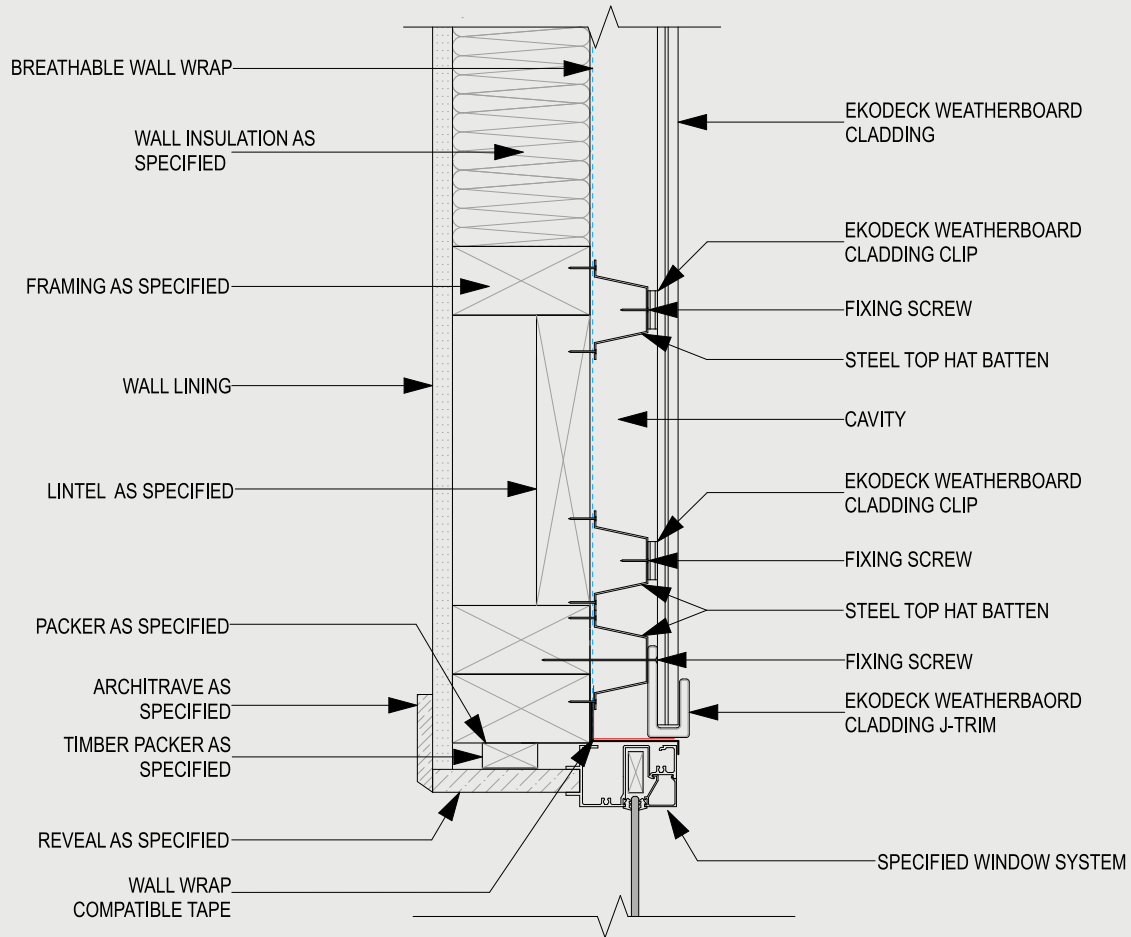


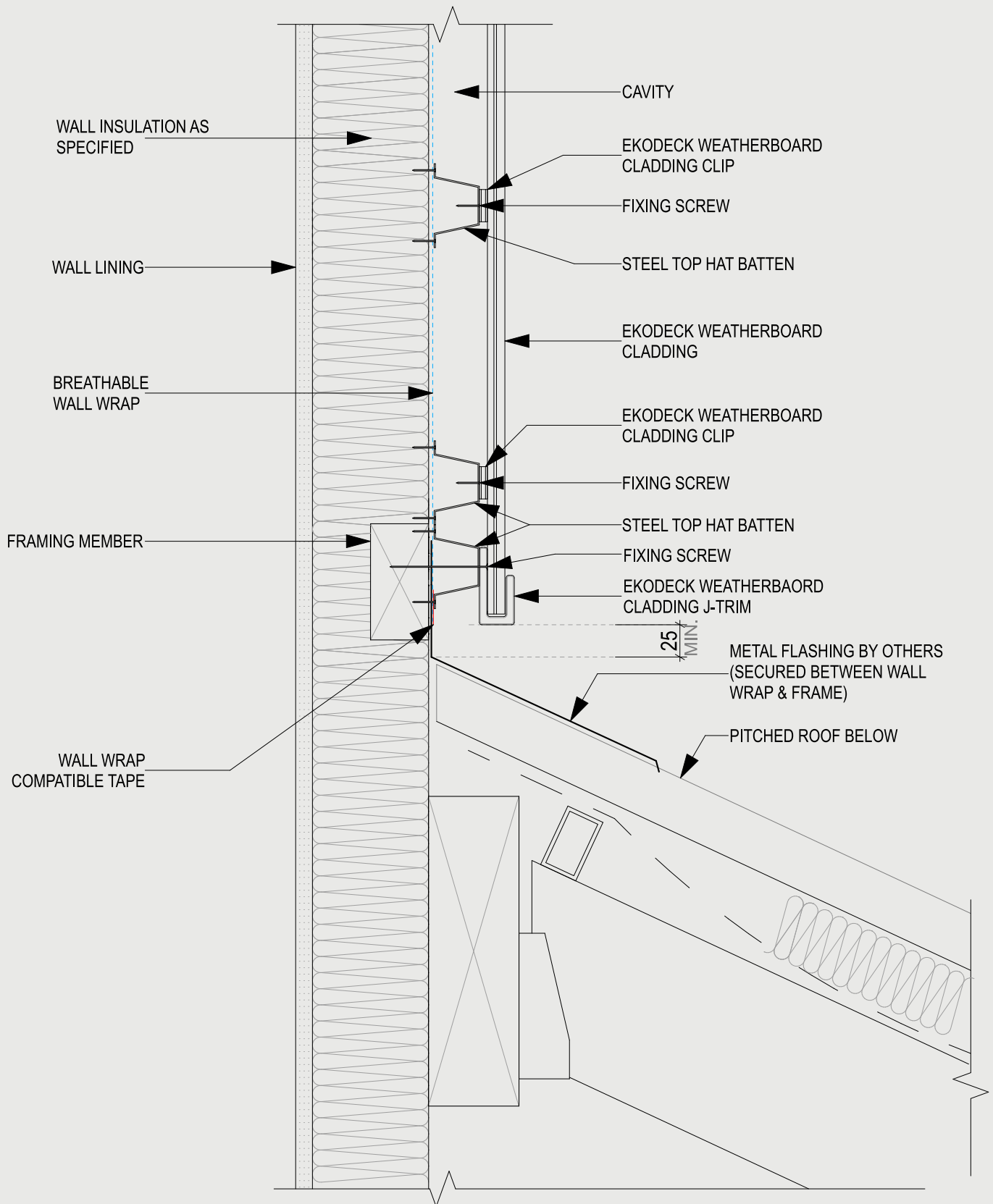


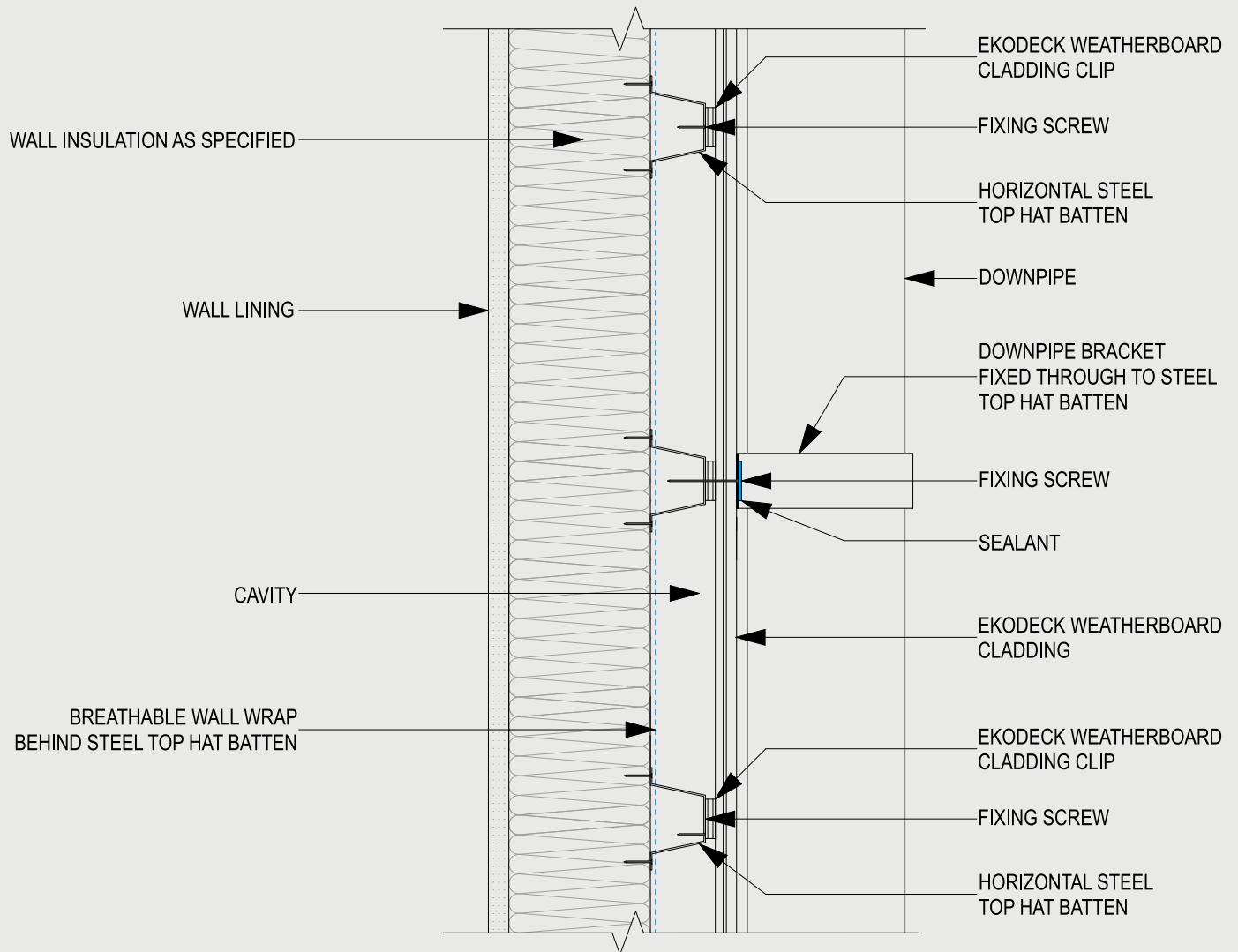




NOTE:
LEAVE 5mm GAP BETWEEN EKOLOGIX BOARD AND J-SECTION







Ekodeck® Cladding / Weatherboard

TECHNICAL GUIDE

7 Manufacturers Warranty

EKODECK WEATHERBOARD CLADDING WARRANTY MANUFACTURER'S WARRANTY (WARRANTY AGAINST DEFECTS)

1. AUSTRALIAN CONSUMER LAW (IF APPLICABLE)

- 1.1. Our goods come with guarantees that cannot be excluded under the Australian Consumer Law. You are entitled to a replacement or refund for a major failure and for compensation for any other reasonably foreseeable loss or damage. You are also entitled to have the goods repaired or replaced if the goods fail to be of acceptable quality and the failure does not amount to a major failure.
- 1.2. We offer this warranty in addition to your other legal rights and remedies. This warranty does not exclude, restrict or modify any condition, warranty, right or remedy implied by law, including the Australian Consumer Law which cannot be excluded, restricted or modified.

2. DEFINITIONS

- 2.1. The following terms have the following corresponding meaning:

"Australian Consumer Law" means Schedule 2 to the Competition and Consumer Act 2010 (Cth).

"Application" means either Commercial Application or Residential Application, as applicable.

"Authorised Purpose" means installation in accordance with Ekodeck installation or maintenance guidelines and use of the Product in a Residential Application or a Commercial Application.

"Ekodeck" means Ekologix Australia Pty. Ltd. ACN 133 471 619 or any trading entity of Ekodeck.

"Commercial Application" shall refer to any use of the Product, in accordance with Ekodeck maintenance guidelines, in any other circumstance that does not fall within the definition of Residential Application.

"Defect" means a defect in the design, the workmanship, or the materials or a failure of the whole or part of the Product.

"Defective Product" means a Product that suffers from a Defect.

"Purchaser" means any original end user of the Product who purchased the Product for an Authorised Purpose from an authorised Ekodeck distributor.

"Product" means the product to which this Manufacturer's Warranty is attached when originally purchased from an authorised Ekodeck distributor.

"Residential Application" shall refer to the use of the Product, in accordance with Ekodeck maintenance guidelines, at a natural person's domicile and where the Product was purchased solely for personal, domestic or household use.

"Term" means a maximum period of 25 years calculated from the date of purchase of the Product as stated on your receipt or invoice, subject to compliance with Ekodeck terms and this Warranty.

3. THE WARRANTY

- 3.1. This Warranty applies to the Purchaser that purchased the Product from the authorised Ekodeck distributor.
- 3.2. Ekodeck warrants to the Purchaser that the Product:
- 3.2.1. is of merchantable quality;
 - 3.2.2. is free from Defects;
 - 3.2.3. is fit for purpose;
 - 3.2.4. complies with legislative requirements at the time of purchase; and
 - 3.2.5. shall not significantly split or splinter.
- (Hereafter collectively referred to as the "Warranty").
- 3.3. The Warranty commences on the date that the Purchaser purchases the Product and expires on Twenty-five (25) calendar years from the date of purchase by a Purchaser of the Product used in a Residential Application or Commercial Application. (Hereafter collectively referred to as the "Warranty Period").

Ekodeck® Cladding / Weatherboard

TECHNICAL GUIDE

- 3.4. Ekodeck may, at its sole discretion, agree to the transfer of this warranty from Purchaser to a subsequent owner of the Product. Any transfer of this warranty is conditional upon the subsequent owner providing to Ekodeck proof of purchase of the Product.

4. WARRANTY CLAIM PROCEDURE

- 4.1. During the Warranty Period, the Purchaser must provide written notification together with supporting documents to Ekodeck within 30 days from the Purchaser discovering the Defect ("**Notice**").
- 4.2. The Notice must include:
- 4.2.1. a clear description of the alleged Defect;
 - 4.2.2. photographs of the alleged Defect;
 - 4.2.3. quantity of the Product claimed to be defective; and
 - 4.2.4. proof of original receipt (or other evidence displaying the date of purchase, with such further evidence to be to the reasonable satisfaction of Ekodeck).
- (Hereafter collectively referred to as a "**Claim**").
- 4.3. Upon receipt of the Claim, Ekodeck will contact the Purchaser as soon as practically possible to investigate the Claim, where Ekodeck will seek to establish the cause of the Claim.
- 4.4. If a Defect is found, Ekodeck may, at its sole discretion, repair or replace any Defective Product or part thereof of a Defective Product. If an identical part or component is not available, Ekodeck may repair or replace with parts and components of similar quality, grade and composition.
- 4.5. In addition to the rights of Ekodeck in clause 4.4 of this Warranty, Ekodeck may, at its sole discretion, elect to refund all or part of the purchase price paid by Purchaser for the Defective Product.

5. LIMITATIONS AND EXCLUSIONS TO WARRANTY

- 5.1. Where a Defect arises due to mould or mildew, the Warranty Period is limited to two (2) years from the Date of Purchase, irrespective of any other provision in this Warranty.
- 5.2. For the purpose of this Warranty, the following matters are excluded from the definition of a Defect:
- 5.2.1. improper installation, maintenance or handling of the Product and/or failure to abide by Ekodeck's installation or maintenance guidelines;
 - 5.2.2. use of the Product in an application not recommended by Ekodeck's guidelines and applicable codes or standards;
 - 5.2.3. movement, distortion, collapse or settling of the the supporting structure on which the Product is installed;
 - 5.2.4. any act of God (including flooding, earthquake, lightning and any other naturally occurring environmental or other disaster);
 - 5.2.5. staining from foreign substances (including mould, mildew, dirt, grease, oil and any other substance);
 - 5.2.6. improper storage, abuse or neglect of the Product by Purchaser;
 - 5.2.7. natural and or reasonable and or gradual loss or change of colour in the Product;
 - 5.2.8. overloading;
 - 5.2.9. ordinary wear and tear; and
 - 5.2.10. any natural colour variance in the Product.
- 5.3. This Warranty does not extend to cover:
- 5.3.1. costs associated to remove any Defective Product from the Purchaser's premises, or the location of the Product;
 - 5.3.2. any charges incurred by the Purchaser in returning any defective product to Ekodeck or in notifying Ekodeck of the alleged defective product;
 - 5.3.3. costs associated with installing any replacement product;
 - 5.3.4. costs associated with making a claim under this Warranty, including costs such as postage and handling; and
 - 5.3.5. any other reasonably foreseeable costs incurred.

Ekodeck® Cladding / Weatherboard

TECHNICAL GUIDE

- 5.4. The maximum value of any Claim of any one claim or total of all claims made by a Purchaser with respect to the purchase of the Products is limited to the dollar equivalent of the percentages referred to in the below table:

| Maximum Value of all or any Claim Amount | Claim Period - Any Application |
|--|--|
| 100% | From date of Purchase to end of the 15th year* |
| 90% | To the end of the 16th year |
| 80% | To the end of the 17th year |
| 70% | To the end of the 18th year |
| 60% | To the end of the 19th year |
| 50% | To the end of the 20th year |
| 40% | To the end of the 21st year |
| 30% | To the end of the 22nd year |
| 20% | To the end of the 23rd year |
| 10% | To the end of the 24th year |
| 5% | To the end of the 25th year |

* If the Product was purchased on the 1st of July 2023, the 0-15 years Claim Period would run from 1 July 2023 to 30 June 2038.

6. GENERAL CONDITIONS

- 6.1. Ekodeck or any of its affiliated employees or agents will not be liable for any direct, indirect, special or consequential loss or damage arising out of the use of, or handling of any Ekodeck Product whatsoever, including any direct, indirect, special or consequential loss or damage suffered as a result of the negligence of Ekodeck, except those which cannot be excluded by law.

7. SEVERABILITY

- 7.1. If any term of this Warranty is held to be illegal, void or unenforceable in a jurisdiction, then:
- 7.1.1. where the term can be read down so as to give it a valid and enforceable operation of a partial nature, it must be read down to the extent necessary to achieve that result, and
- 7.1.2. in any other case the term must be severed from this Warranty for that jurisdiction in which event the remaining terms operate as if the severed provision had not been included.

8. CONTACT INFORMATION

- 8.1. Ekodeck can be contacted at:

Business address: Unit 1, 20-26 Sabre Drive,
Port Melbourne, Victoria, Australia 3207

Phone: +613 9639 777 4

Email: info@ekodeck.com.au