

AS1530.1
ISO9705

AS1530.3
AS3837

AS1530.4
UBC26-3

ASKIN Roofing Metric

Standard Details



	A	B	C	D	E	F	G	H	I	J	K	L	M	N	O	P	
1																	1
2																	2
3																	3
4																	4
5																	5
6																	6
7																	7
8																	8
9																	9
10																	10



ROOFING - METRIC

001	PANEL TO PANEL CONNECTION DETAIL	REV: -
002	PANEL PROFILES	REV: -
100	FLASHING & GUTTER CONNECTION DETAILS	REV: -
101	FLASHING & GUTTER CONNECTION DETAILS	REV: -
102	FLASHING & GUTTER CONNECTION DETAILS	REV: -
103	INTERNAL BOX GUTTER CONNECTION DETAILS	REV: -
104	INTERNAL BOX GUTTER & PARAPET CONNECTION DETAILS	REV: -
105	INTERNAL BOX GUTTER & PARAPET CONNECTION DETAILS	REV: -
106	INTERNAL BOX GUTTER & PARAPET CONNECTION DETAILS	REV: -
110	RIDGE FLASHING CONNECTION DETAILS	REV: -
200	SIDE PARAPET CONNECTION DETAILS	REV: -
201	SIDE PARAPET CONNECTION DETAILS	REV: -
300	END LAP CONNECTION DETAILS	REV: -
301	END LAP CONNECTION DETAILS	REV: -
302	END LAP & STEP JOINT CONNECTION DETAILS	REV: -
303	END LAP & STEP JOINT CONNECTION DETAILS	REV: -
400	ROOF PENETRATION CONNECTION DETAILS	REV: -
401	ROOF PENETRATION CONNECTION DETAILS	REV: -
402	ROOF PENETRATION CONNECTION DETAILS	REV: -
403	ROOF PENETRATION CONNECTION DETAILS	REV: -
404	ROOF PENETRATION CONNECTION DETAILS	REV: -
500	AMPELITE SKYLIGHT SYSTEM DETAILS	REV: -

GENERAL NOTES

1. ASKIN PERFORMANCE PANELS DRAWINGS SHALL BE USED IN CONJUNCTION WITH PROJECT SPECIFICATIONS AND ALL OTHER RELEVANT TRADE DRAWINGS.

2. FIXING TYPES & CENTRES ARE NOMINATED AS A GENERAL APPLICATION AND MUST BE INCLUDED IN THE ENGINEERED DESIGN.

3. BY APPROVING THE ASKIN SHOP DRAWINGS, THE CLIENT / CONTRACTOR / ARCHITECT / DESIGNER WARRANTS THAT THEY HAVE REVIEWED THE SHOP DRAWINGS, COORDINATED THE SHOP DRAWINGS WITH ALL RELATED TRADES, VERIFIED ALL DIMENSIONS WITH ACTUAL FIELD CONDITIONS, RESOLVED ANY CLASHES AND REPORT ANY DISCREPANCIES BETWEEN EACH SET OF DRAWINGS AND WITHIN EACH SET OF DRAWINGS, CONFIRMED QUANTITIES AND PERFORMANCE REQUIREMENTS AND FOR FABRICATION PROCESSES, PRIOR TO THE MANUFACTURE AND INSTALLATION OF WORKS.

4. WHEN SHOP DRAWINGS ARE REQUIRED, NO PART OF THE STRUCTURE OR COMPONENT SHALL BE CONSTRUCTED WHERE RELATED TO THE SHOP DRAWINGS UNTIL AFTER THE SHOP DRAWINGS HAVE BEEN REVIEWED AND APPROVED. IT IS THE BUILDERS RESPONSIBILITY TO PLAN AHEAD AND ALLOW TIME FOR SHOP DRAWING CREATION, REVIEW, REVISE AND APPROVAL. THE GENERAL CONTRACTOR AND ALL SUBCONTRACTORS SHALL BE RESPONSIBLE FOR ANY WORK NOT IN CONFORMANCE WITH THE PLANS OR IN CONFLICT WITH ANY CODE.

5. ALL CONSTRUCTION SHALL COMPLY WITH THE MOST STRINGENT REQUIREMENTS OF ALL CURRENT APPLICABLE CITY, COUNTRY, STATE AND FEDERAL LAWS, RULES, CODES, ORDINANCES AND REGULATIONS. IF THE GENERAL CONTRACTOR OR ANY SUBCONTRACTOR PERFORMS ANY WORK IN CONFLICT WITH THE ABOVE MENTIONED LAWS, RULES, CODES, ORDINANCES AND REGULATIONS, THEN THE CONTRACTOR IN VIOLATION SHALL BEAR ALL COSTS OF REPAIR ARISING OUT OF THE NON-CONFORMING WORK.
6. SUBSTITUTION OF SPECIFIC MATERIALS OR PRODUCTS LISTED ON THE DRAWINGS SHALL NOT BE MADE WITHOUT THE WRITTEN AUTHORISATION BY ASKIN PERFORMANCE PANELS ENGINEER.

7. BEFORE COMMENCING ANY WORK CONSIDERED A VARIATION, ASKIN AND OR ITS SITE AGENT REQUIRES THE VARIATION TO BE APPROVED IN WRITING PRIOR TO COMMENCEMENT OF SUCH WORK. VARIATIONS INCLUDE BUT ARE NOT LIMITED TO ADDITION, DELETION OR CHANGES IN THE SCOPE OF WORKS DESCRIBED BY THE QUOTATION / DRAWINGS.

8. DIMENSIONS TAKE PRECEDENCE OVER SCALED MEASUREMENTS. UNIT OF MEASUREMENT ARE IN MILLIMETERS. DO NOT SCALE OFF DRAWINGS. DETAILS AND SECTIONS ON THE DRAWINGS ARE SHOWN AT SPECIFIC LOCATIONS AND ARE INTENDED TO SHOW GENERAL REQUIREMENTS THROUGHOUT.

9. DETAILS LABELED 'TYPICAL' OR 'STANDARD' ON THE DRAWINGS SHALL APPLY TO ALL SITUATIONS OCCURRING ON THE PROJECT THAT ARE THE SAME OR SIMILAR TO THOSE SPECIFICALLY DETAILED. THE APPLICABILITY OF THE DETAIL TO ITS LOCATION ON THE DRAWINGS CAN BE DETERMINED BY THE TITLE OF THE DETAIL. SUCH DETAILS SHALL APPLY WHETHER OR NOT THEY ARE REFERENCED AT EACH LOCATION.

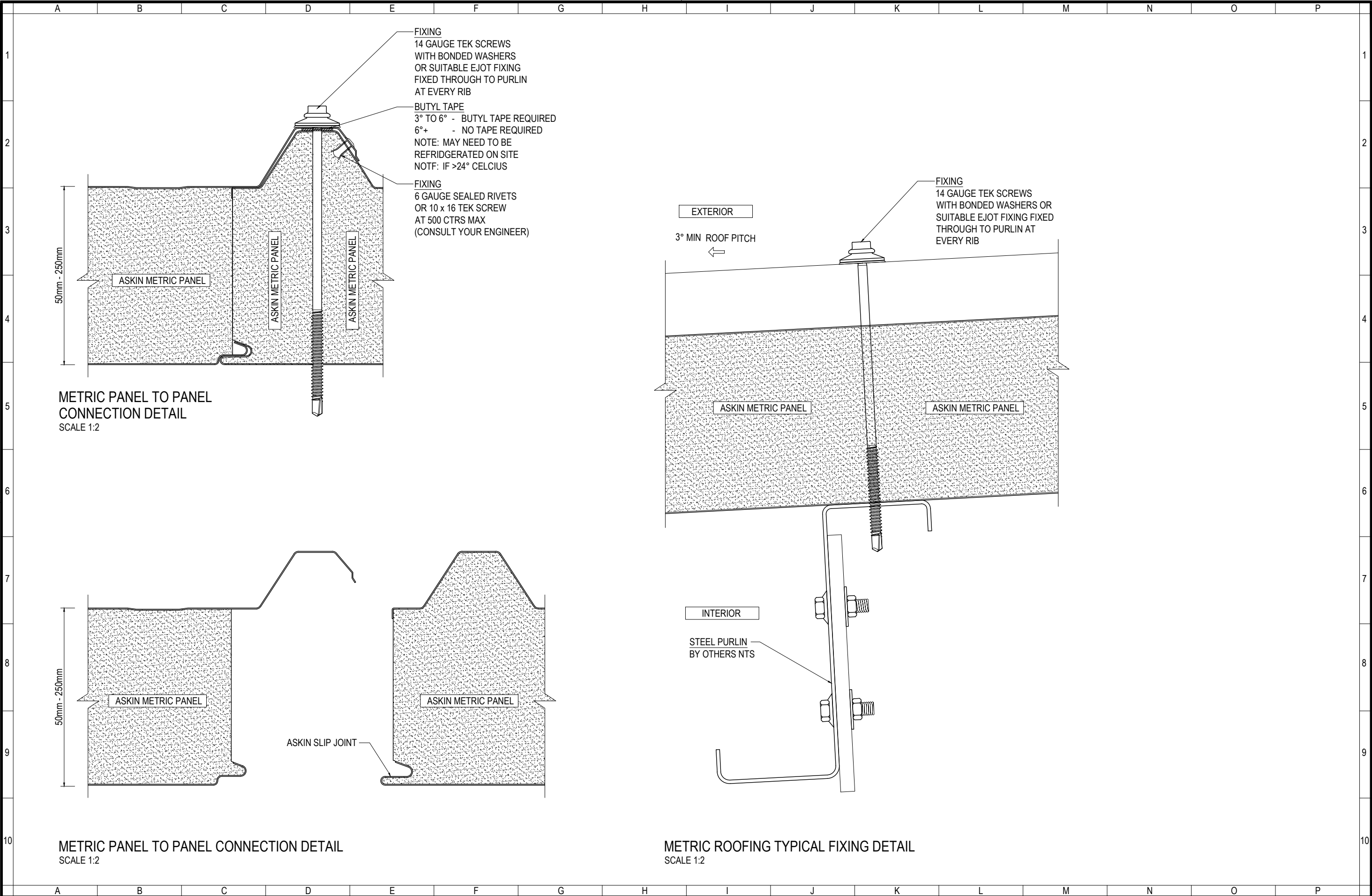
10. ALL ASKIN PANEL DIMENSIONS, LOCATIONS, HEIGHTS & SET DOWNS TO BE MEASURED AND CONFIRMED ON SITE PRIOR TO PANEL ORDER.

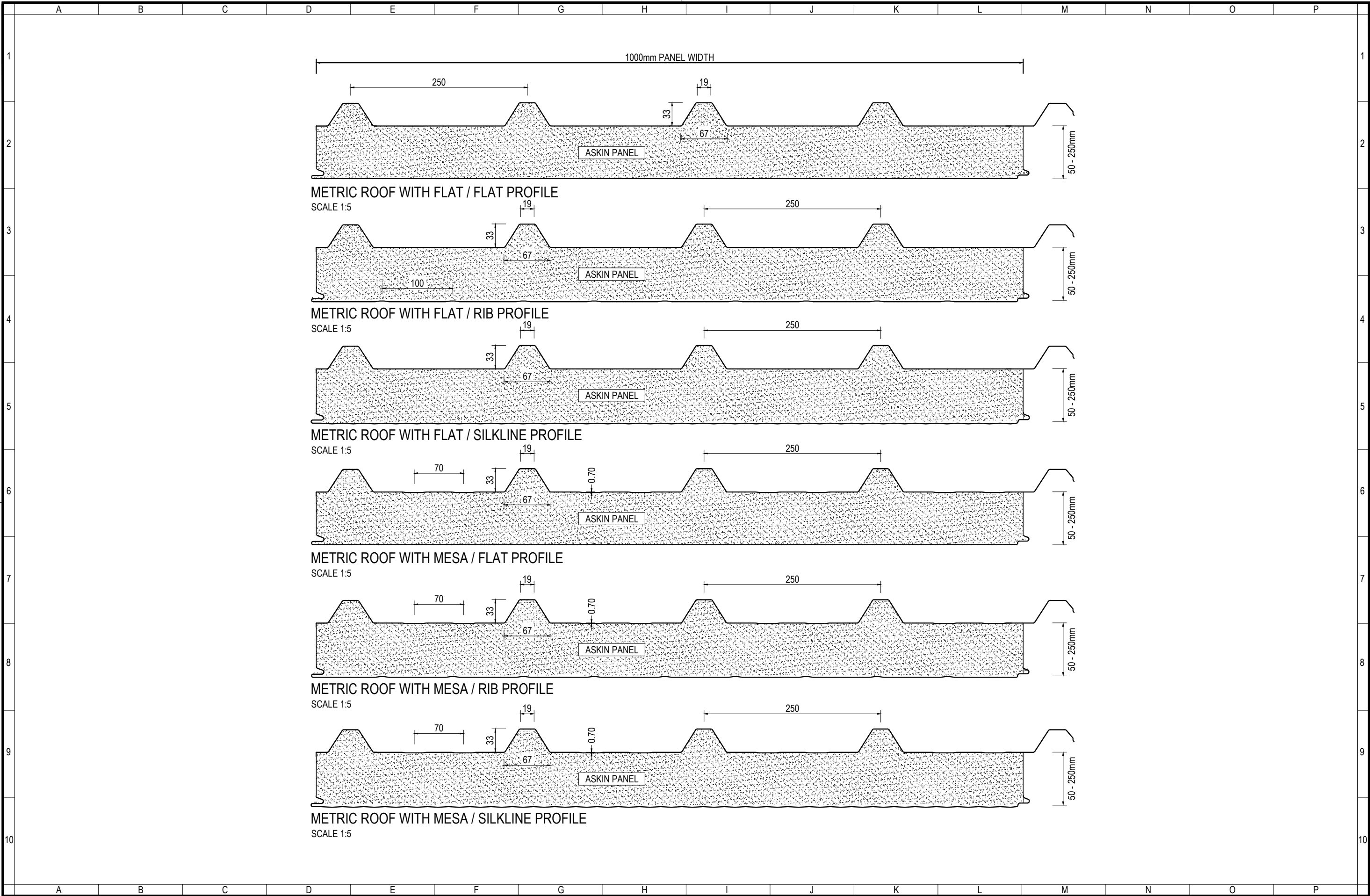
11. AMOUNT OF FIXINGS AND LOCATIONS TO BE ENGINEERED AND APPROVED PRIOR TO PANEL ORDER. ANY CLASHES ARE TO BE RESOLVED AND DRAWINGS TO BE SIGNED OFF PRIOR TO COMMENCEMENT OF WORKS.

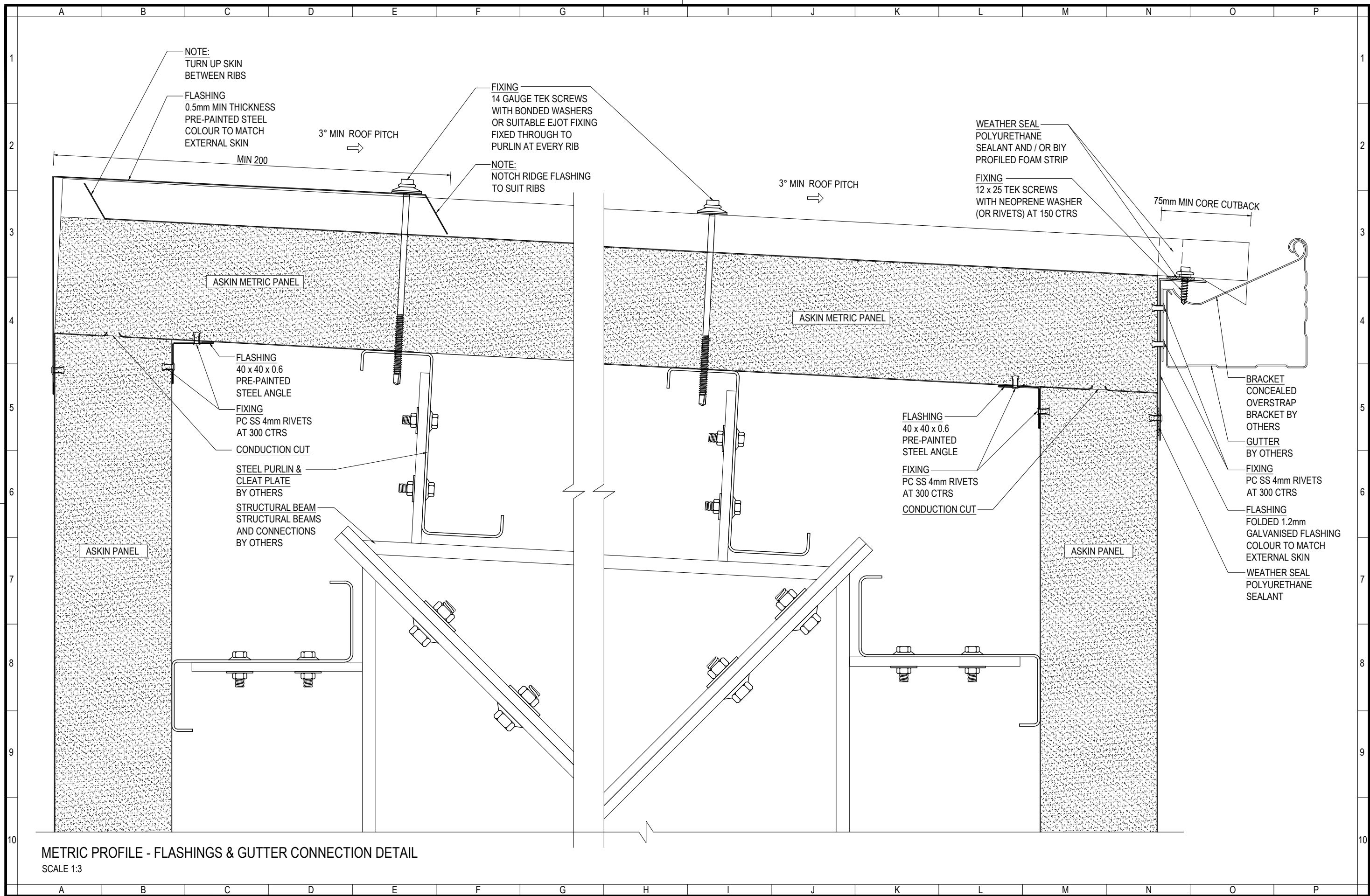
PLEASE NOTE THAT THESE DETAILS ARE RELEVANT FOR ALL CORE MATERIAL TYPES

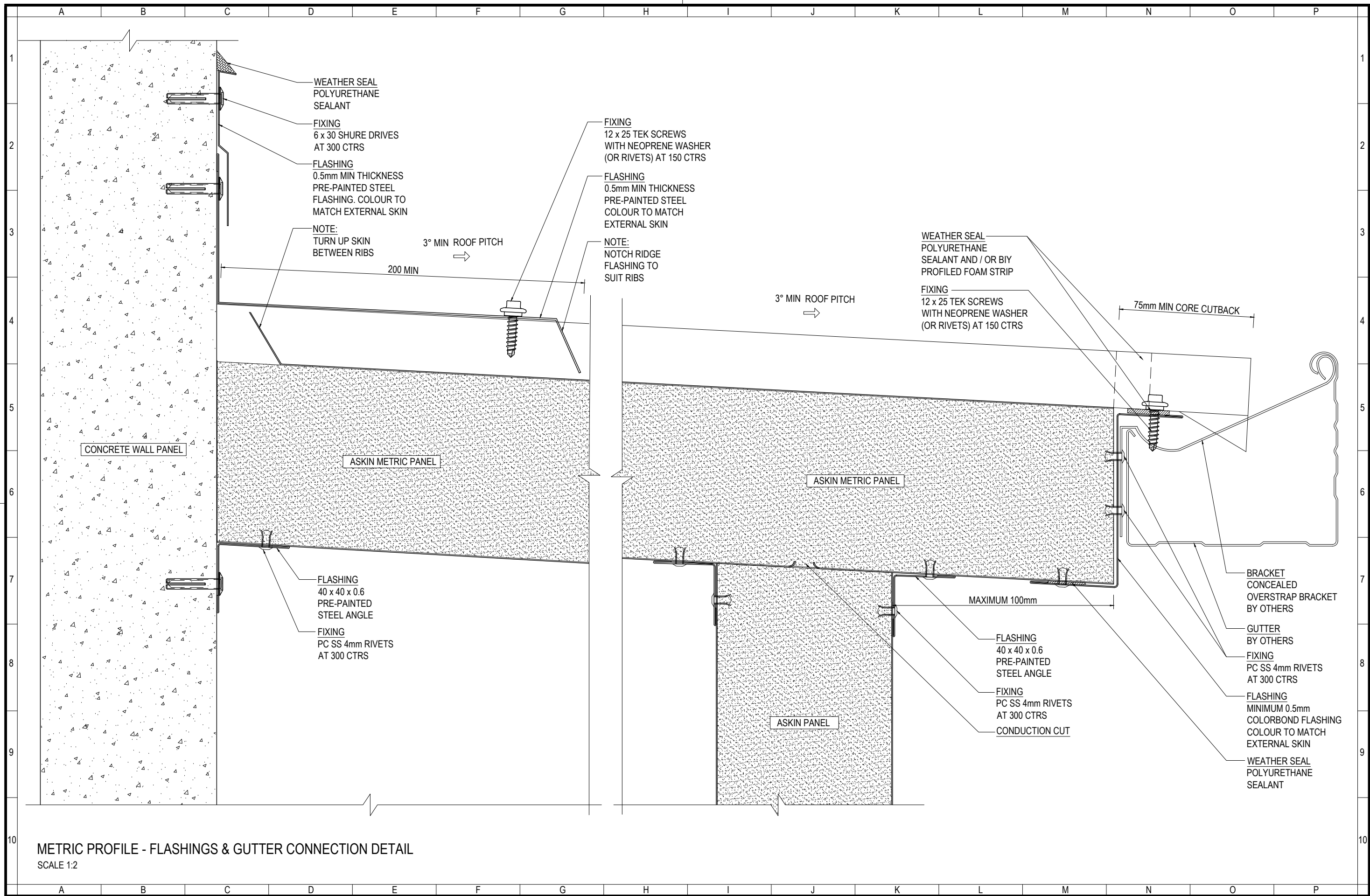


 www.askin.net.au VIC P : 03 8769 4816 WA P : 08 9249 4022 SA P : 08 8252 7188 QLD P : 07 3718 9500 NSW P : 02 8825 2598 NT P : 08 8252 7188	PROJECT: ROOFING - METRIC GENERAL NOTES & INDEX										Revision		Checked By A SHANNON	Scale NTS
											-		Drawn By R VORWERK	Sheet size A3
											-		Issue date 26.09.2022	Revision -
											-		Drawing No. ROOFMET - INDEX	

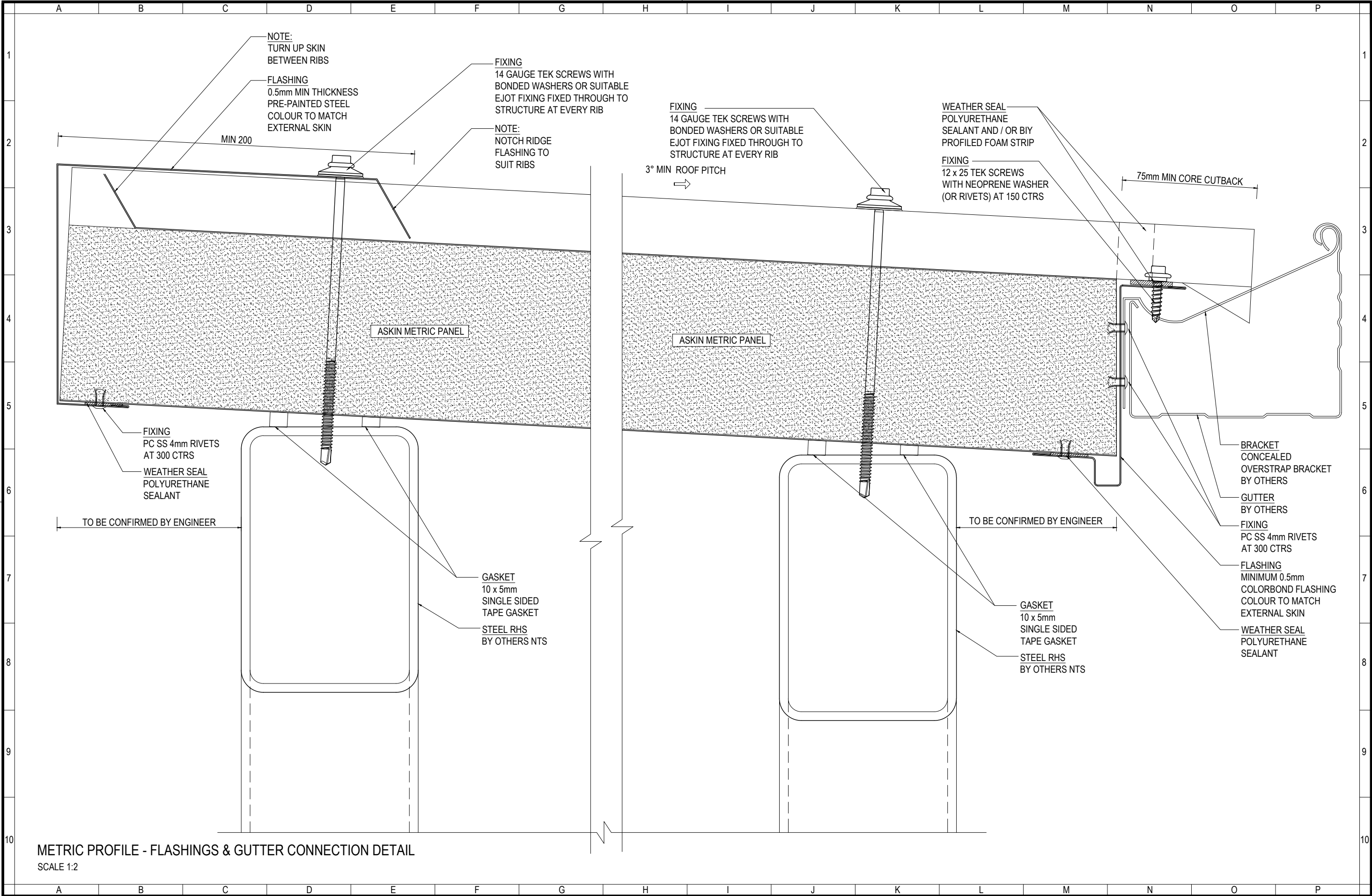




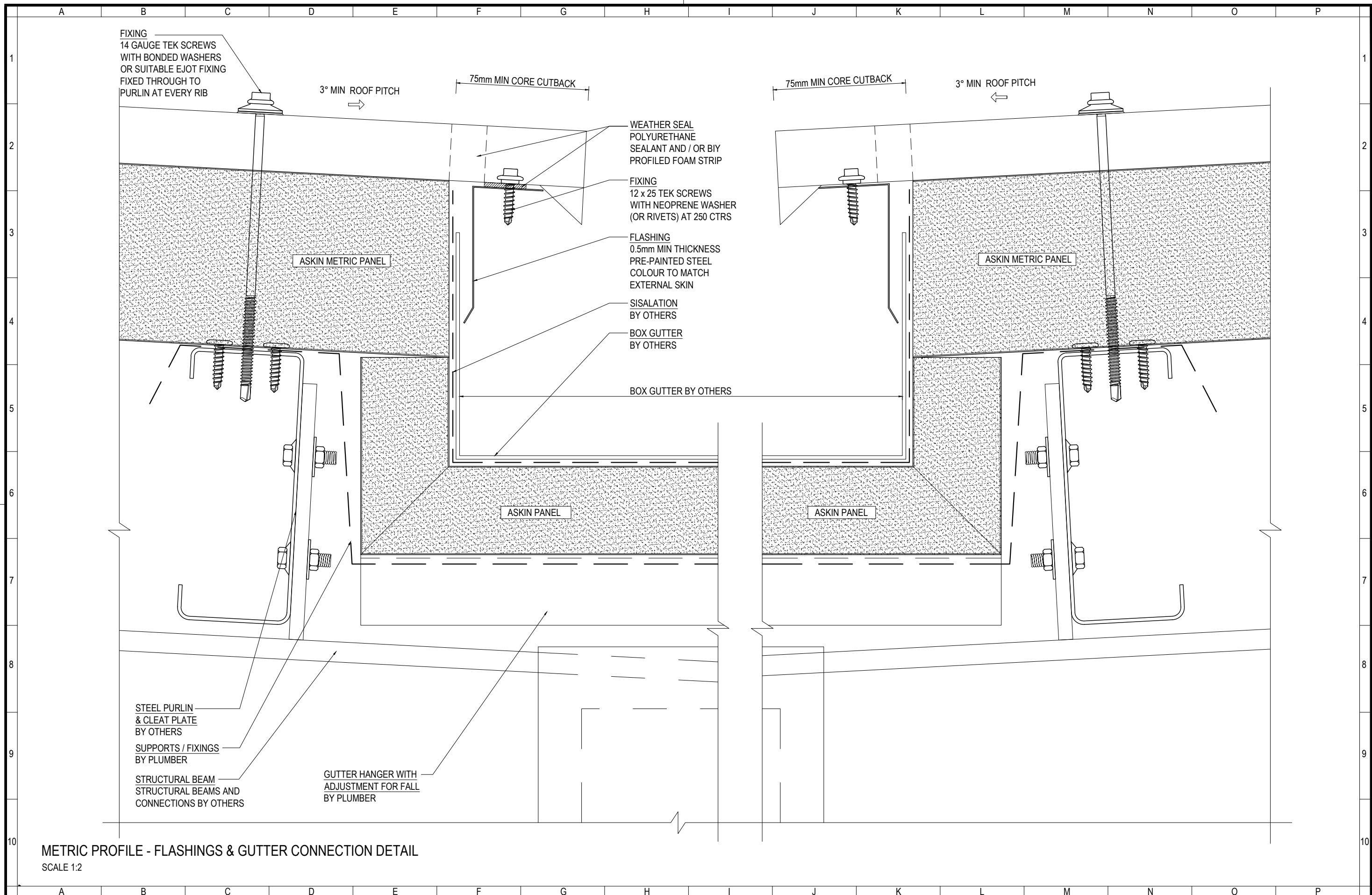


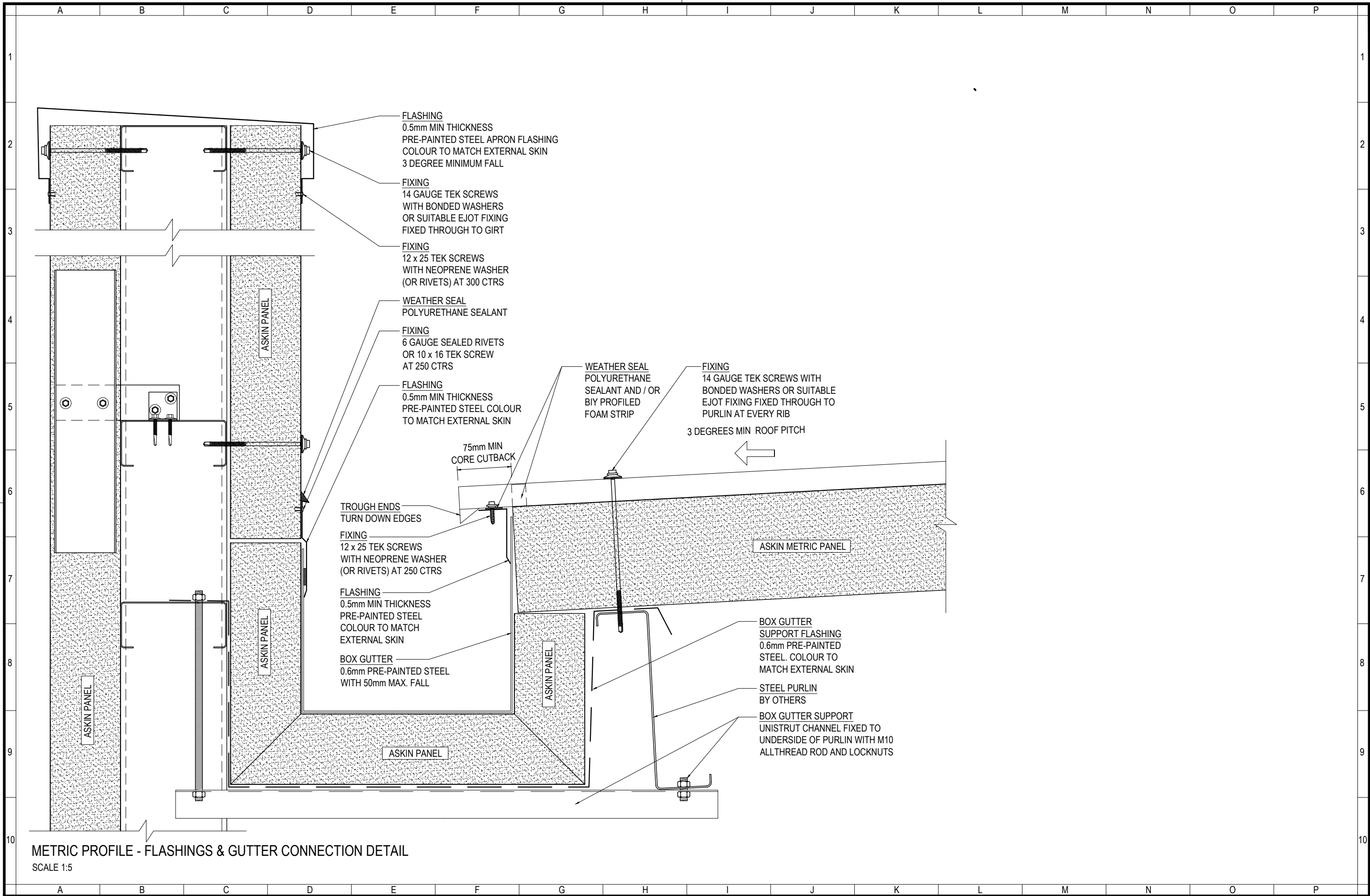


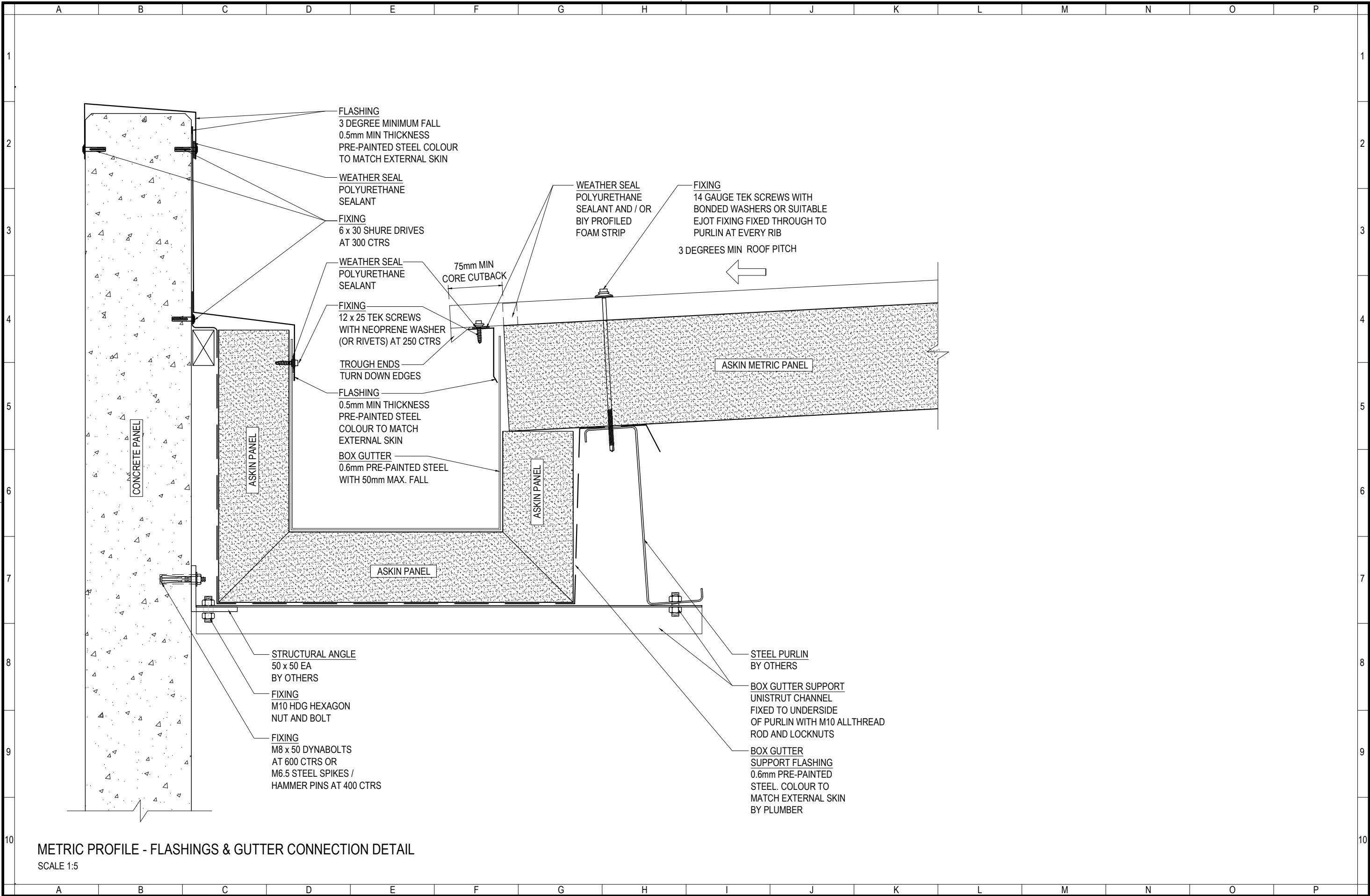
METRIC PROFILE - FLASHINGS & GUTTER CONNECTION DETAIL
SCALE 1:2

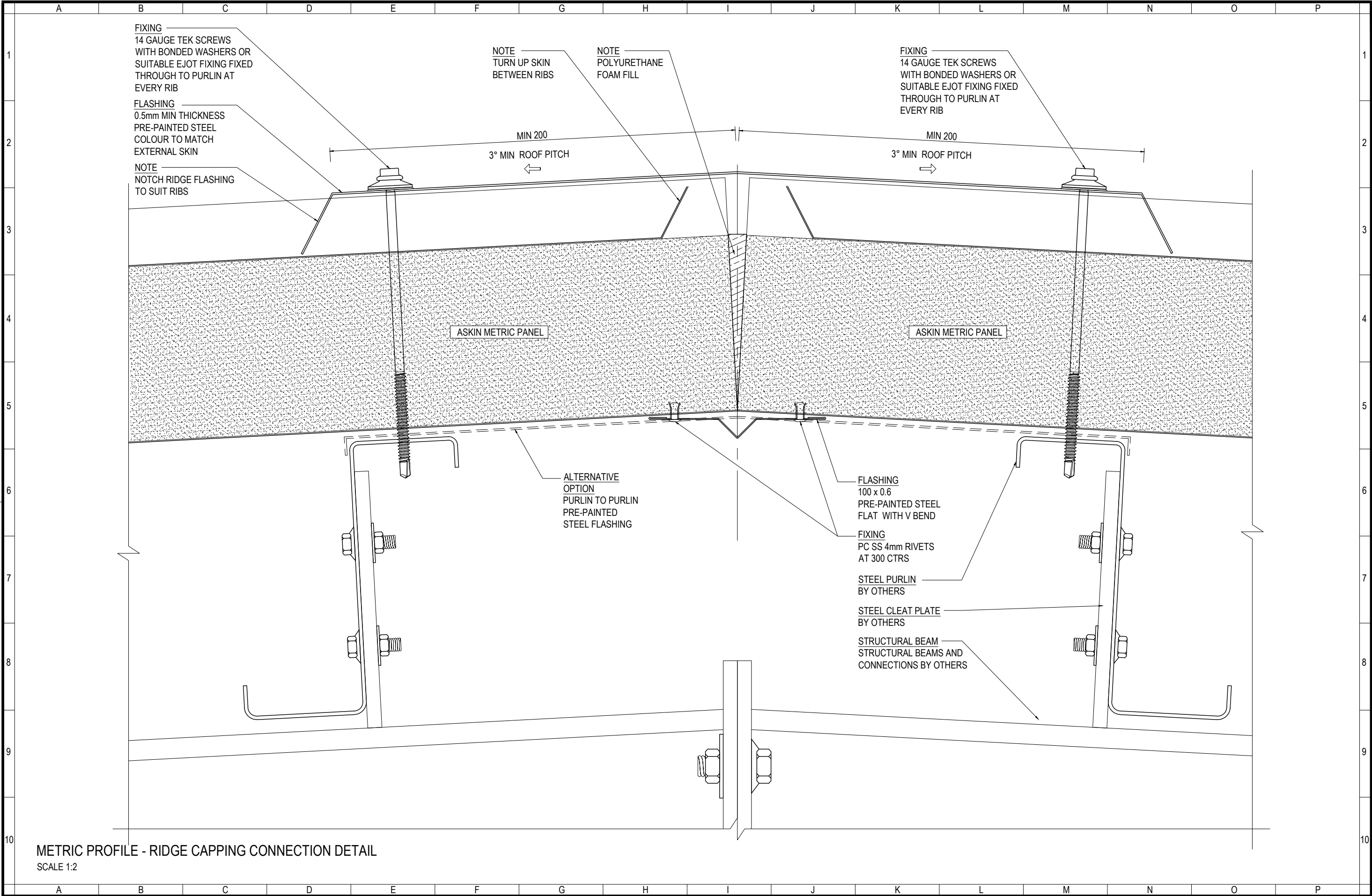


METRIC PROFILE - FLASHINGS & GUTTER CONNECTION DETAIL
SCALE 1:2

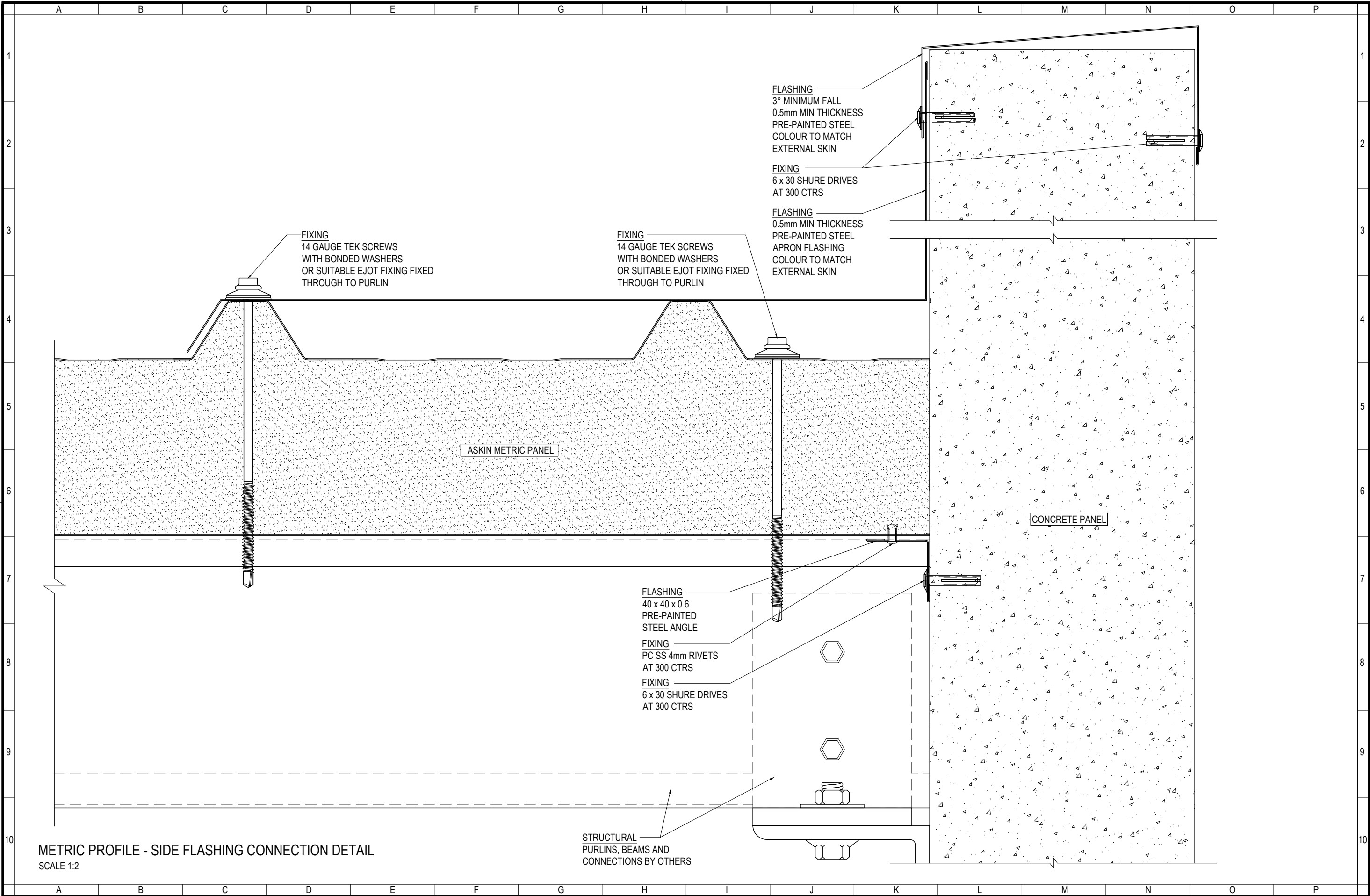


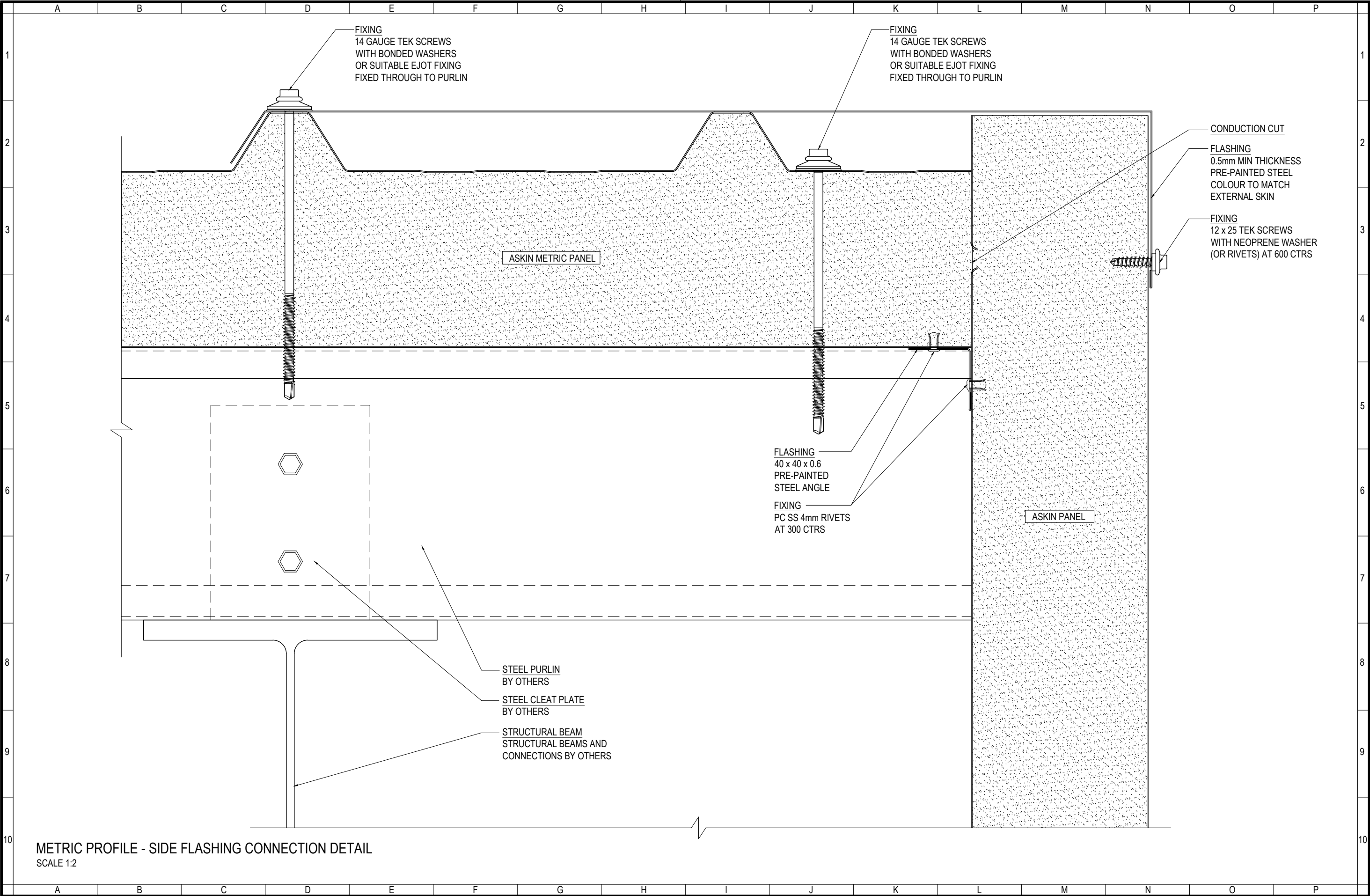




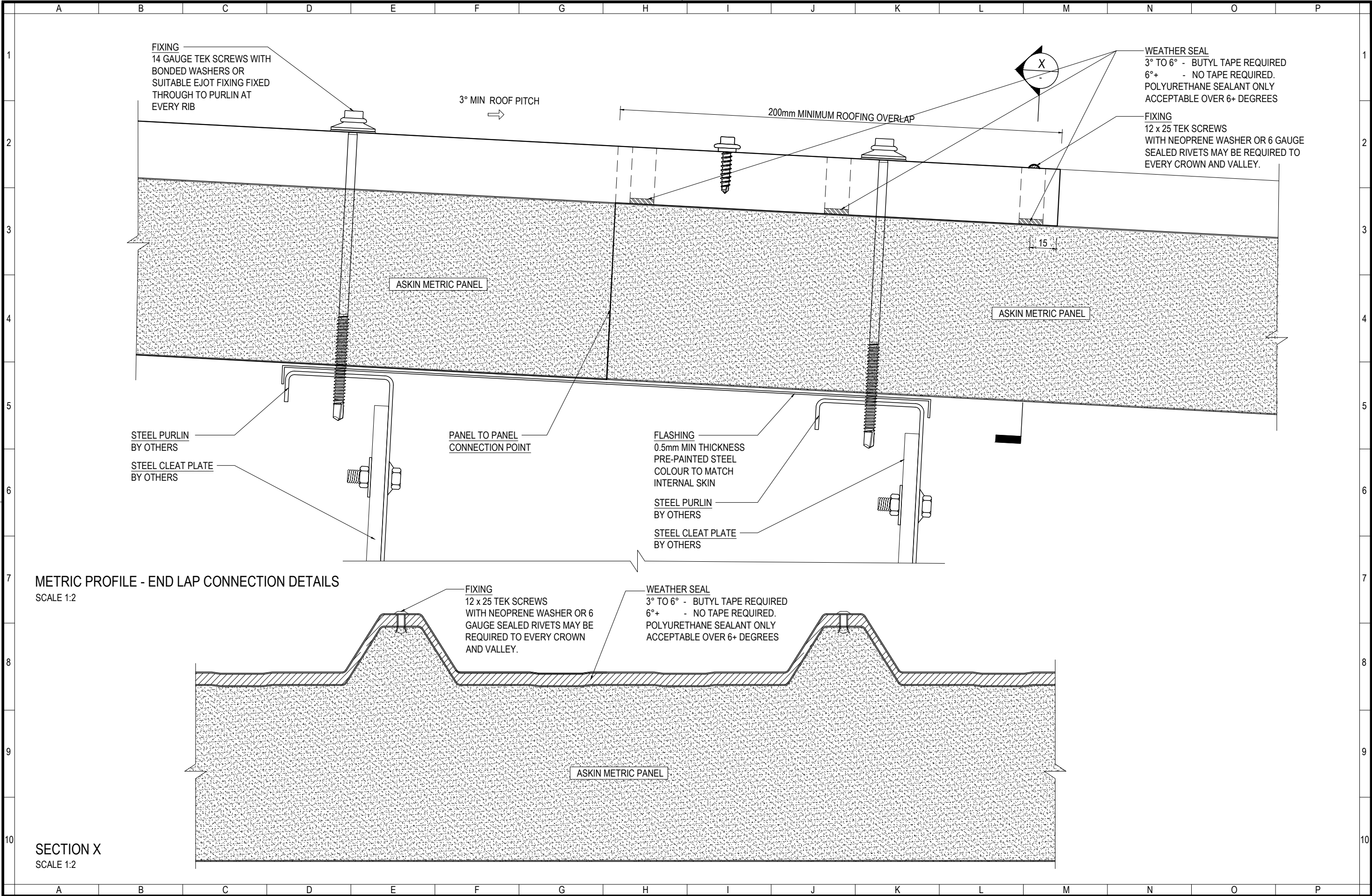


METRIC PROFILE - RIDGE CAPPING CONNECTION DETAIL
SCALE 1:2



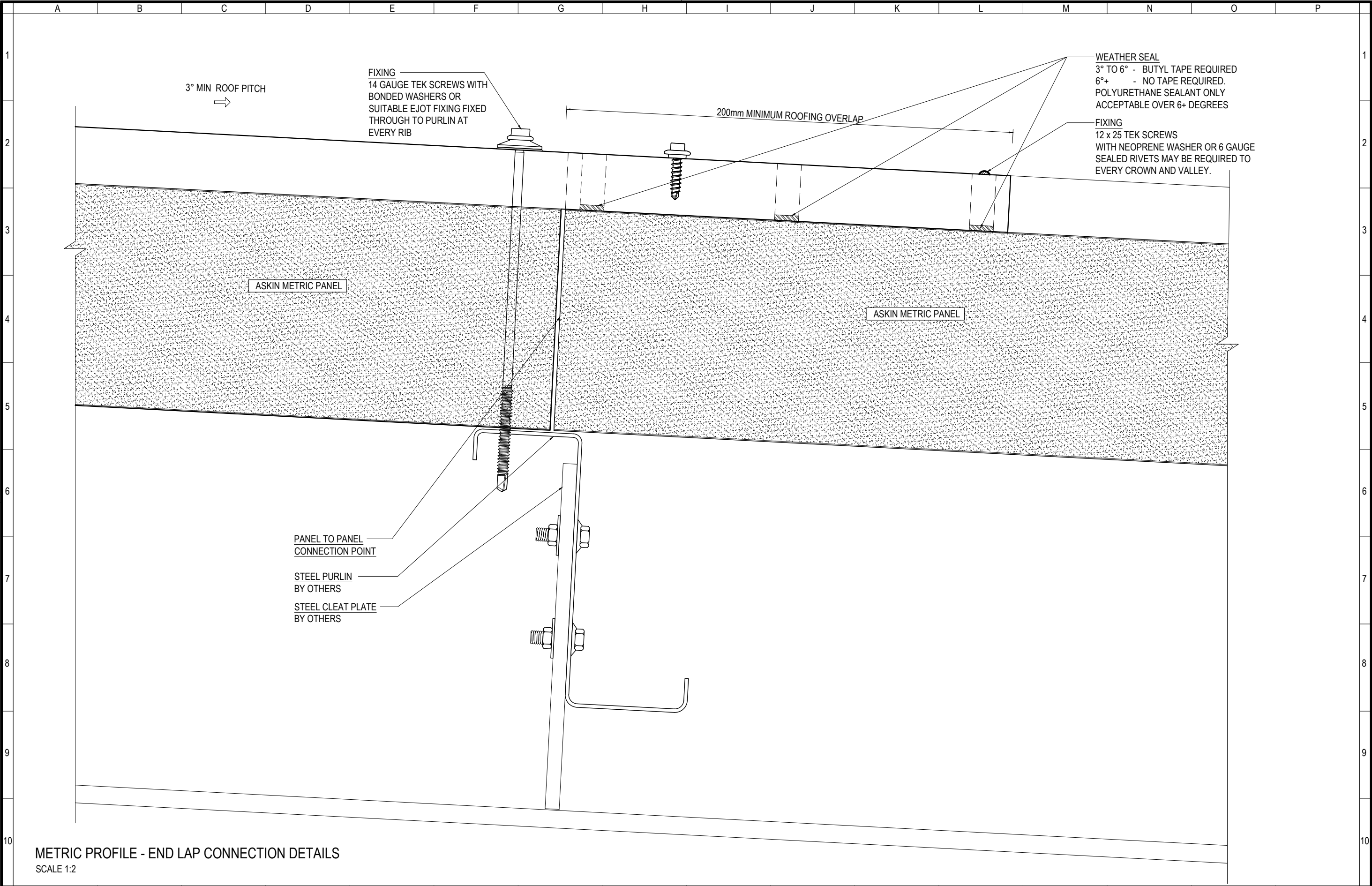


METRIC PROFILE - SIDE FLASHING CONNECTION DETAIL
SCALE 1:2

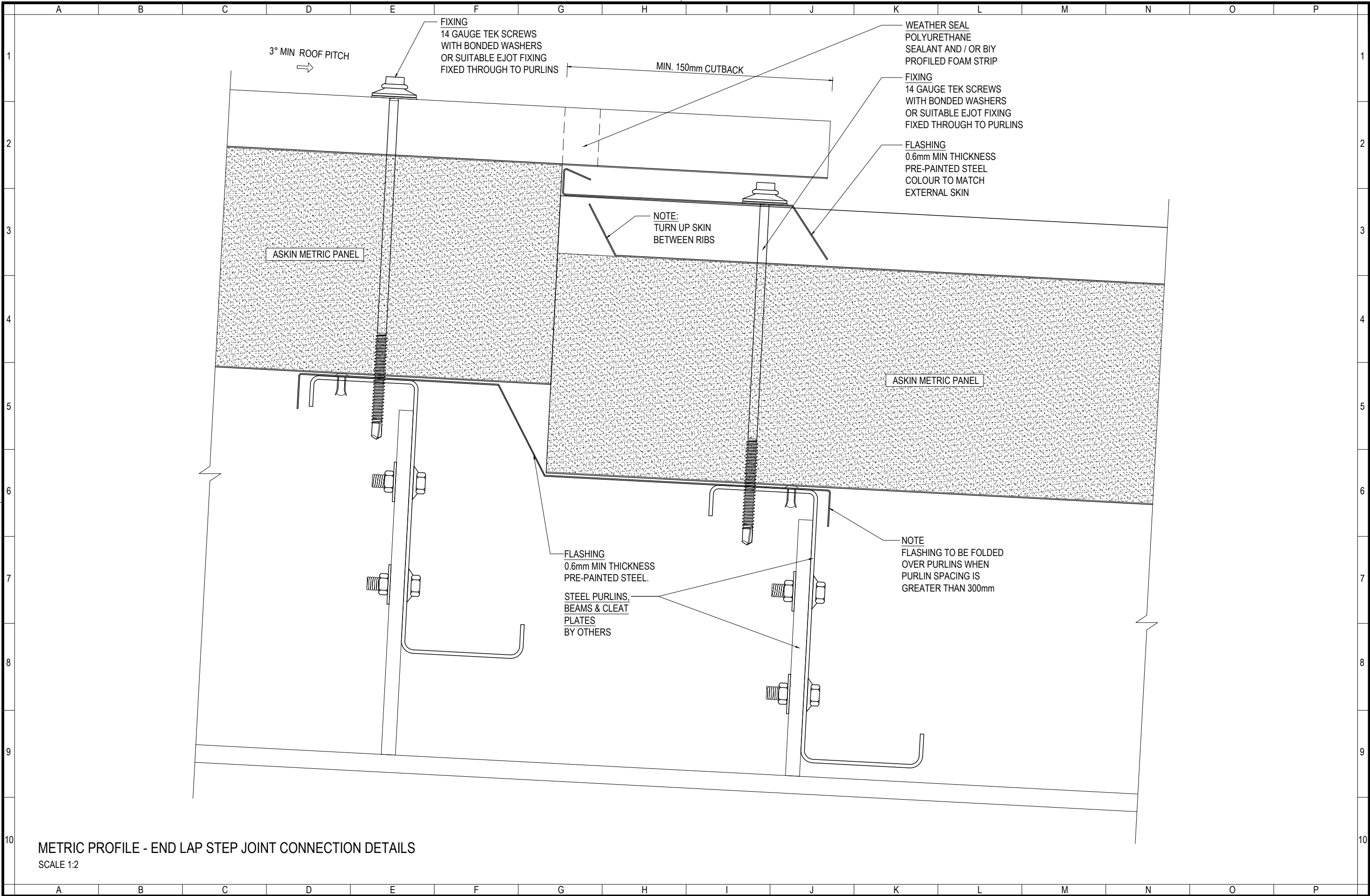


METRIC PROFILE - END LAP CONNECTION DETAILS
SCALE 1:2

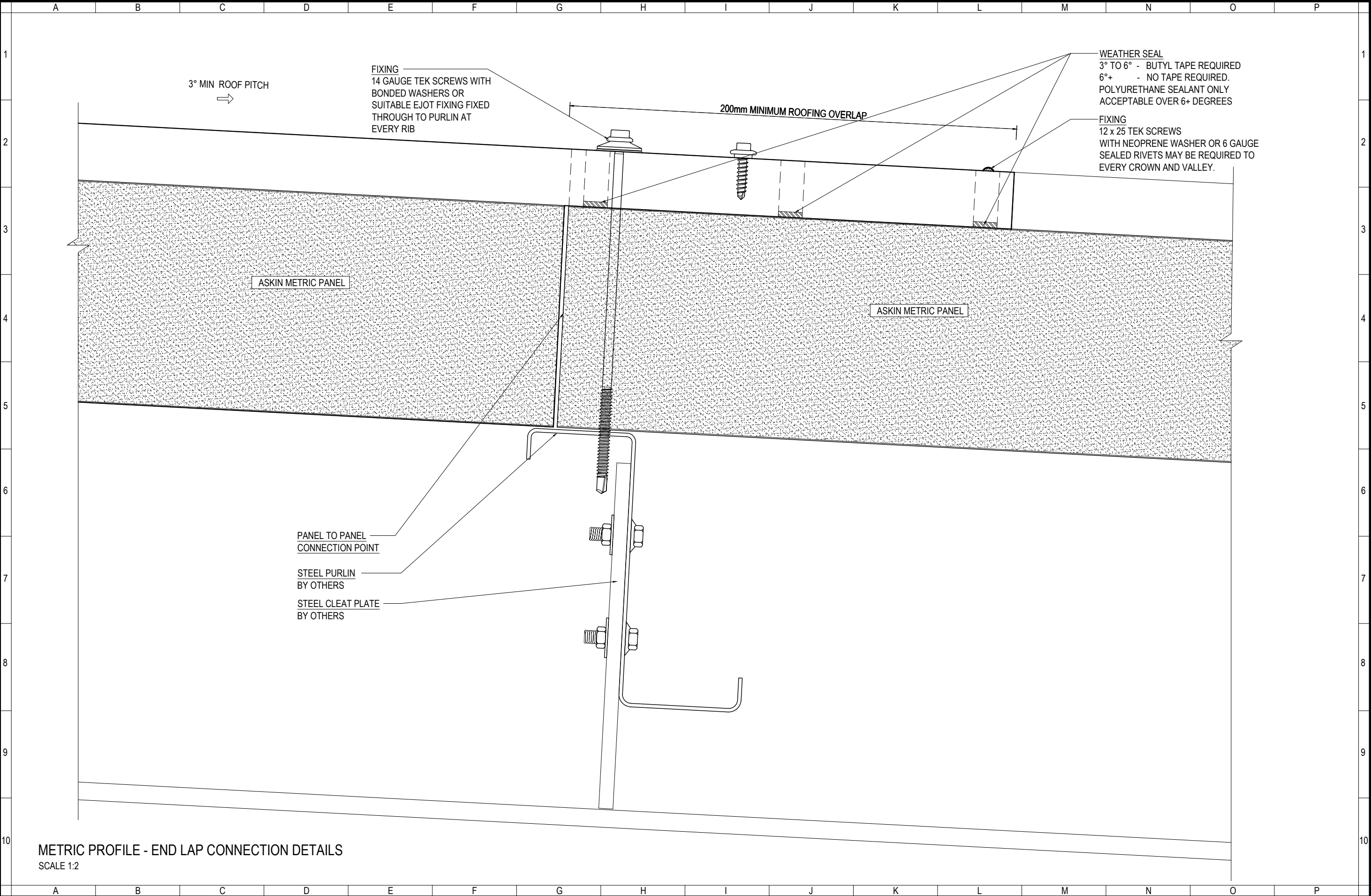
SECTION X
SCALE 1:2



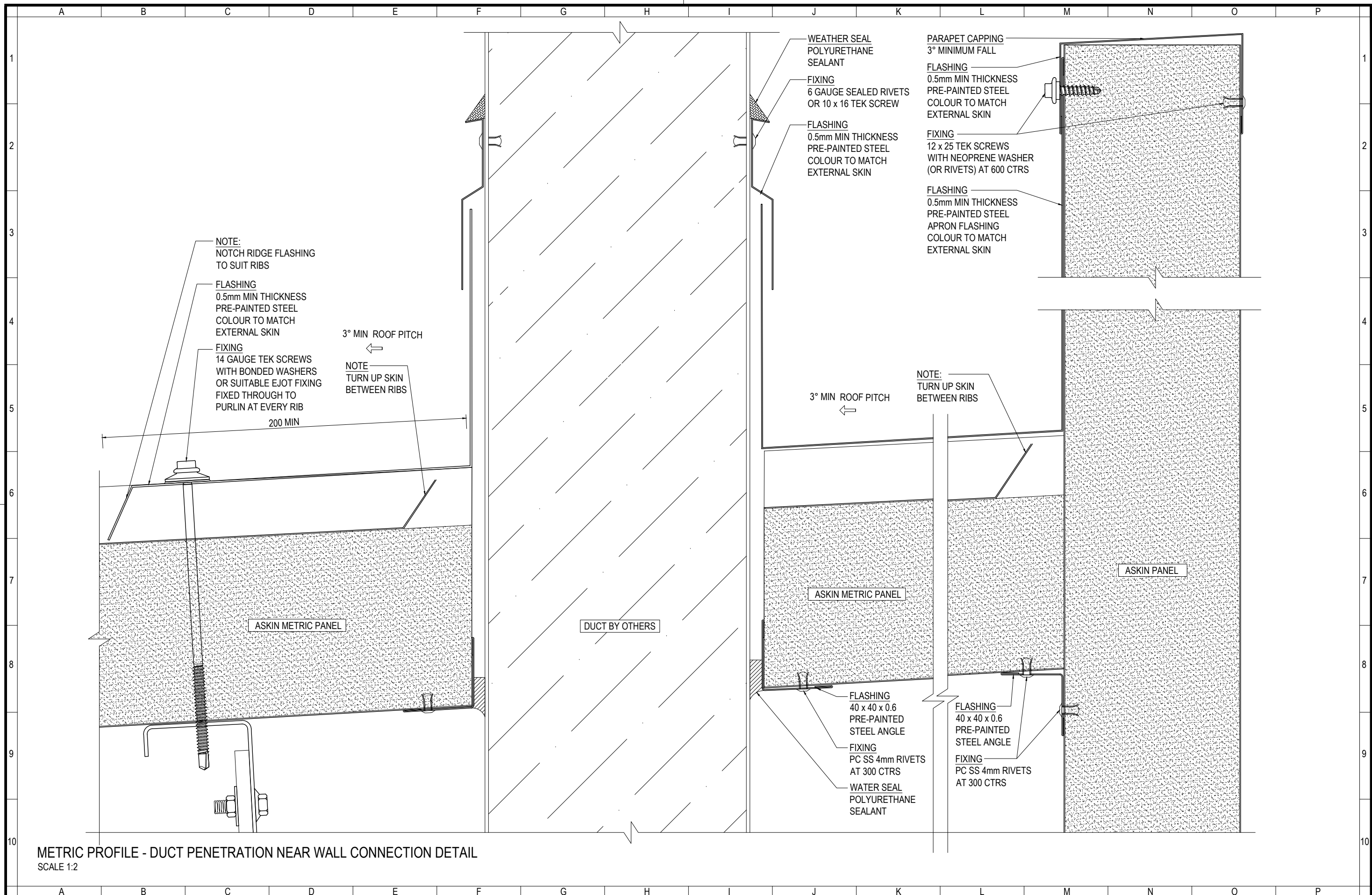
METRIC PROFILE - END LAP CONNECTION DETAILS
SCALE 1:2



METRIC PROFILE - END LAP STEP JOINT CONNECTION DETAILS
SCALE 1:2



METRIC PROFILE - END LAP CONNECTION DETAILS
SCALE 1:2



www.askin.net.au

VIC P: 03 8769 4816 WA P: 08 9249 4022
SA P: 08 8252 7188 QLD P: 07 3718 9500
NSW P: 02 8825 2598 NT P: 08 8252 7188

PROJECT:

ROOFING - METRIC

ROOF PENETRATION CONNECTION DETAILS

Revision

-	-	-
-	-	-
-	-	-
-	-	-
-	-	-
-	-	-
-	-	-
-	-	-

Checked By

A SHANNON

Drawn By

R VORWERK

Issue date

26.09.2022

Drawing No.

ROOFMET - 400

Scale

1:2

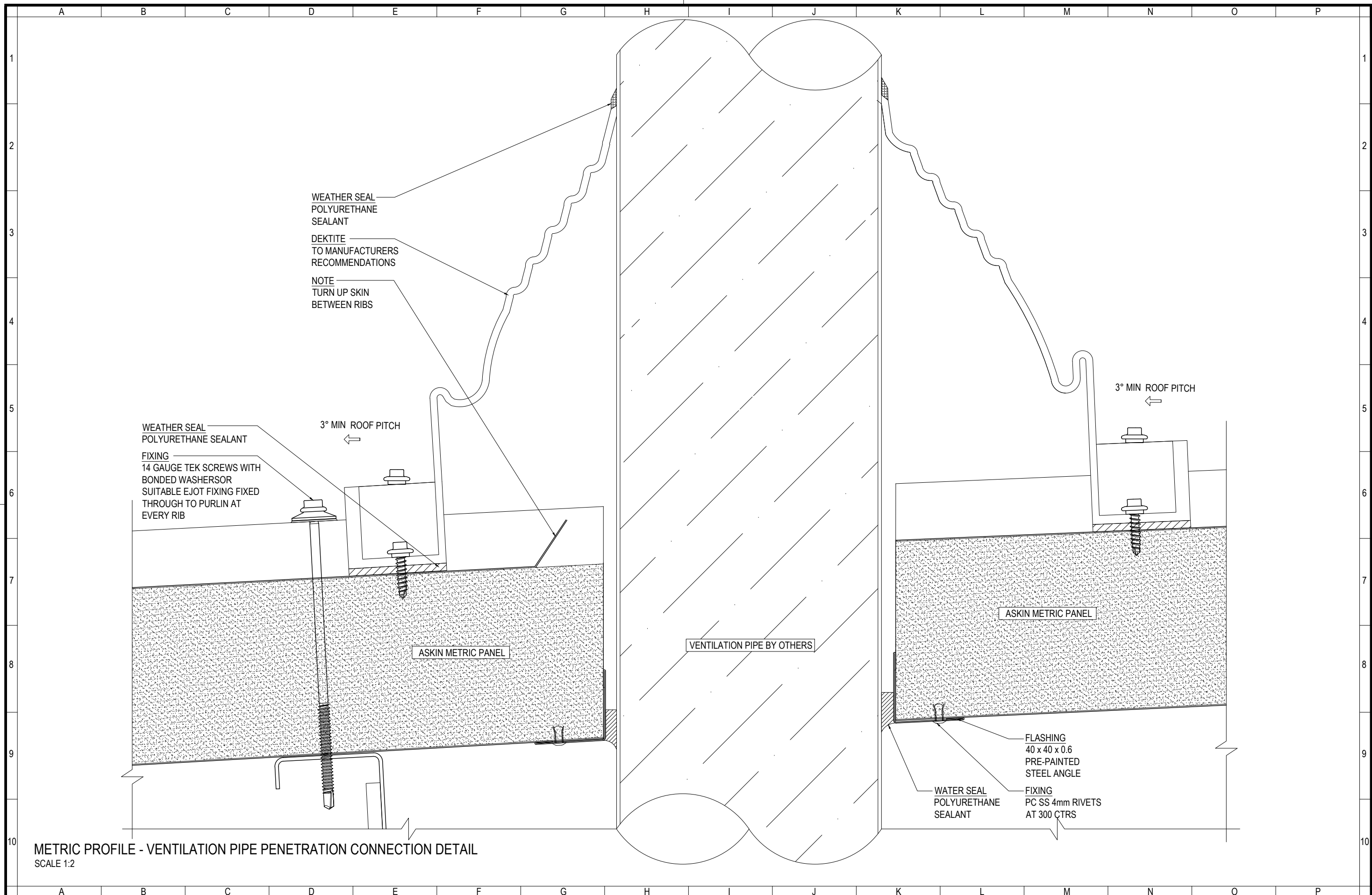
Sheet size

A3

Revision

-

©ASKIN 2022



www.askin.net.au

VIC P: 03 8769 4816 WA P: 08 9249 4022
SA P: 08 8252 7188 QLD P: 07 3718 9500
NSW P: 02 8825 2598 NT P: 08 8252 7188

PROJECT:

ROOFING - METRIC

ROOF PENETRATION CONNECTION DETAILS

Revision

-	-	-
-	-	-
-	-	-
-	-	-
-	-	-
-	-	-
-	-	-
-	-	-

Checked By

A SHANNON

Drawn By

R VORWERK

Issue date

26.09.2022

Drawing No.

ROOFMET - 401

Scale

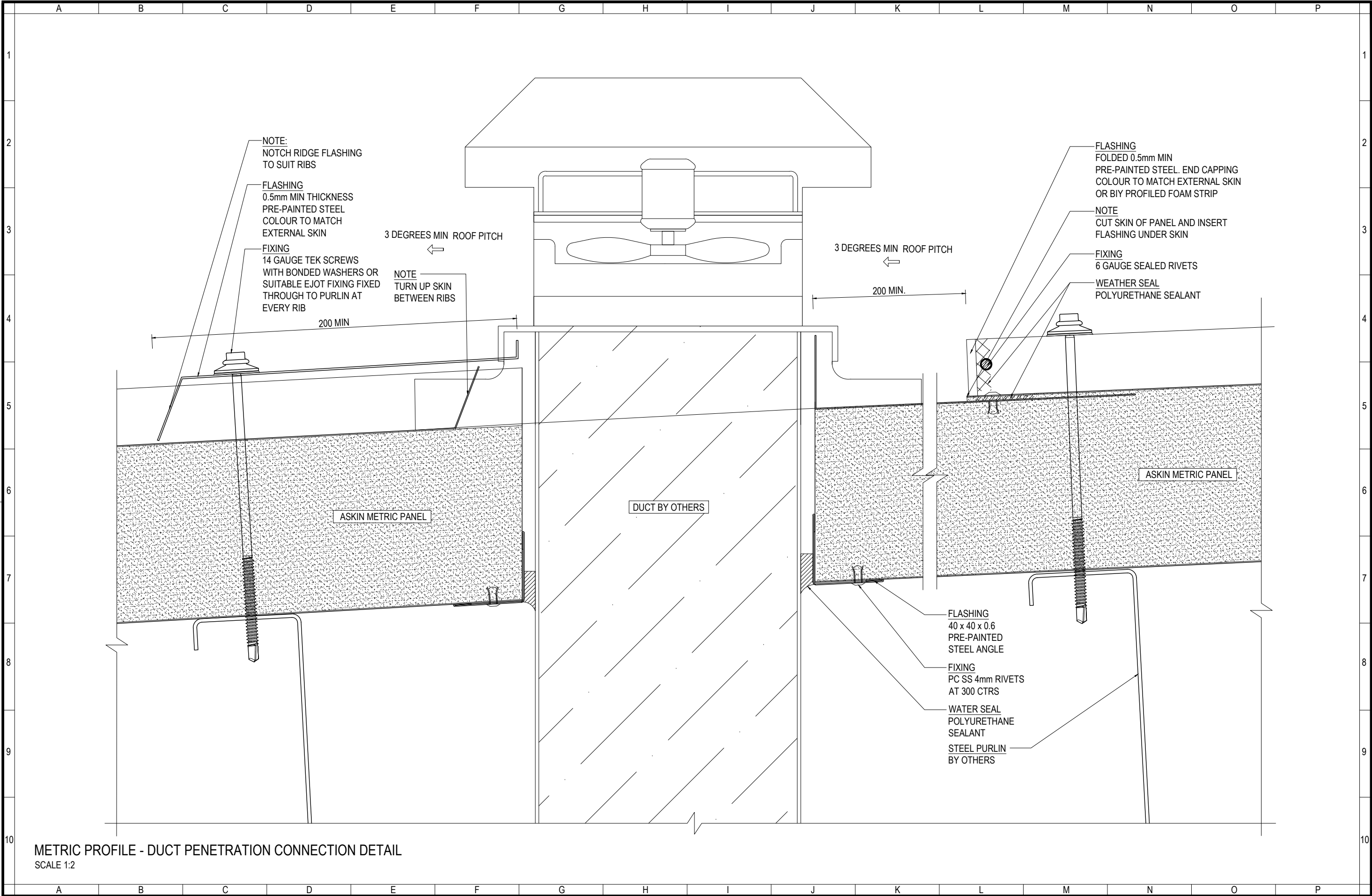
1:2

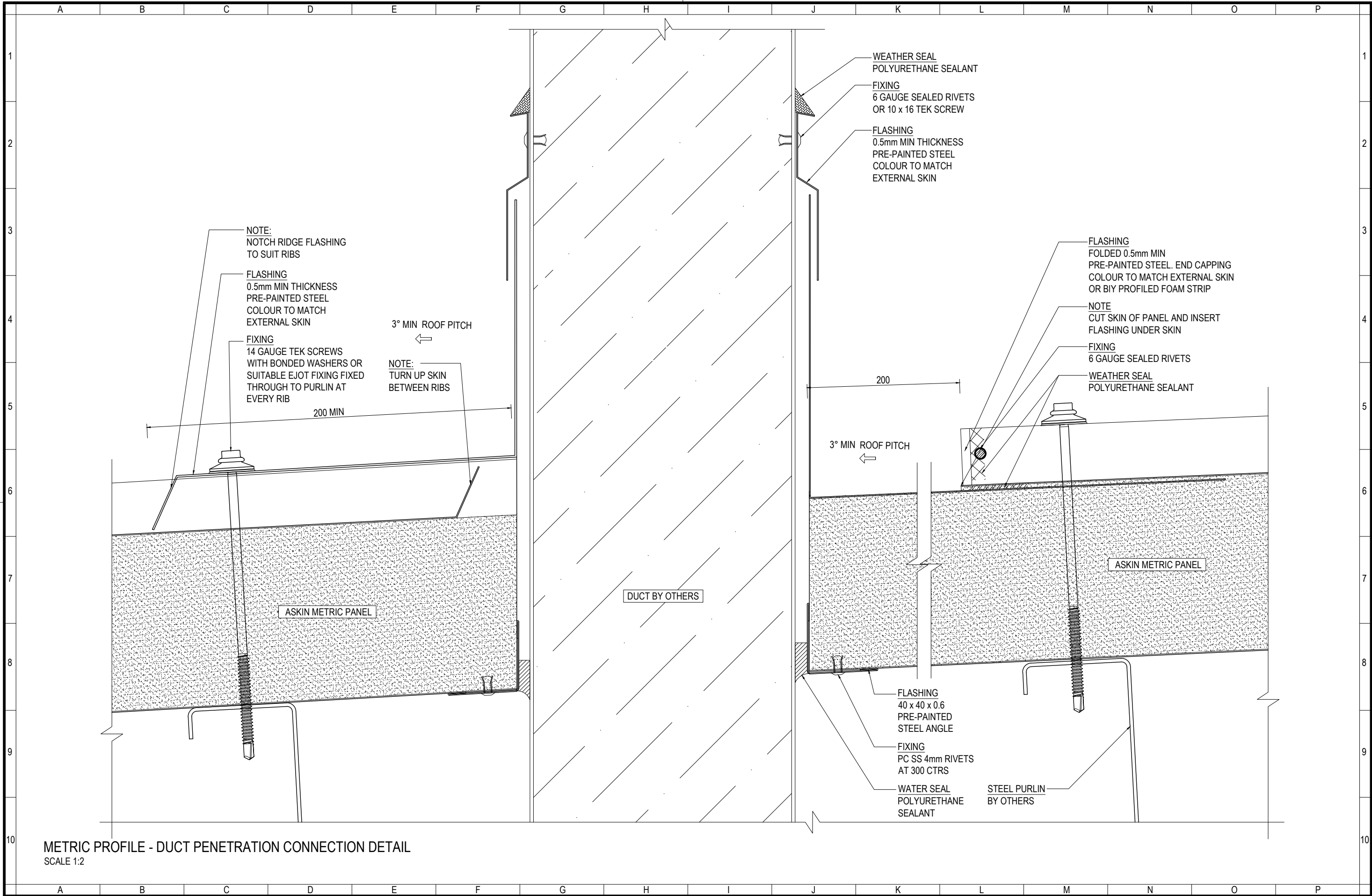
Sheet size

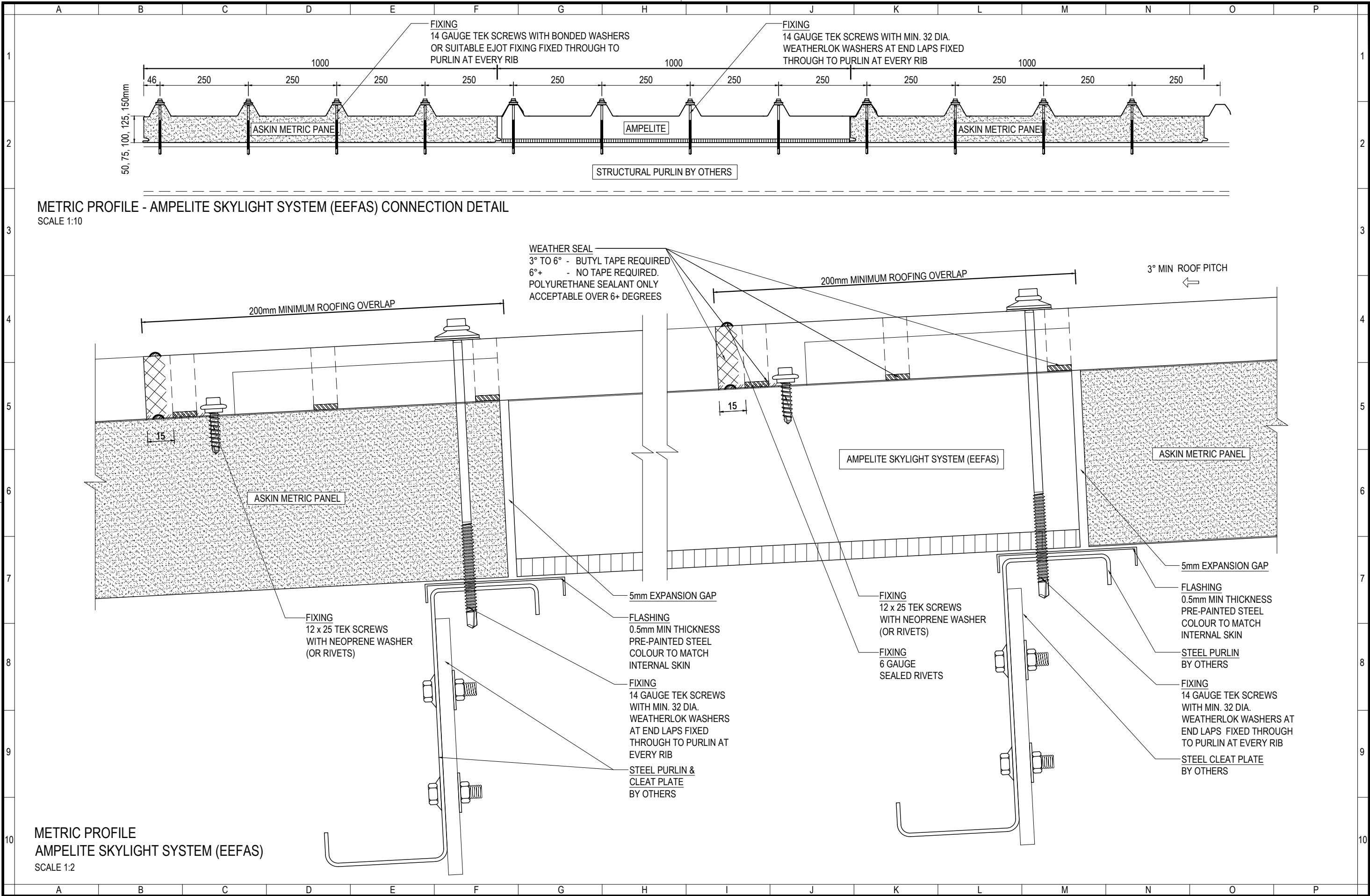
A3

Revision

-







METRIC PROFILE - AMPELITE SKYLIGHT SYSTEM (EEFAS) CONNECTION DETAIL
SCALE 1:10

METRIC PROFILE
AMPELITE SKYLIGHT SYSTEM (EEFAS)
SCALE 1:2